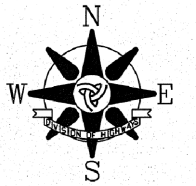
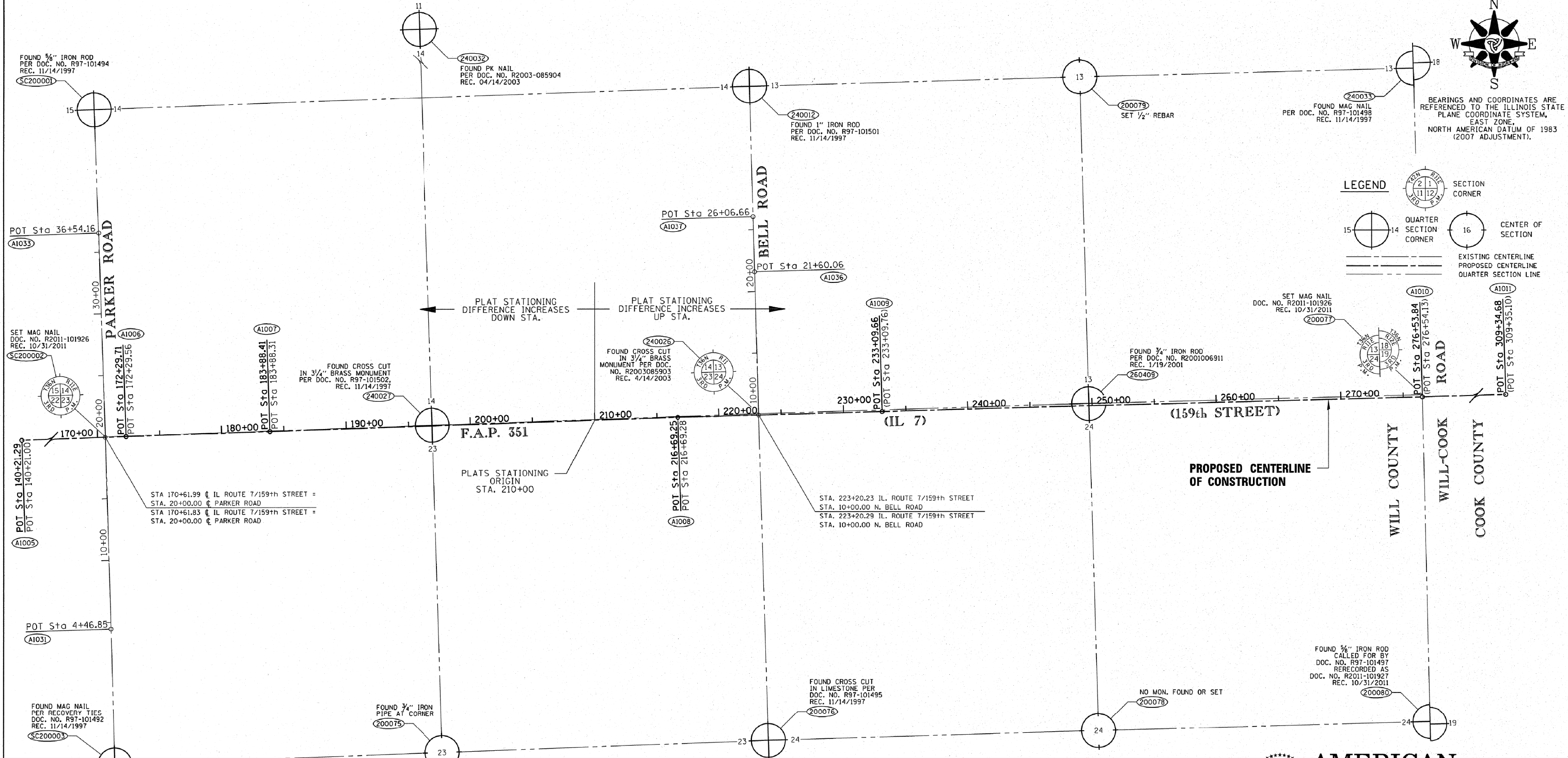
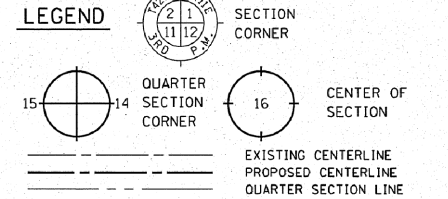


PART OF SECTION 13, 14, 23 AND 24, T36N, R11E, OF THE 3RD PM, WILL COUNTY, ILLINOIS



BEARINGS AND COORDINATES ARE REFERENCED TO THE ILLINOIS STATE PLANE COORDINATE SYSTEM, EAST ZONE, NORTH AMERICAN DATUM OF 1983 (2007 ADJUSTMENT).



CENTERLINE OF CONSTRUCTION PARKER ROAD

A1031	N	1,795,358.225 E	1,089,338.124 Sta	4+46.85
Course from A1031 to A1032 N 1° 43' 26" W Dist 1,553.148				
A1032	N	1,796,910.670 E	1,089,291.400 Sta	20+00.00
Course from A1032 to A1033 N 1° 46' 59" W Dist 1,654.159				
A1033	N	1,798,564.028 E	1,089,239.932 Sta	36+54.16

(SEE PAGE 20 OF 20 FOR RECOVERY TIE DATA)

CENTERLINE OF CONSTRUCTION BELL ROAD

A1035	N	1,797,083.340 E	1,094,546.800 Sta	10+00.00
Course from A1035 to A1036 N 1° 36' 33" W Dist 1,160.060				
A1036	N	1,798,242.943 E	1,094,514.242 Sta	21+60.06
Course from A1036 to A1037 N 1° 36' 33" W Dist 446.596				
A1037	N	1,798,689.364 E	1,094,501.708 Sta	26+06.66

(SEE PAGE 20 OF 20 FOR RECOVERY TIE DATA)

CENTERLINE OF CONSTRUCTION F.A.P. 351 IL 7 (159th STREET)

A1005	N	1,796,806.396 E	1,086,252.495 Sta	140+21.29
Course from A1005 to A1006 N 88° 02' 05" E Dist 3,208.420				
A1006	N	1,796,916.420 E	1,089,459.027 Sta	172+29.71
Course from A1006 to A1007 N 88° 05' 05" E Dist 1,158.701				
A1007	N	1,796,955.148 E	1,090,617.081 Sta	183+88.41
Course from A1007 to A1008 N 88° 04' 34" E Dist 3,280.835				
A1008	N	1,797,065.292 E	1,093,896.067 Sta	216+69.25
Course from A1008 to A1009 N 88° 24' 42" E Dist 1,640.413				
A1009	N	1,797,110.761 E	1,095,535.850 Sta	233+09.66
Course from A1009 to A1010 N 88° 27' 08" E Dist 4,344.181				
A1010	N	1,797,228.090 E	1,099,878.446 Sta	276+53.84
Course from A1010 to A1011 N 88° 15' 32" E Dist 3,280.836				
A1011	N	1,797,327.775 E	1,103,157.767 Sta	309+34.68

(SEE PAGE 20 OF 20 FOR RECOVERY TIE DATA)

SECTION CORNERS

POINT NO.	NORTH	EAST
200075	1794355.556	1092000.838
200076	1794450.917	1094623.886
200077	1797246.551	1099878.001
200078	1794528.091	1097277.373
200079	1799821.939	1097127.299
200080	1794605.203	1099939.335
240012	1799747.776	1094473.068
240026	1797093.937	1094544.230
240027	1797003.889	1091919.620
240032	1802311.619	1091749.271
240033	1799896.789	1099806.428
260409	1797173.501	1097199.401
SC200001	1799563.070	1089202.560
SC200002	1796913.558	1089293.953
SC200003	1794259.865	1089370.027



STATE OF ILLINOIS)
 COUNTY OF COOK) S.S.

THIS IS TO CERTIFY THAT I, COVENTINE FIDIS, AN ILLINOIS PROFESSIONAL LAND SURVEYOR, HAVE SURVEYED THE PLAT OF HIGHWAYS SHOWN HEREON IN SECTION 13, 14, 23 AND 24, TOWNSHIP 36 NORTH, RANGE 11 EAST OF THE THIRD PRINCIPAL MERIDIAN, WILL COUNTY, THAT THE SURVEY IS TRUE AND COMPLETE AS SHOWN TO THE BEST OF MY KNOWLEDGE AND BELIEF, THAT THE PLAT CORRECTLY REPRESENTS SAID SURVEY, THAT ALL MONUMENTS FOUND AND ESTABLISHED ARE OF PERMANENT QUALITY AND OCCUPY THE POSITIONS SHOWN THEREON AND THAT THE MONUMENTS ARE SUFFICIENT TO ENABLE THE SURVEY TO BE RETRACED, MADE FOR THE DEPARTMENT OF TRANSPORTATION, STATE OF ILLINOIS.

DATED AT CHICAGO, ILLINOIS THIS ...TH DAY OF, 2013.

COVENTINE FIDIS
 ILLINOIS PROFESSIONAL LAND SURVEYOR NO. 2159
 LICENSE, EXPIRATION DATE 11/30/2014

THIS PROFESSIONAL SERVICE CONFORMS TO THE CURRENT ILLINOIS MINIMUM STANDARDS FOR A BOUNDARY SURVEY.



AMERICAN
 SURVEYING & ENGINEERING, P.C.
 SURVEYORS-ENGINEERS
 105 W. Madison St. Suite 1700
 Chicago, IL 60602
 312-277-2000 / Fax 312-277-2002

PLAT OF HIGHWAYS
 STATE OF ILLINOIS
 DEPARTMENT OF TRANSPORTATION
 F.A.P. 351 (IL 7)
 PARKER ROAD TO WILL-COOK ROAD

SECTION: WILL COUNTY
 PROJECT: JOB NO. R-91-023-97
 DESIGN ALIGNMENT, COORDS. & GROUND STA. REFERENCE
 SCALE: 1" = 400' SHEET 15 OF 20

BUREAU OF LAND ACQUISITION
 201 WEST CENTER COURT
 SCHAUMBURG, ILLINOIS 60196

RECEIVED
 JUL 17 2013
 PLATS & LEGALS