

SURVEY TIES

T21 = MAGNAIL IN EAST FACE OF 8" TREE
 T22 = MAGNAIL IN SOUTH FACE OF 24" TREE
 T23 = MAGNAIL IN WEST FACE OF 8" TREE

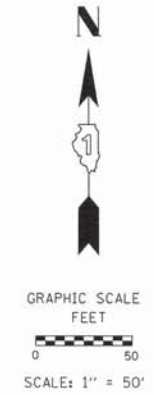
T27 = MAGNAIL IN SOUTH FACE OF 4" TREE
 T28 = SET REBAR WITH YELLOW PLASTIC CAP
 T29 = SET REBAR WITH YELLOW PLASTIC CAP

T24 = MAGNAIL IN EAST FACE OF 12" TREE
 T25 = MAGNAIL IN SE FACE OF 10" TREE
 T26 = MAGNAIL IN SOUTH FACE OF 12" TREE

PT. #	TIE #	TIE DISTANCE (FEET)
43	T27	3.00'
	T28	6.31'
	T29	4.31'
44	T24	21.48'
	T25	17.10'
	T26	5.34'
45	T21	7.72'
	T22	7.54'
	T23	21.98'

LEGEND

- SECTION LINE
- QUARTER SECTION LINE
- QUARTER, QUARTER SECTION LINE
- PLATTED LOT LINES
- PROPERTY (DEED) LINE
- APL APPARENT PROPERTY LINE
- EXISTING CENTERLINE
- PROPOSED CENTERLINE
- EXISTING RIGHT OF WAY LINE
- PROPOSED RIGHT OF WAY LINE
- PROPOSED EASEMENT
- MEASURED DIMENSION
- 129.32' (COMP) COMPUTED DIMENSION
- (129.32') RECORDED DIMENSION
- ▨ EXISTING BUILDING



- IRON PIPE OR ROD FOUND
- + CUT CROSS FOUND OR SET
- T1, T2, T3 THESE STAKES REFERENCE FOUND OR SET MONUMENTATION. SET 5/8 INCH IRON ROD FLUSH WITH GROUND TO TIE FOUND IRON STAKE IDENTIFIED BY COLORED PLASTIC CAP BEARING SURVEYOR'S REGISTRATION NUMBER.
- BT1, BT2, BT3 THESE STAKES, IN CULTIVATED AREAS, REFERENCE FOUND OR SET MONUMENTATION. BURIED 5/8 INCH IRON ROD 20 INCHES BELOW GROUND TO TIE FOUND IRON STAKE, IDENTIFIED BY COLORED PLASTIC CAP BEARING SURVEYOR'S REGISTRATION NUMBER.
- STAKING OF PROPOSED RIGHT OF WAY. SET DIVISION OF HIGHWAYS SURVEY MARKER TO MONUMENT THE POSITION SHOWN, IDENTIFIED BY INSCRIPTION DATA AND SURVEYOR'S REGISTRATION NUMBER.
- M STAKING OF PROPOSED RIGHT OF WAY IN CULTIVATED AREAS. BURIED 5/8 INCH METAL ROD 20 INCHES BELOW GROUND TO MARK FUTURE SURVEY MARKER POSITION IDENTIFIED BY COLORED PLASTIC CAP BEARING SURVEYOR'S REGISTRATION NUMBER.
- ⊙ PERMANENT SURVEY MARKER, I.D.O.T. STANDARD 2135 (TO BE SET BY OTHERS)
- RIGHT OF WAY STAKING PROPOSED TO BE SET

STATE OF ILLINOIS)
)SS
 COUNTY OF KANE)

THIS IS TO CERTIFY THAT I, CHRIS E. PETERSON, AN ILLINOIS PROFESSIONAL LAND SURVEYOR, HAVE SURVEYED THE PLAT OF HIGHWAYS SHOWN HEREON IN SECTION 17, TOWNSHIP 36 NORTH, RANGE 12 EAST OF THE THIRD PRINCIPAL MERIDIAN, COOK COUNTY, THAT THE SURVEY IS TRUE AND COMPLETE AS SHOWN TO THE BEST OF MY KNOWLEDGE AND BELIEF, THAT THE PLAT CORRECTLY REPRESENTS SAID SURVEY, THAT ALL MONUMENTS FOUND AND ESTABLISHED ARE OF PERMANENT QUALITY AND OCCUPY THE POSITIONS SHOWN THEREON AND THAT THE MONUMENTS ARE SUFFICIENT TO ENABLE THE SURVEY TO BE RETRACED, MADE FOR THE DEPARTMENT OF TRANSPORTATION, STATE OF ILLINOIS.

DATED AT SUGAR GROVE, ILLINOIS THIS DAY OF 2013 A.D.

ILLINOIS PROFESSIONAL LAND SURVEYOR NO. 3678
 LICENSE EXPIRATION DATE: 11-30-2014
 THIS PROFESSIONAL SERVICE CONFORMS TO THE CURRENT ILLINOIS MINIMUM STANDARDS FOR A BOUNDARY SURVEY.

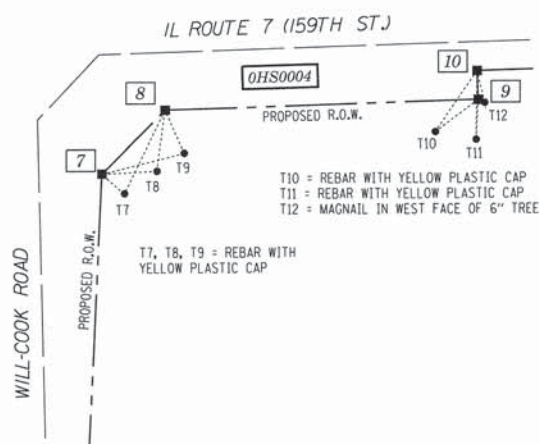


ENGINEERING ENTERPRISES, INC.
 CONSULTING ENGINEERS & LAND SURVEYORS
 52 WHEELER ROAD
 SUGAR GROVE, ILLINOIS 60554
 PH. (630-466-6700 / www.eeivb.com)

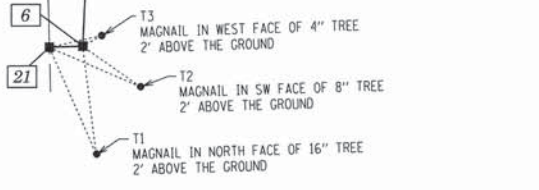
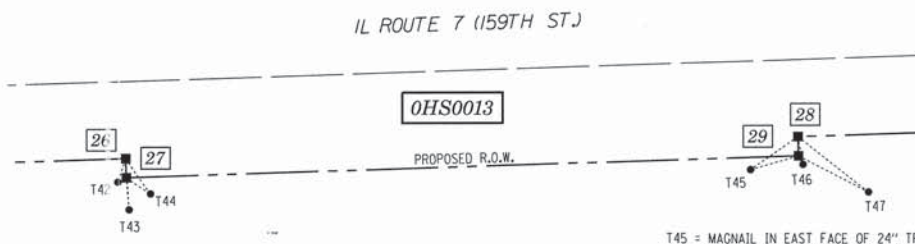
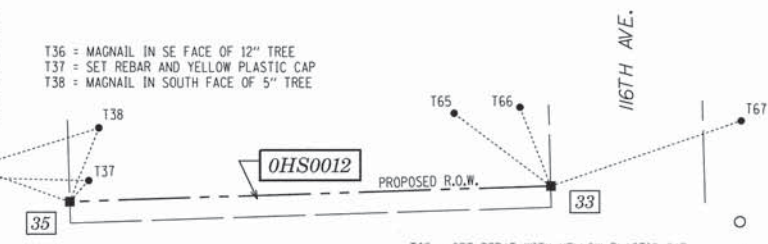
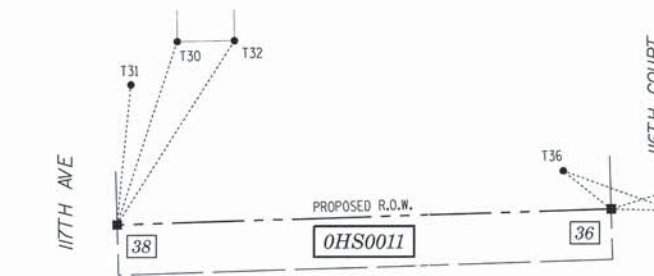
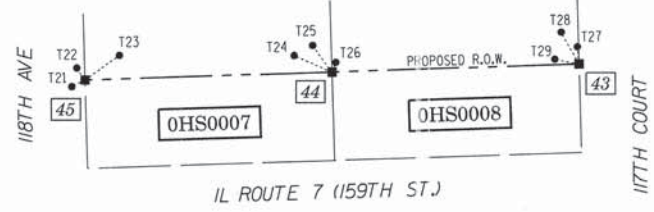
PLAT OF HIGHWAYS
 STATE OF ILLINOIS
 DEPARTMENT OF TRANSPORTATION
 US ROUTE 6 / IL ROUTE 7 (159th ST.)
 LIMITS: WILL COOK RD. COUNTY: COOK
 PROJECT: 159th JOB NO.: R-90-028-11
 STATION 24+00 TO STATION 28+70
 SCALE: 1"=50' SHEET 20 OF 26

RECEIVED
 APR 01 2013
PLATS & LEGALS

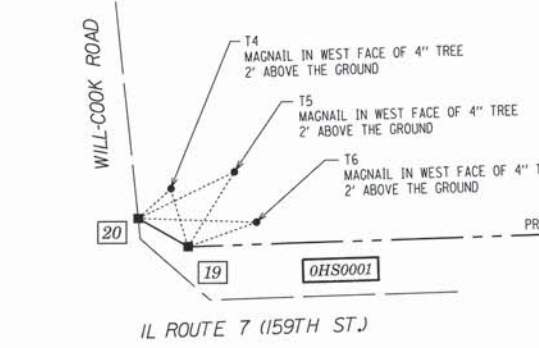
BUREAU OF LAND ACQUISITION
 201 WEST CENTER COURT
 SCHAUMBURG, ILLINOIS 60196



PT. #	TIE #	TIE DISTANCE (FEET)
6	T1	56.60'
	T2	36.85'
	T3	11.33'
7	T7	15.58'
	T8	28.77'
	T9	44.25'
8	T7	48.09'
	T8	31.93'
	T9	24.49'
9	T10	27.75'
	T11	20.67'
	T12	3.83'
10	T10	38.38'
	T11	35.66'
	T12	17.00'
21	T1	60.81'
	T2	51.84'
	T3	27.98'



PT. #	TIE #	TIE DISTANCE (FEET)
17	T19	26.44'
	T20	19.45'
	T21	9.96'
18	T19	21.47'
	T20	9.45'
	T21	3.92'
19	T4	31.23'
	T5	45.44'
	T6	37.82'
20	T4	22.95'
	T5	55.52'
	T6	61.69'



T19 = MAGNAIL IN EAST FACE OF DOUBLE 20" TREE
 T20 = MAGNAIL IN SOUTH FACE OF 24" TREE
 T21 = MAGNAIL IN WEST FACE OF 36" TREE

T30 = HOUSE CORNER
 T31 = MAGNAIL IN SOUTH FACE OF UTILITY POLE
 T32 = HOUSE CORNER

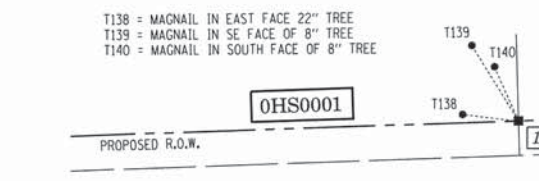
T65 = SET REBAR WITH YELLOW PLASTIC CAP
 T66 = SET REBAR WITH YELLOW PLASTIC CAP
 T67 = MAGNAIL IN SOUTH FACE OF 12" TREE

T42 = MAGNAIL IN NE FACE OF 32" TREE
 T43 = MAGNAIL IN NORTH FACE OF 7" TREE
 T44 = MAGNAIL IN WEST FACE OF 7" TREE

PT. #	TIE #	TIE DISTANCE (FEET)
15	T21	49.28'
	T143	74.88'
	T144	5.50'
16	T138	29.39'
	T139	71.38'
	T140	30.88'
22	T141	20.00'
	T142	27.41'
	T143	56.27'

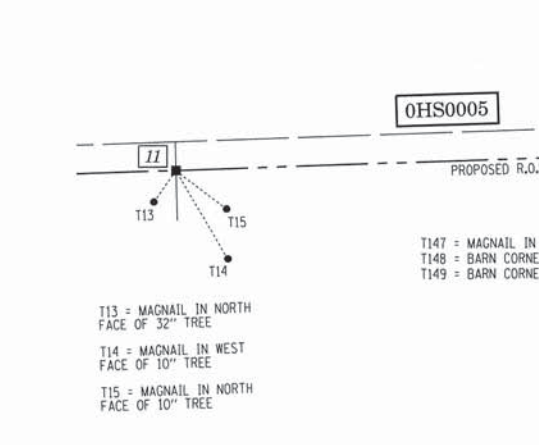
PT. #	TIE #	TIE DISTANCE (FEET)
26	T42	12.99'
	T43	26.84'
	T44	22.57'
27	T42	4.93'
	T43	16.85'
	T44	15.23'
28	T45	30.00'
	T46	14.68'
	T47	46.79'
29	T45	25.94'
	T46	5.03'
	T47	41.06'
33	T65	62.84'
	T66	43.78'
	T67	104.62'
35	T36	97.00'
	T37	14.71'
	T38	41.06'
36	T36	31.85'
	T37	76.25'
	T38	85.35'
38	T30	112.13'
	T31	72.91'
	T32	120.72'

PT. #	TIE #	TIE DISTANCE (FEET)
11	T13	20.13'
	T14	53.50'
	T15	33.19'
12	T147	4.61'
	T148	132.13'
	T149	120.63'
13	T16	121.51'
	T145	68.81'
	T146	39.32'
14	T16	70.04'
	T145	82.73'
	T146	84.39'
25	T16	47.94'
	T145	117.98'
	T146	112.75'
34	T16	39.68'
	T145	115.32'
	T146	115.66'

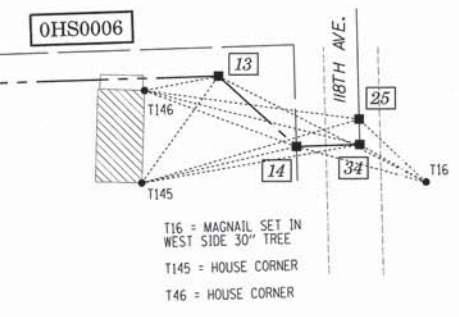


T138 = MAGNAIL IN EAST FACE 22" TREE
 T139 = MAGNAIL IN SE FACE OF 8" TREE
 T140 = MAGNAIL IN SOUTH FACE OF 8" TREE

T21 = MAGNAIL IN EAST FACE 8" TREE
 T141 = MAGNAIL IN SE FACE 18" TREE
 T142 = MAGNAIL IN SE FACE 22" TREE
 T143 = SE CORNER OF 1 STORY HOUSE
 T144 = MAGNAIL IN SE FACE 10" TREE



T117 = MAGNAIL IN WEST SIDE OF WOOD FENCE
 T148 = BARN CORNER
 T149 = BARN CORNER



T116 = MAGNAIL SET IN WEST SIDE 30" TREE
 T145 = HOUSE CORNER
 T46 = HOUSE CORNER