

F.A.P. RTE.	SECTION	COUNTY	TOTAL SHEETS	SHEET NO.
351	2014-010DTR	WILL/COOK	207	1
		ILLINOIS	CONTRACT NO. 60X92	

IMPROVEMENTS LOCATED IN THE VILLAGE OF HOMER GLEN AND UNINCORPORATED HOMER TOWNSHIP, WILL COUNTY AND THE VILLAGE OF ORLAND PARK, COOK COUNTY

STATE OF ILLINOIS  
DEPARTMENT OF TRANSPORTATION  
DIVISION OF HIGHWAYS

**PROPOSED  
HIGHWAY PLANS**

FOR INDEX OF SHEETS, SEE SHEET NO. 2

**TRAFFIC DATA**

IL ROUTE 7	ADT 2009/2030	SPEED DESIGN/POSTED
GOUGAR RD TO CEDAR RD	17,500/20,000	45/45
CEDAR RD TO PARKER RD	17,500/23,000	45/45
PARKER RD TO S BELL RD	17,500/24,000	45/45
S BELL RD TO WILL-COOK RD	17,700/25,000	45/45
S CEDAR RD	9,800/20,000	45/40
N CEDAR RD	4,050/7,000	45/40
S PARKER RD	9,000/11,000	45/40
N PARKER RD	9,000/13,000	45/45
S BELL RD	6,400/12,000	45/35
N BELL RD	12,800/16,000	45/40
S WILL-COOK RD	13,400/16,000	45/45
N WILL-COOK RD	9,300/12,000	45/45
IL RTE 7/U.S. RTE 6 (159TH ST)	17,700-22,100/ 25,000-33,000	45/40-45
WOLF RD	17,300/18,000	45/45
108TH AVE	9,300/10,000	45/45
104TH AVE	6,600/11,000	45/45

FAP ROUTE 351: US 6 / IL 7 (159TH ST.)  
GOUGAR RD. TO RAVINIA AVE.  
SECTION: 2014-010DTR  
PROJECT: ACNHPP-0351 (026)  
ADVANCE WORK - TREE REMOVAL  
WILL/COOK COUNTIES  
C-91-272-14

BY: *Michael G. Zorn* DATE: 4/1/14  
EXPIRES: 11/30/15  
CONSULTANT: H.W. LOCHNER, INC.  
APPLIES TO DRAWINGS: 1-13, 63-69

D-91-272-14

LOCATION OF SECTION INDICATED THUS: - [ ] -

BY: *Patrick J. O'Brien* DATE: 4-1-14  
EXPIRES: 11-30-15  
CONSULTANT: KNIGHT ENGINEERS & ARCHITECTS  
APPLIES TO DRAWINGS: 14-33, 39-62

STATE OF ILLINOIS  
DEPARTMENT OF TRANSPORTATION  
DIVISION OF HIGHWAYS

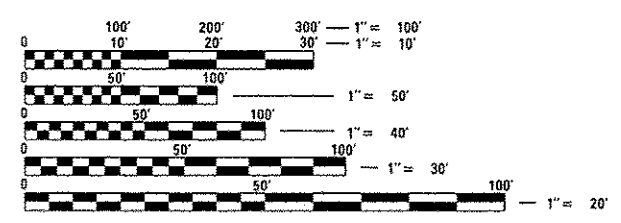
SUBMITTED: April 1, 2014

*John Eastman Jr.*  
DEPUTY DIRECTOR OF HIGHWAYS, REGION ENGINEER

May 9, 2014  
*John D. Baranzelli DE*  
ENGINEER OF DESIGN AND ENVIRONMENT

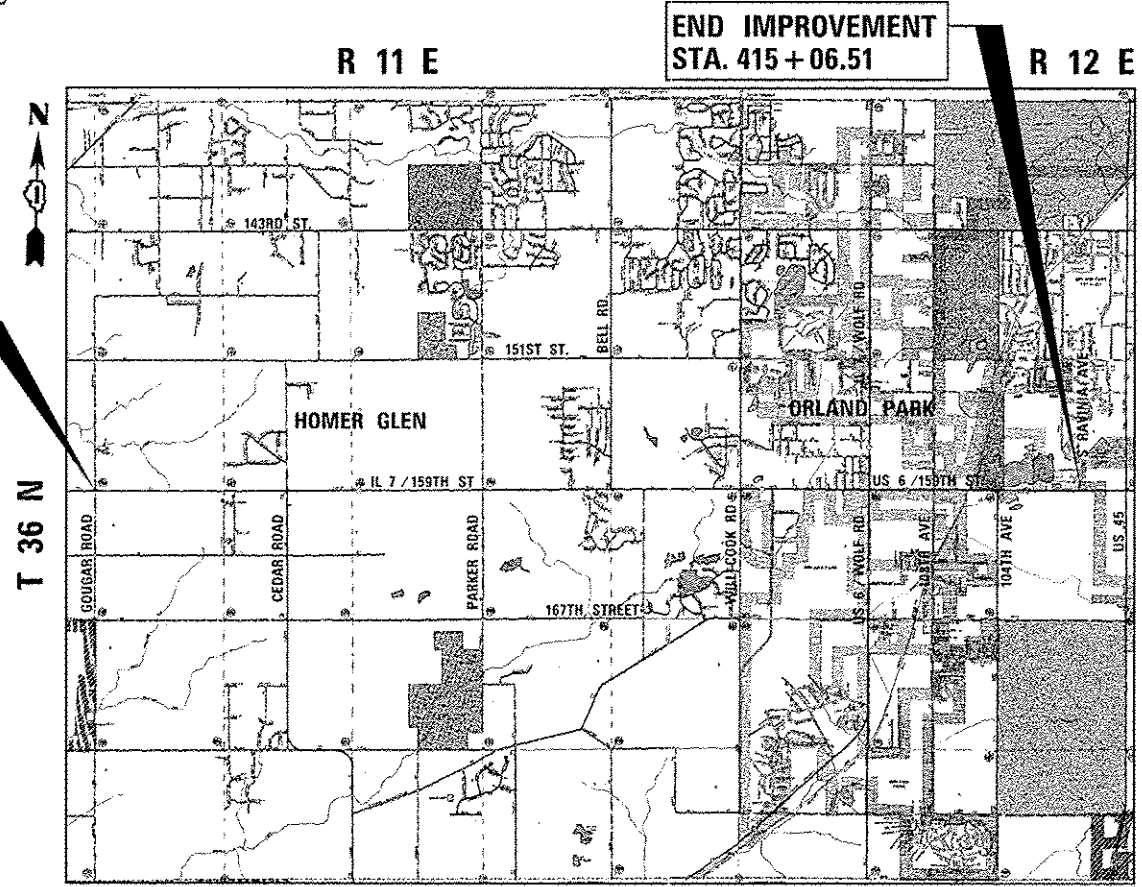
May 9, 2014  
*Osman Osman PE*  
DIRECTOR OF HIGHWAYS, CHIEF ENGINEER

BY: *Lance A. Vinsel* DATE: 4-1-14  
EXPIRES: 11-30-14  
CONSULTANT: MILLENNIA PROFESSIONAL SERVICES  
APPLIES TO DRAWINGS: 3A-38



FULL SIZE PLANS HAVE BEEN PREPARED USING STANDARD ENGINEERING SCALES. REDUCED SIZED PLANS WILL NOT CONFORM TO STANDARD SCALES. IN MAKING MEASUREMENTS ON REDUCED PLANS, THE ABOVE SCALES MAY BE USED.

J.U.L.I.E.  
JOINT UTILITY LOCATION INFORMATION FOR EXCAVATION  
1-800-892-0123  
OR 811



PROJECT ENGINEER: CRAIG BAUER (847) 705-4265  
PROJECT MANAGER: LONG TRAN (847) 705-4232

**LOCHNER**  
H.W. LOCHNER, INC.  
CONSULTING ENGINEERS & PLANNERS  
225 WEST WASHINGTON STREET, 12TH FLOOR  
CHICAGO, IL 60606

GROSS LENGTH = 40,075.51 FT. = 7.590 MILES  
NET LENGTH = 40,015.76 FT. = 7.579 MILES

CONTRACT NO. 60X92

PRINTED BY THE AUTHORITY  
OF THE STATE OF ILLINOIS