

P.A. RTE.	SECTION	COUNTY	TOTAL SHEETS	SHEET NO.
VAR.	2014-026RS	LAKE	210	1
		ILLINOIS	CONTRACT NO. 60Y12	

**STATE OF ILLINOIS**  
**DEPARTMENT OF TRANSPORTATION**  
**DIVISION OF HIGHWAYS**

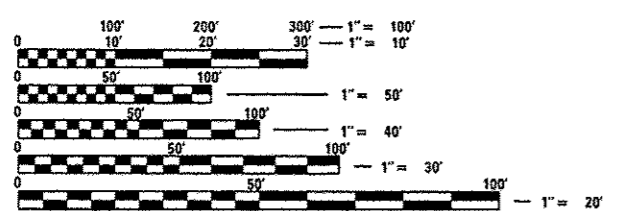
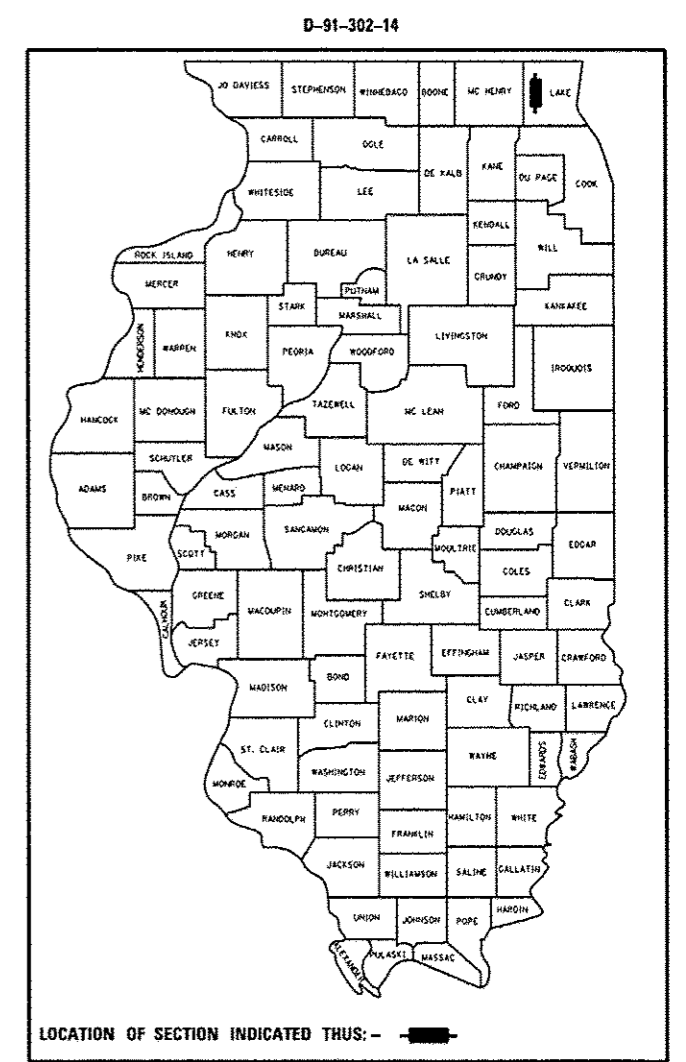
**PROPOSED**  
**HIGHWAY PLANS**

FOR INDEX OF SHEETS, SEE SHEET NO. 2

THIS PROJECT IS LOCATED IN:  
 THE VILLAGE OF ANTIOCH  
 THE VILLAGE OF FOX LAKE  
 THE VILLAGE OF GRAYSLAKE  
 THE VILLAGE OF MUNDELEIN  
 THE VILLAGE OF ROUND LAKE

**VARIOUS ROUTES**  
**SECTION: 2014-026RS**  
**VARIOUS LOCATIONS IN WESTERN LAKE COUNTY**  
**INTERMITTENT RESURFACING**  
**LAKE COUNTY**  
**C-91-302-14**

FOR GENERAL LOCATION MAP, SEE SHEET NO. 4



FULL SIZE PLANS HAVE BEEN PREPARED USING STANDARD ENGINEERING SCALES. REDUCED SIZED PLANS WILL NOT CONFORM TO STANDARD SCALES. IN MAKING MEASUREMENTS ON REDUCED PLANS, THE ABOVE SCALES MAY BE USED.

J.U.L.I.E.  
 JOINT UTILITY LOCATION INFORMATION FOR EXCAVATION  
 1-800-892-0123  
 OR 811

PROJECT ENGINEER: DANIEL WILGREEN (847) 705-4240  
 PROJECT MANAGER: KEN ENG (847) 705-4247

CONTRACT NO. 60Y12

STATE OF ILLINOIS  
 DEPARTMENT OF TRANSPORTATION  
 DIVISION OF HIGHWAYS

SUBMITTED April 3, 2014  
*John P. Johnson*  
 DEPUTY DIRECTOR OF HIGHWAYS, REGION ENGINEER

May 9, 2014  
*Dan D. Baranzoli* P.E.  
 ENGINEER OF DESIGN AND ENVIRONMENT

May 9, 2014  
*Omer Osman* P.E.  
 DIRECTOR OF HIGHWAYS, CHIEF ENGINEER

**PRINTED BY THE AUTHORITY**  
**OF THE STATE OF ILLINOIS**