

STATE OF ILLINOIS
DEPARTMENT OF TRANSPORTATION
DIVISION OF HIGHWAYS

PLANS FOR PROPOSED
FEDERAL AID HIGHWAY

FAP 350 (CICERO AVENUE)
FAP 353 US30 (LINCOLN HIGHWAY) TO FAU 1629 (VOLLMER ROAD)
STREET LIGHTING IMPROVEMENTS
PROJECT NO.: M-4003(218)
SECTION NO.: 13-00062-00-LT
VILLAGE of MATTESON
COOK COUNTY
JOB NO.: C-91-394-13

F. A. P. NO.	SECTION	COUNTY	TOTAL SHEETS	SHEET NO.
350	13-00062-00-LT	COOK	13	1
STA. 107+38		TO STA. 185+36		
FED. ROAD DIST. NO.	ILLINOIS	FED. AID PROJECT	M-4003(218)	

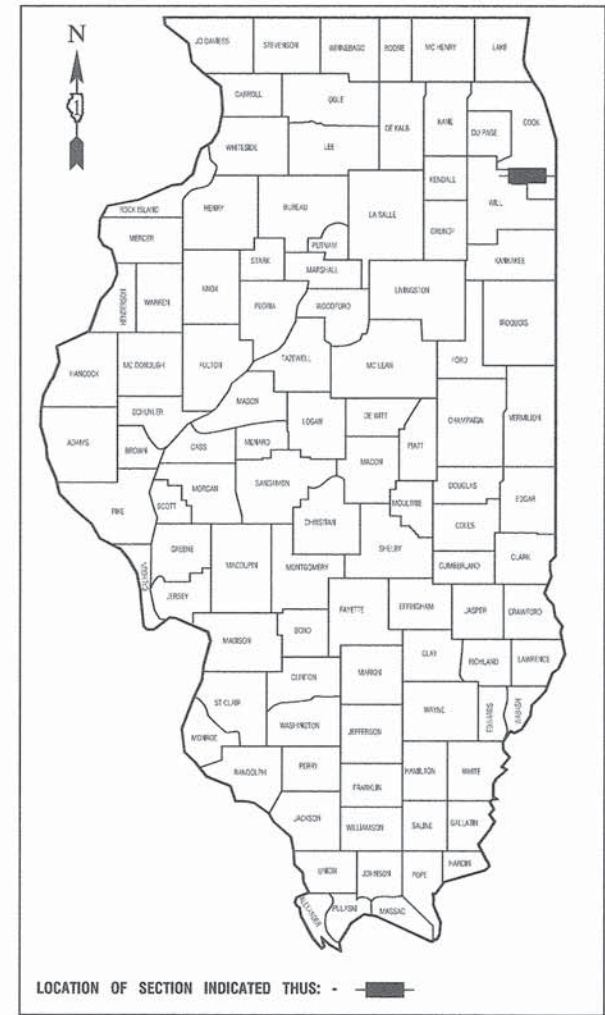
CONTRACT #61A20

INDEX OF SHEETS

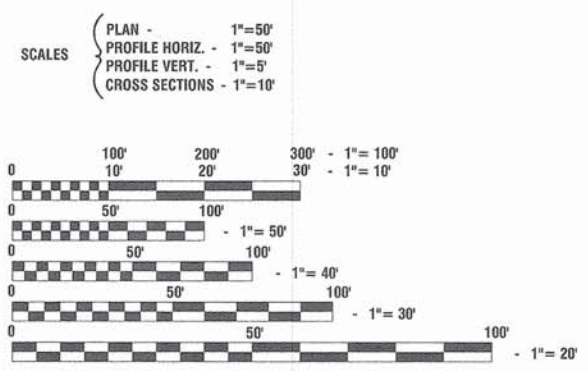
1. COVER SHEET
2. SUMMARY OF QUANTITIES
- 3.-8. STREET LIGHTING PLANS
9. SINGLE LINE DIAGRAM
- 10.-13. STREET LIGHTING DETAILS

HIGHWAY STANDARDS

- | | |
|-----------|--|
| 000001-06 | STANDARD SYMBOLS, ABBREVIATIONS AND PATTERNS |
| 701606-09 | URBAN LANE CLOSURE, MULTILANE, 2W, WITH MOUNTABLE MEDIAN |
| 701701-09 | URBAN LANE CLOSURE, MULTILANE INTERSECTION |
| 701801-05 | SIDEWALK, CORNER, OR CROSSWALK CLOSURE |
| 701901-03 | TRAFFIC CONTROL DEVICES |

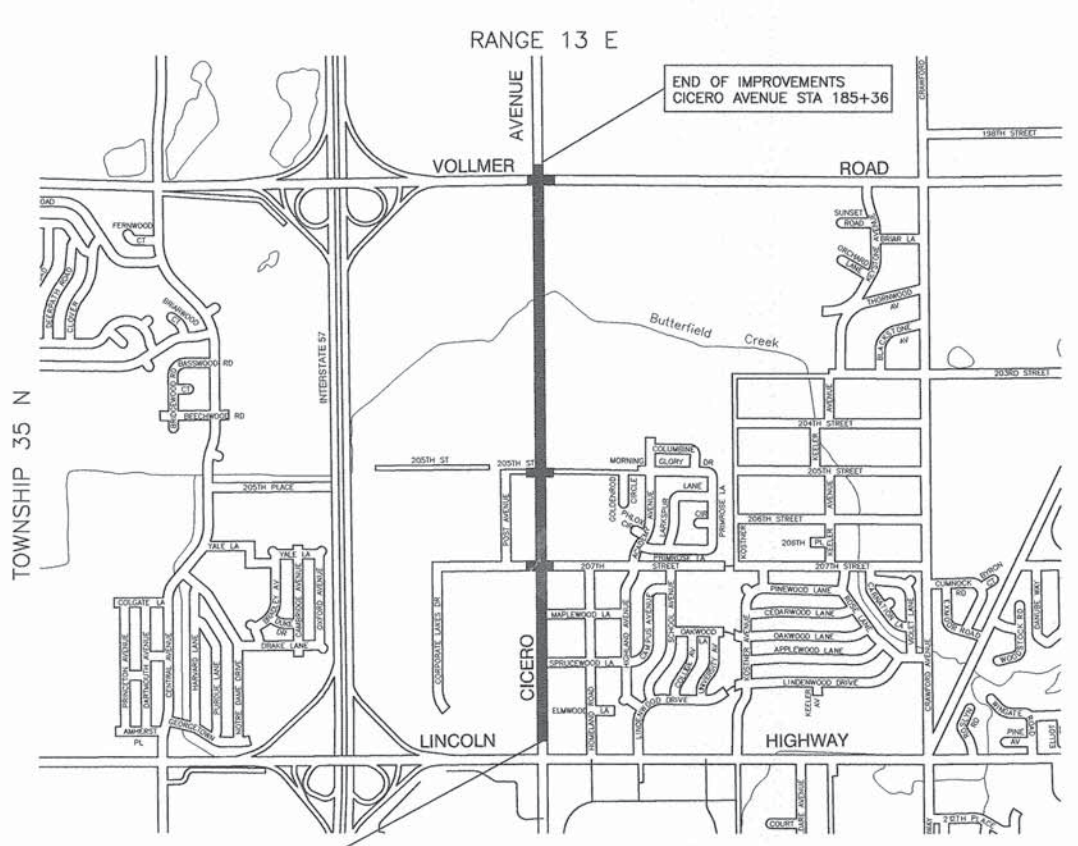


CICERO AVENUE	
2013 ADT -	17,000
2040 ADT -	25,000
POSTED SPEED LIMIT -	40,45,50 mph
DESIGN PERIOD -	20 YEARS
DESIGN SPEED LIMIT -	45,50,55 mph
STREET CLASSIFICATION -	MAJOR-MEDIUM



FULL SIZE PLANS HAVE BEEN PREPARED USING STANDARD ENGINEERING SCALES, REDUCED SIZED PLANS WILL NOT CONFORM TO STANDARD SCALES, IN MAKING MEASUREMENTS ON REDUCED PLANS, THE ABOVE SCALES MAY BE USED.

J. U. L. I. E.
JOINT UTILITY LOCATION INFORMATION FOR EXCAVATION
1-800-892-0123 or 811



LOCATION MAP
GROSS LENGTH=7,798 FEET=1.48 MILES
NET LENGTH=7,798 FEET=1.48 MILES
SCALE = NONE

STATE OF ILLINOIS DEPARTMENT OF TRANSPORTATION
DIVISION OF HIGHWAYS

Approved: Carl D. [Signature] 3/28/2014
President, Village of Matteson

Passed: April 7, 2014
[Signature]
District 1 Engineer of Local Roads & Streets

Released for Bid Based on Limited Review: April 7, 2014
[Signature]
Deputy Director of Highways, Region 1 Engineer

PRINTED BY THE AUTHORITY OF THE STATE OF ILLINOIS

PREPARED BY OR UNDER THE DIRECT SUPERVISION OF:
David W. Shilling
3/28/2014

FEDERAL AID PROGRAM ENGINEER FAWAD AQUEEL, P.E. (847)705-4021 SCHAUMBURG, IL.
CONSULTANTS: ROBINSON ENGINEERING, LTD. 708-331-6700

CONTRACT NO. 61A20

SUMMARY OF QUANTITIES					CONSTRUCTION TYPE CODE
S.I.	CODE NO.	PAY ITEM	UNIT	QUAN	0021
	21301084	EXPLORATION TRENCH 84" DEPTH	FOOT	200	200
	25200110	SODDING, SALT TOLERANT	SQ YD	2400	2400
	25200200	SUPPLEMENTAL WATERING	UNIT	350	350
*	42400200	PORTLAND CEMENT CONCRETE SIDEWALK 5 INCH	SQ FT	450	450
*	44000600	SIDEWALK REMOVAL	SQ FT	450	450
	67100100	MOBILIZATION	L SUM	1	1
	70102625	TRAFFIC CONTROL AND PROTECTION, STANDARD 701606	L SUM	1	1
	70102635	TRAFFIC CONTROL AND PROTECTION, STANDARD 701701	L SUM	1	1
	70102640	TRAFFIC CONTROL AND PROTECTION, STANDARD 701801	L SUM	1	1
	80400100	ELECTRIC SERVICE INSTALLATION	EACH	2	2
	80400200	ELECTRIC UTILITY SERVICE CONNECTION	L SUM	1	1
	81028210	UNDERGROUND CONDUIT, GALVANIZED STEEL, 2 1/2" DIA.	FOOT	1900	1900
	81028240	UNDERGROUND CONDUIT, GALVANIZED STEEL, 4" DIA.	FOOT	195	195
	81603136	UNIT DUCT, 600V, 5-1C NO.4, 1/C NO.6 GROUND, (XLP-TYPE USE), 1 1/2" DIA.POLYETHYLENE	FOOT	19000	19000
	81702440	ELECTRIC CABLE IN CONDUIT, 600V(XLP-TYPE USE) 3-1/C NO. 1/0	FOOT	360	360
	82102310	LUMINAIRE, SODIUM VAPOR, HORIZONTAL MOUNT, 310 WATT	EACH	85	85
	82500365	LIGHTING CONTROLLER, BASE MOUNTED, 480VOLT, 150AMP	EACH	2	2
	83050800	LIGHT POLE, ALUMINUM, 47.5 FT. M.H., 12 FT. MAST ARM	EACH	44	44
	83600200	LIGHT POLE FOUNDATION, 24" DIAMETER	FOOT	64	64
	83600365	LIGHT POLE FOUNDATION, METAL, 15" BOLT CIRCLE, 10" X 8"	EACH	77	77
	83800205	BREAKAWAY DEVICE, TRANSFORMER BASE, 15 INCH BOLT CIRCLE	EACH	85	85
	84200500	REMOVAL OF LIGHTING UNIT, SALVAGE	EACH	1	1
	84200804	REMOVAL OF POLE FOUNDATION	EACH	1	1
	Z0013798	CONSTRUCTION LAYOUT	L SUM	1	1

SUMMARY OF QUANTITIES					CONSTRUCTION TYPE CODE
S.I.	CODE NO.	PAY ITEM	UNIT	QUAN	0021
Δ	Z0076600	TRAINEES	HOUR	1000	1000
Δ	Z0076604	TRAINEES TRAINING PROGRAM GRADUATE	HOUR	1000	1000
	X8300001	LIGHT POLE, SPECIAL	EACH	41	41
*	X0327611	REMOVE AND REINSTALL BRICK PAVER	SQ FT	150	150

* - INDICATES SPECIALTY ITEMS
Δ - 0042

GENERAL NOTES:

- ALL WORK TO CONFORM TO THE 2011 NATIONAL ELECTRICAL CODE AND ANY APPLICABLE LOCAL CODES.
- CONTRACTOR TO VERIFY LOCATION OF ALL UNDERGROUND UTILITIES BEFORE TRENCHING OR AUGURING.
- CONTRACTOR SHALL CALL JULIE FOR UTILITY LOCATES. PRIOR TO CONSTRUCTION, ANY OVERHEAD CLEARANCE ISSUES SHOULD BE COORDINATED WITH COMED FOR APPROVAL.
- ALL CONDUIT TO BE 2 1/2" DIAMETER UNLESS OTHERWISE SPECIFIED.
- ANY TREE TRIMMING REQUIRED AS DIRECTED BY THE ENGINEER SHALL BE PERFORMED BY THE CONTRACTOR, AND THE COST OF THIS WORK SHALL BE CONSIDERED INCIDENTAL TO THE CONTRACT.
- CONTRACTOR SHALL TAKE ALL NECESSARY MEASURES TO RESTORE ANY SPECIALIZED LANDSCAPING, (i.e. DECORATIVE ROCKS, SHRUBS, PLANTS, ECT.) OR SHALL REPLACE IT, THE COST OF WHICH SHALL BE CONSIDERED INCLUDED IN THE COST OF THE CONTRACT.
- CARE IS TO BE TAKEN AS NOT TO DAMAGE ANY OF THE EXISTING TRAFFIC SIGNAL CONDUITS, DETECTORS AND EQUIPMENT. IF ANY OF THE TRAFFIC SIGNAL CONDUIT AND/OR EQUIPMENT IS DAMAGED, THE CONTRACTOR SHALL REPAIR AND/OR REPLACE THE CONDUIT AND/OR EQUIPMENT AT NO COST TO THE COUNTY, STATE, OR THE VILLAGE.
- THE CONTRACTOR SHALL MAKE SPECIAL NOTE OF THE REQUIREMENT FOR BURIED WARNING TAPE. THE INSTALLATION OF THE TAPE SHALL BE INSPECTED AND APPROVED BY THE RESIDENT ENGINEER DURING PLOWING OPERATIONS, AS APPLICABLE.
- THE CONTRACTOR SHALL BE RESPONSIBLE FOR THE ESTABLISHMENT OF FINISHED GRADE. THE RESIDENT ENGINEER MAY ASSIST THE CONTRACTOR, AS APPLICABLE, BUT THE RESPONSIBILITY FOR COORDINATING THE FINISHED GRADE ELEVATION WITH THE TOP OF THE FOUNDATION HEIGHTS AND THE LIGHT SHALL REMAIN WITH THE CONTRACTOR.
- NO POLES SHALL BE ERECTED UNTIL THE RESPECTIVE FOUNDATIONS HAVE CURED, AS APPROVED BY THE ENGINEER.
- THE CONTRACTOR SHALL MAKE SPECIAL NOTE OF THE REQUIREMENTS FOR WIRE MARKERS AND SHALL TAG ALL WIRE MARKERS AND SHALL TAG ALL WIRE ACCORDINGLY.
- EQUIPMENT GROUND CONDUCTORS SHALL BE SPLICED AND BONDED AT EACH LIGHT POLE OR OTHER PIECE OF EQUIPMENT.
- CONDUIT AND UNIT DUCT MUST BE POSITIONED IN THE FIELD TO AVOID CONFLICT WITH TREES, BUSHES, DRAINS AND OTHER UTILITIES AND LANDSCAPING.
- THE EXACT LOCATIONS OF ALL UTILITIES SHALL BE VERIFIED BY THE CONTRACTOR BEFORE THE INSTALLATION OF ANY COMPONENTS OF THE LIGHTING SYSTEM. FOR THE LOCATIONS OF THE UTILITIES, CALL JULIE TOLL FREE AT 1-800-892-0123 AT LEAST 48 HOURS BEFORE ANY EXCAVATION IS TO TAKE PLACE. IT IS THE CONTRACTOR'S RESPONSIBILITY TO LOCATE EXISTING TRAFFIC SIGNAL CABLES AND CONDUITS.
- SHOULD THERE BE A DELAY BETWEEN THE TOPSOIL AND SODDING OPERATIONS, ALL MAJOR DISTURBED AREAS SHALL BE REQUIRED TO HAVE A SOIL EROSION CONTROL BLANKET INSTALLED.
- SIGNS MOUNTED ON EXISTING POLES SHALL BE RELOCATED TO NEW LIGHT POLES AS DIRECTED BY THE ENGINEER. NEW STAINLESS STEEL BANDS AND HARDWARE SHALL BE USED. THIS WORK SHALL BE CONSIDERED INCIDENTAL TO THE NEW LIGHT POLES.

FILE NAME = 13277-QUAN-01 - IDOT P01

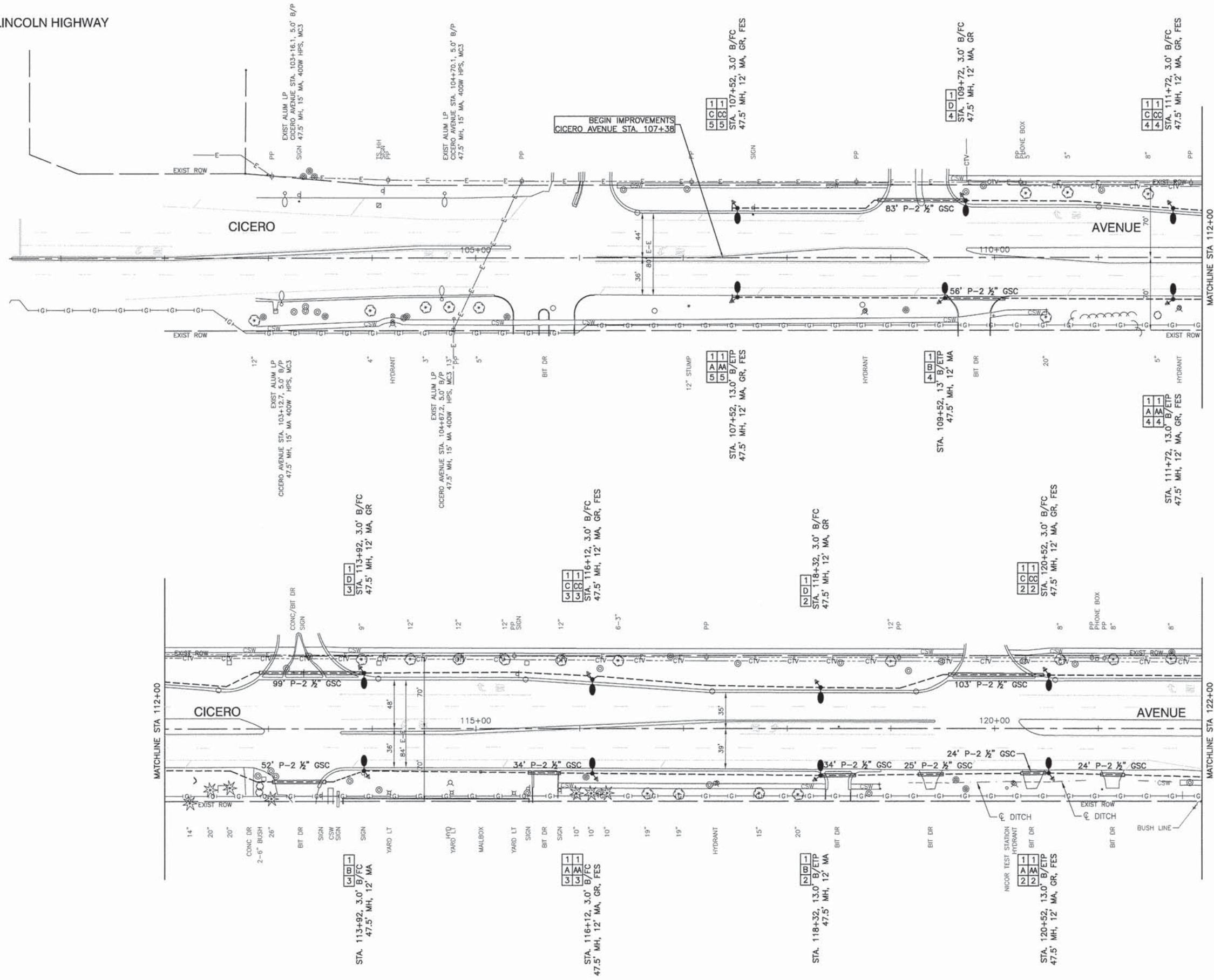
USER NAME =	DESIGNED -- PAP	REVISED --
	CHECKED -- DWS	REVISED --
PLOT SCALE =	DRAWN -- MED	REVISED --
PLOT DATE = 01-31-14	CHECKED -- AG	REVISED --

STATE OF ILLINOIS
DEPARTMENT OF TRANSPORTATION

CICERO AVENUE LINCOLN HIGHWAY TO VOLLMER ROAD SUMMARY OF QUANTITIES		F.A.P RTE. 350	SECTION 13-00062-00-LT	COUNTY COOK	TOTAL SHEETS 13	SHEET NO. 2
SCALE:	SHEET NO. 2 OF 13 SHEETS	STA.	TO STA.	CONTRACT NO. 61A20		
		FED. ROAD DIST. NO. 1	ILLINOIS	FED. AID PROJECT M-4003(218)		



LINCOLN HIGHWAY



- LEGEND:**
- EXISTING STREET LIGHT
 - PROPOSED STREET LIGHT-310W HPS - MC3
 - PROPOSED CONTROLLER
 - P — UNDERGROUND CONDUIT, GALVANIZED STEEL (GSC), PUSHED, SIZE AS NOTED
 - UNIT DUCT, 5-1/C, NO.6 AWG AND NO.6 GROUND, 600V IN 1-1/2" DUCT
 - ┌ RACEWAY (CAPPED)
 - GR GROUND ROD, 5/8" DIA. x 10'
 - (R) REMOVAL OF EXISTING STREET LIGHT (SALVAGE) AND REMOVAL OF LIGHT POLE FOUNDATION
 - FES DUPLEX GFI FESTOON OUTLET
 - MH MOUNTING HEIGHT
 - MA MAST ARM
 - B/FC BEHIND FACE OF CURB
 - B/ETP BEHIND EDGE OF TRAVELED PAVEMENT
 - BDTB BREAKAWAY DEVICE, TRANSFORMER BASE, 15" BOLT CIRCLE
 - CSW EXISTING CONCRETE SIDEWALK
- POLE IDENTIFICATION**
- 1 CABINET NUMBER
 - 2 CIRCUIT
 - 1 POLE POSITION

NOTE:
1. LIGHTING UNITS SHALL HAVE HELIX FOUNDATIONS UNLESS OTHERWISE NOTED.

FILE NAME = 13277-PLAN-01 - P01

USER NAME =	DESIGNED — PAP	REVISED —
PLOT SCALE =	CHECKED — DWS	REVISED —
PLOT DATE = 01-31-14	DRAWN — MED	REVISED —
	CHECKED — AG	REVISED —

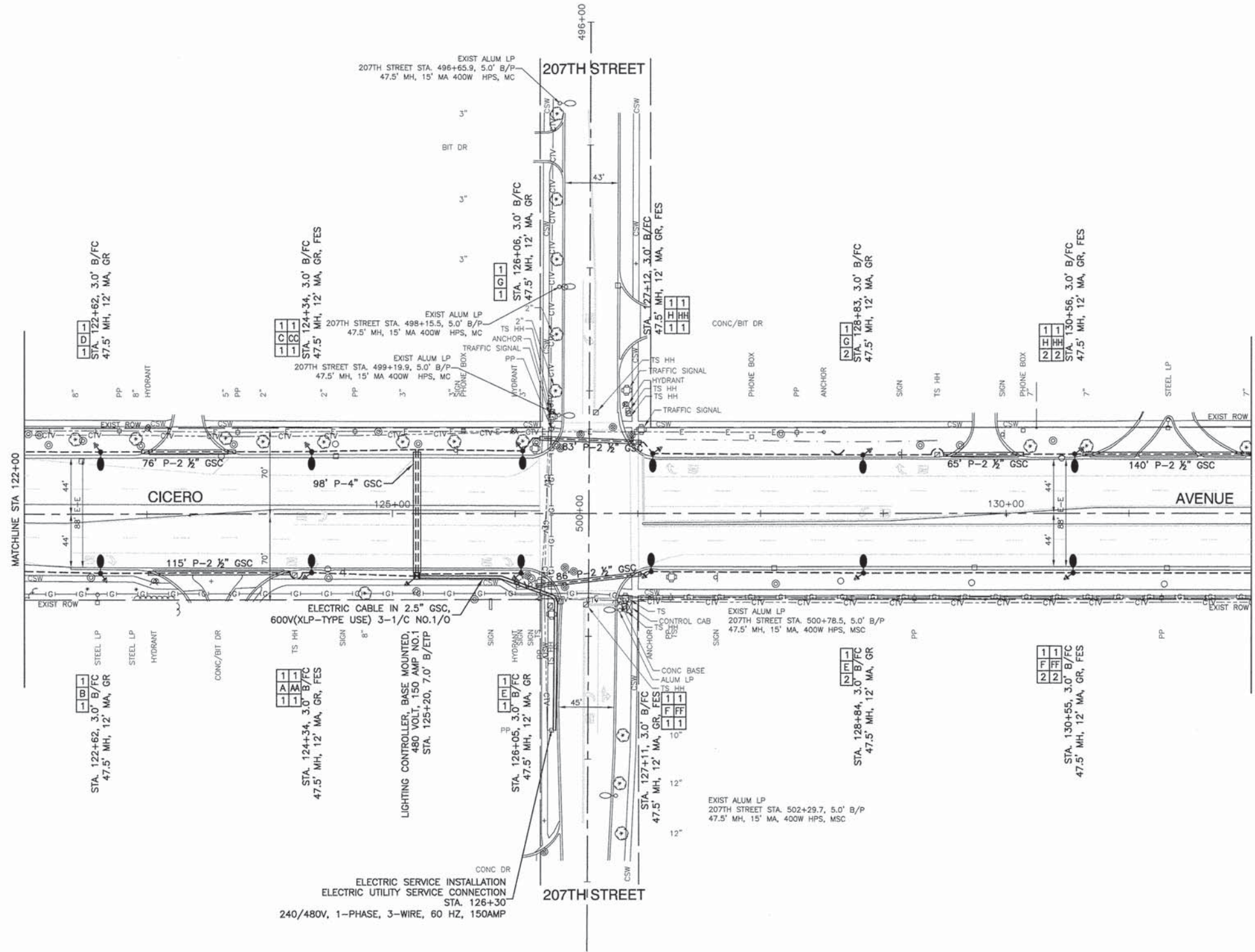
STATE OF ILLINOIS
DEPARTMENT OF TRANSPORTATION

CICERO AVENUE
LINCOLN HIGHWAY TO VOLLMER ROAD
STREET LIGHTING

SCALE: 1"=50' SHEET NO. 3 OF 13 SHEETS STA. TO STA.

F.A.P. RTE. 350	SECTION 13-00062-00-LT	COUNTY COOK	TOTAL SHEETS 13	SHEET NO. 3
CONTRACT NO. 61A20				
FED. ROAD DIST. NO. 1 ILLINOIS FED. AID PROJECT M-4003(218)				

SECTION 15, TOWNSHIP 35, RANGE 12
 SECTION 16, TOWNSHIP 35, RANGE 12
 SECTION 21, TOWNSHIP 35, RANGE 12
 SECTION 22, TOWNSHIP 35, RANGE 12



- LEGEND:**
- EXISTING STREET LIGHT
 - PROPOSED STREET LIGHT—310W HPS - MC3
 - PROPOSED CONTROLLER
 - P — UNDERGROUND CONDUIT, GALVANIZED STEEL (GSC), PUSHED, SIZE AS NOTED
 - UNIT DUCT, 5-1/C, NO.6 AWG AND NO.6 GROUND, 600V IN 1-1/2" DUCT
 - RACEWAY (CAPPED)
 - GR GROUND ROD, 5/8" DIA. x 10'
 - (R) REMOVAL OF EXISTING STREET LIGHT (SALVAGE) AND REMOVAL OF LIGHT POLE FOUNDATION
 - FES DUPLEX GFI FESTOON OUTLET
 - MH MOUNTING HEIGHT
 - MA MAST ARM
 - B/FC BEHIND FACE OF CURB
 - B/ETP BEHIND EDGE OF TRAVELED PAVEMENT
 - BDTB BREAKAWAY DEVICE, TRANSFORMER BASE, 15" BOLT CIRCLE
 - CSW EXISTING CONCRETE SIDEWALK
- POLE IDENTIFICATION**
- CABINET NUMBER
 — C — CIRCUIT
 — 1 — POLE POSITION

NOTE:
 1. LIGHTING UNITS SHALL HAVE HELIX FOUNDATIONS UNLESS OTHERWISE NOTED.

FILE NAME = 13277-PLAN-01 - P02

USER NAME =	DESIGNED — PAP	REVISED —
PLOT SCALE =	CHECKED — DWS	REVISED —
PLOT DATE = 01-31-14	DRAWN — MED	REVISED —
	CHECKED — AG	REVISED —

STATE OF ILLINOIS
 DEPARTMENT OF TRANSPORTATION

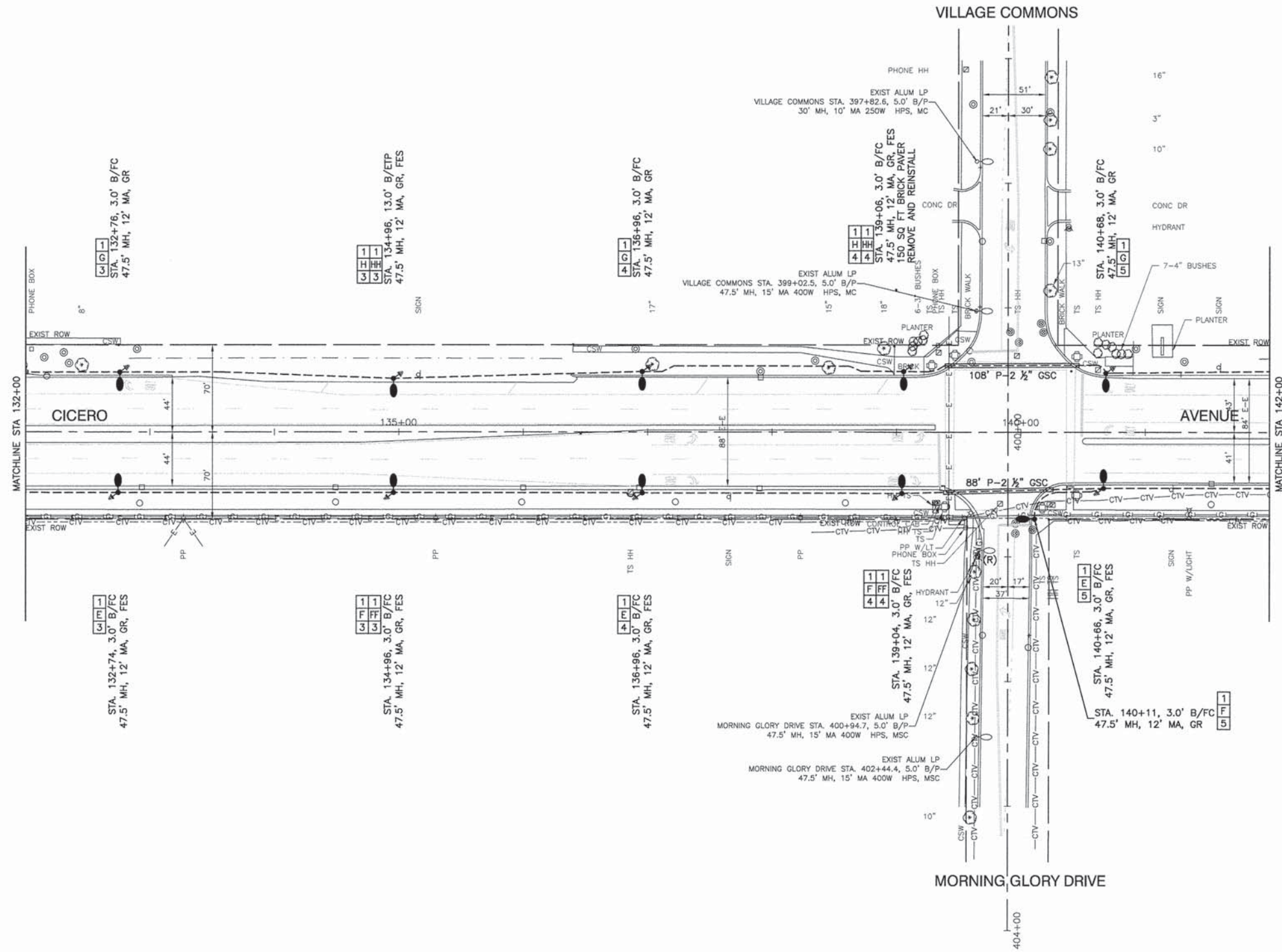
CICERO AVENUE
 LINCOLN HIGHWAY TO VOLLMER ROAD
 STREET LIGHTING

SCALE: 1"=50'

SHEET NO. 4 OF 13 SHEETS

STA. TO STA.

F.A.P. RTE.	SECTION	COUNTY	TOTAL SHEETS	SHEET NO.
350	13-00062-00-LT	COOK	13	4
CONTRACT NO. 61A20				
FED. ROAD DIST. NO. 1 ILLINOIS FED. AID PROJECT M-4003(218)				



- LEGEND:**
- EXISTING STREET LIGHT
 - PROPOSED STREET LIGHT-310W HPS - MC3
 - PROPOSED CONTROLLER
 - P — UNDERGROUND CONDUIT, GALVANIZED STEEL (GSC), PUSHED, SIZE AS NOTED
 - UNIT DUCT, 5-1/C, NO.6 AWG AND NO.6 GROUND, 600V IN 1-1/2" DUCT
 - RACEWAY (CAPPED)
 - ⊕ GROUND ROD, 5/8" DIA. x 10'
 - (R) REMOVAL OF EXISTING STREET LIGHT (SALVAGE) AND REMOVAL OF LIGHT POLE FOUNDATION
 - FES DUPLEX GFI FESTOON OUTLET
 - MH MOUNTING HEIGHT
 - MA MAST ARM
 - B/FC BEHIND FACE OF CURB
 - B/ETP BEHIND EDGE OF TRAVELED PAVEMENT
 - B/TB BREAKAWAY DEVICE, TRANSFORMER BASE, 15" BOLT CIRCLE
 - CSW EXISTING CONCRETE SIDEWALK
- POLE IDENTIFICATION**
-
- 1 CABINET NUMBER
 - C CIRCUIT
 - 1 POLE POSITION

NOTE:
1. LIGHTING UNITS SHALL HAVE HELIX FOUNDATIONS UNLESS OTHERWISE NOTED.

FILE NAME = 13277-PLAN-01 - P03A

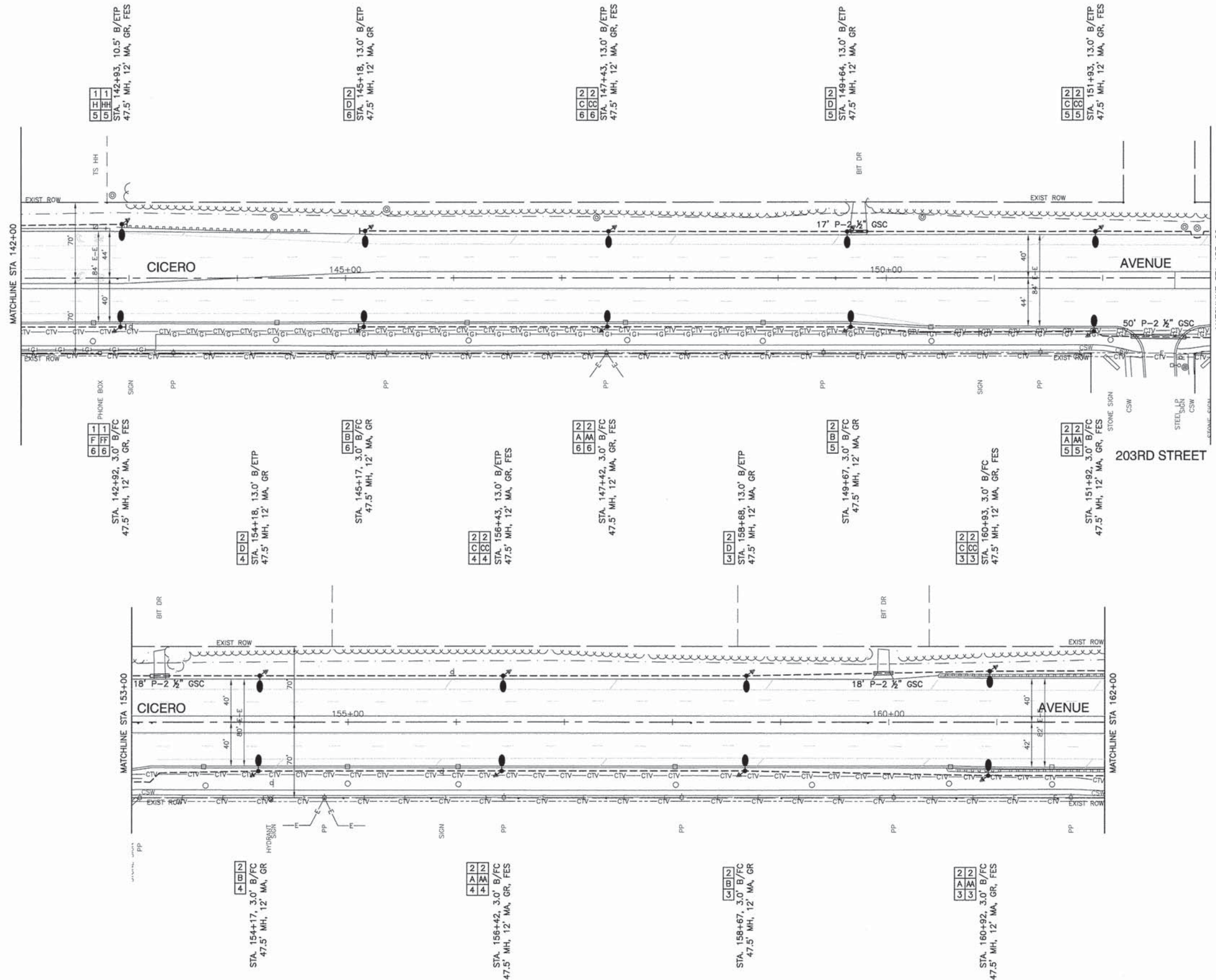
USER NAME =	DESIGNED — PAP	REVISED —
PLOT SCALE =	CHECKED — DWS	REVISED —
PLOT DATE = 01-31-14	DRAWN — MED	REVISED —
	CHECKED — AG	REVISED —

STATE OF ILLINOIS
DEPARTMENT OF TRANSPORTATION

CICERO AVENUE
LINCOLN HIGHWAY TO VOLLMER ROAD
STREET LIGHTING

SCALE: 1"=50' SHEET NO. 5 OF 13 SHEETS STA. TO STA.

F.A.P RTE.	SECTION	COUNTY	TOTAL SHEETS	SHEET NO.
350	13-00062-00-LT	COOK	13	5
CONTRACT NO. 61A20				
FED. ROAD DIST. NO. 1 ILLINOIS FED. AID PROJECT M-4003(218)				



- LEGEND:**
- EXISTING STREET LIGHT
 - PROPOSED STREET LIGHT-310W HPS - MC3
 - PROPOSED CONTROLLER
 - P — UNDERGROUND CONDUIT, GALVANIZED STEEL (GSC), PUSHED, SIZE AS NOTED
 - UNIT DUCT, 5-1/C, NO.6 AWG AND NO.6 GROUND, 600V IN 1-1/2" DUCT
 - RACEWAY (CAPPED)
 - ⊗ GR GROUND ROD, 5/8" DIA. x 10'
 - (R) REMOVAL OF EXISTING STREET LIGHT (SALVAGE) AND REMOVAL OF LIGHT POLE FOUNDATION
 - FES DUPLEX GFI FESTOON OUTLET
 - MH MOUNTING HEIGHT
 - MA MAST ARM
 - B/FC BEHIND FACE OF CURB
 - B/ETP BEHIND EDGE OF TRAVELED PAVEMENT
 - BOTB BREAKAWAY DEVICE, TRANSFORMER BASE, 15" BOLT CIRCLE
 - CSW EXISTING CONCRETE SIDEWALK
- POLE IDENTIFICATION**
- 1 CABINET NUMBER
C CIRCUIT
1 POLE POSITION

NOTE:
1. LIGHTING UNITS SHALL HAVE HELIX FOUNDATIONS UNLESS OTHERWISE NOTED.

FILE NAME = 13277-PLAN-01 - P03

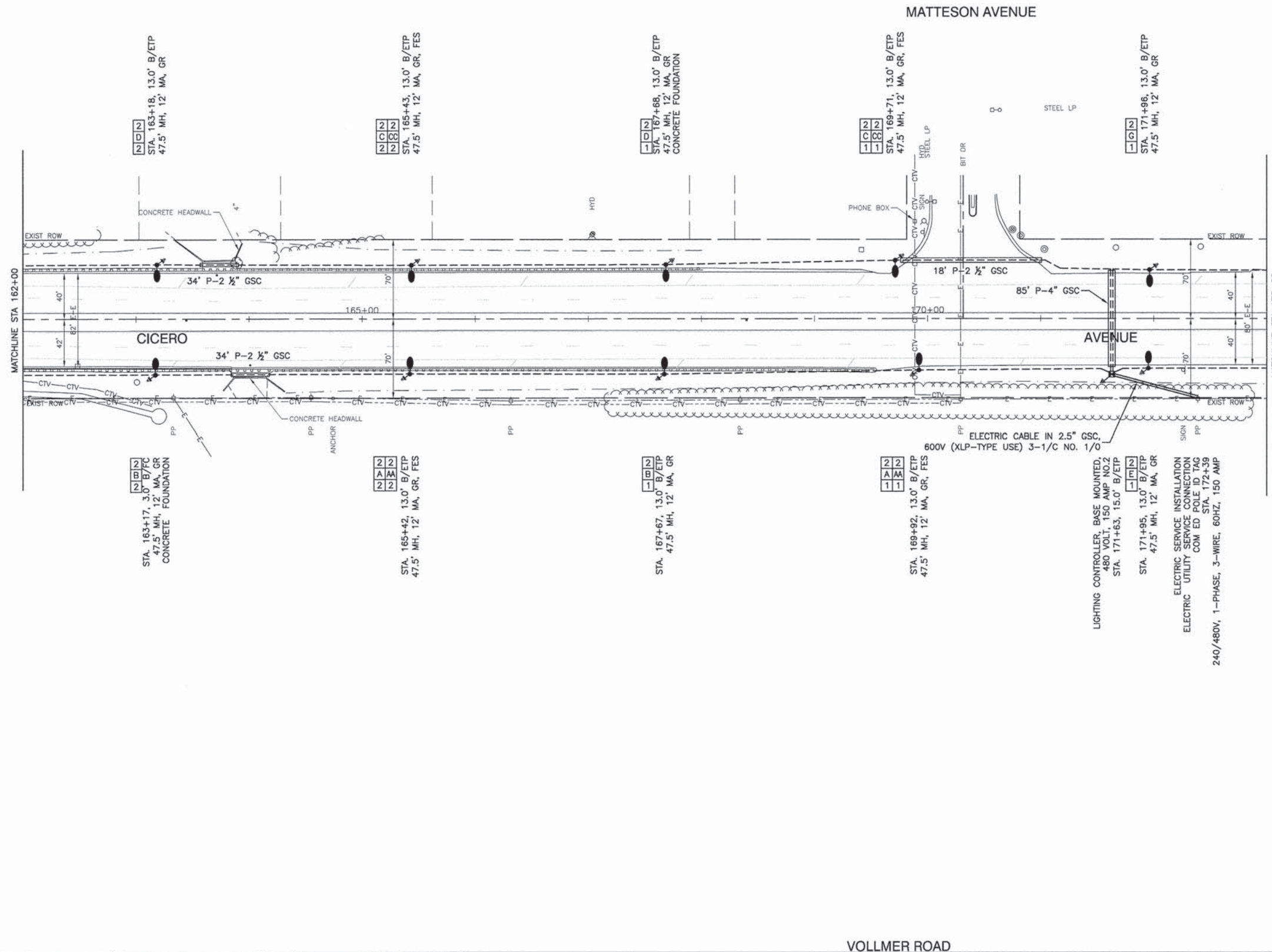
USER NAME =	DESIGNED — PAP	REVISED —
PLOT SCALE =	CHECKED — DWS	REVISED —
PLOT DATE = 01-31-14	DRAWN — MED	REVISED —
	CHECKED — AG	REVISED —

**STATE OF ILLINOIS
DEPARTMENT OF TRANSPORTATION**

**CICERO AVENUE
LINCOLN HIGHWAY TO VOLLMER ROAD
STREET LIGHTING**

SCALE: 1"=50' SHEET NO. 6 OF 13 SHEETS STA. TO STA.

F.A.P. RTE. 350	SECTION 13-00062-00-LT	COUNTY COOK	TOTAL SHEETS 13	SHEET NO. 6
CONTRACT NO. 61A20				
FED. ROAD DIST. NO. 1 ILLINOIS FED. AID PROJECT M-4003(216)				



- LEGEND:**
- EXISTING STREET LIGHT
 - PROPOSED STREET LIGHT-310W HPS - MC3
 - PROPOSED CONTROLLER
 - P — UNDERGROUND CONDUIT, GALVANIZED STEEL (GSC), PUSHED, SIZE AS NOTED
 - UNIT DUCT, 5-1/C, NO.6 AWG AND NO.6 GROUND, 600V IN 1-1/2" DUCT
 - ┌ RACEWAY (CAPPED)
 - ⊥ GR GROUND ROD, 5/8" DIA. x 10'
 - (R) REMOVAL OF EXISTING STREET LIGHT (SALVAGE) AND REMOVAL OF LIGHT POLE FOUNDATION
 - FES DUPLEX GFI FESTOON OUTLET
 - MH MOUNTING HEIGHT
 - MA MAST ARM
 - B/FC BEHIND FACE OF CURB
 - B/ETP BEHIND EDGE OF TRAVELED PAVEMENT
 - BDTB BREAKAWAY DEVICE, TRANSFORMER BASE, 15" BOLT CIRCLE
 - CSW EXISTING CONCRETE SIDEWALK
- POLE IDENTIFICATION**
- 1 CABINET NUMBER
C CIRCUIT
1 POLE POSITION

NOTE:
1. LIGHTING UNITS SHALL HAVE HELIX FOUNDATIONS UNLESS OTHERWISE NOTED.

FILE NAME = 13277-PLAN-01 - P04
USER NAME =
PLOT SCALE =
PLOT DATE = 01-31-14

DESIGNED — PAP	REVISED —
CHECKED — DWS	REVISED —
DRAWN — MED	REVISED —
CHECKED — AG	REVISED —

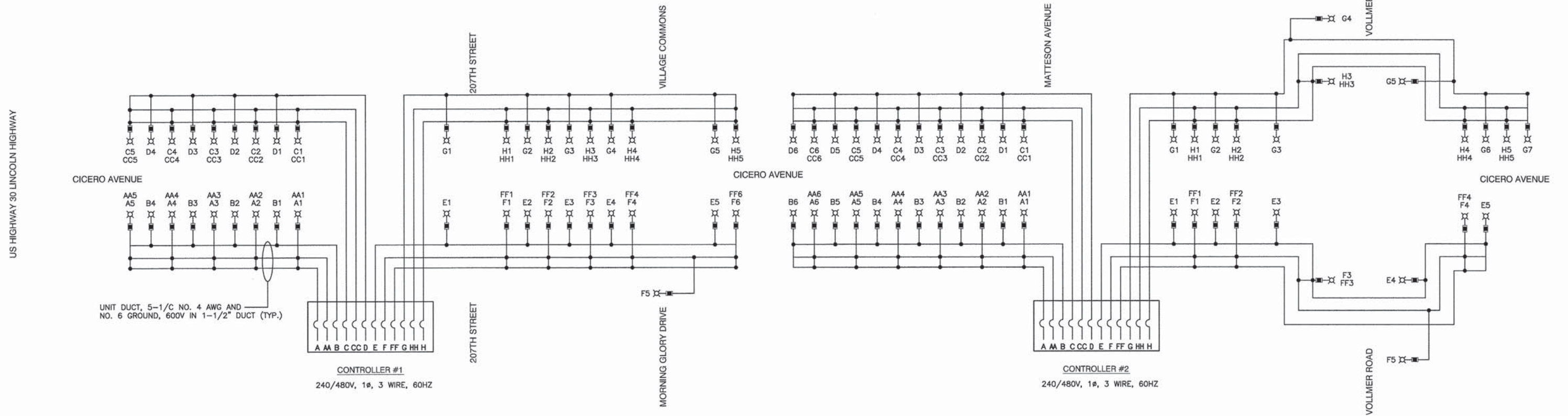
**STATE OF ILLINOIS
DEPARTMENT OF TRANSPORTATION**

**CICERO AVENUE
LINCOLN HIGHWAY TO VOLLMER ROAD
STREET LIGHTING**

SCALE: 1"=50' SHEET NO. 7 OF 13 SHEETS STA. TO STA.

F.A.P. RTE. 350	SECTION 13-00062-00-LT	COUNTY COOK	TOTAL SHEETS 13	SHEET NO. 7
CONTRACT NO. 61A20				
FED. ROAD DIST. NO. 1 ILLINOIS FED. AID PROJECT M-4003(218)				

SECTION 15, TOWNSHIP 35, RANGE 13
 SECTION 16, TOWNSHIP 35, RANGE 13
 SECTION 21, TOWNSHIP 35, RANGE 13
 SECTION 22, TOWNSHIP 35, RANGE 13



UNIT DUCT, 5-1/C NO. 4 AWG AND NO. 6 GROUND, 600V IN 1-1/2" DUCT (TYP.)

CONTROLLER #1
 240/480V, 1Ø, 3 WIRE, 60HZ

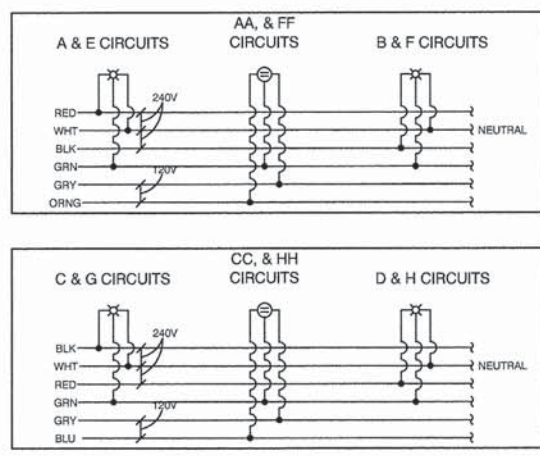
CONTROLLER #2
 240/480V, 1Ø, 3 WIRE, 60HZ

INDIVIDUAL LOAD DATA			
NOMINAL	INPUT VOLTS	MAX INPUT AMPS	INPUT WATTS
310W HPS	240.00	1.50	362.00
FESTOON GFI	120.00	2.50	300.00

NOMINAL WATTAGE	FUSE SIZE
310	5.0 AMP
FESTOON OUTLET	6.0 AMP

FUSE SIZE TABLE

TYPICAL CIRCUIT WIRING



LOAD TABULATIONS CONTROLLER #1			
CIRCUIT	WATTS	AMPS @ 240V	
		RED PHASE	BLACK PHASE
A	1,810	7.50	
B	1,448		6.00
C	1,810		7.50
D	1,448	6.0	
E	1,810	7.50	
F	2,172		9.00
G	1,810		7.50
H	1,810	7.50	
LUMINAIRE SUBTOTAL	12,310	28.50	30.00
AA	1500	6.25	
CC	1500		6.25
FF	1800	7.50	
HH	1500		6.25
GFCI SUBTOTAL	6300	13.75	12.50
CAB TOTAL	18610	42.25	42.50
TOTAL AMPS @ 240 V			84.75

LOAD TABULATIONS CONTROLLER #2			
CIRCUIT	WATTS	AMPS @ 240V	
		RED PHASE	BLACK PHASE
A	2,172	9.00	
B	2,172		9.00
C	2,172		9.00
D	2,172	9.00	
E	1,810	7.50	
F	1,448		6.00
G	2,534		10.50
H	1,810	7.50	
LUMINAIRE SUBTOTAL	16,290	33.00	34.50
AA	1,800	7.50	
CC	1,800		7.50
FF	1,200	5.00	
HH	1,500		6.25
GFCI SUBTOTAL	6300	12.50	13.75
CAB TOTAL	22590	45.50	48.25
TOTAL AMPS @ 240 V			93.75

NOTES
 1. EQUIPMENT GROUND CONDUCTORS SHALL BE SPLICED AND BOUNDED AT EACH LIGHT POLE OR OTHER EQUIPMENT.

- LEGEND**
- ⊗ LUMINAIRE, 310W HPS
 - ⊕ GFCI DUPLEX OUTLET
 - FUSE - REFER TO FUSE SIZE TABLE
 - A LUMINAIRE CIRCUIT, 240V
 - AA GFCI CIRCUIT, 120V
 - ⌋ CIRCUIT BREAKER
 - CONNECTION

FILE NAME = 13277-LGHT-01 - SLWD P01

USER NAME =	DESIGNED - PAP	REVISED -
PLOT SCALE =	CHECKED - DWS	REVISED -
PLOT DATE = 01-31-14	DRAWN - MED	REVISED -
	CHECKED - AG	REVISED -

STATE OF ILLINOIS
 DEPARTMENT OF TRANSPORTATION

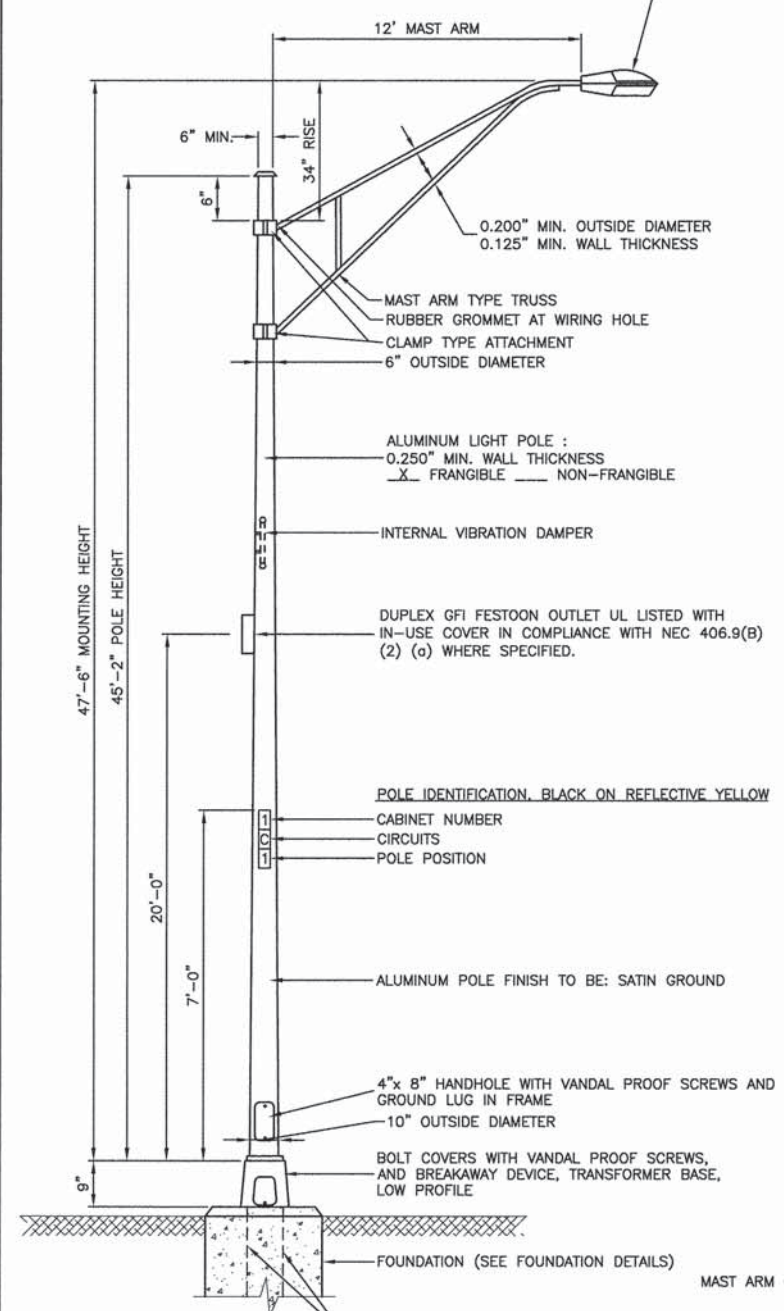
CICERO AVENUE LINCOLN HIGHWAY TO VOLLMER ROAD SINGLE LINE DIAGRAM		F.A.P. RTE. 350	SECTION 13-00062-00-LT	COUNTY COOK	TOTAL SHEETS 13	SHEET NO. 9
SCALE: NONE	SHEET NO. 9 OF 13 SHEETS	STA.	TO STA.	CONTRACT NO. 61A20		
		FED. ROAD DIST. NO. 1	ILLINOIS	FED. AID PROJECT M-4003(218)		

F.A.P. RTE.	SECTION	COUNTY	TOTAL SHEETS	SHEET NO.
350	13-00062-00-LT	COOK	13	10
STA. 102+00		TO STA. 184+00		
FED. ROAD DIST. NO.	ILLINOIS	FED. AID PROJECT	M-4003(218)	

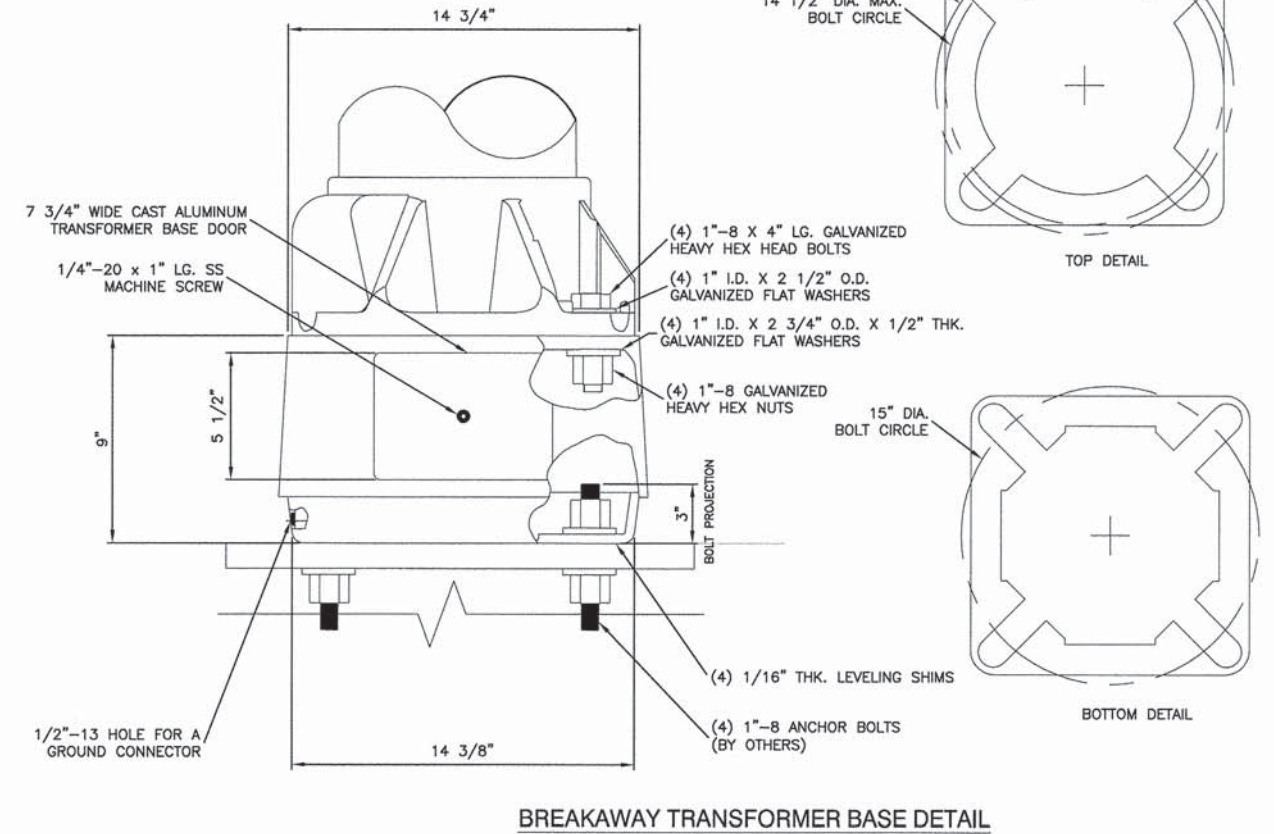
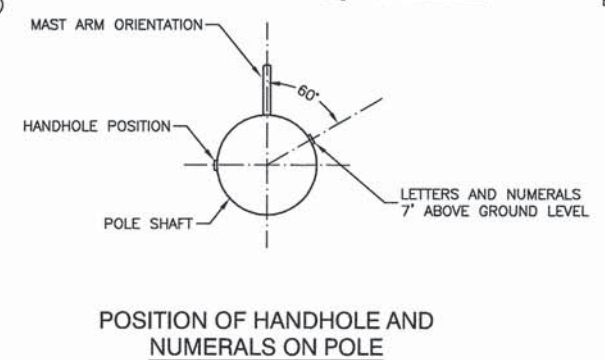
CONTRACT #61A20

LUMINAIRE WITH SAFETY CABLE:
 310 WATT HIGH PRESSURE SODIUM LAMP 240 VOLT BALLAST
 I.E.S. TYPE: MC III LIGHT DISTRIBUTION, FULL CUTOFF FLAT
 LENS TYPE: FLAT
 INITIAL LAMP LUMENS: 37,000
 LAMP LIFE: 24,000 HOURS

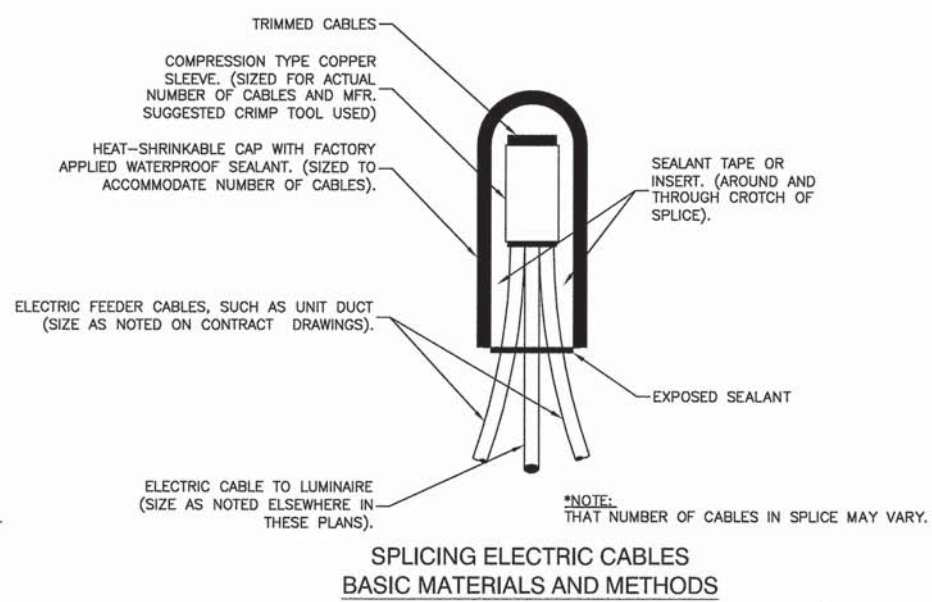
IMPORTANT NOTE:
 TRANSFORMER BASE AND LIGHTPOLE
 TO BE LEVELED AS ONE UNIT. USING
 LEVELING NUTS IF REQUIRED.



TYPICAL POLE INSTALLATION
 NOTES:
 1. THE LIGHTING UNITS SHALL MEET AASHTO DESIGN CRITERIA. DESIGN FOR 90 M.P.H. WIND WITH 30% GUST AND 75 POUND LUMINAIRE HAVING AN E.P.A. OF 1.6 SQ. FT. AND PROPER ICE LOADING.
 2. ALUMINUM ALLOY 6063-T6 SHALL BE USED.
 3. LIGHT POLE AND ASSOCIATED EQUIPMENT TO BE U.L. OR E.T.L. LISTED



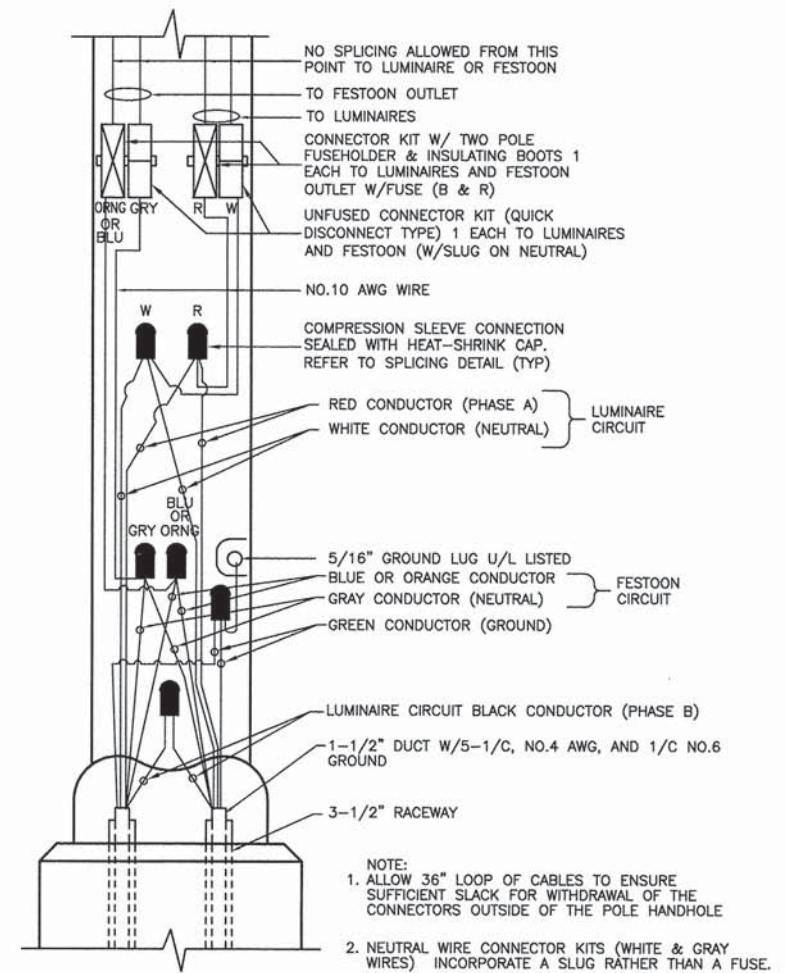
BREAKAWAY TRANSFORMER BASE DETAIL



**SPLICING ELECTRIC CABLES
 BASIC MATERIALS AND METHODS**

NOMINAL WATTAGE	FUSE SIZE
310	5.0 AMP
FESTOON	6.0 AMP

FUSE SIZE TABLE



**POLE HANDHOLE WIRING DIAGRAM
 (TYPICAL FOR LUMINAIRE INSTALLATION
 WITH FESTOON)**

FILE NAME = 13277-DTLS-01 - DTLS-01

USER NAME =	DESIGNED -- PAP	REVISED --
PLOT SCALE =	CHECKED -- DWS	REVISED --
PLOT DATE = 01-31-14	DRAWN -- MED	REVISED --
	CHECKED -- AG	REVISED --

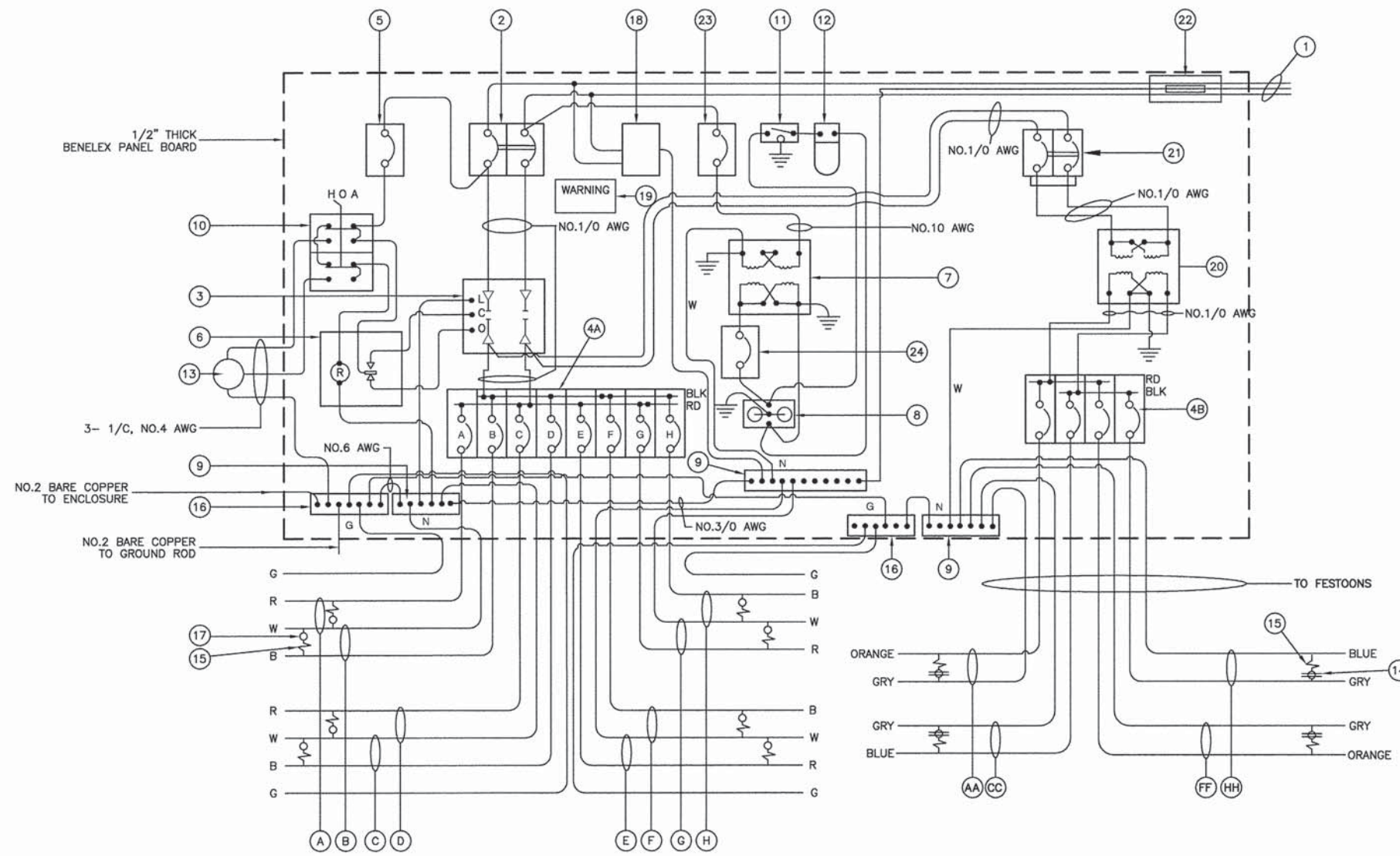
STATE OF ILLINOIS
 DEPARTMENT OF TRANSPORTATION

CICERO AVENUE
 LINCOLN HIGHWAY TO VOLLMER ROAD
 LIGHTING DETAILS
 SCALE: NONE SHEET NO. 10 OF 13 SHEETS STA. TO STA.

F.A.P. RTE.	SECTION	COUNTY	TOTAL SHEETS	SHEET NO.
350	13-00062-00-LT	COOK	13	10
CONTRACT NO. 61A20				
FED. ROAD DIST. NO.	ILLINOIS	FED. AID PROJECT	M-4003(218)	

F. A. P. SHEET NO.	SECTION	COUNTY	TOTAL SHEETS	SHEET NO.
350	13-00062-00-LT	COOK	13	11
STA. 102+00		TO STA. 184+00		
FED. ROAD DIST. NO.	ILLINOIS	FED. AID PROJECT	M-4003(21B)	

CONTRACT #61A20



CONTROLLER WIRING DIAGRAM
CONTROLLER NO. 1 & NO. 2

CONTROLLER WIRING DIAGRAM LEGEND

- ① 3-1/C, NO. 1/0 600V SERVICE WIRE IN 2 1/2" DIA GALVANIZED STEEL CONDUIT FOR 240/480 VOLT, 1Ø, 3 WIRE, 60HZ. SERVICE.
 - ② (1) 150 AMP MAIN CIRCUIT BREAKER, 2 POLE, 600 VOLT, 250 AMP FRAME, NON-INTERCHANGEABLE TRIP INTERRUPTING RATING NEMA - 22,000 AMP AT 480 V.
 - ③ (1) 150 AMP CONTACTOR SWITCH, ELECTRICALLY OPERATED, MECHANICALLY HELD, 2 POLE, 600 VOLT, 240V COIL.
 - ④A (8) 30 AMP CIRCUIT BREAKER, 1 POLE, 240 VOLT, 100 AMP FRAME, NON-INTERCHANGEABLE TRIP RATING NEMA - 22000 AMP AT 240 VOLTS.
 - ④B (4) 30 AMP CIRCUIT BREAKER, 1 POLE, 120 VOLT, 100 AMP FRAME, NON-INTERCHANGEABLE TRIP RATING NEMA - 22000 AMP AT 120 VOLTS.
 - ⑤ (1) 20 AMP CONTROL CIRCUIT-CIRCUIT BREAKER, 1 POLE, 240 VOLT, 100 AMP FRAME, NON-INTERCHANGEABLE TRIP INTERRUPTING RATING NEMA 14000 AMP AT 240 V.
 - ⑥ (1) 25 AMP, 1 POLE DOUBLE THROW, 240 VOLT RELAY
 - ⑦ (1) 1.5 KVA, SINGLE PHASE, ENCAPSULATED TRANSFORMER 240 X 480/120 X 240 VOLT, 60HZ.
 - ⑧ (1) 20 AMP, 120 VOLT DUPLEX GFCI RECEPTACLE MOUNTED IN BOX.
 - ⑨ (3) COPPER NEUTRAL BUS BARS, 1/4"x1"x12" MINIMUM LENGTH MOUNTED ON PANEL WITH 16 LUGS FOR 1/0-14 AWG.
 - ⑩ 3 POSITION SELECTOR SWITCH, 240V, 30 AMP.
 - ⑪ SWITCH FOR LIGHTING FIXTURE MOUNTED IN BOX, 20 AMP.
 - ⑫ WEATHER-PROOF INCANDESCENT LIGHTING FIXTURE WITH 60 WATT, 120 V LAMP.
 - ⑬ PHOTOCCELL MOUNTED TO CABINET, 240 V, 1000 VA. BALLAST RATING, 1-4 FC ON, 3-12 FC OFF, 30 SECOND DELAY, MIN.
 - ⑭ 20 AMP, 120 VOLT DUPLEX GFCI RECEPTACLE MOUNTED TO POLE.
 - ⑮ IN-LINE FUSEHOLDER WITH FUSE AS NOTED IN FUSE TABLE
 - ⑯ (2) COPPER GROUND BUS BARS, 1/4"x1"x12" MINIMUM LENGTH MOUNTED ON PANEL WITH 16 LUGS FOR 1/0-14 AWG.
 - ⑰ LUMINAIRE
 - ⑱ SURGE ARRESTOR, UL LISTED, NEC 280 COMPLIANT, 1Ø, 3 WIRE, 60HZ MAX. 3,405 JOULES @ 240 VOLTS.
 - ⑲ WARNING PLATE TO READ: WARNING, MAINTENANCE CIRCUIT IS LIVE WHEN MAIN BREAKER IS SWITCHED OFF.
 - ⑳ 7.5 KVA, SINGLE PHASE, ENCAPSULATED TRANSFORMER 240x480/120x240 V, 60HZ, MOUNTED ADJACENT TO CONTROLLER.
 - ㉑ 20 AMP CIRCUIT BREAKER, 2 POLE, 600 VOLT, 100 AMP FRAME, NON-INTERCHANGEABLE TRIP INTERRUPTING RATING NEMA - 22000 AMP AT 277 VOLTS. INCLUDE SPLICE BLOCKS OR POWER DISTRIBUTION CONNECTORS AS REQUIRED.
 - ㉒ MILBANK 1Ø, 3 WIRE, 150A METER SOCKET
 - ㉓ 15 AMP CONTROL CIRCUIT-CIRCUIT BREAKER, 1 POLE, 240 VOLT, 100 AMP FRAME, NON-INTERCHANGEABLE TRIP INTERRUPTING RATING NEMA 14000 AMP AT 240 V.
 - ㉔ (1) 20 AMP CONTROL CIRCUIT-CIRCUIT BREAKER, 1 POLE, 120 VOLT, 100 AMP FRAME, NON-INTERCHANGEABLE TRIP INTERRUPTING RATING NEMA 14,000 AMP AT 120V
-
- Ⓐ CIRCUIT (RED) Ⓔ CIRCUIT (RED) ⒶⒶ CIRCUIT (ORANGE) ⒻⒻ CIRCUIT (ORANGE)
 - Ⓑ CIRCUIT (BLACK) Ⓕ CIRCUIT (BLACK) ⒸⒸ CIRCUIT (BLUE) ⒼⒼ CIRCUIT (BLUE)
 - Ⓒ CIRCUIT (BLACK) Ⓖ CIRCUIT (BLACK)
 - Ⓓ CIRCUIT (RED) Ⓗ CIRCUIT (RED)

GENERAL NOTES FOR CONTROL CABINET

1. ENTIRE CONTROL CABINET SHALL BE GROUNDED.
2. ALL WIRING SHALL BE TAGGED WITH SELF-STICKING WIRE MARKERS.
3. GROUND BUS TO BE COLOR CODED GREEN, NEUTRAL BUS WHITE, AND BONDED TO CABINET ENCLOSURE, BY LISTED PRESSURE CONNECTORS OR LISTED CLAMPS.
4. ALL INTERNAL CONTROLLER WIRING TO BE NO.12 AWG UNLESS OTHERWISE SPECIFIED.
5. CABINET WIRING INSULATION TO BE TYPE XHHW OR APPROVED EQUAL.
6. THE CONTRACTOR SHALL MAKE SPECIAL NOTE OF THE REQUIREMENTS FOR WIRE MARKERS AND SHALL TAG ALL WIRE ACCORDINGLY.
7. THE CONTROLLER SHALL BE UL LISTED, NEMA 3R, AND BE SUITABLE FOR USE AS SERVICE ENTRANCE RATED.

FILE NAME = 13277-DTLS-01 - DTLS-02

USER NAME =	DESIGNED -- PAP	REVISED --
	CHECKED -- DWS	REVISED --
PLOT SCALE =	DRAWN -- MED	REVISED --
PLOT DATE = 01-31-14	CHECKED -- AG	REVISED --

STATE OF ILLINOIS
DEPARTMENT OF TRANSPORTATION

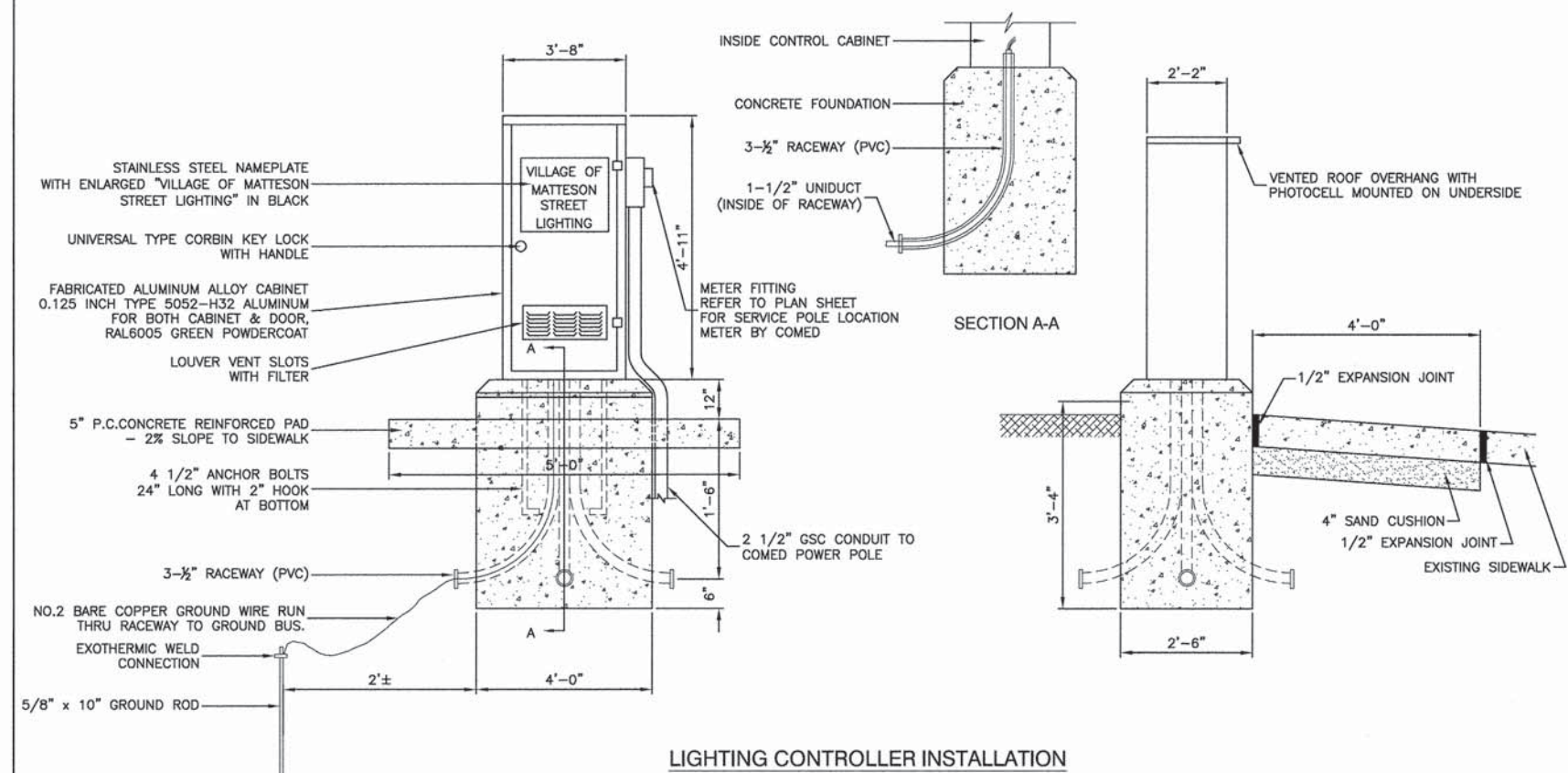
CICERO AVENUE
LINCOLN HIGHWAY TO VOLLMER ROAD
LIGHTING DETAILS

SCALE: NONE SHEET NO. 11 OF 13 SHEETS STA. TO STA.

F.A.P. RTE.	SECTION	COUNTY	TOTAL SHEETS	SHEET NO.
350	13-00062-00-LT	COOK	13	11
CONTRACT NO. 61A20				
FED. ROAD DIST. NO. 1	ILLINOIS	FED. AID PROJECT	M-4003(21B)	

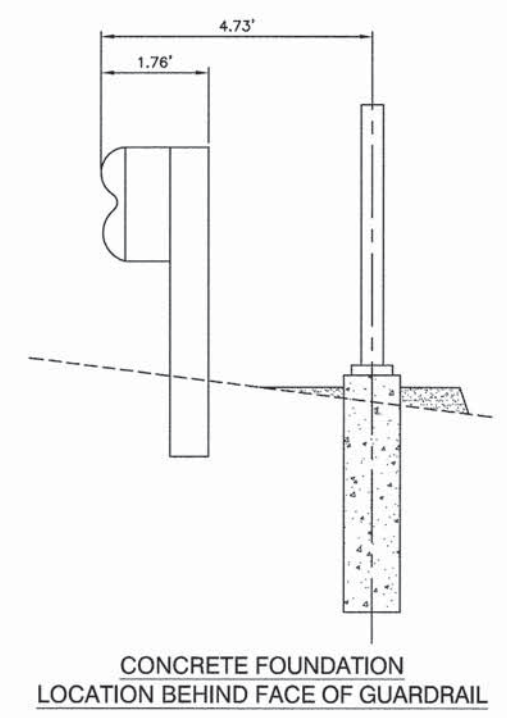
F.A.P. RTE.	SECTION	COUNTY	TOTAL SHEETS	SHEET NO.
350	13-00062-00-LT	COOK	13	12
STA. 102+00		TO STA. 184+00		
FED. ROAD DIST. NO.	ILLINOIS	FED. AID PROJECT	M-4003(21B)	

CONTRACT #61A20

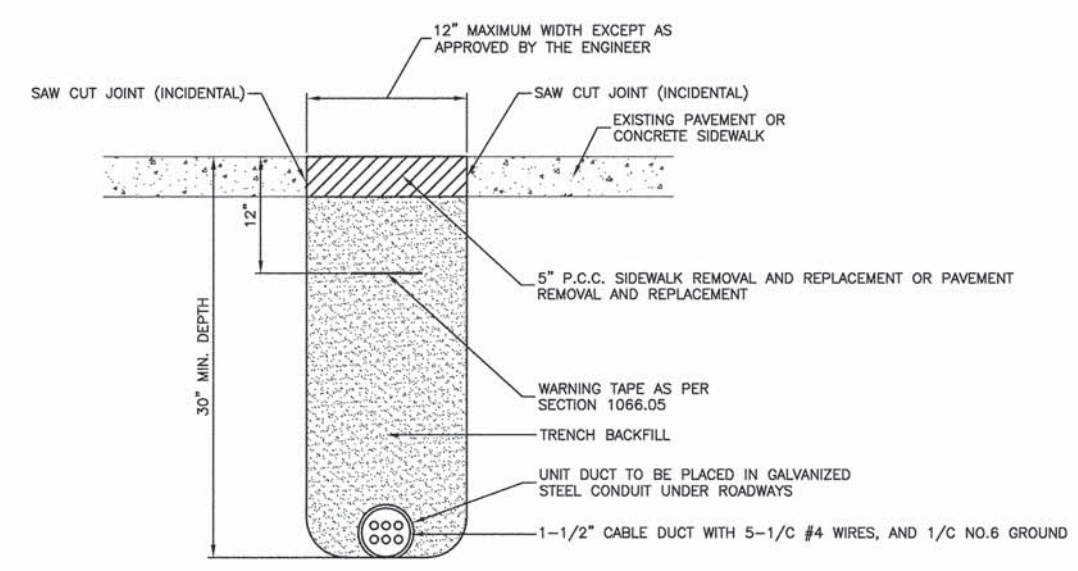


LIGHTING CONTROLLER INSTALLATION

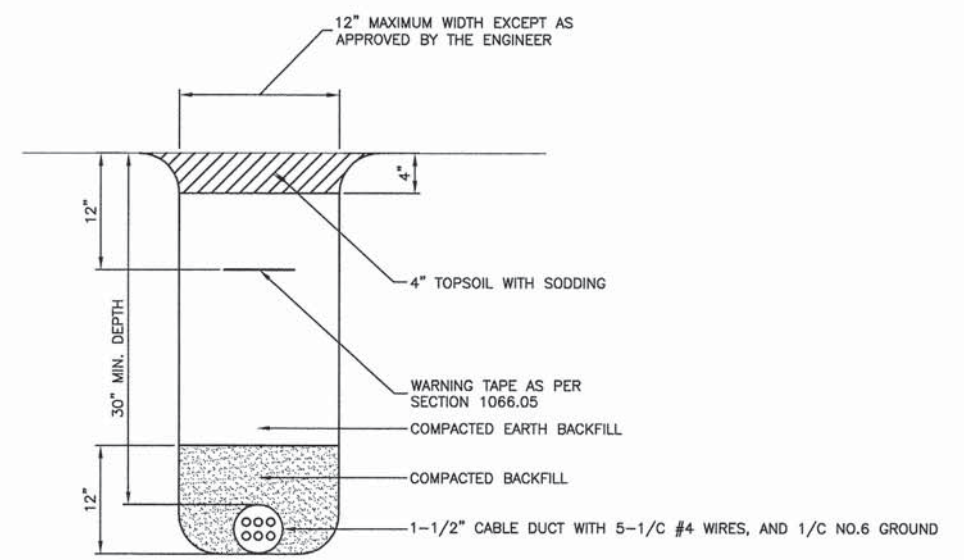
- NOTE:
1. ORIENT CABINET SO DOOR OPENS AWAY FROM TRAFFIC.
 2. METER FITTING TO BE LOCATED ON THE SIDE OF THE CABINET CLOSEST TO SERVICE POLE.
 3. ENCLOSURE SHALL BE RATED NEMA 3R



CONCRETE FOUNDATION LOCATION BEHIND FACE OF GUARDRAIL



TRENCH DETAIL FOR PAVED AREAS



TRENCH DETAIL FOR GRASS AREAS

FILE NAME = 13277-DTLS-01 - DTLS-04
USER NAME =
PLOT SCALE =
PLOT DATE = 01-31-14

DESIGNED -- PAP	REVISED --
CHECKED -- DWS	REVISED --
DRAWN -- MED	REVISED --
CHECKED -- AG	REVISED --

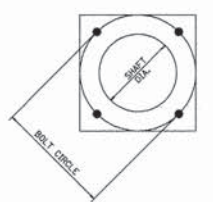
STATE OF ILLINOIS
DEPARTMENT OF TRANSPORTATION

CICERO AVENUE LINCOLN HIGHWAY TO VOLLMER ROAD LIGHTING DETAILS	
SCALE: NONE	SHEET NO. 12 OF 13 SHEETS
STA. TO STA.	

F.A.P. RTE.	SECTION	COUNTY	TOTAL SHEETS	SHEET NO.
350	13-00062-00-LT	COOK	13	12
CONTRACT NO. 61A20				
FED. ROAD DIST. NO.	ILLINOIS	FED. AID PROJECT	M-4003(21B)	

HELIX FOUNDATION SIZE

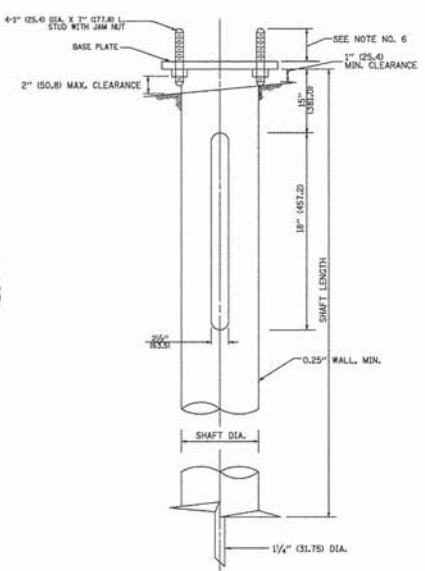
POLE MOUNTING HEIGHT	BOLT CIRCLE	SHAFT DIAMETER	SHAFT LENGTH	BASEPLATE
30 FT.	10 1/2"	8 1/2"	6 FT.	12"x12"x1"
33 FT.-35 FT.	10 1/2"	8 1/2"	6 FT.	12"x12"x1"
36 FT.-40 FT.	14.5"	8 1/2"	6 FT.	15"x15"x1 1/4"
41 FT.-45 FT.	15"	8 1/2"	6 FT.	15"x15"x1 1/4"
46 FT.-50 FT.	15"	10"	8 FT.	15"x15"x1 1/4"



METAL HELIX FOUNDATION MATERIALS

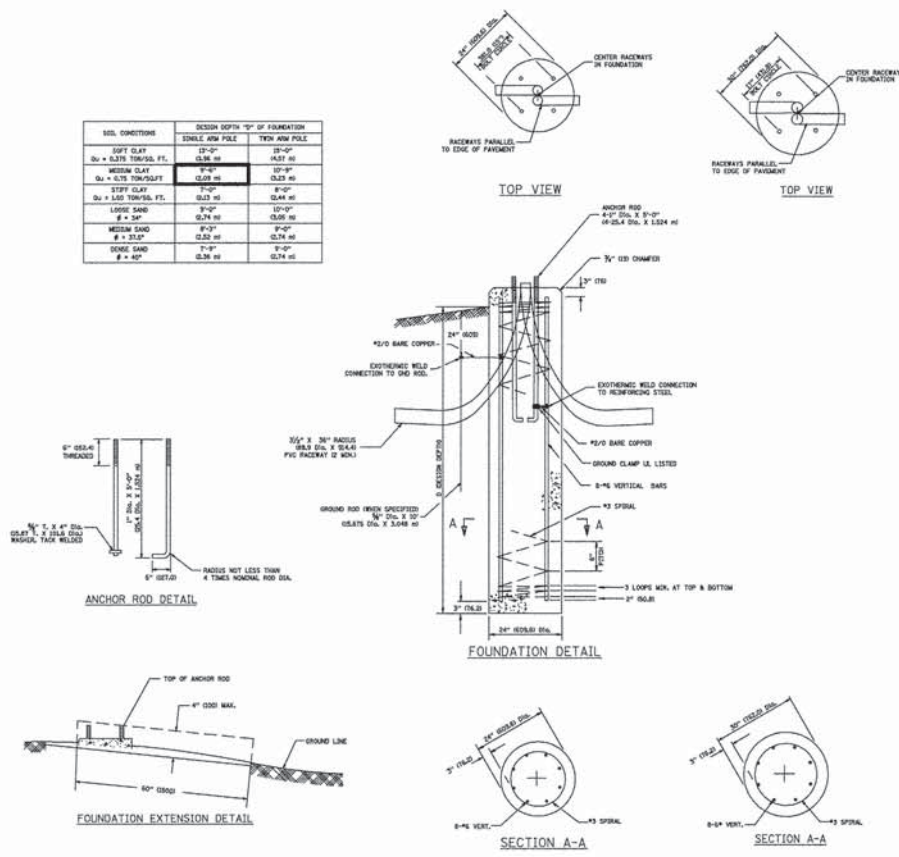
ITEM	MATERIAL REQUIREMENT
BASEPLATE	AASHTO M 270M, GRADE 36 (M270M, GRADE 250)
SHAFT	ASTM A 252, GRADE 2 (PHOSPHOROUS 0.04% MAXIMUM, SULFUR 0.005% MAXIMUM)
HELIX SCREW	AASHTO M 183 (ASTM A 635)
PILOT POINT	AASHTO M 270 (ASTM A 575)
ANCHOR RODS/STUDS	AASHTO M 314 (ASTM F 1554)
HEXAGON NUTS	AASHTO M 291M (ASTM A 563) GRADE 0H, OR AASHTO M 292 (ASTM A 194) GRADE 2H
WASHERS	AASHTO M 293 (ASTM F 436)

- NOTES:
- ALL DIMENSIONS IN INCHES UNLESS OTHERWISE SHOWN.
 - ALL MATERIAL SHALL BE GALVANIZED ACCORDING TO AASHTO M11, UNLESS OTHERWISE SPECIFIED.
 - ALL WELDS SHALL BE CONTINUOUS AND NOT LESS THAN 1/8" (3.2 mm) FILLET WELDS. THE WELDED FOUNDATION SHALL BE CAPABLE OF WITHSTANDING 15,000 FT/LBS (2033 kN) OF INSTALLATION TORQUE APPLIED ABOUT THE AXIS OF THE FOUNDATION.
 - THE HELIX FOUNDATION SHAFT SHALL BE INSTALLED VERTICAL AND THE BASE PLATE SHALL BE IN LEVEL. THE BREAKAWAY COUPLING AND WIRE CLIP SHALL NOT BE USED TO ALIGN THE POLE INSTALLATION.
 - THE CABLE TRENCH SHALL BE BACKFILLED AND FIRMLY COMPACTED BEFORE THE INSTALLATION OF THE LIGHT POLE.
 - THE CONTRACTOR SHALL COORDINATE EXTENSION OF ANCHOR BOLTS ABOVE TOP OF THE BASE PLATE WITH THE BREAKAWAY DEVICE MANUFACTURER'S REQUIREMENTS.
 - ANY VOIDS WITHIN THE METAL FOUNDATION SHALL BE FILLED WITH FINE AGGREGATE.
 - METAL FOUNDATIONS SHALL BE INSTALLED IN UNDISTURBED SOIL. PREDRILLING A PILOT HOLE AND/OR BACKFILLING AROUND THE FOUNDATION IS NOT ALLOWED.
 - THE METAL FOUNDATION SHALL NOT BE INSTALLED TO A TORQUE WHICH EXCEEDS THE MANUFACTURER'S MAXIMUM TORQUE RATING NOR SHALL IT BE INSTALLED TO AN INSTALLATION TORQUE VALUE OF LESS THAN 3,000 FT. LB. (4070 NM) UNLESS THE FOUNDATION IS NOT INSTALLED TO FULL INSTALLATION TORQUE OR DO NOT ACHIEVE THE MINIMUM INSTALLATION TORQUE SHALL BE REMOVED AND REPLACED WITH A CONCRETE FOUNDATION AT NO ADDITIONAL COST.
 - THE BASEPLATE SHALL BE PERPENDICULAR TO THE SHAFT AXIS (± 1°) AND THE HOLE CENTERLINE SHALL BE CONCENTRIC (± 0.08) TO THE SHAFT AXIS.
 - THE PILOT POINT AND SHAFT AXIS SHALL BE CONCENTRIC (± 0.25) AND IN LINE (± 2" L).
 - THE BASEPLATE SHALL BE STAMPED WITH THE MANUFACTURER'S NAME AND DATE OF MANUFACTURE.

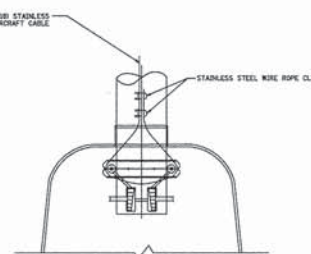
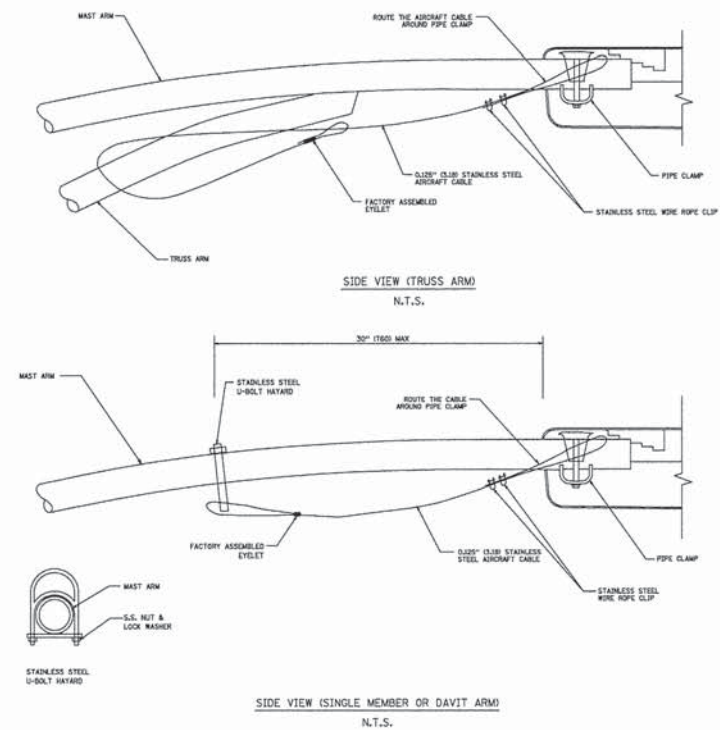


SOIL CONDITIONS

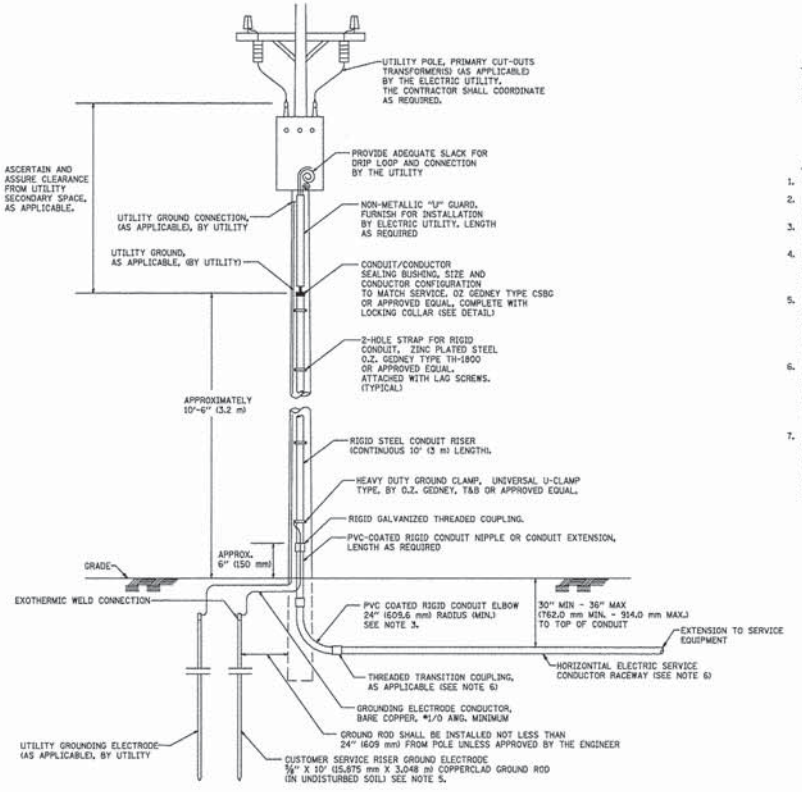
SOIL CONDITIONS	DESIGN DEPTH "OF FOUNDATION	SINGLE ROW POLE	TWIN ROW POLE
STIFF CLAY D _u = 0.375 TONS/SQ. FT.	12'-0"	0.35 MI	0.35 MI
MEDIUM CLAY D _u = 0.375 TONS/SQ. FT.	12'-0"	0.35 MI	0.35 MI
STIFF CLAY D _u = 1.125 TONS/SQ. FT.	12'-0"	0.35 MI	0.35 MI
MEDIUM CLAY D _u = 1.125 TONS/SQ. FT.	12'-0"	0.35 MI	0.35 MI
LOOSE SAND F = 1.50"	12'-0"	0.28 MI	0.28 MI
MEDIUM SAND F = 2.25"	12'-0"	0.28 MI	0.28 MI
TIGHT SAND F = 4.00"	12'-0"	0.28 MI	0.28 MI



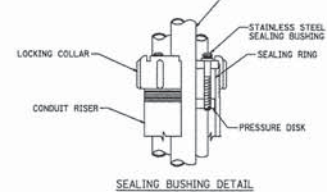
- NOTES:
- ALL DIMENSIONS ARE IN INCHES UNLESS OTHERWISE SHOWN.
 - THE ANCHOR RODS AND BASEPLATE SHALL BE PROPERLY SECCED IN PLACE BEFORE THE CONCRETE IS PLACED.
 - THE FOUNDATION SHALL NOT PROTRUDE MORE THAN 1/8" (3.2 mm) ABOVE THE FINISHED GRADE WITHIN A 60 IN. (1524 mm) CIRCLE AROUND THE FOUNDATION WITH ANCHOR RODS INCLUDED. IN ACCORDANCE WITH AASHTO M270, IF THE FOUNDATION WEIGHT, INCLUDING ANCHOR RODS, EXCEEDS THEIR SPECIFIED LIMITS, THE FOUNDATION SHALL BE REINFORCED AT THE CONTRACTOR'S EXPENSE. SEE FOUNDATION EXTENSION DETAIL.
 - THE HOLE FOR THE FOUNDATION SHALL BE MADE BY DRILLING WITH AN ANCHOR OF THE SHAKE DIAMETER AS THE FOUNDATION. IF SOIL CONDITIONS REQUIRE THE USE OF A LINER TO FORM THE HOLE, THE LINER SHALL BE REMOVED AS THE CONCRETE IS DEPOSITED.
 - THE TOP OF THE FOUNDATION SHALL BE CONSTRUCTED LEVEL. A LINE OR FORM SHALL BE USED TO PROVIDE A UNIFORM SURFACE SIDE TO THE TOP OF THE FOUNDATION. FOUNDATION TOP SHALL BE CHAMFERED 3/16" (1.6 mm).
 - THE CONCRETE SHALL BE CLASS 85. CONCRETE SHALL CURE ACCORDING TO ARTS 150.03.01 THROUGH 150.03.04.
 - THE ANCHOR ROD SHALL BE A 1/2" (12.7 mm) DIA. 1/2" (12.7 mm) DIA. ANCHOR ROD WILL NOT BE ALLOWED. THE RADIUS OF THE ANCHOR ROD SHALL NOT BE LESS THAN 4 TIMES THE NOMINAL DIAMETER OF THE ANCHOR ROD. A TACK WELDED ANCHOR ROD MAY BE SUBSTITUTED WITH THE APPROVAL OF THE ENGINEER.
 - THE ANCHOR RODS SHALL BE ACCORDING TO ASTM A36. THE ANCHOR RODS SHALL BE GALVANIZED ACCORDING TO ASTM F 436.
 - ANCHOR RODS, NUTS AND WASHERS SHALL BE COMPLETELY GALVANIZED BY EITHER THE HOT-DIPPED PROCESS CONFORMING WITH AASHTO M 252, THE MECHANICAL PLATING METHOD CONFORMING TO AASHTO M 254, OR WITH A NONMETALlic COATING. THE MECHANICAL PLATING METHOD CONFORMING TO AASHTO M 254 SHALL BE USED WITH A NONMETALlic COATING. THE MECHANICAL PLATING METHOD CONFORMING TO AASHTO M 254 SHALL BE USED WITH A NONMETALlic COATING.
 - THE ANCHOR RODS SHALL BE THREADED A MINIMUM OF 8 INCHES (203 mm) WITH A MINIMUM OF 3 INCHES (76 mm) OF THREADED ANCHOR ROD EXPOSED IN THE FOUNDATION.
 - ANCHOR RODS SHALL PROJECT 2" (51 mm) ABOVE THE TOP OF THE FOUNDATION. IF BREAKAWAY COUPLERS ARE SPECIFIED, THE CONTRACTOR SHALL CAREFULLY COORDINATE THE ANCHOR ROD PROJECTION WITH THE INSTALLATION REQUIREMENTS OF THE BREAKAWAY COUPLER.
 - THE CONTRACTOR SHALL USE A #3 SPIRAL AT 6" (152 mm) PITCH OR MAY SUBSTITUTE #3 TIES AT 12" (305 mm) O.C. WITH THE APPROVAL OF THE ENGINEER.
 - THE CABLE TRENCH AND FOUNDATION SHALL BE BACK FILLED AND COMPACTED AS SPECIFIED BEFORE THE LIGHT POLE IS SET.
 - THE BASEPLATE SHALL PROJECT 1" (25 mm) ABOVE THE TOP OF THE FOUNDATION.



- NOTES:
- ALL DIMENSIONS ARE IN MILLIMETERS UNLESS OTHERWISE SHOWN.
 - CONTRACTOR SHALL ADJUST THE WIRE CLIP TO ELIMINATE ANY SLACK FROM THE WIRE ROPE.
 - THE 0.025" (0.635 mm) STAINLESS STEEL AIRCRAFT CABLE SHALL REMAIN VISIBLE FROM THE GROUND LEVEL.
 - THE BREAKING STRENGTH OF THE CABLE SHALL BE 1700 LBS. MIN.



- APPLICATION
- THIS DETAIL APPLIES FOR LOW VOLTAGE ELECTRIC SERVICE (480 V OR LESS) FROM AN OVERHEAD UTILITY SUPPLY TO SEPARATELY-MOUNTED SERVICE EQUIPMENT.
- NOTES:
- SERVICE VOLTAGE SHALL BE AS INDICATED ELSEWHERE IN THE DRAWINGS.
 - UNLESS OTHERWISE INDICATED, ITEMS AND WORK SHALL BE INCLUDED AND PAID AS PART OF THE ELECTRIC UTILITY SERVICE INSTALLATION PAY ITEM.
 - CONDUIT AND CONNECTOR DIAMETER SHALL MATCH THE DIAMETER OF THE SERVICE CONDUCTOR RACEWAY AS INDICATED ON THE PLANS.
 - PVC COATED RACEWAYS AND ACCESSORIES SHALL BE CAREFULLY INSTALLED WITH MFR RECOMMENDED TOOLS AND PROCEDURES TO AVOID DAMAGE. ANY DAMAGE SHALL BE REPAIRED WITH COMPATIBLE PVC TOUCH-UP MATERIAL TO THE SATISFACTION OF THE ENGINEER OR THE DAMAGED MATERIAL SHALL BE REPLACED AT NO ADDITIONAL COST.
 - THE CONTRACTOR SHALL OBTAIN INSPECTION AND APPROVAL BY THE ENGINEER OF SERVICE RISER GROUND ELECTRODE, RISER ELBOW, NIPPLE AND CONNECTION TO SERVICE CONDUCTOR RACEWAY EXTENSION BEFORE BACKFILL AND SHALL ALSO OBTAIN INSPECTION OF SERVICE RISER AND SEALING BUSHING BEFORE UTILITY "U" GUARD INSTALLATION AND SERVICE CONNECTION.
 - THE HORIZONTAL ELECTRIC SERVICE CONDUCTOR RACEWAY SHALL BE AS INDICATED AND SHALL BE MEASURED SEPARATELY FOR PAYMENT. WHEN THE RACEWAY IS PVC-COATED RIGID GALVANIZED STEEL, THE COUPLING SHALL BE THE SAME. WHEN THE RACEWAY IS PVC CONDUIT OR CONCRETE, THE COUPLING SHALL BE A METALlic TO NON METALlic ADAPTER. WHEN THE RACEWAY IS ENCASED IN CONCRETE, THE CONCRETE SHALL EXTEND TO COVER THE COUPLING.
 - PLANS AND DETAILS INDICATE THE GENERAL NATURE AND REQUIREMENTS. THEY DO NOT SHOW EVERY ACCESSORY AND ATTACHMENT, AND THEY DO NOT RELIEVE THE CONTRACTOR OF THE REQUIREMENTS AND SPECIAL PROVISIONS TO ASCERTAIN UTILITY REQUIREMENTS AND TO COORDINATE ACCORDINGLY, FURNISHING ALL ITEMS AND WORK NOT PROVIDED BY THE UTILITY, BUT NECESSARY FOR A COMPLETE SERVICE INSTALLATION IS REQUIRED AND SHALL BE INCLUDED IN THE ELECTRIC UTILITY SERVICE INSTALLATION PAY ITEM.



USER NAME =	DESIGNED -- PAP	REVISED --
CHECKED -- DWS	REVISED --	
PLOT SCALE =	DRAWN -- MED	REVISED --
PLOT DATE = 01-31-14	CHECKED -- AG	REVISED --