

F.A.P. RTE.	SECTION	COUNTY	TOTAL SHEETS	SHEET NO.
IL 2	D2 BRIDGE PAINTING 2014-	LEE / OGLE	25	1
		ILLINOIS	CONTRACT NO. 64J52	

STATE OF ILLINOIS
DEPARTMENT OF TRANSPORTATION
DIVISION OF HIGHWAYS

PROPOSED HIGHWAY PLANS

FAP 742 ROUTE IL 2
SECTION D2 BRIDGE PAINTING 2014-1

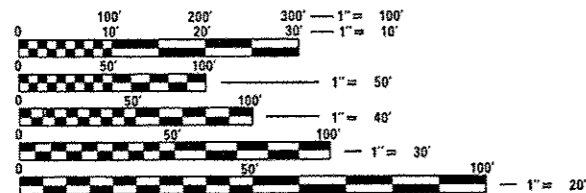
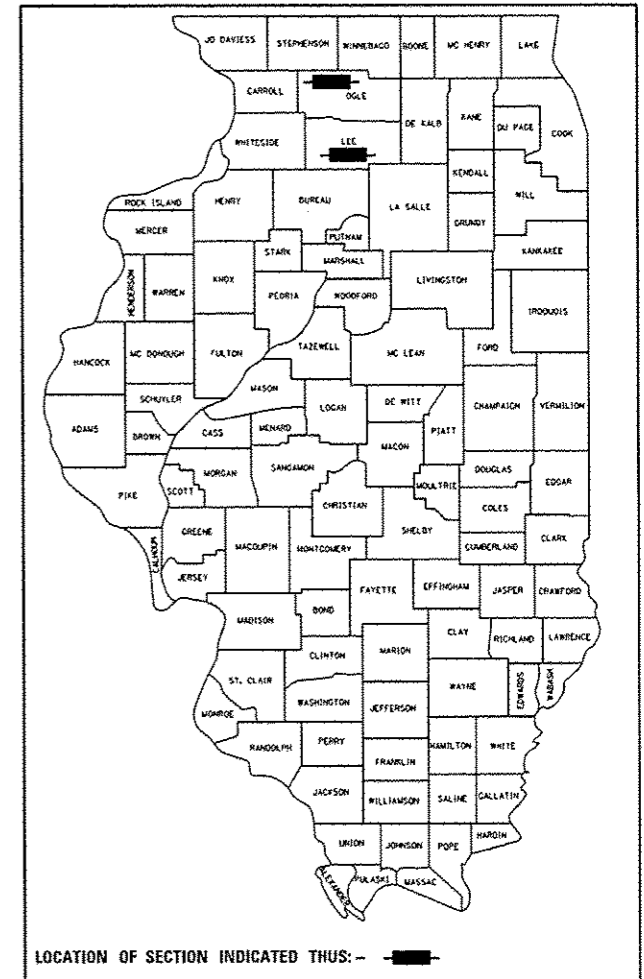
TYPE of IMPROVEMENT
PARTIAL CLEANING AND PAINTING
ON SN: 052-0063 AND SN: 071-0025
LEE / OGLE

C-92-074-13

R-10-E

FOR INDEX OF SHEETS, SEE SHEET NO. 2

D-92-032-13



FULL SIZE PLANS HAVE BEEN PREPARED USING STANDARD ENGINEERING SCALES. REDUCED SIZED PLANS WILL NOT CONFORM TO STANDARD SCALES. IN MAKING MEASUREMENTS ON REDUCED PLANS, THE ABOVE SCALES MAY BE USED.

J.U.L.I.E.
JOINT UTILITY LOCATION INFORMATION FOR EXCAVATION
1-800-892-0123
OR 811

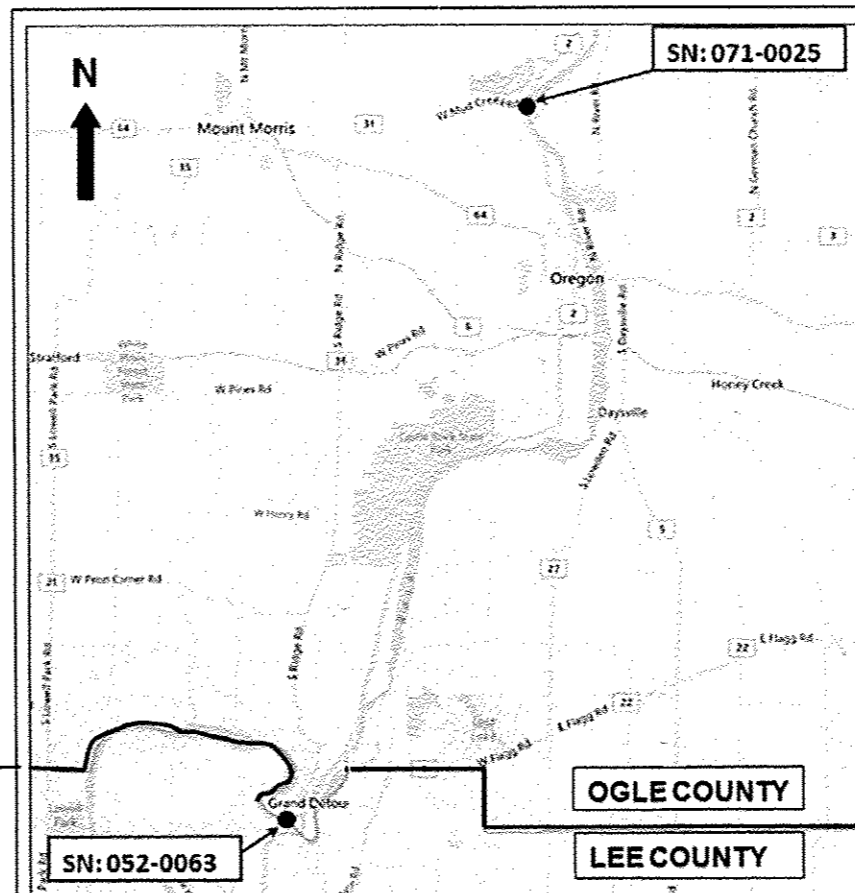
PROJECT ENGINEER:
MAHMOUD ETEMADI (815)-284-5393

DIXON TOWNSHIP, SECTION 13, 14
ROCKVALE TOWNSHIP, SECTION 28

CONTRACT NO. 64J52

T-24-N

T-22-N



OGLE COUNTY

LEE COUNTY

R-9-E

STATE OF ILLINOIS
DEPARTMENT OF TRANSPORTATION
DIVISION OF HIGHWAYS

SUBMITTED *Jan. 22nd 2014*
Paul C. [Signature]
DEPUTY DIRECTOR OF HIGHWAYS, REGION ENGINEER

March 21, 2014
John D. Baranzelli, P.E., [Signature]
ENGINEER OF DESIGN AND ENVIRONMENT

March 21, 2014
Amer Osman, P.E., [Signature]
DIRECTOR OF HIGHWAYS, CHIEF ENGINEER

PRINTED BY THE AUTHORITY
OF THE STATE OF ILLINOIS