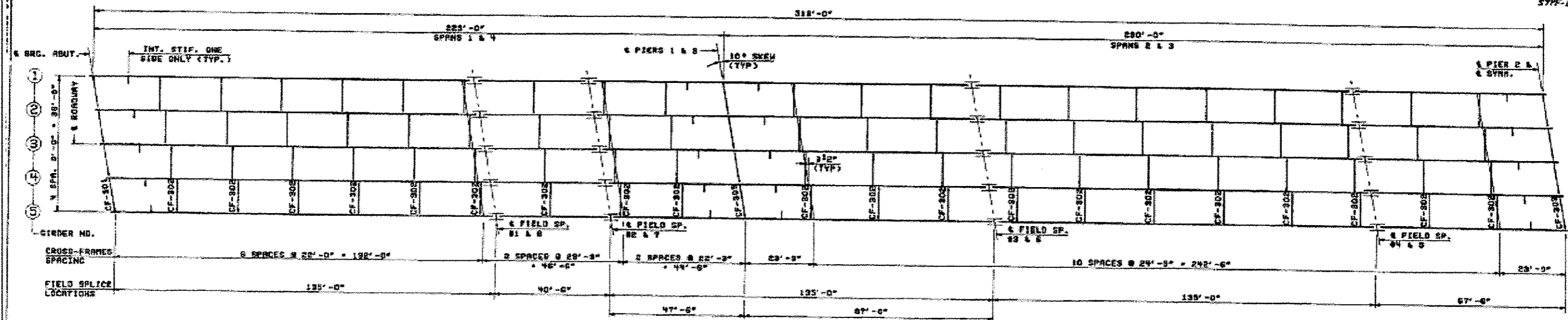


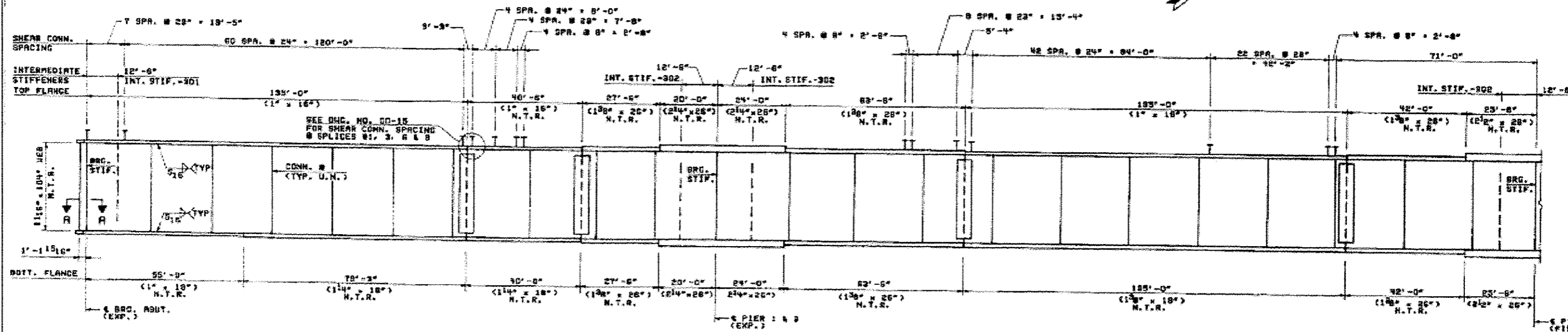
FOR INFORMATION ONLY

SHEET NO. 10 OF 50

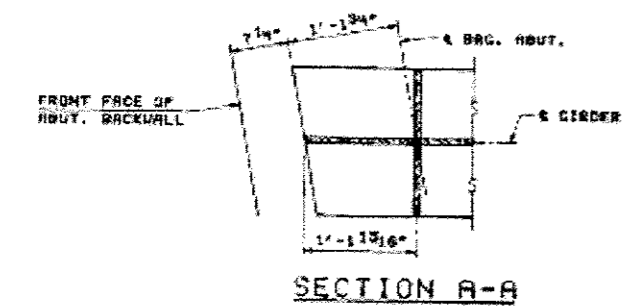
ROUTE NO.	SECT.	COUNTY	SHEET NO.	TOTAL SHEETS
P.A. 742	4	LEE & OGLE	86	34
FIG. 4000 DIST. NO. 7	ELLENBURG	FED. HIGH PROJECT	STP-BRF-742(65)	



HALF FRAMING PLAN



HALF ELEVATION



- NOTES:**
- FOR GENERAL NOTES SEE DWG. NO. CD-02.
 - ALL DIMENSIONS ARE GIVEN HORIZONTALLY & VERTICALLY AND SHALL BE ADJUSTED FOR VERTICAL PROFILE, CROSS SLOPES & CAMBERS.
 - ALL STRUCTURAL STEEL FOR FLANGES & WEBS OF MAIN GIRDERS, BEARING STIFFENERS & INTERMEDIATE STIFFENERS SHALL BE A36 TO A570 (GRADE 50).
 - N.T.R. DESIGNATES MEMBERS SUBJECT TO THE SUPPLEMENTAL REQUIREMENTS FOR NOTCH TOUGHNESS (ZONE 2).
 - FOR ADDITIONAL DETAILS SEE DWG. NOS. CD-19 THRU CD-17.

STATE OF ILLINOIS
DEPARTMENT OF TRANSPORTATION

GIRDER FRAMING PLAN & ELEVATION

GRAND DETOUR BRIDGE
OVER ROCK RIVER
F.A. RTE. 742 SECTION 39RB-1
STA. 1228+96 LEE & OGLE COUNTIES
STRUCTURE NUMBER D52-0063

STEINBAK ROYNTON INC.
CONSULTING ENGINEERS - CHICAGO, ILLINOIS

DRAWING NO.	SCALE	DATE	SHEET NO.
GD-12	N.T.S.	4-15-93	34

REVISION	DATE	DESCRIPTION

DESIGNED -	REVISED -	STATE OF ILLINOIS DEPARTMENT OF TRANSPORTATION	EXISTING BRIDGE PLANS SN: 052-0063	F.A.P. RTE.	SECTION	COUNTY	TOTAL SHEETS	SHEET NO.
DRAWN -	REVISED -			IL 2 D2 BRIDGE PAINTING 2014-	LEE / OGLE	25	13	
CHECKED -	REVISED -							CONTRACT NO. 64J52
DATE -	REVISED -							ILLINOIS