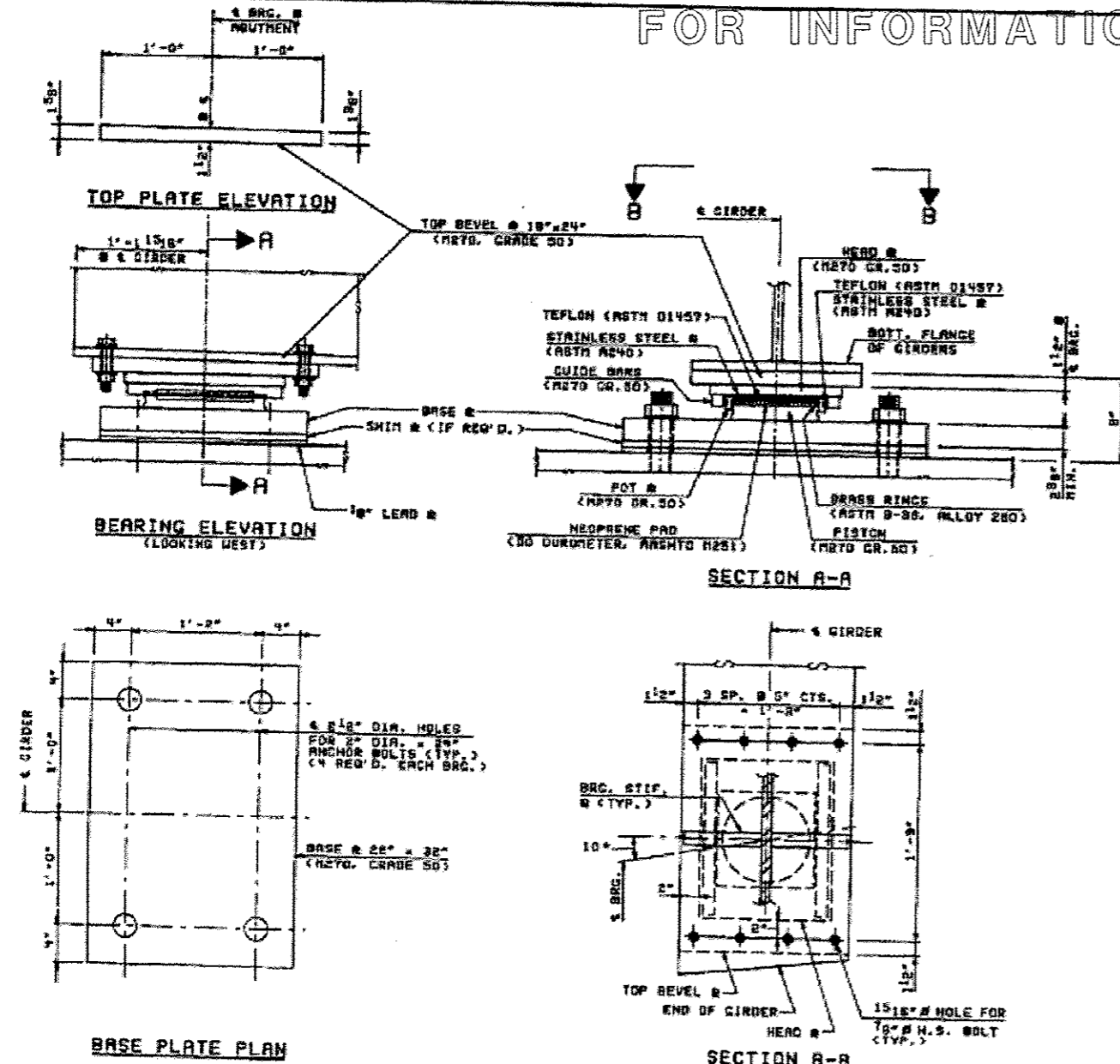
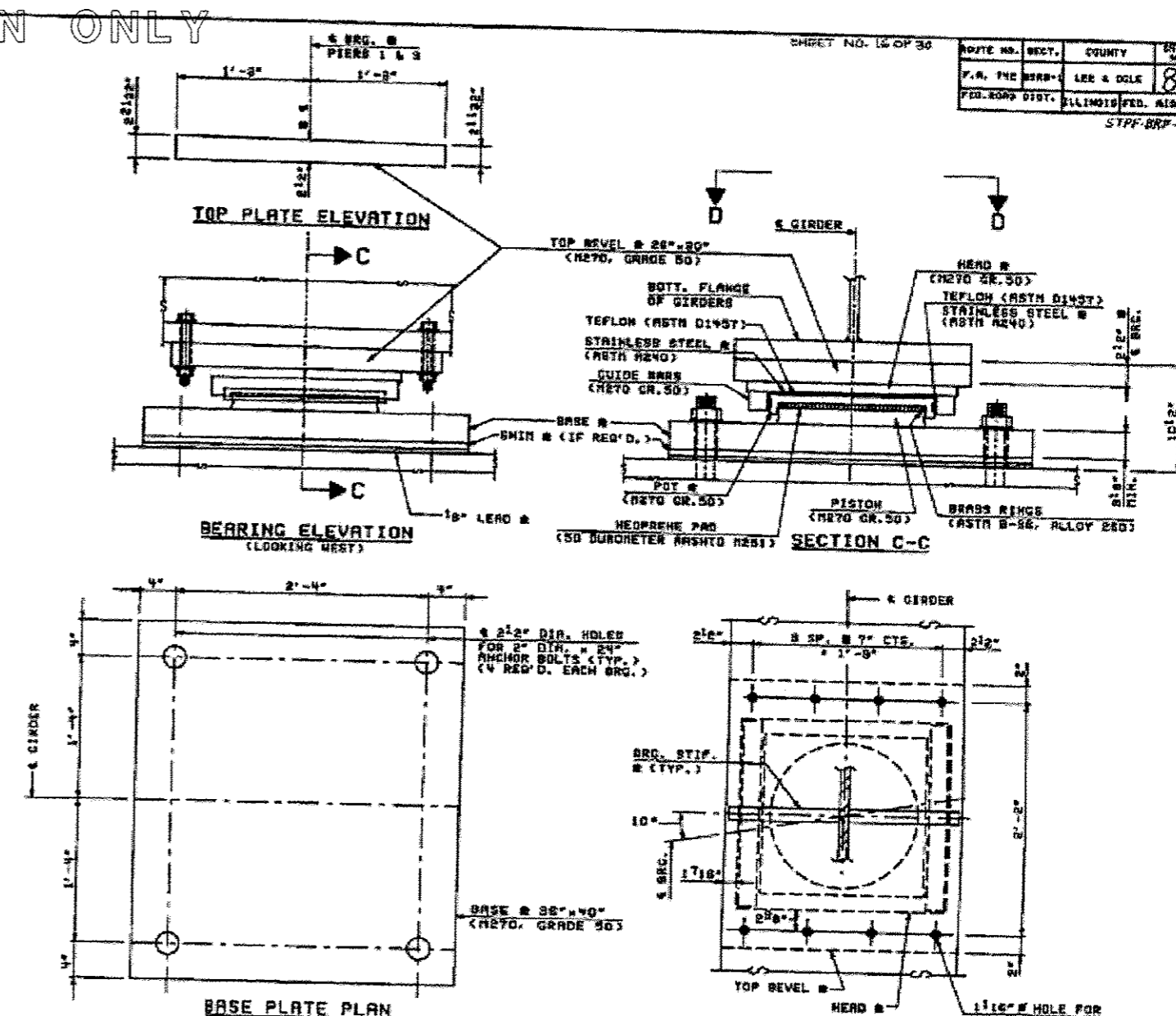


SHEET NO. 12 OF 30		ROUTE NO.	SECT.	COUNTY	SHEET NO.	TOTAL SHEETS
		F.A. P.C. 398B-1	LEE & OGLE	ILLINOIS	86	90
		ILLINOIS FED. AID PROJECT				
		STPF-BRP-742(25)				



**FLOATING BEARINGS - GUIDED EXPANSION @ ABUTMENTS**  
 (FOR ALL GIRDERS - 2-2-10 REQUIRED)  
 (S. ABUTMENT SHOWN, SCHLAK AT N. ABUTMENT)



**FLOATING BEARINGS - GUIDED EXPANSION @ PIERS 1 & 3**  
 (FOR ALL GIRDERS - 2-2-10 REQUIRED)

**BEARING DATA**  
N. ABUT. & S. ABUT.

MIN. DEAD LOADS	• 114 KIPS
MAX. DEAD LOADS	• 133 KIPS
LIVE LOAD + IMP	• 99 KIPS
TOTAL - MAXIMUM	• 230 KIPS

TRANSVERSE LOADS-(MAX.)	
WIND	• 14 KIPS
OR EARTHQUAKE	• 27 KIPS

NOTATION  
 MOVEMENT-(LONGITUDINAL) • 0.02 RADIAN  
 MOVEMENT-(TRANSVERSE) • 0.25 INCHES

**BEARING DATA**  
PIERS 1 & 3

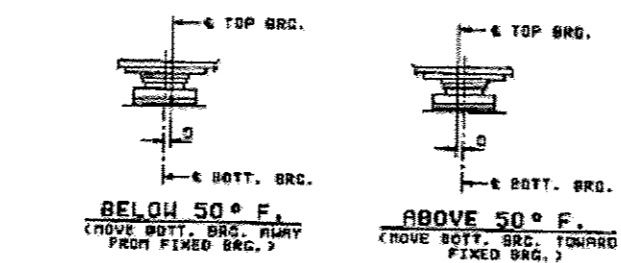
MIN. DEAD LOADS	• 485 KIPS
MAX. DEAD LOADS	• 505 KIPS
LIVE LOAD + IMP	• 220 KIPS
TOTAL - MAXIMUM	• 725 KIPS

TRANSVERSE LOADS-(MAX.)	
WIND	• 32 KIPS
OR EARTHQUAKE	• 101 KIPS

NOTATION  
 MOVEMENT-(LONGITUDINAL) • 0.02 RADIAN  
 MOVEMENT-(TRANSVERSE) • 0.25 INCHES



**SETTING ANCHOR BOLTS AT EXP. BRG.**  
 D = 1/8" PER EACH 100' OF EXPANSION FOR EVERY 15° TEMP. CHANGE FROM THE NORMAL TEMP. OF 30° F.

- NOTES:**
1. ALL DETAILED DESIGN COMPUTATIONS, DRAWINGS & INSTALLATION PROCEDURES SHALL BE SUBMITTED TO THE ENGINEER FOR APPROVAL PRIOR TO FABRICATION.
  2. SEE DWG. NO. CD-25 FOR ANCHOR BOLT DETAILS.
  3. CONTRACTOR IS RESPONSIBLE FOR ADJUSTING DIMENSIONS AS REQUIRED IN THE FIELD FOR THE ACTUAL BEARINGS USED (INCLUDING BEAT ELEVATIONS). DIMENSIONS TO BE ADJUSTED SHALL BE SUBMITTED TO THE ENGINEER FOR APPROVAL PRIOR TO FABRICATION OF BEARINGS.
  4. BEARING DIMENSIONS SUCH AS DIAMETER OF BRASS RINGS, PISTON, POT PLATE, HEAD PLATE, GUIDE BARS, NEOPRENE PAD, TEFLON, STAINLESS STEEL PLATE, ETC. SHALL BE AS PER MANUFACTURER FOR GIVEN BEARING DESIGN DATA.

**BILL OF MATERIAL**

ITEM	UNIT	LEE COUNTY		OGLE COUNTY		TOTAL
		N. ABUT.	S. ABUT.	N. ABUT.	S. ABUT.	
FLOATING BEARINGS, GUIDED EXPANSION (750 KIPS)	EACH	3	5	3	5	10
FLOATING BEARINGS, GUIDED EXPANSION (230 KIPS)	EACH	3	3	3	3	10

REVISION	DATE	DESCRIPTION
STATE OF ILLINOIS DEPARTMENT OF TRANSPORTATION		
FLOATING BEARING DETAILS		
GRAND DETOUR BRIDGE OVER ROCK RIVER F.A. RTE. 742 SECTION 398B-1		
STRUCTURE NUMBER 052-0063		
STEINMAN DYNATOR INC. CONSULTING ENGINEERS - CHICAGO, ILLINOIS		
DRAWING NO. GD-18	SCALE N.T.S.	DATE 4-19-92
		SHEET NO. 12

CHECKED BY: SBR  
 DRAFTED BY: RJR  
 EXTENDED BY: KRP  
 CHECKED BY: RJP  
 DRAFTED BY: RJP

DESIGNED -	REVISION -
DRAWN -	REVISION -
CHECKED -	REVISION -
DATE -	REVISION -

STATE OF ILLINOIS  
DEPARTMENT OF TRANSPORTATION

EXISTING BRIDGE PLANS  
SN: 052-0063

F.A.P. RTE.	SECTION	COUNTY	TOTAL SHEETS	SHEET NO.
IL 2 D2 BRIDGE PAINTING 2014-	LEE / OGLE	25	18	
CONTRACT NO. 64J52				