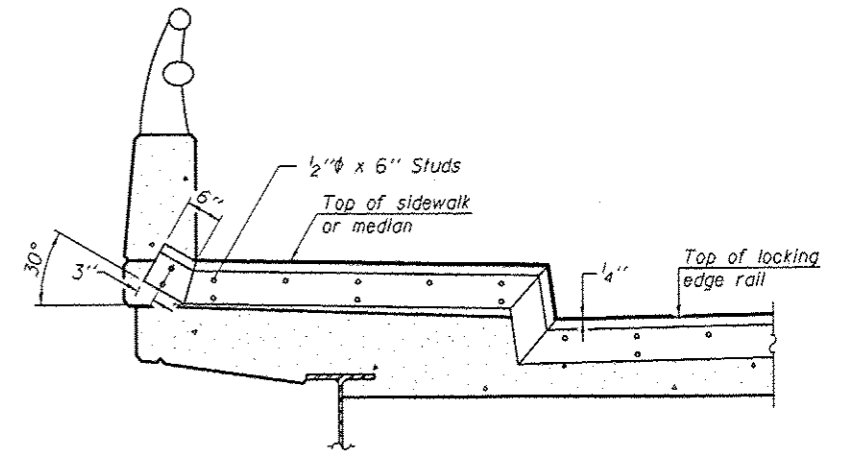
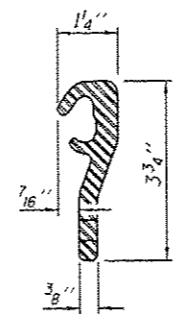


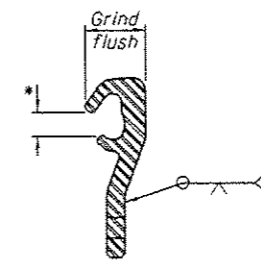
SECTION THRU SHALLOW STRIP SEAL JOINT



TYPICAL END TREATMENT AT SIDEWALK OR MEDIAN



ROLLED (EXTRUDED) RAIL



LOCKING EDGE RAIL SPLICE

* Omit weld at seal opening.

Notes:

The strip seal shall be made continuous and shall have a minimum thickness of 1/4". The configuration of the strip seal shall match the configuration of the Locking Edge Rails.

The height and thickness of the Locking Edge Rails shown are minimum dimensions. The actual configuration of the Locking Edge Rails and matching strip seal may vary from manufacturer to manufacturer. Flanged edge rails will not be allowed.

The inside of the Locking Edge Rail groove shall be free of weld residue. Locking Edge Rails may be spliced at slope discontinuities and stage construction joints.

The manufacturer's recommended installation methods shall be followed. All steel components shall be galvanized after fabrication according to Article 520.03 of the Standard Specifications.

Maximum space between rail segments at stage lines shall be 3/16", sealed with a suitable sealant

BILL OF MATERIAL

Item	Unit	Total
Preformed Joint Strip Seal	Foot	85

DESIGNED - TLC	EXAMINED	DATE - APRIL 23, 2014
CHECKED - SMR	<i>Timothy A. Anhalt</i> ACTING ENGINEER OF STRUCTURAL SERVICES	
DRAWN - Kyle M. Staffen	PASSED	
CHECKED - TLC SMR	<i>Carl King</i> ACTING ENGINEER OF BRIDGES AND STRUCTURES	

**STATE OF ILLINOIS
DEPARTMENT OF TRANSPORTATION**

**PREFORMED JOINT STRIP SEAL
SN 098-0052**

F.A.U. RTE.	SECTION	COUNTY	TOTAL SHEETS	SHEET NO.
5571	02 BRIDGE REPAIRS 2014-2	WHITESIDE	33	20
CONTRACT NO. 64J92			ILLINOIS FED. AID PROJECT	

SHEET NO. 3 OF 4 SHEETS