

ROUTE NO.	SECTION	COUNTY	TOTAL SHEETS	SHEET NO.
F.A.U. 5571	BD	WHITESIDE	63	15
FED. RD. DIST. NO. 7	ILLINOIS	FED. AID PROJECT		

SHEET NO. 1
44 SHEETS

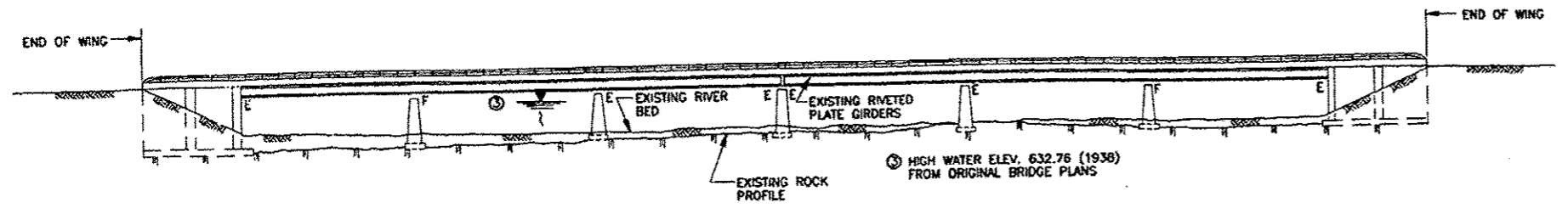
B.M. - CHISELED "C" ON LOWEST STEP OF SOUTHEAST WINGWALL
22' LEFT, STATION 20+30±, ELEVATION 644.97

EXISTING STRUCTURE : STRUCTURE NUMBER 098-0051, CONSTRUCTED IN 1951 UNDER SENATE BILL #417, SECTION B-F.
SUPERSTRUCTURE : REINF. CONC. DECK ON RIVETED STEEL PLATE GIRDERS
SUBSTRUCTURE : VAULTED ABUTMENTS, SOLID PIERS
DECK TO BE REMOVED AND STRUCTURE WIDENED. TRAFFIC TO BE MAINTAINED UTILIZING STAGE CONSTRUCTION.

NO SALVAGE :

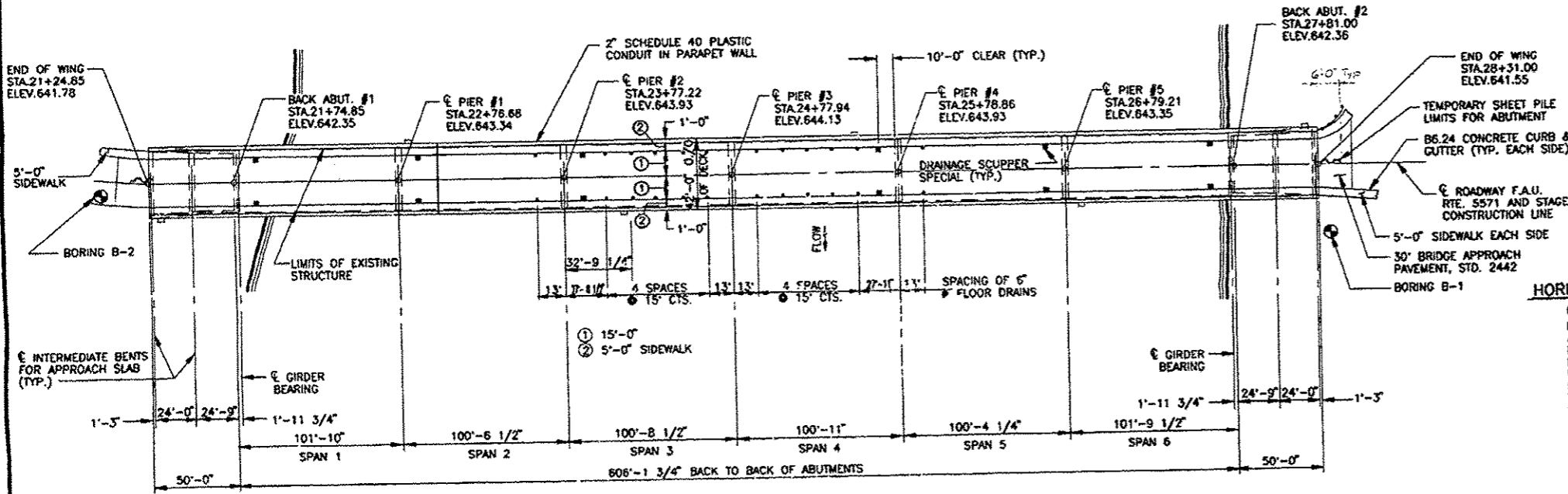
098-0051
&
098-0052
reh

STATION 24+78
REBUILT 199... BY
STATE OF ILLINOIS
F A RTE. 5571 SEC. BD
F A PROJ. 5062 (D14)
LOADING HS 20
STR. NO. 098-0051



ELEVATION

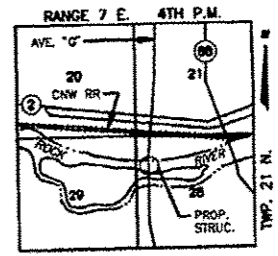
NOTES:
EXISTING NAME PLATE TO BE CLEANED AND RELOCATED NEXT TO NEW NAME PLATE ON THE NEW PARAPET, COST INCIDENTAL TO "NAME PLATE".
FOR MATERIALS AND DETAIL DIMENSIONS OF NAME PLATES, SEE STANDARD SHEET 2113.



PLAN

HORIZ. CURVE DATA
(FIELD CURVE)

P.I. STA.	21+13.06
A	755'30"
D	700'00"
R	818.51'
L	113.21'
T	56.70'
S.E.	NONE

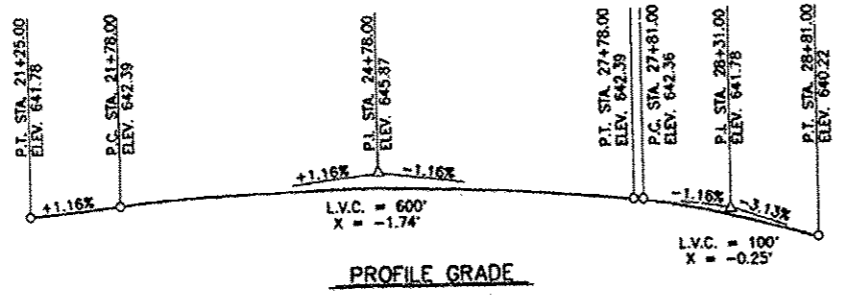


LOCATION SKETCH

DESIGN SPECIFICATIONS
1989 AASHTO SPECIFICATIONS AND 1990-1991 INTERIMS

DESIGN LOADING HS20-44
ALLOW 25#/SQ.FT. FOR FUTURE WEARING SURFACE

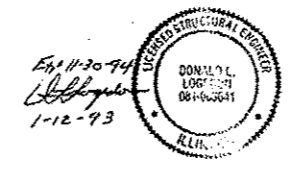
DESIGN STRESSES
f_c = 3900 psi
f_y = 60,000 psi (REINF.)
f_a = 18,000 psi (EXISTING PLATE GIRDERS)



PROFILE GRADE

APPROVED
FOR STRUCTURAL ADEQUACY ONLY

Ralph E. Anderson
Engineer of Bridges and Structures



GENERAL PLAN
AVENUE "G" OVER NORTH
CHANNEL OF THE ROCK RIVER
F.A.U. RTE. 5571 SECTION BD
WHITESIDE COUNTY
STRUCTURE NO. 098-0051
STATION 24+77.94