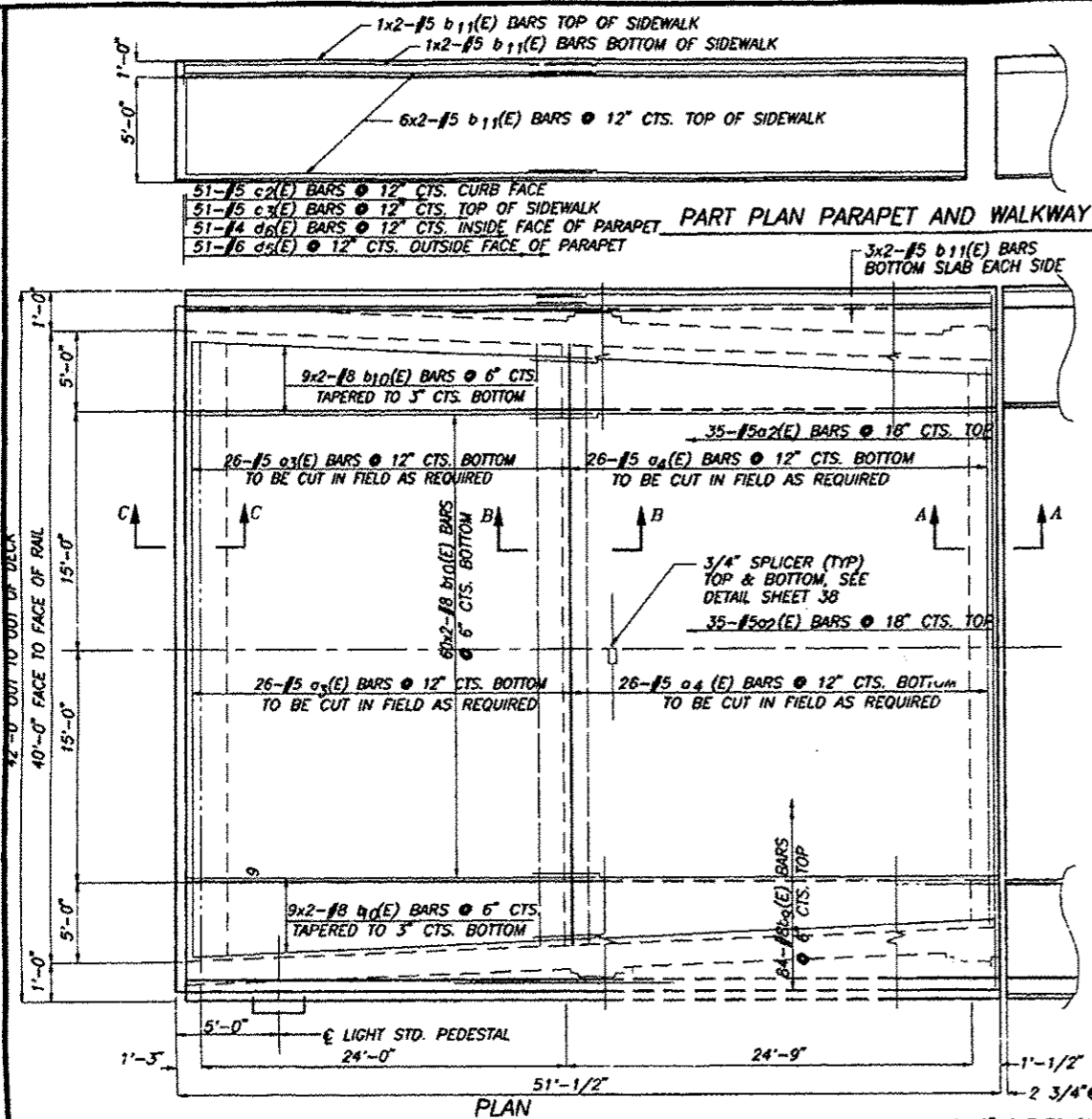
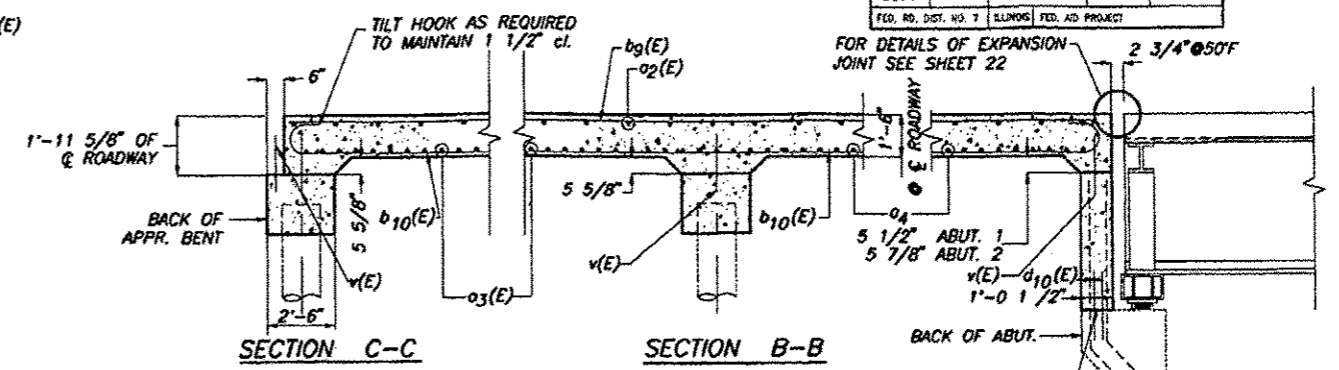


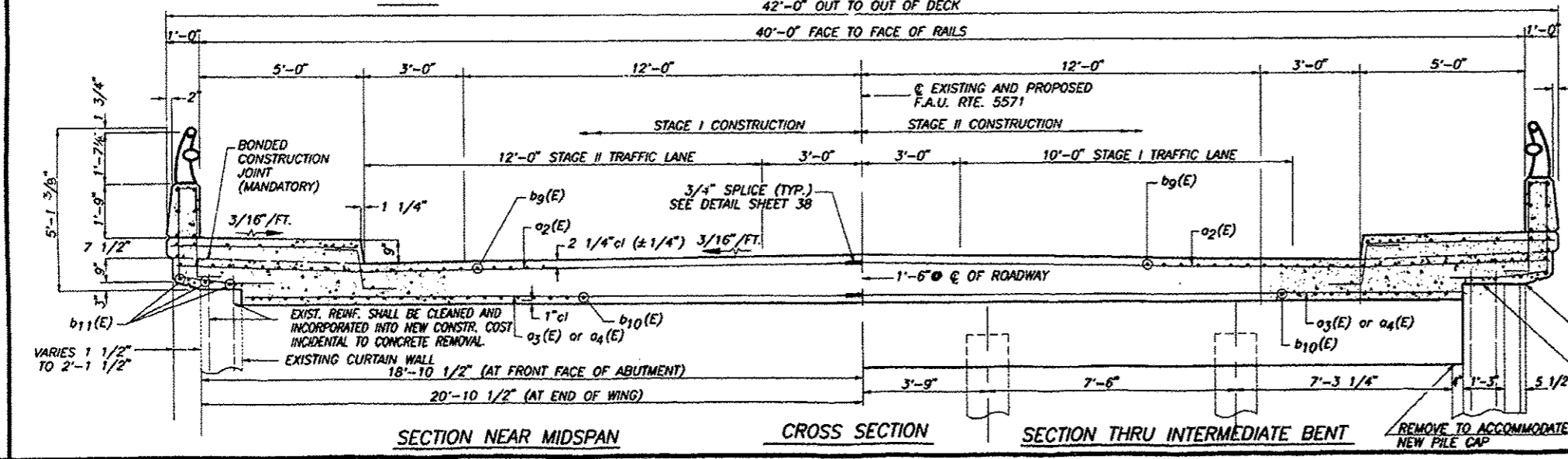
ROUTE NO.	SECTION	COUNTY	TOTAL SHEETS	SHEET NO.	SHEET NO. 30
F.A.U. 5571	BD	WHITESIDE	63	44	44 SHEETS
FED. RD. DIST. NO. 7	ILLINOIS	FED. AID PROJECT			



REINFORCEMENT BARS INDICATED (E) SHALL BE EPOXY COATED  
BARS INDICATED THUS 9x2-#8 INDICATES 9 LINES OF BARS WITH 2 BARS PER LINE



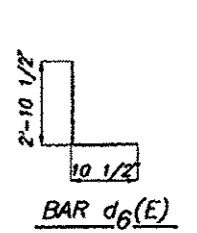
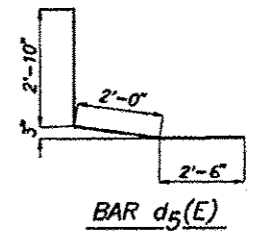
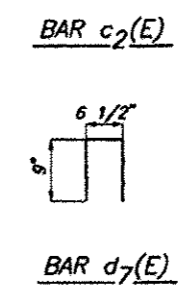
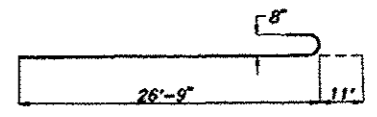
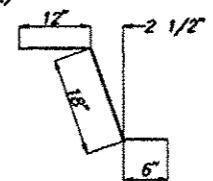
BONDED CONSTR. JOINT IN ACCORD. WITH ART. 504.13(a)(2) OF STD. SPECS.



3/4\"/>

SECTION A-A  
TWO APPR. SLABS  
BILL OF MATERIALS

BAR NO.	SIZE	LENGTH	SHAPE
o2(E)	140 #5	20'-5"	—
o3(E)	104 #5	19'-1"	—
o4(E)	104 #5	18'-1"	—
b9(E)	172 #8	50'-1"	—
b10(E)	312 #8	27'-8"	—
b11(E)	72 #5	26'-9"	—
c2(E)	204 #5	3'-0"	—
c3(E)	204 #5	5'-7"	—
d5(E)	204 #6	7'-4"	L
d6(E)	204 #4	3'-9"	L
d7(E)	40 #4	2'-6"	L
d8(E)	6 #6	4'-1 1/2"	L
d9(E)	10 #6	8'-11"	L
o3(E)	48 #4	24'-11"	—
REINFORCEMENT BARS (EPOXY COATED)			LBS. 59,930
CLASS X CONCRETE			CU.YDS. 258



**SUPERSTRUCTURE APPROACH SLABS**  
**VAULTED ABUTMENT NO 1 & 2**  
AVENUE "G" OVER NORTH CHANNEL OF THE ROCK RIVER  
F.A.U. RTE. 5571 SECTION BD  
WHITESIDE COUNTY  
STRUCTURE NO. 098-0051