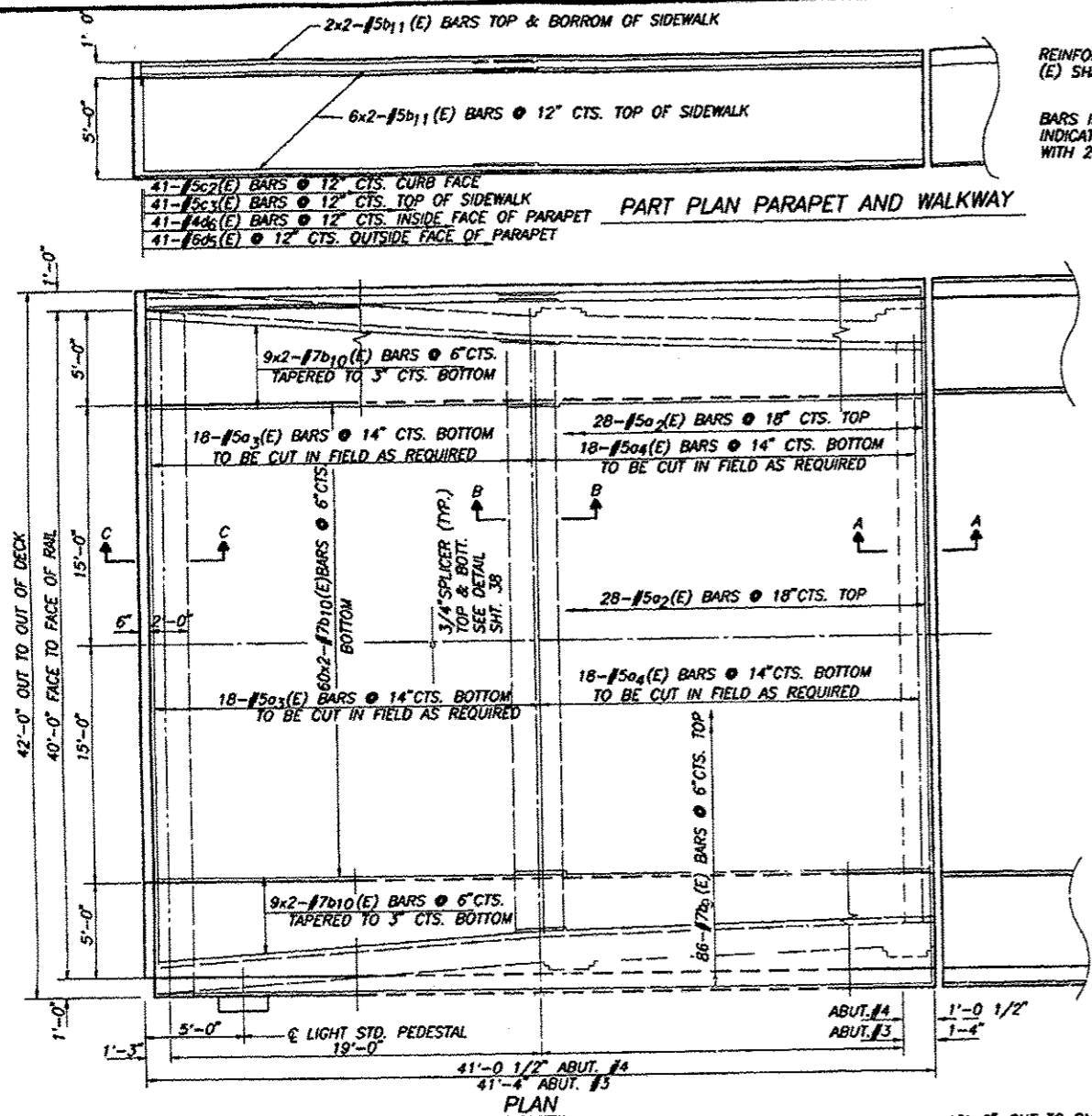


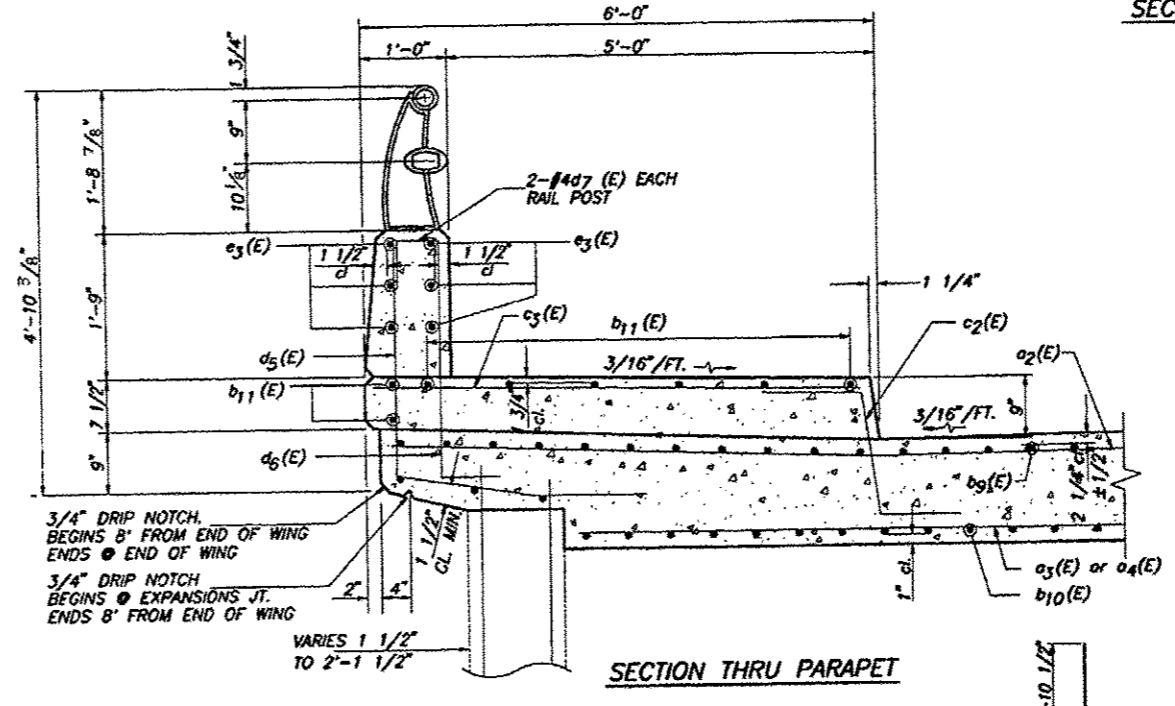
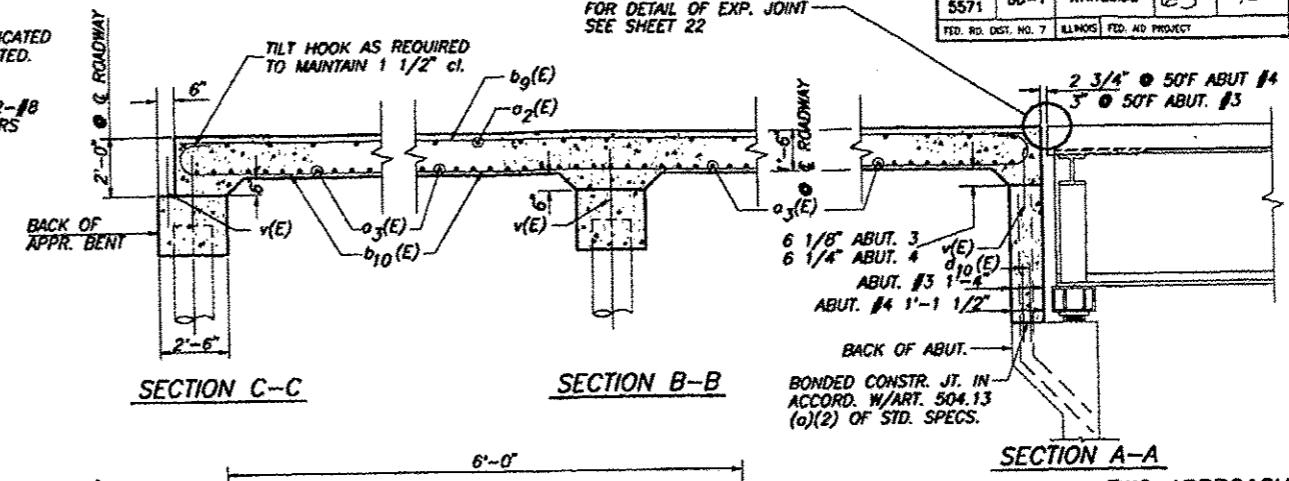
ROUTE NO.	SECTION	COUNTY	TOTAL SHEETS	SHEET NO.
F.A.U. 5571	BD-1	WHITESIDE	63	45
FED. RD. DIST. NO. 7		ILLINOIS	FED. RD. PROJECT	

SHEET NO. 31
44 SHEETS



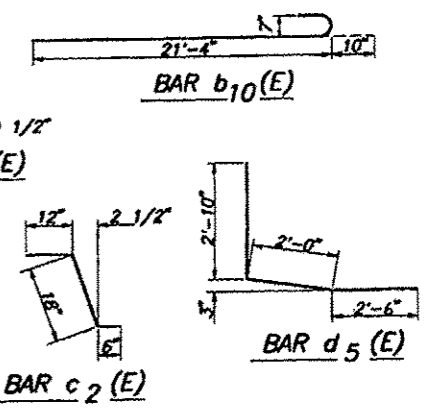
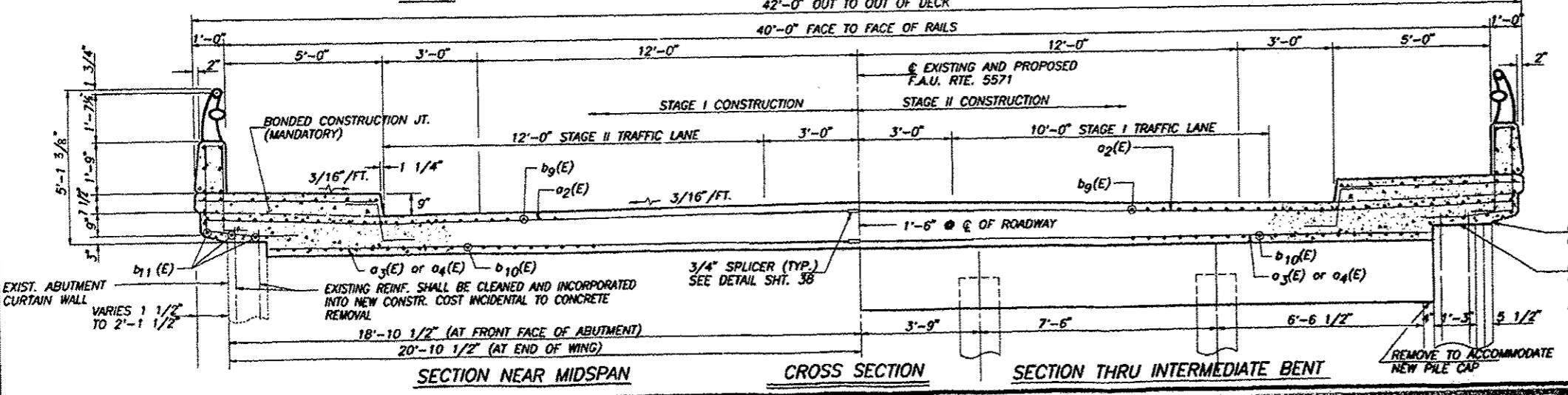
REINFORCEMENT BARS INDICATED (E) SHALL BE EPOXY COATED.

BARS INDICATED THUS 9x2-#8 INDICATES 9 LINES OF BARS WITH 2 BARS PER LINE



**TWO APPROACH SLABS
BILL OF MATERIALS**

BAR	NO.	SIZE	LENGTH	SHAPE
a2(E)	112	#5	20'-5"	
a3(E)	72	#5	19'-1"	
a4(E)	72	#5	18'-1"	
b9(E)	172	#7	40'-1"	
b10(E)	312	#7	22'-2"	
b11(E)	72	#5	21'-4"	
c2(E)	164	#5	3'-0"	
c3(E)	164	#6	5'-7"	
d5(E)	164	#6	7'-4"	
d6(E)	164	#4	3'-9"	
d7(E)	32	#4	2'-6"	
d8(E)	6	#6	4'-1 1/2"	
d9(E)	10	#6	8'-11"	
e3(E)	48	#4	19'-11"	
REINFORCEMENT BARS (EPOXY COATED)		LBS.		39,560
CLASS X CONCRETE		CU.YDS.		210



**SUPERSTRUCTURE
APPROACH SLABS
VAULTED ABUTMENT NO. 3 & 4**

AVENUE "G" OVER SOUTH CHANNEL OF THE ROCK RIVER
F.A.U. RTE. 5571 SECTION BD-1
WHITESIDE COUNTY
STRUCTURE NO. 098-0052