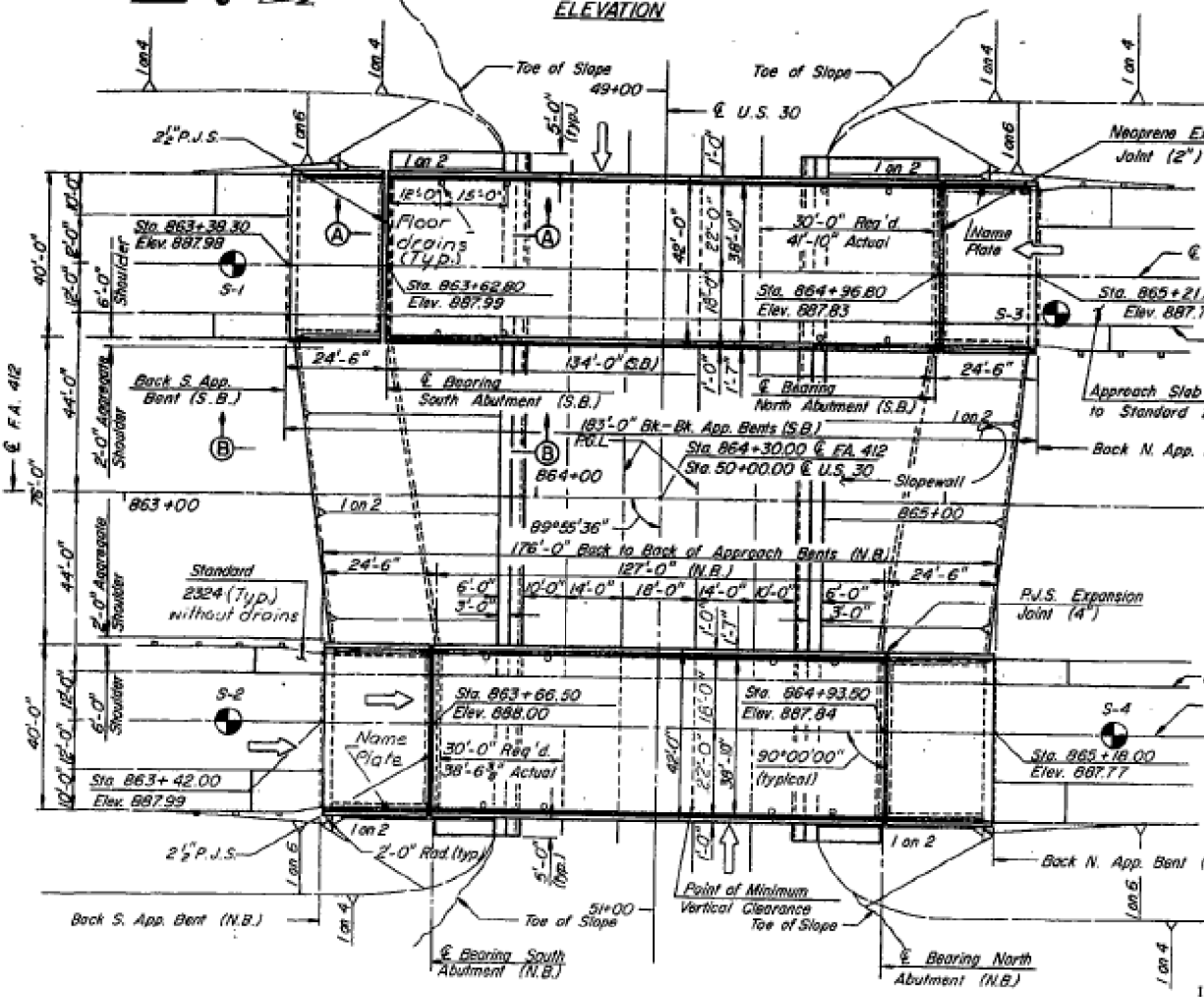
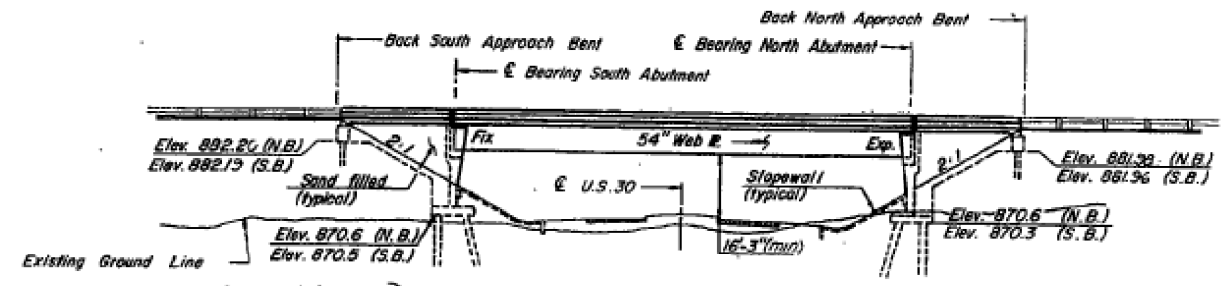
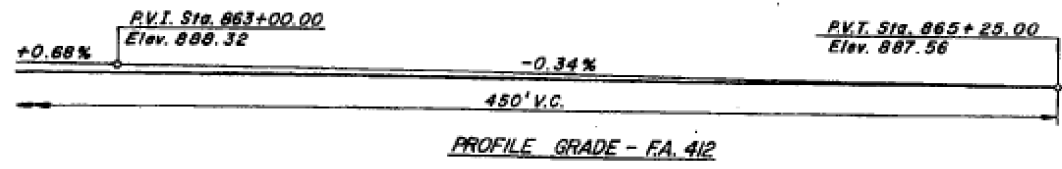


BENCHMARK: Benchmark No. 101-9, approximately 700 feet left of (F.A. 412 Station 864+40, is square cut in southeast end of headwall) north side of U.S. Route 30. Elevation 846.25.

ROUTE NO.	SECTION	COUNTY	TOTAL SHEETS	SHEET NO.
FA 412	103-2NB	LEE	113	42
STA.	TO STA.			
RD ROAD DIST NO 2	ILLINOIS	PROJECT		



DESIGN SPECIFICATIONS: American Association of State Highway and Transportation Officials Standard Specifications for Highway Bridges, 1977 thru 1982 Interim Specifications.
DESIGN LOADING: A.A.S.H.T.O. HS20-44 (25 pounds per square foot for future wearing surface on bridge deck).
DECK SLAB (Main Span & Appr. Spans)
 $f'c = 3500$ psi.
 $f_y = 60,000$ psi.
 $f_c = 1,400$ psi.

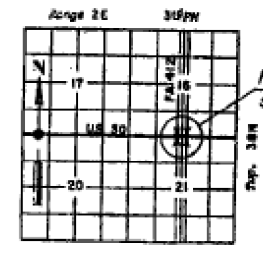
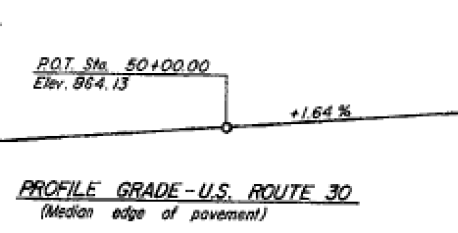
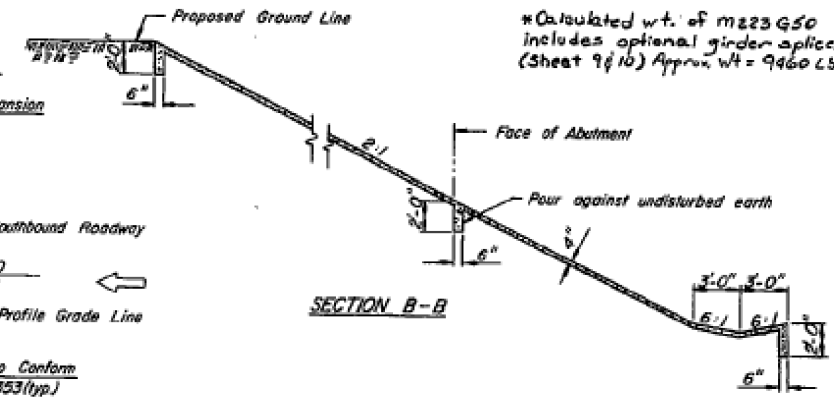
$vc = 56.2$ PSI
 $n = 9$
 Reinforcing Steel $f_s = 24,000$ PSI
 Structural Steel M183, $f_s = 20,000$ PSI
 M223, $f_s = 27,000$ PSI Grade 50
ANCHOR BOLTS: Anchor bolts for bearing devices shall be set before bolting cross frames over supports.
EMBARKMENT: The embankment configuration shown shall be the minimum embankment that must be constructed prior to construction of the abutments.

GENERAL NOTES
CONCRETE PILING: Concrete piles of the North Approach Bent 3B, and South Approach Bents shall be driven in holes pre-cast through the embankment in accordance with Article 513.09(C) of the Standard Specifications.
STRUCTURAL STEEL: Structural steel for webs, all stiffeners, cross frames, bearings, gusset plates, expansion joint angles, and attached bars shall conform to AASHTO designation M183. Structural steel for flanges, flange splice plates, web splice plates and flange splice fill plates shall conform to AASHTO designation M223-Gr 50.

SLOPE WALL: Slope wall shall be reinforced with welded wire fabric, 6"x6" mesh, W4.0 x W4.0 weighing 36 pounds per 100 square feet. All reinforcement bars shall conform to AASHTO M31 gr. 60 or M53 gr. 60.
PAINTING: The basic lead silice chromate paint system shall be used for shop and field painting of Structural Steel.
FIELD WELDING: Field welding of construction accessories will not be permitted to the bottom flange of the girders. Field welding in other areas will be permitted only when approved by the Engineer.
FIELD CONNECTIONS: Fasteners shall be high strength bolts. Bolts 7/8" diameter, open holes 1/2" diameter, unless otherwise noted. The main load carrying member components subject to the tensile stress shall conform to the Supplemental Requirements for Notch Toughness Zone 2. These components are the tension flanges, webs and a splice plate material designated NTR or the steel of bolts.

Calculated weight of structural steel = 194,150 pounds (M183), 273,230 lbs. (M223-Gr 50)
TEST PILING: The Contractor shall drive four concrete test piles in permanent locations, one at each abutment as directed by the Engineer, before ordering the remainder of piles.

TOTAL BILL OF MATERIALS				
ITEM	UNIT	Substr.	Superstr.	TOTAL
Sand Backfill	Cu. Yd.	470		470
Structure Excavation	Cu. Yd.	714		714
Protective Coat	Sq. Yd.	1831	1831	
Class X Concrete	Cu. Yd.	3680	5235	8915
Floor Drains	Each	16	16	
Stud Shear Connectors	Each	3528	3528	
Preformed Joint Seal (2")	Lin. Ft.	84	84	
Preformed Joint Seal (4")	Lin. Ft.	42	42	
Reinforcement Bars	Pounds	41700	59840	101540
Reinforcement Bars (Epoxy Coat)	Pounds		50770	50770
Structural Steel	Lump Sum		1	1
Slope Wall (4")	Sq. Yds.	1770		1770
Concrete Piles	Lin. Ft.	3791		3791
Test Pile Concrete	Each	4	4	
Neoprene Expansion Joint (2")	Lin. Ft.		41	41
Name Plates	Each		2	2

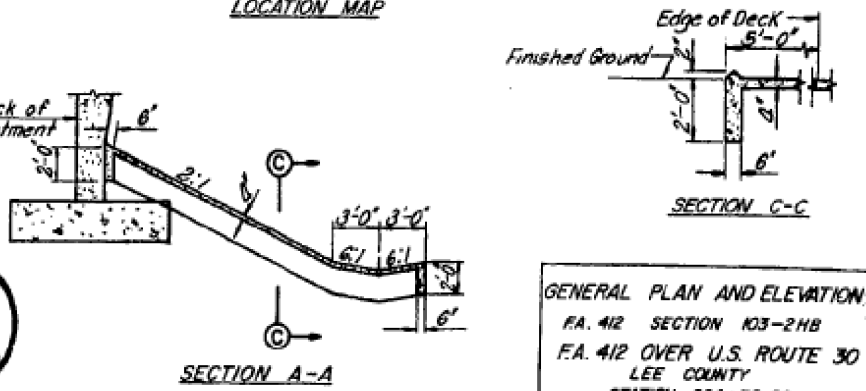


STATION 864+30.00
 BUILT IN BY
 STATE OF ILLINOIS
 F.A. RT. 412 SEC. 103-2NB
 F.A. PROJ. PD 41-4(B)
 LOADING HS20
 NAME PLATE
 (See Sid. 2113)
 ** Structure No. to be supplied by the District.

APPROVED
 FOR STRUCTURAL ADOPTION ONLY



I hereby certify that this plan and specification was prepared by me or under my direct personal supervision and that I am a duly registered Structural Engineer under the laws of the State of Illinois.
 Signed *Leslie J. Posen* Date 2-27-76
 Leslie J. Posen, S.E. Illinois Reg. No. 91-3703



GENERAL PLAN AND ELEVATION
 FA. 412 SECTION 103-2NB
 FA. 412 OVER U.S. ROUTE 30
 LEE COUNTY
 STATION 864+30.00
 STATE OF ILLINOIS
 DEPARTMENT OF TRANSPORTATION

HNTB
 M.B. J.J.G. 10.29.75 C.K. R.B.D. 11.25.75
 Rev DAB/RKM 2-3-83

DESIGNED -	REVISIONS -
DRAWN -	REVISIONS -
CHECKED -	REVISIONS -
DATE -	REVISIONS -

STATE OF ILLINOIS
 DEPARTMENT OF TRANSPORTATION

EXISTING BRIDGE PLANS

SHEET ___ OF ___ SHEETS STA. ___ TO STA. ___

F.A.I. RTE.	SECTION	COUNTY	TOTAL SHEETS	SHEET NO.
39	D2 Bridge Painting 2014-3	LEE	35	22
				CONTRACT NO. 64K10
ILLINOIS FED. AID PROJECT				