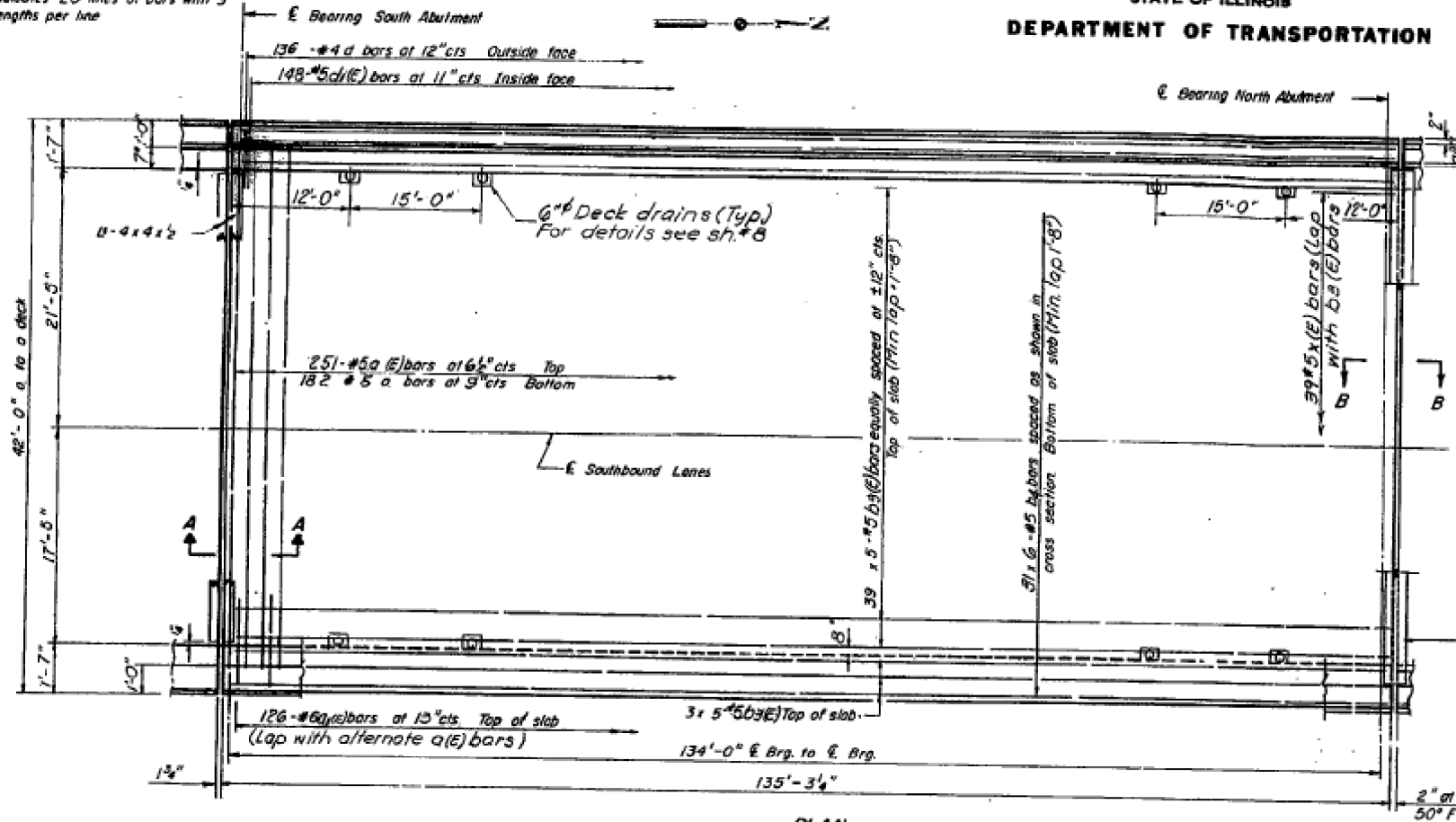


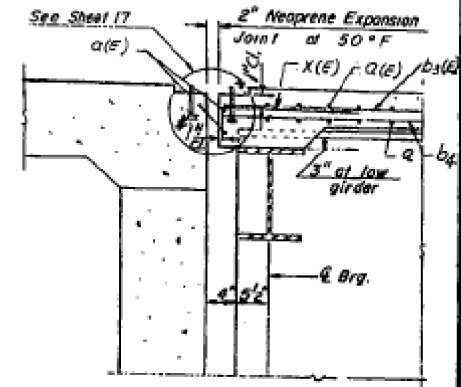
STATE OF ILLINOIS
DEPARTMENT OF TRANSPORTATION

ROUTE NO:	SECTION:	COUNTY:	TOTAL SHEETS:	SHEET NO.:
FA 412	103-2HB	LEE	113	48
STA.	TO STA.		PROJECT	
FED ROAD DIST NO 7	ILLINOIS	PROJECT		

NOTE:
Bars indicated thus 20 x 3-#5 etc
indicates 20 lines of bars with 3
lengths per line

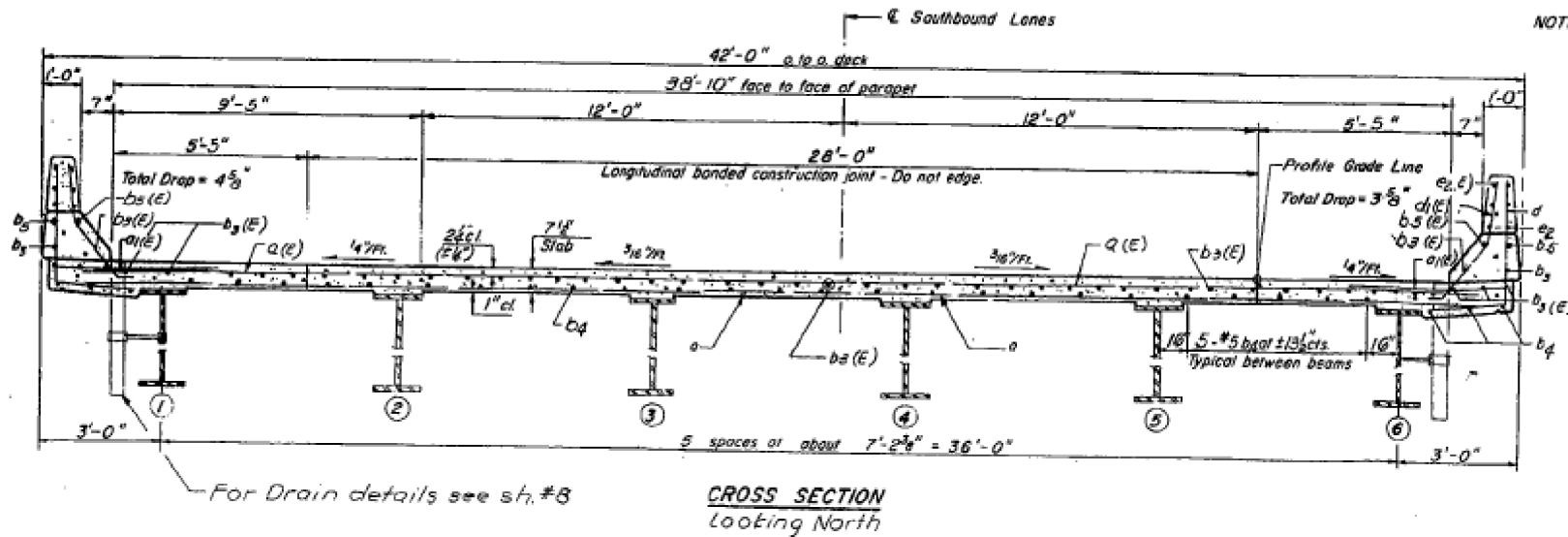


PLAN



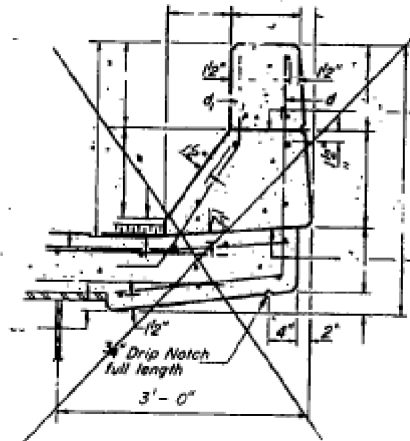
SECTION B-B

* Place a(E) bars in back of anchor bolt as shown if required to maintain 1" Cl. (+0-1/8") Anchor bolts should be tied to a(E) bars.



CROSS SECTION
Looking North

NOTE: For placement of bars E2(E) and E3 see sheet #8



BILL OF MATERIAL

Bar	No.	Size	Length	Shape
a(E)	251	#5	40'-2"	
a	182	#5	40'-2"	
a(E)	252	#6	4'-0"	
b2(E)	225	#5	29'-0"	
b3	180	#5	24'-0"	
d	272	#4	5'-0"	J
c(E)	296	#5	3'-11"	J
X(E)	39	#5	4'-1"	
Reinf. Bars (Epoxy Coat)		Lbs.	20,210	
Reinforcement Bars		Lbs.	13,190	
Class X Concrete		Cu Yds.	133.3	
2" Neoprene Exp. Jt.		Lin. Ft.	42	
2 1/2" Preformed Jt. Seal		Lin. Ft.	42	

Notes:
Reinforcement bars designated (E) shall be epoxy coated. See Spec. Provs. For Section A-A, see Sheet #6
Class X Concrete in Parapet is billed on sheet #8
For section thru Parapet see Sheet #8.

DECK DETAILS
SOUTHBOUND
FA. 412 SECTION 103-2HB
FA. 412 OVER U.S. ROUTE 30
LEE COUNTY
STATION 864+30.00
STATE OF ILLINOIS
DEPARTMENT OF TRANSPORTATION

DESIGNED DNC
CHECKED RBD
DRAWN DNC
CHECKED JJB

Rev DAB/RKM 2-5-83

STATE OF ILLINOIS
DEPARTMENT OF TRANSPORTATION

EXISTING BRIDGE PLANS

SHEET ___ OF ___ SHEETS STA. ___ TO STA. ___

F.A.I. RTE.	SECTION	COUNTY	TOTAL SHEETS	SHEET NO.
39	D2 Bridge Painting 2014-3	LEE	35	24
				CONTRACT NO. 64K10

ILLINOIS FED. AID PROJECT