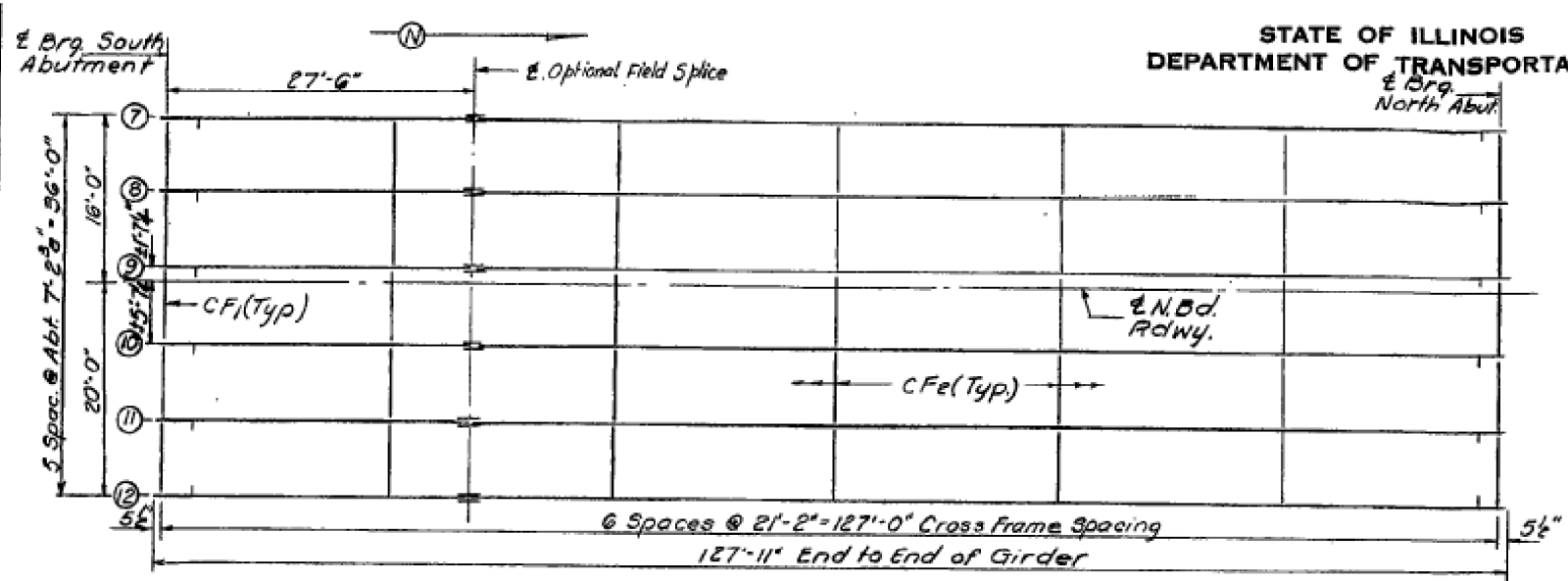


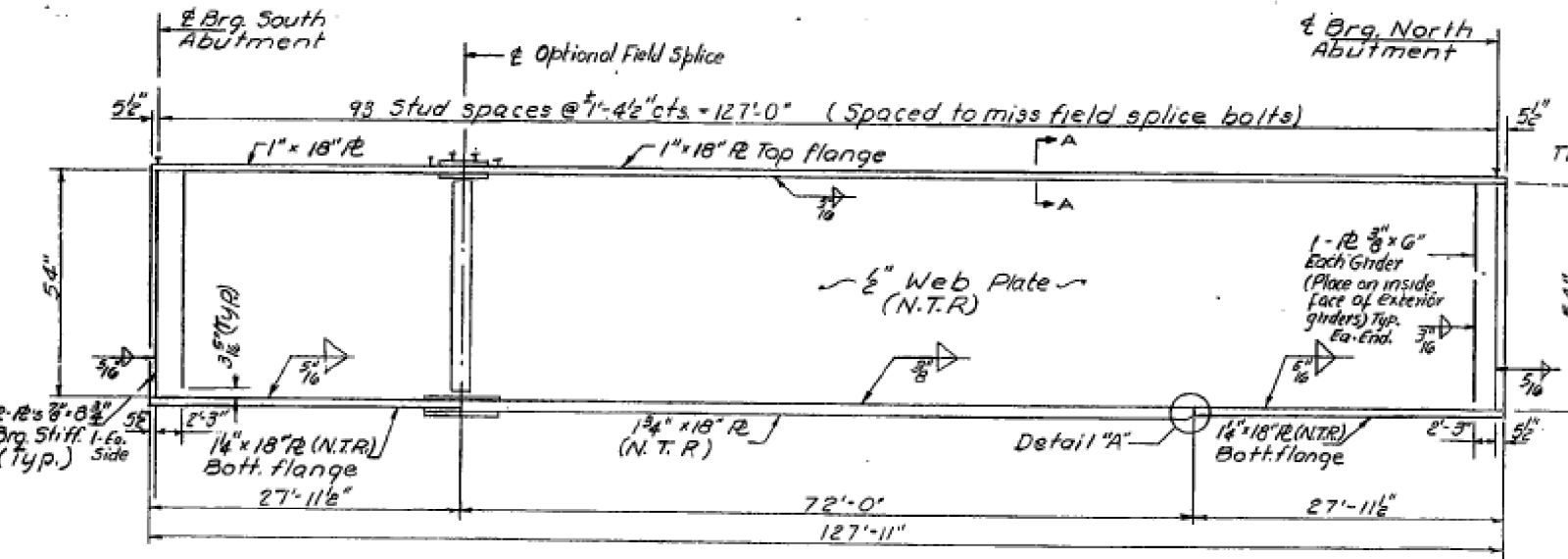
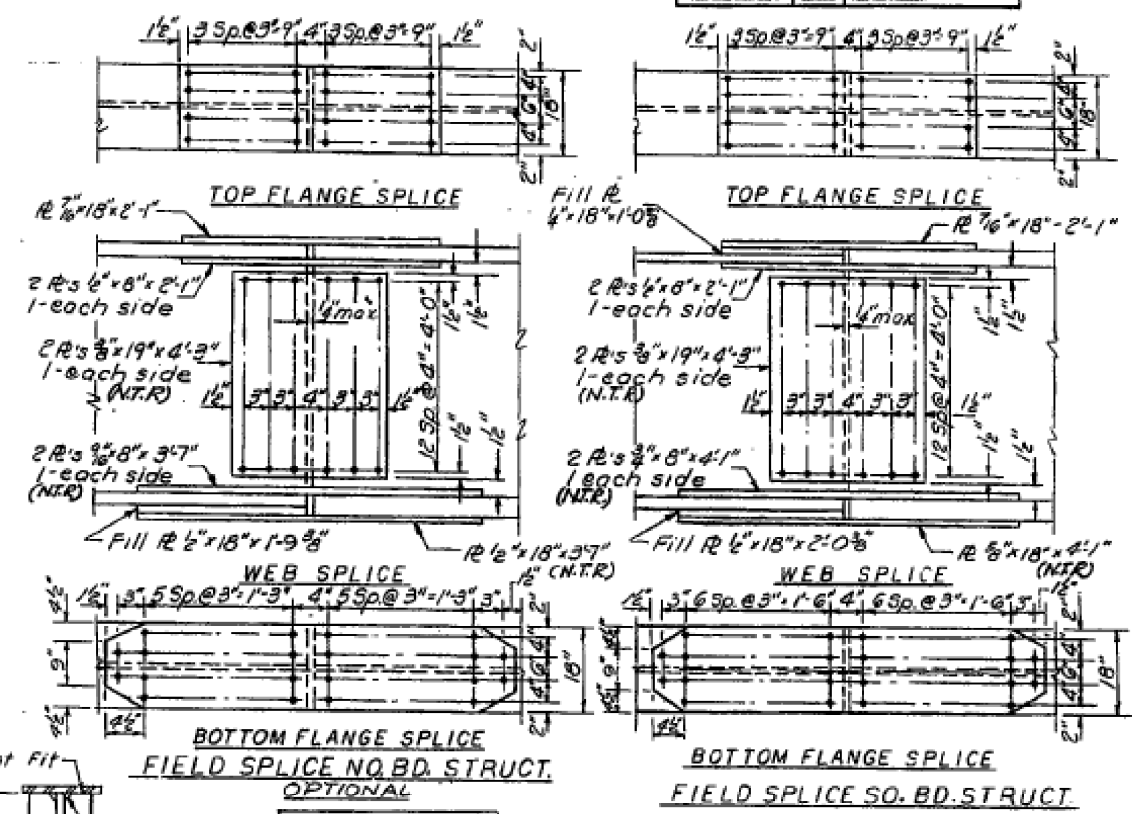
STATE OF ILLINOIS
DEPARTMENT OF TRANSPORTATION

DATE	REVISION	BY	NO.	DATE	NO.
10/1/12	L.A.G.	113	50		

SHEET NO. 9
20 SHEETS



FRAMING PLAN



INTERIOR GIRDER ELEVATION

TOP OF WEB ELEVATIONS

Girder	7	8	9	10	11	12
± Brg. So. Abut.	886.96	887.09	887.20	887.14	887.02	886.87
± Splice*	887.14	887.27	887.38	887.32	887.20	887.03
± Brg. No. Abut.	886.80	886.93	887.04	886.98	886.86	886.71

(For Fabrication only)

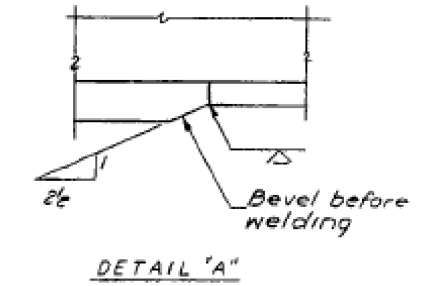
INTERIOR GIRDER MOMENT TABLE (N.B.)

Midspan	Value
Is (in ⁴)	42741
Ic (in ⁴)	94557
Sc (in ³)	1800
S _c (in ³)	2262
Q (k/ft)	0.972
M _Q (k)	1959
f _s (ksi)	13.1
S _Q (k)	.299
M _{SQ} (k)	603
M _Q (k)	1312
M _{Imp} (k)	260
M _{Q+Imp}	2175
I _s (in ⁴)	11.5
f _s total (ksi)	24.6
VR (k)	523

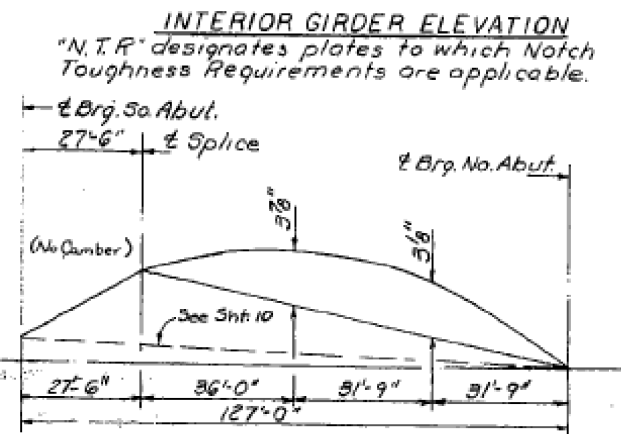
INTERIOR GIRDER REACTION TABLE (N.B.)

Abutment	Value
R _Q (k)	80.7
R _S (k)	43.6
R _{Imp} (k)	8.7
R _{Total} (k)	133.0

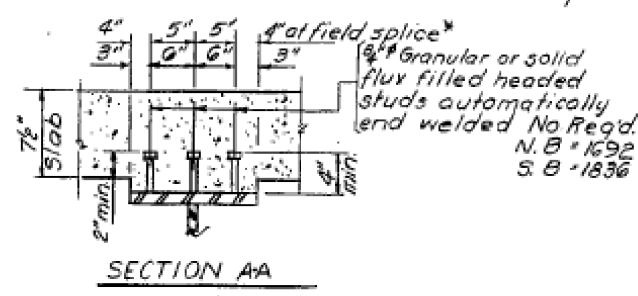
Notes:
All contact surfaces of the joints for the cross frames shall be free of paint or lacquer.
All structural steel for girder flanges and splice plates shall be AASHTO M 229 Gr. 50 and the girder web, stiffeners and cross frames shall be AASHTO M 183.
For cross frame details see sheet #10
See Sheet #10 for Camber Diagram without the optional field splice.



DETAIL 'A'



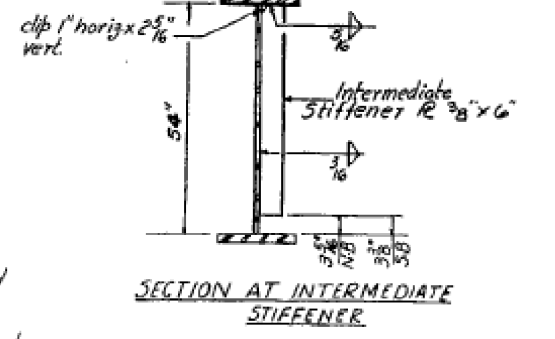
CAMBER DIAGRAM - No. Bd. Struct. (WITH OPTIONAL FIELD SPLICE)



SECTION AA

*Optional

Is and Ss are the moment of inertia and section modulus of the steel section used in computing f_s Q.
Ic and Sc are the moment of inertia and section modulus of the composite section used in computing f_s (S_Q + ± Imp.)
VR is the maximum ± Impact shear range in span used to determine shear connector spacing.



SECTION AT INTERMEDIATE STIFFENER

FRAMING PLAN NORTHBOUND

± STRUCTURAL STEEL DETAILS

F.A.R.T.E. 412 SEC. 103-2HB

LEE COUNTY

STA. 864+30.00

REVISED 5-28-83

Rev 2-3-83 Rev 3-28-83 D.D.

DESIGNED	VRB
CHECKED	RKM
DRAWN	FM
CHECKED	RKM

DESIGNED	---	REVISED	---
DRAWN	---	REVISED	---
CHECKED	---	REVISED	---
DATE	---	REVISED	---

STATE OF ILLINOIS
DEPARTMENT OF TRANSPORTATION

EXISTING BRIDGE PLANS

SHEET ___ OF ___ SHEETS STA. ___ TO STA. ___

F.A.I. RT.E.	SECTION	COUNTY	TOTAL SHEETS	SHEET NO.
39	D2 Bridge Painting 2014-3	LEE	35	25
			CONTRACT NO. 64K10	

ILLINOIS FED. AID PROJECT