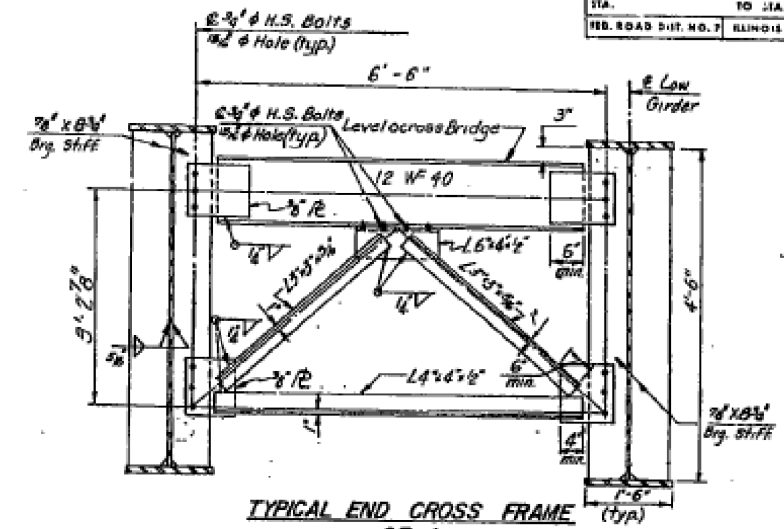
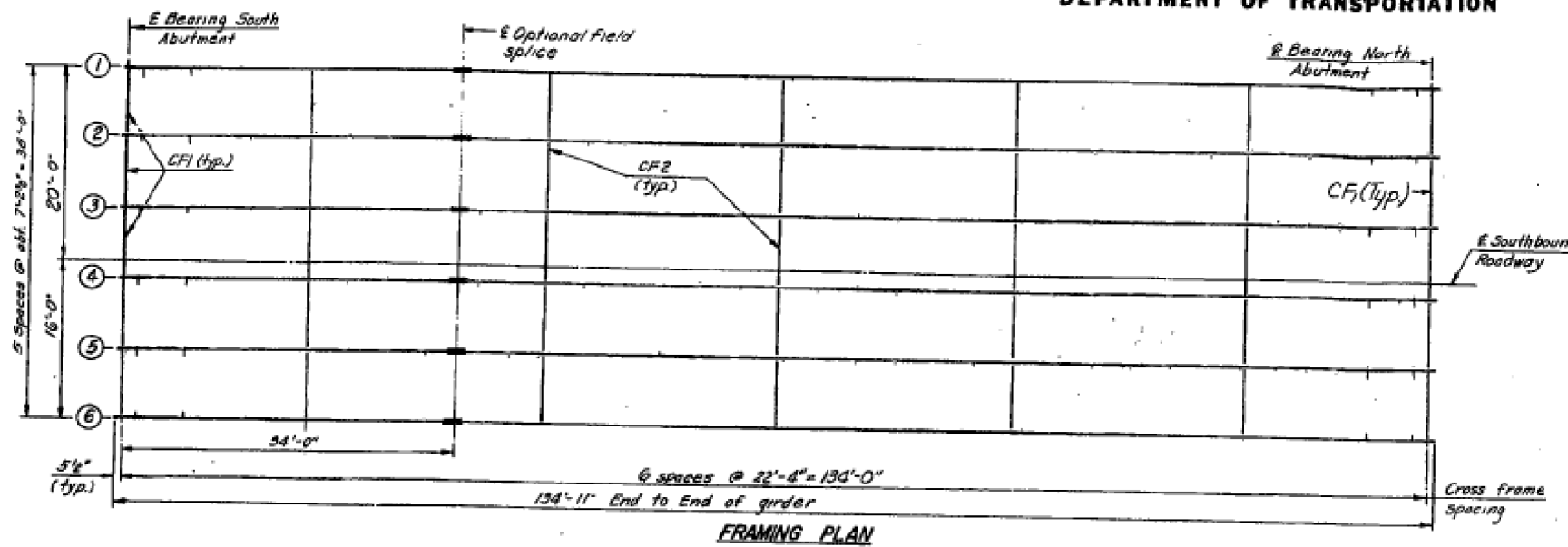


STATE OF ILLINOIS
DEPARTMENT OF TRANSPORTATION

LOCAL P.L. SECTION COUNTY TOTAL SHEETS SHEET NO.	PA. 412 103-2HB LEE 113 51	SHIT NO. 10
STA. TO STA.	TO STA.	of 20 SHEETS
FED. ROAD DIST. NO. 7 ILLINOIS PROJECT		



Moment	Table (SB)
I_s (in ⁴)	50,224
I_c (in ⁴)	104,118
S_s (in ³)	2052
S_c (in ³)	2515
E (ksi)	29,000
M_e (in-k)	2291
F_{aE} (ksi)	15.0
S_E (in ³)	299
M_{sE} (in-k)	671
M_t (in-k)	1394
M_{imp} (in-k)	269
$M_{max+imp}$ (in-k)	2334
I_{sp} (in ⁴)	111
F_s total (ksi)	24.1
V_R (k)	53.7

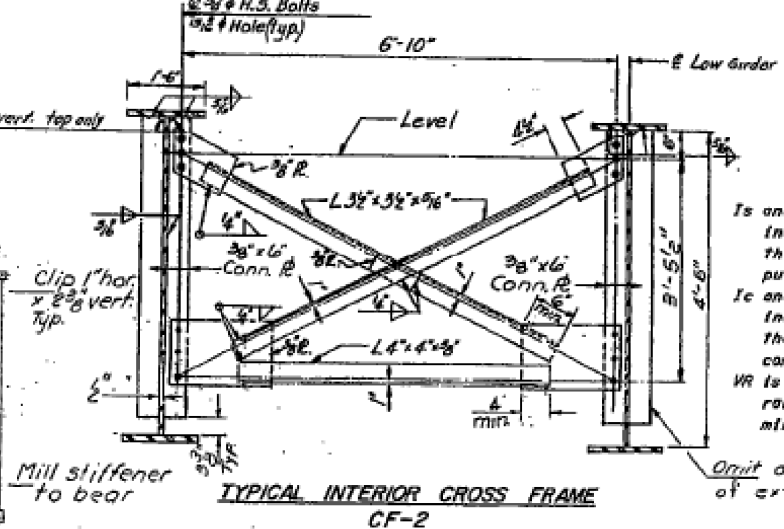
Reaction	Table (SB)
R_e (k)	86.6
R_t (k)	45.1
R_{sp} (k)	3.7
R_{total} (k)	140.4

I_s and S_s are the moment of inertia and section modulus of the steel section used in computing f_s .

I_c and S_c are the moment of inertia and section modulus of the composite section used in computing $f_s + f_c + IMP$.

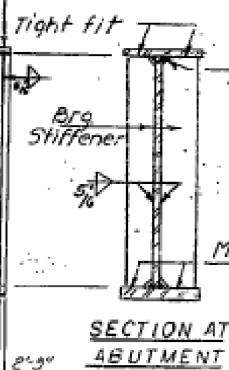
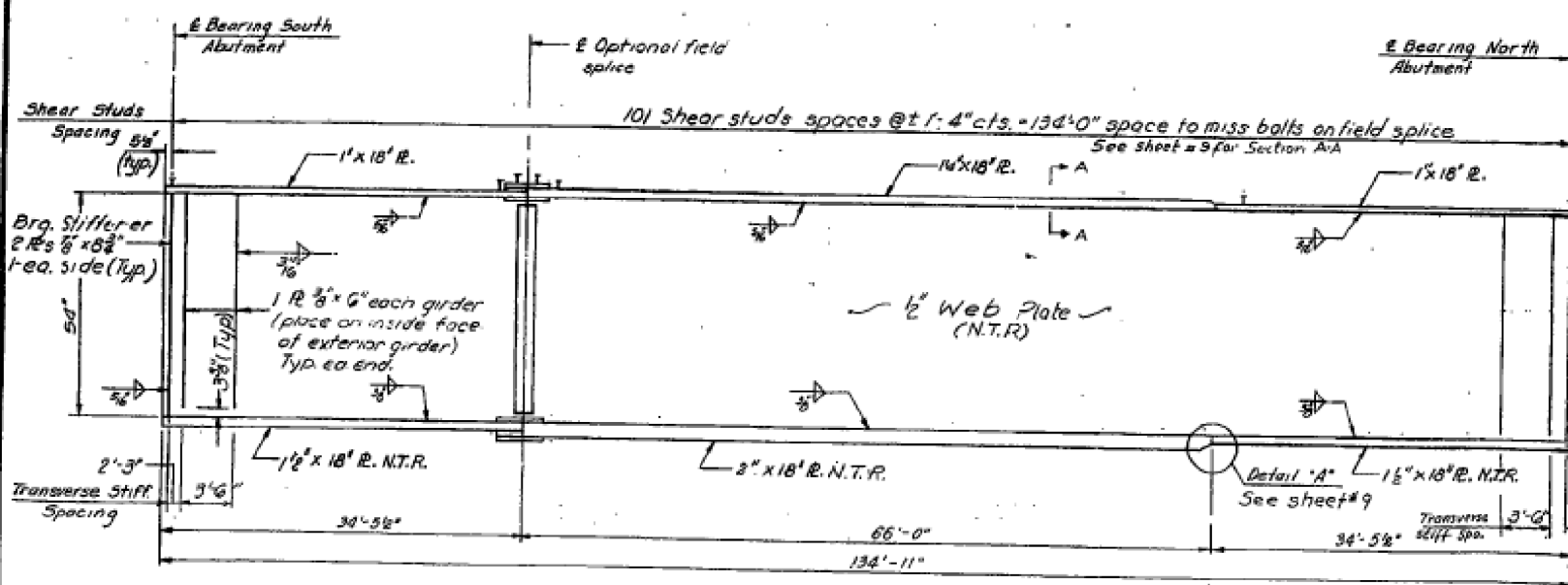
V_R is the maximum $f_c + IMP$ shear range in span used to determine shear connector spacing.

Omit on outside face of exterior girders



Notes:

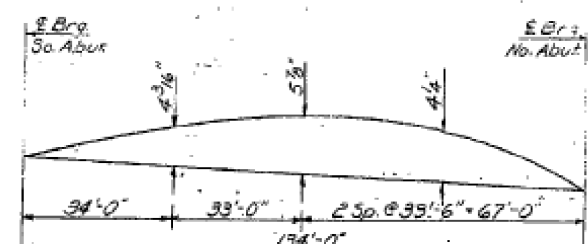
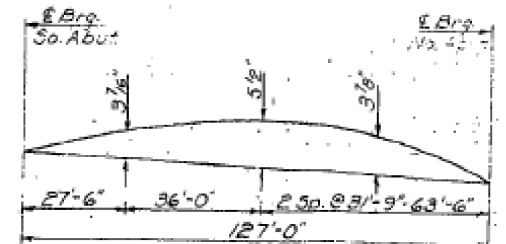
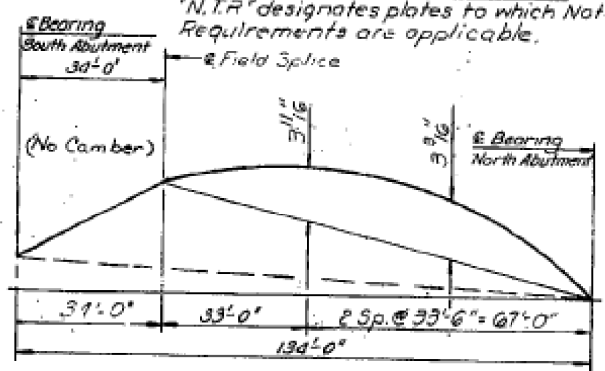
- Hardened washers shall be required over f_c holes in cross frame.
- All contact surfaces of the joints for the cross frames shall be true at point or locquer.
- All structural steel for girder flanges shall be AASHTO M223 Gr. 50 and the girder web, stiffeners and cross frames shall be AASHTO M183.
- See sheet #9 for splice details, and sec. @ intermediate stiffener.



TOP OF WEB ELEVATIONS FOR FABRICATION

Girder	So. Abut.	@ Splice	No. Abut.
1	886.87	887.10	886.70
2	887.02	887.25	886.85
3	887.14	887.37	886.97
4	887.20	887.43	887.03
5	887.09	887.32	886.92
6	886.95	887.19	886.79

DESIGNED R.B.D.
CHECKED M.P.S.
DRAWN D.N.C.
CHECKED R.B.D.



FRAMING PLAN SOUTHBOUND & STRUCTURAL STEEL DETAILS
FA. 412 SECTION 103-2HB
FA. 412 OVER U.S. ROUTE 30
LEE COUNTY
STATION 864+30.00
STATE OF ILLINOIS
DEPARTMENT OF TRANSPORTATION

HOWARD, NEEDLES, TAMMEN & BERGENSHOF INC. HNTB
Rev DAB/RKM 2-3-83

DESIGNED -	REVISD -
DRAWN -	REVISD -
CHECKED -	REVISD -
DATE -	REVISD -

STATE OF ILLINOIS
DEPARTMENT OF TRANSPORTATION

EXISTING BRIDGE PLANS

SHEET ___ OF ___ SHEETS STA. ___ TO STA. ___

F.A.I. RTE.	SECTION	COUNTY	TOTAL SHEETS	SHEET NO.
39	D2 Bridge Painting 2014-3	LEE	35	26
				CONTRACT NO. 64K10
ILLINOIS FED. AID PROJECT				