

INDEX OF SHEETS

1. COVER SHEET
2. GENERAL NOTES
3. SUMMARY OF QUANTITIES
4. TYPICAL SECTIONS
5. SCHEDULES
6. DETAILS

STANDARDS

000001-06	STANDARD SYMBOLS, ABBREVIATIONS AND PATTERNS
001006	DECIMAL OF AN INCH AND OF A FOOT
635001-01	DELINEATORS
642006	SHOULDER RUMBLE STRIPS, 8 INCH
701326-04	LANE CLOSURE, 2L, 2W, PAVEMENT WIDENING FOR SPEEDS
701901-03	TRAFFIC CONTROL DEVICES
720001-01	SIGN PANEL MOUNTING DETAILS
720006-04	SIGN PANEL ERECTION DETAILS
720011-01	METAL POSTS FOR SIGNS, MARKERS, & DELINEATORS
780001-04	TYPICAL PAVEMENT MARKINGS

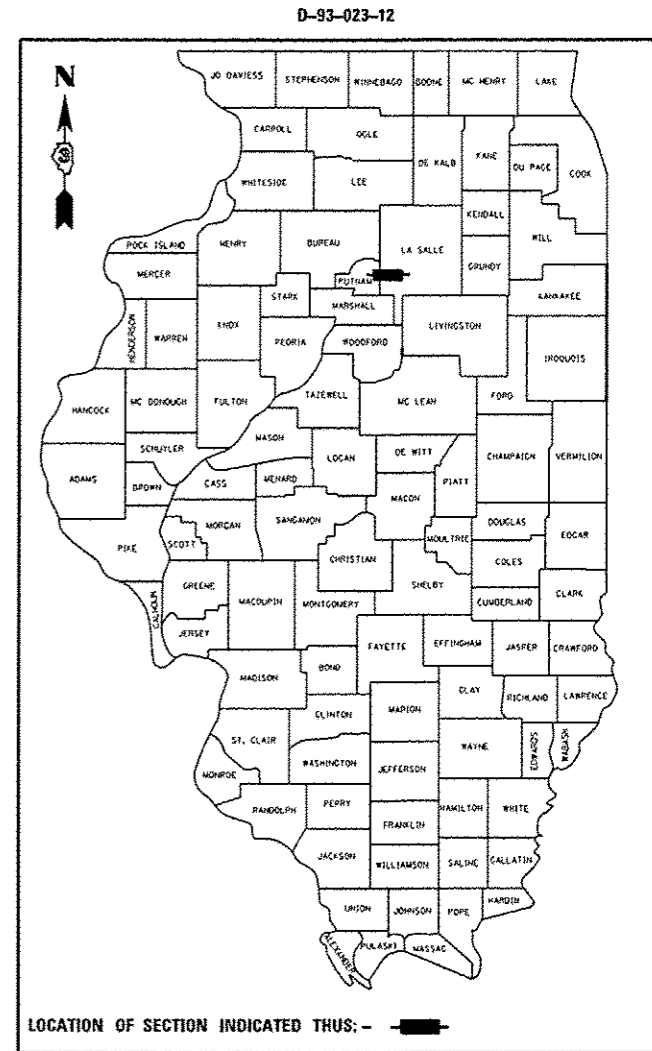
STATE OF ILLINOIS
DEPARTMENT OF TRANSPORTATION
DIVISION OF HIGHWAYS
**PROPOSED
HIGHWAY PLANS**

FAP 619 (IL 71)
SECTION 103RS-4&I
PROJECT: ACHSIP-0619(022)
WIDENING

LASALLE COUNTY

C-93-028-12

F.A.P. RTE.	SECTION	COUNTY	TOTAL SHEETS	SHEET NO.
619	103RS-4&I	LASALLE	6	1
ILLINOIS CONTRACT NO. 66B79				



LOCATION OF SECTION INDICATED THUS: - [black rectangle] -

FUNCTIONAL CLASSIFICATION
RURAL ARTERIAL
2012 ADT = 2600
P.V. = 62.50% M.U. = 21.15% S.U. = 16.35%

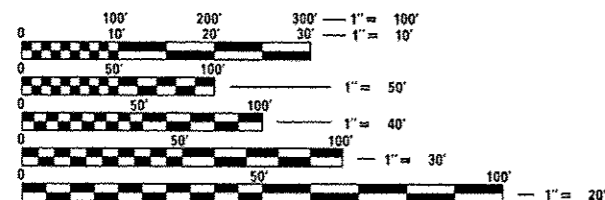
STATE OF ILLINOIS
DEPARTMENT OF TRANSPORTATION
DIVISION OF HIGHWAYS

SUBMITTED Mar 28 20 14
Paul Coetzee, P.E.
DEPUTY DIRECTOR OF HIGHWAYS, REGION ENGINEER

May 9 20 14
John D. Baranzoni, P.E.
ENGINEER OF DESIGN AND ENVIRONMENT

May 9 20 14
Eric Osman, P.E.
DIRECTOR OF HIGHWAYS, CHIEF ENGINEER

**PRINTED BY THE AUTHORITY
OF THE STATE OF ILLINOIS**

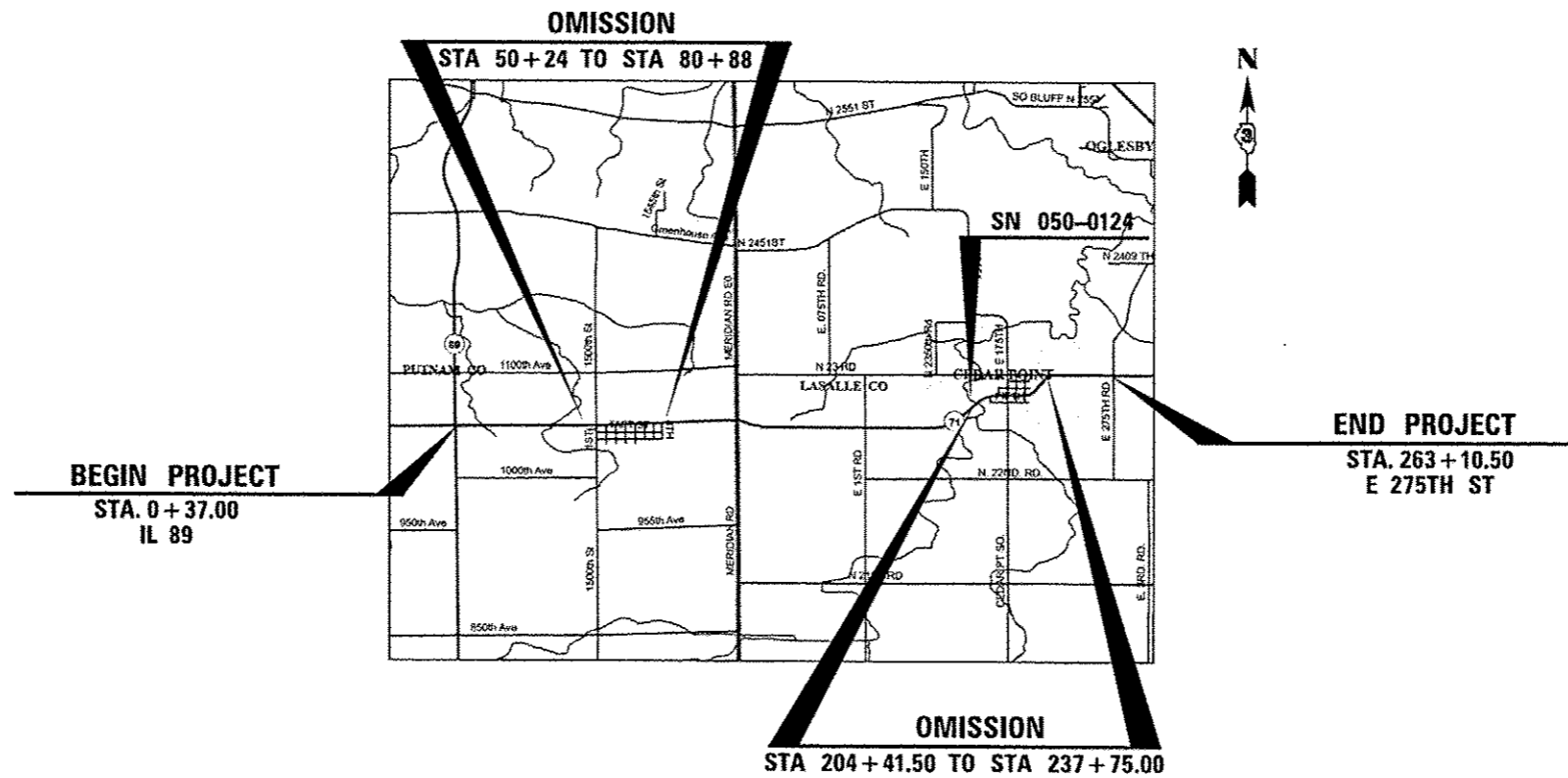


FULL SIZE PLANS HAVE BEEN PREPARED USING STANDARD ENGINEERING SCALES. REDUCED SIZED PLANS WILL NOT CONFORM TO STANDARD SCALES. IN MAKING MEASUREMENTS ON REDUCED PLANS, THE ABOVE SCALES MAY BE USED.

J.U.L.I.E.
JOINT UTILITY LOCATION INFORMATION FOR EXCAVATION
1-800-892-0123
OR 811

DISTRICT 3 NO. (815) 434-6131
PROJECT ENGINEER: JOE KANNEL, P.E.
UNIT CHIEF: SCOTT A. FERGUSON

CONTRACT NO. 66B79



GROSS LENGTH = 19,876.00 FT. = 3.76 MILES
NET LENGTH = 26,273.5 FT. = 4.98 MILES
LOCATION MAP
NOT TO SCALE