

1. COVER SHEET
2. GENERAL NOTES
3. SUMMARY OF QUANTITIES
4. TYPICAL SECTIONS
5. SCHEDULES
6. DETAILS

STANDARDS

000001-06	STANDARD SYMBOLS, ABBREVIATIONS AND PATTERNS
001006	DECIMAL OF AN INCH AND OF A FOOT
635001-01	DELINEATORS
642006	SHOULDER RUMBLE STRIPS, 8 INCH
701326-04	LANE CLOSURE, 2L, 2W, PAVEMENT WIDENING FOR SPEEDS
701901-03	TRAFFIC CONTROL DEVICES
720001-01	SIGN PANEL MOUNTING DETAILS
720006-04	SIGN PANEL ERECTION DETAILS
720011-01	METAL POSTS FOR SIGNS, MARKERS, & DELINEATORS
780001-04	TYPICAL PAVEMENT MARKINGS

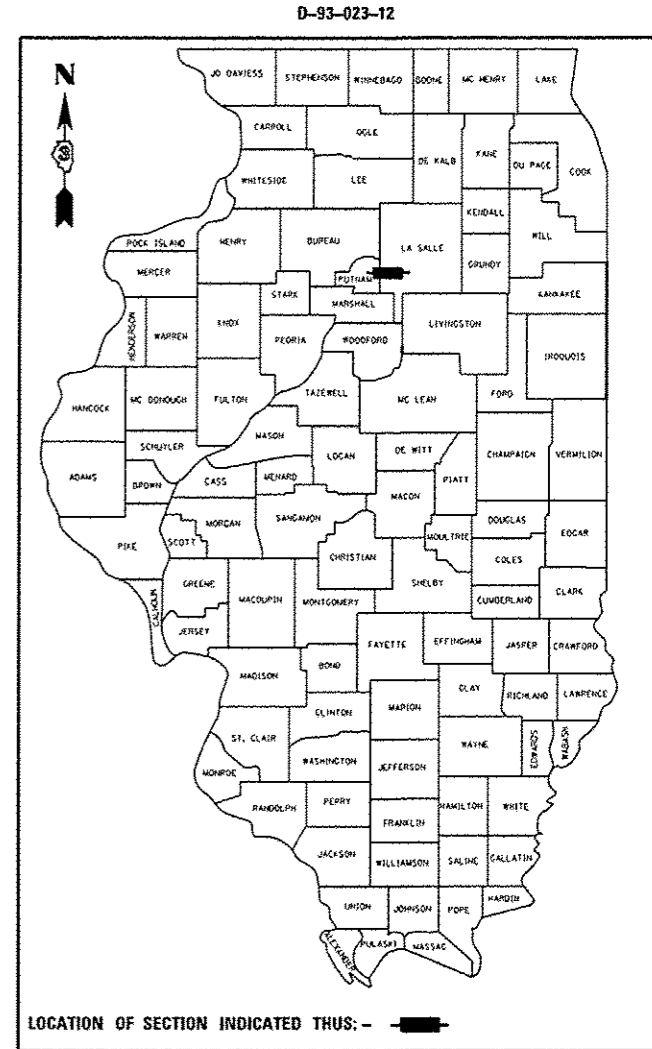
**STATE OF ILLINOIS**  
**DEPARTMENT OF TRANSPORTATION**  
**DIVISION OF HIGHWAYS**  
**PROPOSED**  
**HIGHWAY PLANS**

FAP 619 (IL 71)  
SECTION 103RS-4&I  
PROJECT: ACHSIP-0619(022)  
WIDENING

**LASALLE COUNTY**

C-93-028-12

F.A.P. RTE.	SECTION	COUNTY	TOTAL SHEETS	SHEET NO.
619	103RS-4&I	LASALLE	6	1
ILLINOIS CONTRACT NO. 66B79				



**FUNCTIONAL CLASSIFICATION**  
**RURAL ARTERIAL**  
2012 ADT = 2600  
P.V. = 62.50%    M.U. = 21.15%    S.U. = 16.35%

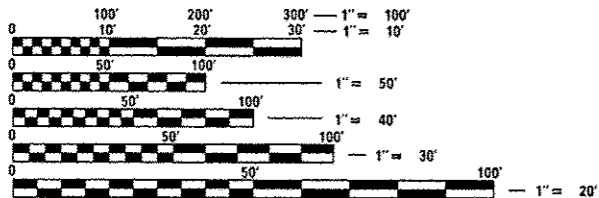
STATE OF ILLINOIS  
DEPARTMENT OF TRANSPORTATION  
DIVISION OF HIGHWAYS

SUBMITTED Mar 28 20 14  
Paul Coetzee, P.E.  
DEPUTY DIRECTOR OF HIGHWAYS, REGION ENGINEER

May 9 20 14  
John D. Baranzoni, P.E.  
ENGINEER OF DESIGN AND ENVIRONMENT

May 9 20 14  
Eric Osman, P.E.  
DIRECTOR OF HIGHWAYS, CHIEF ENGINEER

**PRINTED BY THE AUTHORITY**  
**OF THE STATE OF ILLINOIS**

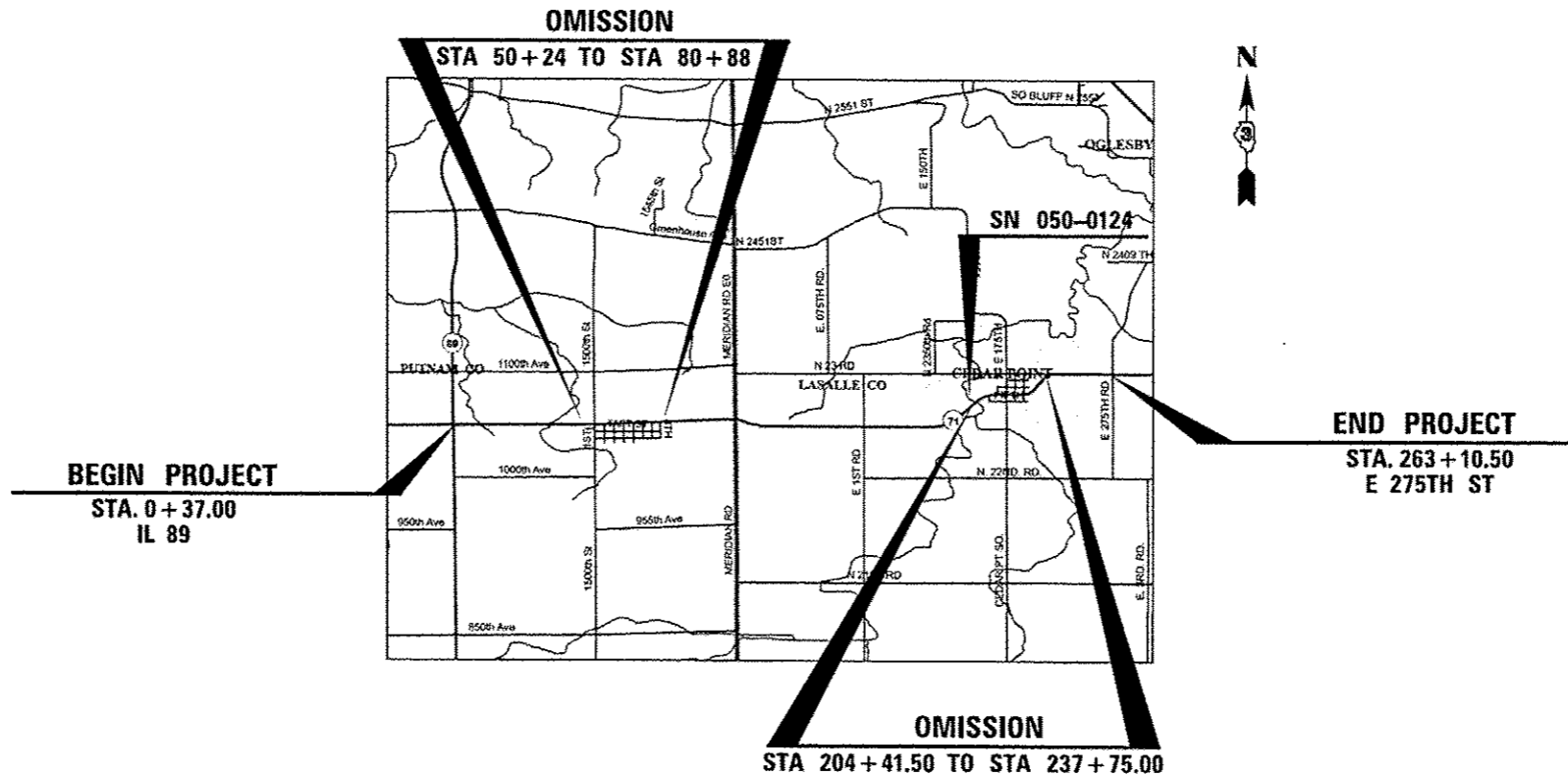


FULL SIZE PLANS HAVE BEEN PREPARED USING STANDARD ENGINEERING SCALES. REDUCED SIZED PLANS WILL NOT CONFORM TO STANDARD SCALES. IN MAKING MEASUREMENTS ON REDUCED PLANS, THE ABOVE SCALES MAY BE USED.

J.U.L.I.E.  
JOINT UTILITY LOCATION INFORMATION FOR EXCAVATION  
1-800-892-0123  
OR 811

DISTRICT 3 NO. (815) 434-6131  
PROJECT ENGINEER: JOE KANNEL, P.E.  
UNIT CHIEF: SCOTT A. FERGUSON

CONTRACT NO. 66B79



GROSS LENGTH = 19,876.00 FT. = 3.76 MILES  
NET LENGTH = 26,273.5 FT. = 4.98 MILES  
LOCATION MAP  
NOT TO SCALE

**GENERAL NOTES**

PLAN DIMENSIONS RELATIVE TO THE EXISTING ROADWAY HAVE BEEN TAKEN FROM EXISTING PLANS AND ARE SUBJECT TO NOMINAL CONSTRUCTION VARIATIONS. IT SHALL BE THE CONTRACTOR'S RESPONSIBILITY TO MAKE NECESSARY ADJUSTMENTS PRIOR TO CONSTRUCTION OR ORDERING OF MATERIALS. SUCH VARIATIONS SHALL NOT BE CAUSE FOR ADDITIONAL COMPENSATION FOR A CHANGE IN THE SCOPE OF THE WORK. HOWEVER, THE CONTRACTOR WILL BE PAID FOR THE QUANTITY FURNISHED AT THE UNIT PRICE BID FOR THE WORK.

ANY REFERENCE TO A STANDARD IN THESE PLANS SHALL BE INTERPRETED TO MEAN THE EDITION AS INDICATED BY THE SUBNUMBER SHOWN IN THE LIST OF STANDARDS OR THE COPY INCLUDED IN THESE PLANS.

THE CONTRACTOR SHALL CONTACT JULIE AT LEAST 48 HOURS PRIOR TO EXCAVATION TO DETERMINE WHICH UTILITIES ARE IN THE AREA.

THE FOLLOWING RATES OF APPLICATION WERE USED IN CALCULATING PLAN QUANTITIES:

HMA RESURFACING	112	LBS / SQ YD / IN
MIX FOR CRACK, JTS, & FLGWYS	0.0003	TONS / SQ YD

BITUMINOUS MATERIALS (PRIME COAT) RATES	
TYPE OF SURFACE TO BE PRIMED	RESIDUAL ASPHALT RATE LB/SQ FT (KG/SQ M)
MILLED HMA, AGED NON-MILLED HMA, MILLED CONCRETE, NON-MILLED CONCRETE & TINED CONCRETE	0.05
AGGREGATE BASE	0.25
FOG COAT BETWEEN HMA LIFTS	0.025

**COMMITMENTS**

DISPOSAL OF EXCAVATED MATERIALS. ALL SUITABLE OR UNSUITABLE MATERIALS EXCAVATED DUE TO CONSTRUCTION OPERATIONS SHALL BE DISPOSED OF WITHIN THE LIMITS OF EXISTING RIGHT OF WAY. DISPOSAL OF EXCAVATED MATERIALS OFF THE RIGHT OF WAY SHALL NOT BE PERMITTED.

EXCAVATED MATERIALS SHALL BE DISPOSED OF AT LOCATIONS DIRECTED BY THE ENGINEER. ANY SUCH DISPOSAL SHALL NOT CREATE AN UNSIGHTLY OR OBJECTIONABLE APPEARANCE OR DETRACT FROM THE NATURAL TOPOGRAPHIC FEATURES WITHOUT WRITTEN PERMISSION FROM THE ENGINEER.

DATE: 3-28-14

PREPARED BY: Don Bonnil  
DISTRICT STUDIES & PLANS ENGINEER

EXAMINED BY: Harold Perry (and)  
DISTRICT CONSTRUCTION ENGINEER

Way L. Phillips  
DISTRICT MATERIALS ENGINEER

Bruce A. Huscher  
DISTRICT OPERATIONS ENGINEER

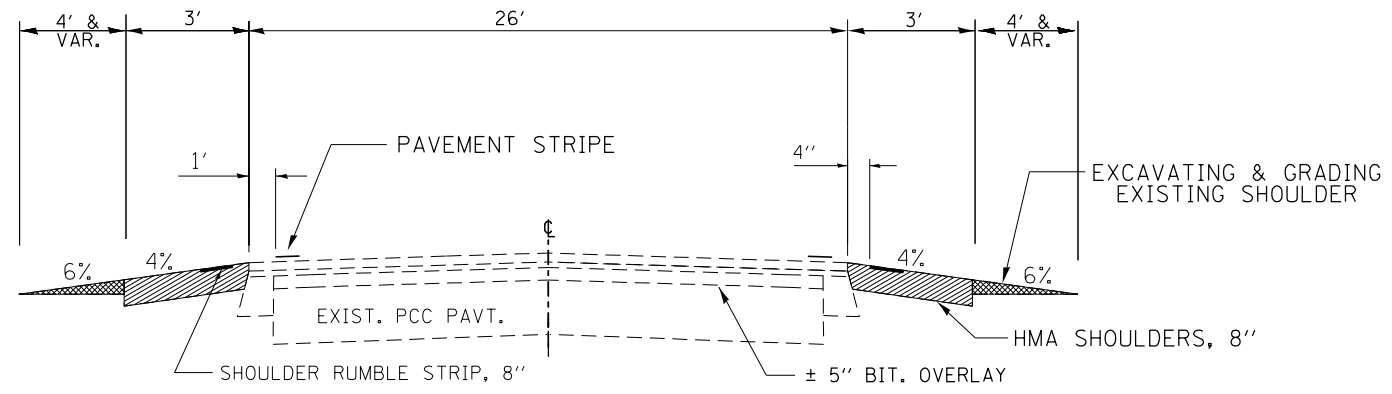
FILE NAME :	USER NAME : emthbd	DESIGNED - BDS	REVISED -	<b>STATE OF ILLINOIS DEPARTMENT OF TRANSPORTATION</b>	<b>GENERAL NOTES</b>	F.A.P. RTE.	SECTION	COUNTY	TOTAL SHEETS	SHEET NO.
c:\pv_work\pvidot\emthbd\0282611\0366879-shd-detailed.dgn	DRAWN - BDS	REVISÉ -	619			103RS-4&1	LASALLE	6	2	
PLOT SCALE = 100.0000 " / in.	CHECKED -	REVISÉ -	CONTRACT NO. 66B79							
PLOT DATE = 2/7/2014	DATE - NOVEMBER 2013	REVISÉ -	ILLINOIS FED. AID PROJECT							
		SCALE:		SHEET 1 OF 1 SHEETS STA. TO STA.						

CODE NO.	ITEM	UNIT	CONSTR. CODE
			FED / STATE 90% / 10% ROADWAY 0021 RURAL
20101400	NITROGEN FERTILIZER NUTRIENT	POUND	329
20101500	PHOSPHORUS FERTILIZER NUTRIENT	POUND	329
20101600	POTASSIUM FERTILIZER NUTRIENT	POUND	329
20200600	EXCAVATING AND GRADING EXISTING SHOULDER	UNIT	394
25000210	SEEDING, CLASS 2A	ACRE	3.7
25100115	MULCH, METHOD 2	ACRE	3.7
48203029	HOT-MIX ASPHALT SHOULDERS, 8"	SQ YD	13121
63500105	DELINEATORS	EACH	36
64200108	SHOULDER RUMBLE STRIPS, 8 INCH	FOOT	39752
67100100	MOBILIZATION	L SUM	1
70100500	TRAFFIC CONTROL AND PROTECTION, STANDARD 701326	L SUM	1
70103815	TRAFFIC CONTROL SURVEILLANCE	CAL DA	20
70300100	SHORT TERM PAVEMENT MARKING	FOOT	39752
70301000	WORK ZONE PAVEMENT MARKING REMOVAL	SQ FT	13251
* 72000100	SIGN PANEL, TYPE 1	SQ FT	8
* 73000100	WOOD SIGN SUPPORT	FOOT	28
* 78009004	MODIFIED URETHANE PAVEMENT MARKING - LINE 4"	FOOT	79504
X4060110	BITUMINOUS MATERIALS (PRIME COAT), SPECIAL	POUND	35777
Z0030850	TEMPORARY INFORMATION SIGNING	SQ FT	42

19

\* Specialty Items

FILE NAME =	USER NAME = ferguson	DESIGNED - BDS	REVISED -	<b>STATE OF ILLINOIS DEPARTMENT OF TRANSPORTATION</b>	<b>SUMMARY OF QUANTITIES</b>	F.A.P. RTE.	SECTION	COUNTY	TOTAL SHEETS	SHEET NO.
c:\pwork\pvidot\ferguson\10282611\06679-ahd-details.dgn	DRAWN - BDS	REVISED -	619			103RS-4&I	LASALLE	6	3	
PLOT SCALE = 1/8" = 1'-0"	CHECKED -	REVISED -	CONTRACT NO. 66B79							
PLOT DATE = 3/29/2014	DATE - NOVEMBER 2013	REVISED -	ILLINOIS FED. AID PROJECT							
					SCALE:	SHEET 1 OF 1 SHEETS STA. TO STA.				



**PROPOSED TYPICAL SECTION**

STA. 0+37.00 TO STA. 50+24.00  
 STA. 80+88.00 TO STA. 204+41.50  
 STA. 237+75.00 TO STA. 263+10.50

	HMA SHOULDERS BOTTOM 6"	HMA SHOULDERS TOP 2"
PG GRADE	PG64-22	PG64-22
DESIGN AIR VOIDS	4.0% @ N50	4.0% @ N50
MIXTURE COMPOSITION	IL 19.0 FG	IL 9.5 FG
FRICTION AGGREGATE		MIXTURE C
DENSITY CONTROL METHOD	CORES	CORES

FILE NAME =	USER NAME = fergusonse	DESIGNED - BDS	REVISED -
c:\pwwork\pwwork\fergusonse\d0282611\0366879-sht-details.dgn		DRAWN - BDS	REVISED -
PLOT SCALE = 100.0000' / in.		CHECKED -	REVISED -
PLOT DATE = 3/28/2014		DATE - NOVEMBER 2013	REVISED -

STATE OF ILLINOIS  
 DEPARTMENT OF TRANSPORTATION

**TYPICAL SECTIONS**

SCALE: SHEET 1 OF 1 SHEETS STA. TO STA.

F.A.P. RTE.	SECTION	COUNTY	TOTAL SHEETS	SHEET NO.
619	103RS-4&I	LASALLE	6	4
CONTRACT NO. 66B79			ILLINOIS FED. AID PROJECT	

IL 71 MAINLINE SCHEDULE							
		PVMT	SHLDR	HMA	EXC AND	SHLDR	BIT
		WIDTH	WIDTH	SHOULDER	GRADE	RUMBLE	PRIME
				8"	EX SHLD	STRIPS 8"	COAT
		LENGTH		SO YD	UNIT	FOOT	LBS
START PROJECT EAST SIDE IL 89							
START PROJECT	STA 0+37.00 IL 89 TO STA 50+24.00	4987	26	6	3325	100	9974
OMISSION	OMISSION STA 50+24.00 TO STA 80+88.00	3064					
	STA 80+88.00 TO STA 204+41.50*	12353.5	26	6	8106	243	24707
OMISSION	OMISSION STA 204+41.5 TO STA 237+75	3333.5					22236
	STA 237+75 TO STA 263+10.5 E 275th Rd	2535.5	26	6	1690	51	5071
GRAND TOTAL		26273.5			13121	394	39752

\*SHOULDER QUANTITIES ADJUSTED TO EXCLUDE GUARDRAIL SECTION IN ADVANCE OF STATION 204+41.5

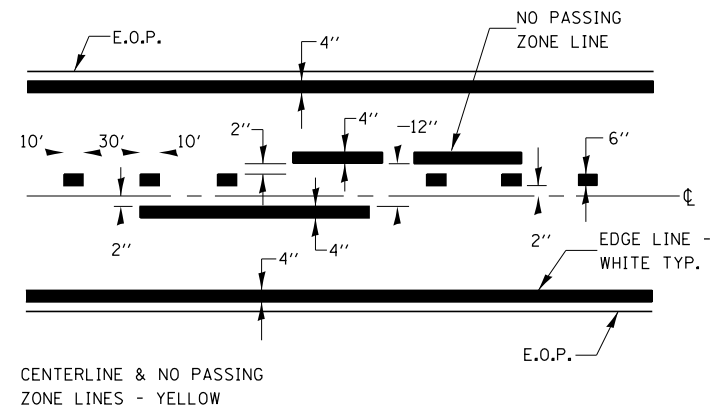
IL 71 LANDSCAPING SCHEDULE						
		SEEDING	MULCH	NITROGEN	PHOSPHORUS	POTASSIUM
		CLASS 2A	METH. 2			
		ACRE	ACRE	POUND	POUND	POUND
START PROJECT EAST SIDE IL 89						
START PROJECT	STA 0+37.00 IL 89 TO STA 50+24.00	4987	0.9	0.9	82	82
OMISSION	OMISSION STA 50+24.00 TO STA 80+88.00	3064				
	STA 80+88.00 TO STA 204+41.50*	12353.5	2.3	2.3	204	204
OMISSION	OMISSION STA 204+41.5 TO STA 237+75	3333.5				
	STA 237+75 TO STA 263+10.5 E 275th Rd	2535.5	0.5	0.5	42	42
GRAND TOTAL		26273.5	3.7	3.7	329	329

\*SHOULDER QUANTITIES ADJUSTED TO EXCLUDE GUARDRAIL SECTION IN ADVANCE OF STATION 204+41.5

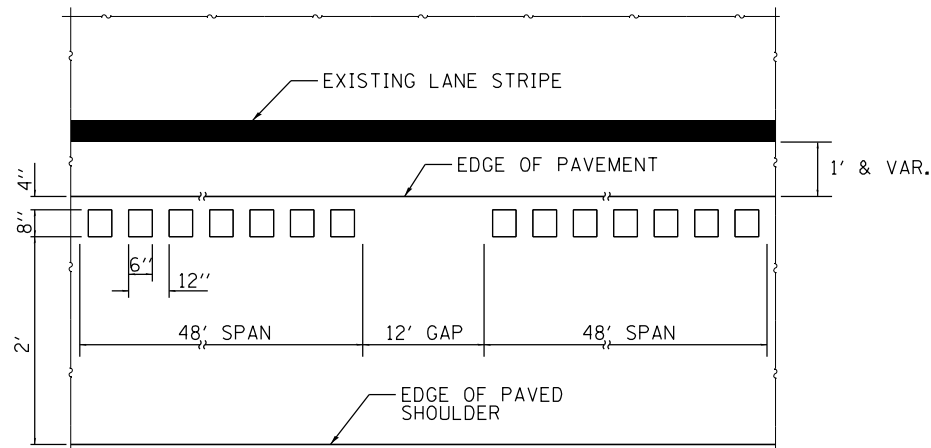
IL 71 SIGN SCHEDULE					
		SIGN	WOOD SIGN		
		PANEL	SUPPORT		
LOCATION	SIGN	SIZE	SQ FT	FOOT	
STATION 185+70 RIGHT	ONE-DIRECTION LARGE ARROW (W1-6)	48" X 24"	8	28	
		TOTAL	8	28	

IL 71 PAVEMENT MARKING SCHEDULE				
		MODIFIED	SHORT TERM	WORK ZONE
		URETHANE	PAVEMENT	MARKING
		4" LINE	MARKING	REMOVAL
		FOOT	FOOT	SQ FT
START PROJECT EAST SIDE IL 89				
START PROJECT	STA 0+37.00 IL 89 TO STA 50+24.00	4987	19948	9974
OMISSION	OMISSION STA 50+24.00 TO STA 80+88.00	3064		3325
	STA 80+88.00 TO STA 204+41.50*	12353.5	49414	24707
OMISSION	OMISSION STA 204+41.5 TO STA 237+75	3333.5		8236
	STA 237+75 TO STA 263+10.5 E 275th Rd	2535.5	10142	5071
GRAND TOTAL		26273.5	79504	39752

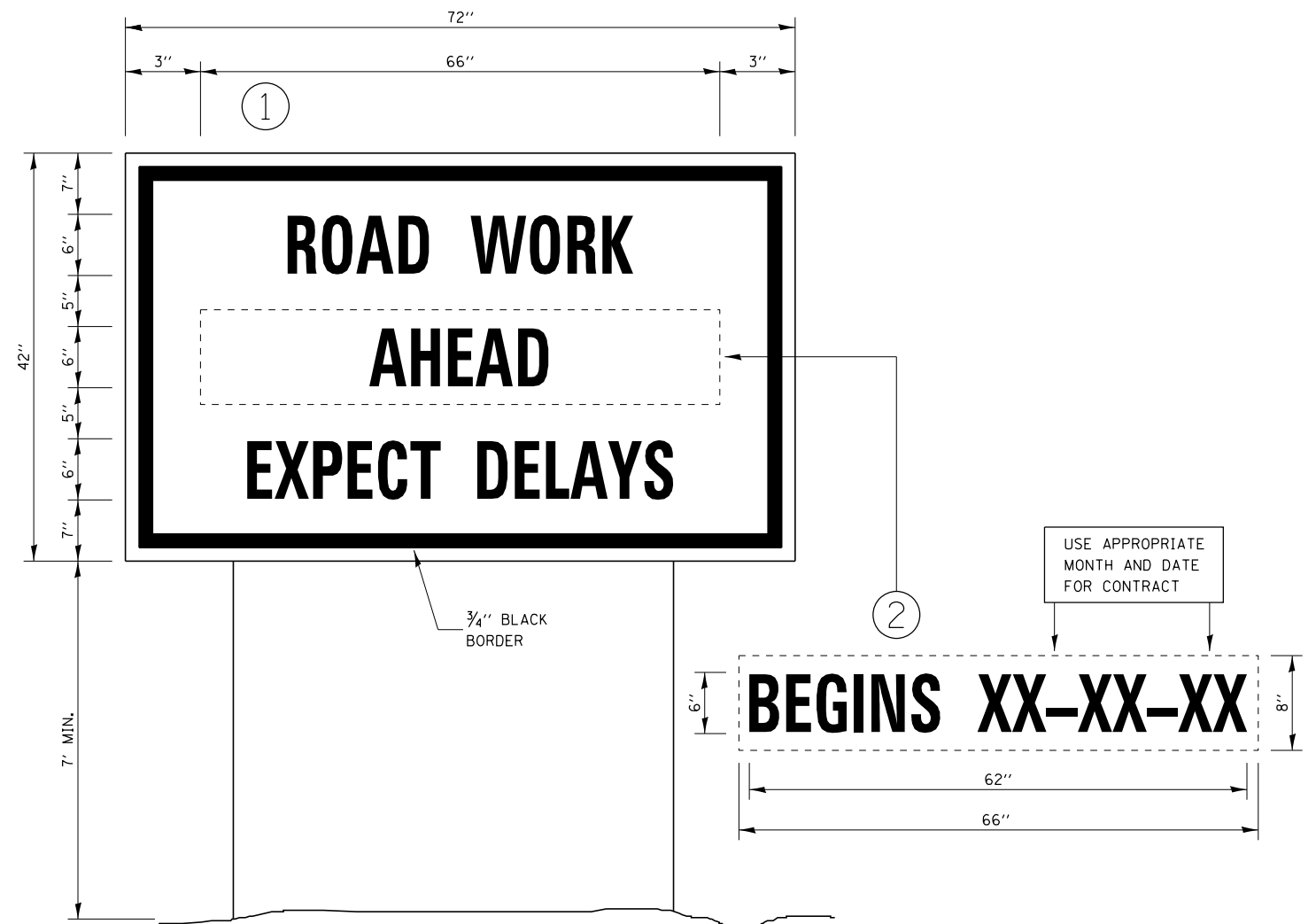
IL 71 DELINEATOR SCHEDULE			
		DELINEATOR	DELINEATORS
		SPACING	EACH
LOCATION	LENGTH	FOOT	
STA 176+10 TO STA 180+10 LEFT & RIGHT	400	200	6
STA 182+10 TO STA 193+10 LEFT & RIGHT	1100	100	24
STA 195+10 TO STA 199+10 LEFT & RIGHT	400	200	6
		TOTAL	36



**PAVEMENT MARKING**



**SHOULDER RUMBLE STRIP TYPICAL PLAN**



**TEMPORARY INFORMATION SIGNING**

**NOTES:**

- USE 6" D BLACK LETTERING ON FLOURESENT ORANGE BACKGROUND.
- ERECT SIGNS AT LOCATIONS IN ADVANCE OF THE "ROAD CONSTRUCTION AHEAD" SIGNS AS DIRECTED BY THE ENGINEER.
- ERECT SIGN ① WITH INSTALLED PANEL ② A MINIMUM OF ONE WEEK PRIOR TO THE START OF THE LANE CLOSURE.
- REMOVE PANEL ② ON THAT DATE.
- SEE SPECIAL PROVISION "TEMPORARY INFORMATION SIGNING" FOR ADDITIONAL INFORMATION.
- WILL BE PAID FOR PER SQ FT AS "TEMPORARY INFORMATION SIGNING". EACH SIGN = 21 SQ FT AND THE DATE PANEL ② WILL NOT BE MEASURED SEPARATELY FOR PAYMENT.

FILE NAME =	USER NAME = fergusonse	DESIGNED - BDS	REVISED -
et:\pw_work\p1dot\fergusonse\d0282611\0366879-sht-details.dgn		DRAWN - BDS	REVISED -
	PLOT SCALE = 100.0000' / 1in.	CHECKED -	REVISED -
	PLOT DATE = 3/28/2014	DATE - NOVEMBER 2013	REVISED -

**STATE OF ILLINOIS  
DEPARTMENT OF TRANSPORTATION**

**DETAILS**

SCALE: SHEET 1 OF 1 SHEETS STA. TO STA.

F.A.P. RTE.	SECTION	COUNTY	TOTAL SHEETS	SHEET NO.
619	103RS-4&I	LASALLE	6	6
CONTRACT NO. 66B79			ILLINOIS FED. AID PROJECT	