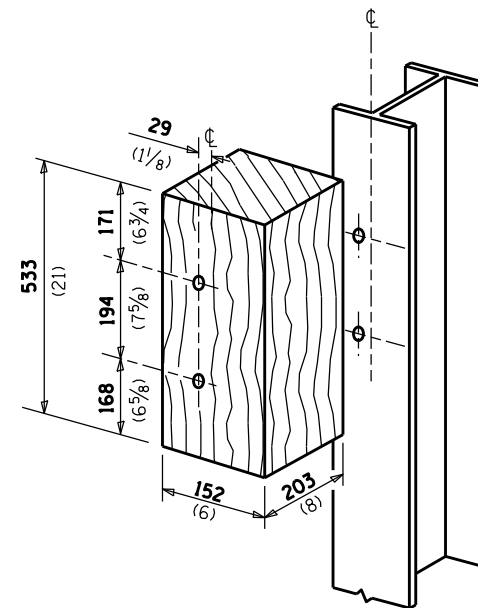


SECTION C-C

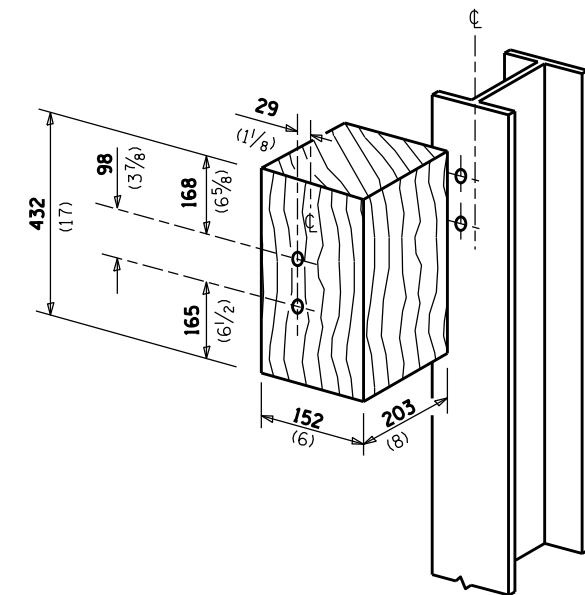
Bolts (A307) with washers and self locking nut or nut and jam nut. Top bolt **22** ($\frac{7}{8}$) by **229** (9). Bottom bolt **22** ($\frac{7}{8}$) by **127** (5) for curb mount or **22** ($\frac{7}{8}$) by **179** (7) for side mount.

* Bolt **22x127** ($\frac{7}{8}$ x5)
 ** Bolts **22x31** ($\frac{7}{8}$ x2)

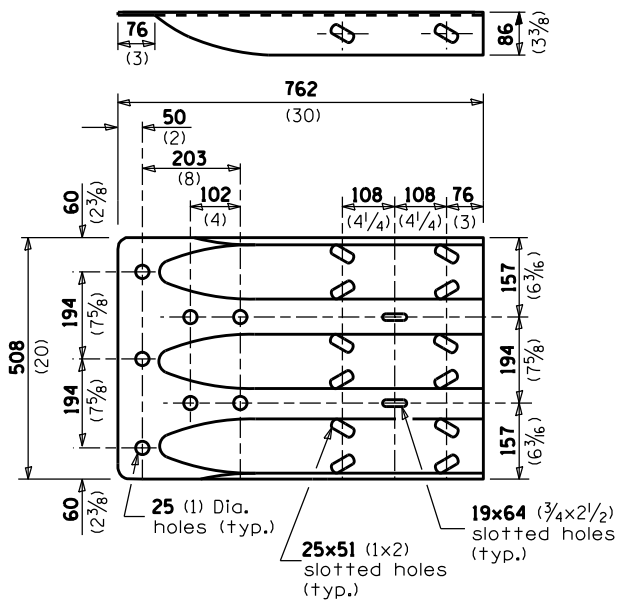
Note:
 Side mounted rail similar as to connection details.



POSTS 1-11 WOOD BLOCKOUT DETAIL



POST 12 WOOD BLOCKOUT DETAIL



MODIFIED THRIE BEAM END SHOE DETAIL

FILE NAME = *FILE*	USER NAME = *USER*	DESIGNED -	REVISED -	STATE OF ILLINOIS DEPARTMENT OF TRANSPORTATION	PRE-MGS EFFECTIVE 4-1-06 TRAFFIC BARRIER TERMINAL, TYPE 6A STANDARD 631032-02	F.A. RTE.	SECTION	COUNTY	TOTAL SHEETS	SHEET NO.	
		DRAWN -	REVISED -		SCALE: _____	SHEET NO. ___ OF ___ SHEETS	VAR.		VAR.	43	37
		CHECKED -	REVISED -			STA. _____ TO STA. _____					
		DATE -	REVISED -				FED. ROAD DIST. NO.	ILLINOIS	FED. AID PROJECT	CONTRACT NO. 66015	

• D-3 HIGHWAY DAMAGE REPAIR 2015

Sheet 2 of 3