

F.A.I. RTE.	SECTION	COUNTY	TOTAL SHEETS	SHEET NO.
57	HMA SURFACE REPAIR	IROQUOIS	9	1
ILLINOIS CONTRACT NO. 66D71				

**STATE OF ILLINOIS
DEPARTMENT OF TRANSPORTATION
DIVISION OF HIGHWAYS**

**PROPOSED
HIGHWAY PLANS**

**F.A.I. ROUTE 57 (I-57)
SECTION D3 HMA SURFACE REPAIR**

**INTERMITTENT REMOVAL AND REPLACEMENT
OF DETERIORATED HOT-MIX ASPHALT SURFACE
FORD & IROQUOIS COUNTY**

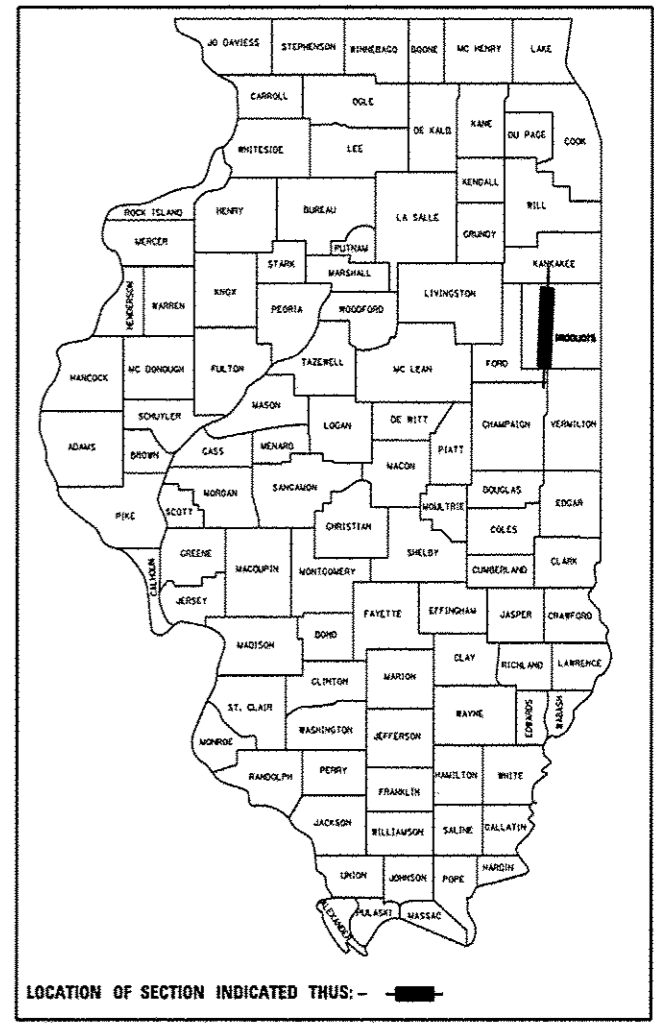
INDEX OF SHEETS

1. COVER SHEET
2. GENERAL NOTES
- 3-4. SUMMARY OF QUANTITIES
5. TYPICAL SECTIONS
- 6-7. SCHEDULES
8. TRAFFIC CONTROL AND PROTECTION, STANDARD 701400 (SPECIAL)
9. TYPICAL PAVEMENT MARKING

STANDARDS

- 701101-04 OFF-ROAD OPERATIONS MULTILANE, 15' (4.5 m) TO 24" (600 mm) FROM PAVEMENT EDGE
 - 701406-08 LANE CLOSURE, FREEWAY/EXPRESSWAY, DAY OPERATIONS ONLY
 - 701411-08 LANE CLOSURE, MULTILANE, AT ENTRANCE OR EXIT RAMP FOR SPEEDS ≥ 45 MPH
 - 701426-06 LANE CLOSURE, MULTILANE INTERMITTENT OR MOVING OPERATION, FOR SPEEDS ≥ 45 MPH
 - 701428 TRAFFIC CONTROL SETUP AND REMOVAL FREEWAY/EXPRESSWAY
 - 701901-03 TRAFFIC CONTROL DEVICES
 - 781001-03 TYPICAL APPLICATIONS RAISED REFLECTIVE PAVEMENT MARKERS
- 701400-07

D-93-093-14



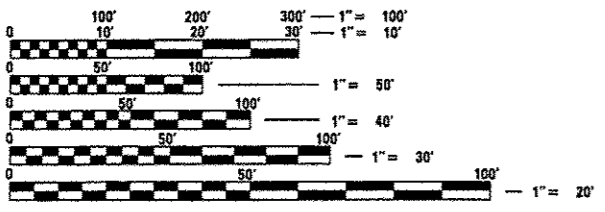
RURAL	
INTERSTATE	
FAI 57 (I-57)	
2013	
ADT	15350
P.V.	60.51%
S.U.	3.51%
M.U.	35.98%

STATE OF ILLINOIS
DEPARTMENT OF TRANSPORTATION
DIVISION OF HIGHWAYS

SUBMITTED April 16, 2014
Paul Loete, D.B.
DEPUTY DIRECTOR OF HIGHWAYS, REGION ENGINEER

May 9, 2014
John D. Baranzelli, P.E.
ENGINEER OF DESIGN AND ENVIRONMENT

May 9, 2014
Omer Osman, P.E.
DIRECTOR OF HIGHWAYS, CHIEF ENGINEER



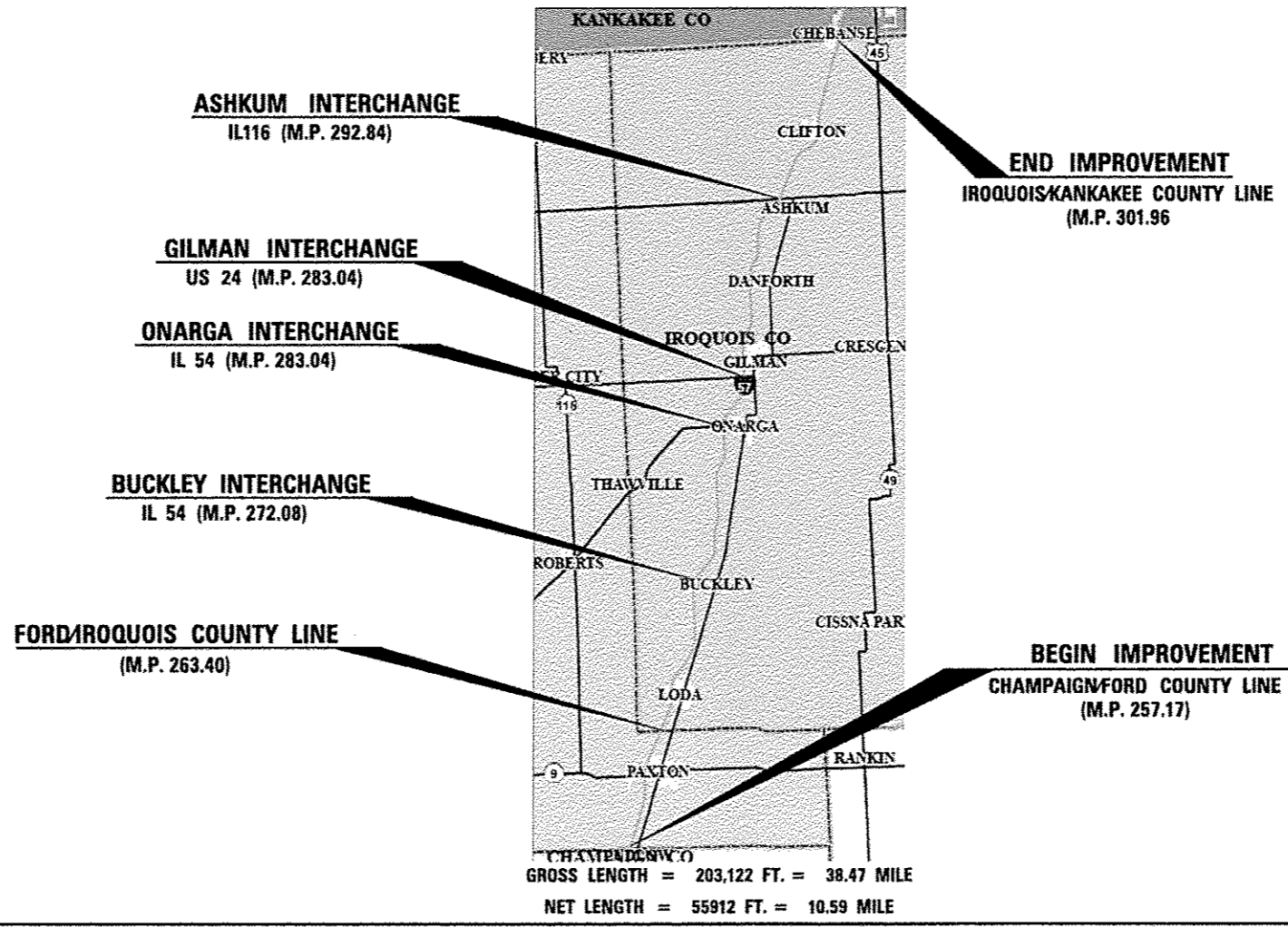
FULL SIZE PLANS HAVE BEEN PREPARED USING STANDARD ENGINEERING SCALES. REDUCED SIZED PLANS WILL NOT CONFORM TO STANDARD SCALES. IN MAKING MEASUREMENTS ON REDUCED PLANS, THE ABOVE SCALES MAY BE USED.

J.U.L.I.E.
JOINT UTILITY LOCATION INFORMATION FOR EXCAVATION
1-800-892-0123
OR 811

PROJECT ENGINEER: JOE KANNEL P.E.
UNIT CHIEF: RON WOODSHANK

CONTRACT NO. 66D71

C-93-093-14



**PRINTED BY THE AUTHORITY
OF THE STATE OF ILLINOIS**