

INDEX OF SHEETS

1. COVER SHEET
2. GENERAL NOTES
3. SUMMARY OF QUANTITIES
4. TYPICAL SECTIONS
5. SCHEDULES
6. DETAILS

STANDARDS

- 000001-06 STANDARD SYMBOLS, ABBREVIATIONS AND PATTERNS
- 001006 DECIMAL OF AN INCH AND OF A FOOT
- 701306-03 LANE CLOSURE, 2L, 2W, SLOW MOVING OPERATIONS DAY ONLY, FOR SPEEDS ≥45 MPH
- 701901-03 TRAFFIC CONTROL DEVICES
- 780001-04 TYPICAL PAVEMENT MARKINGS
- 781001-03 TYPICAL APPLICATIONS RAISED REFLECTIVE PAVEMENT MARKINGS

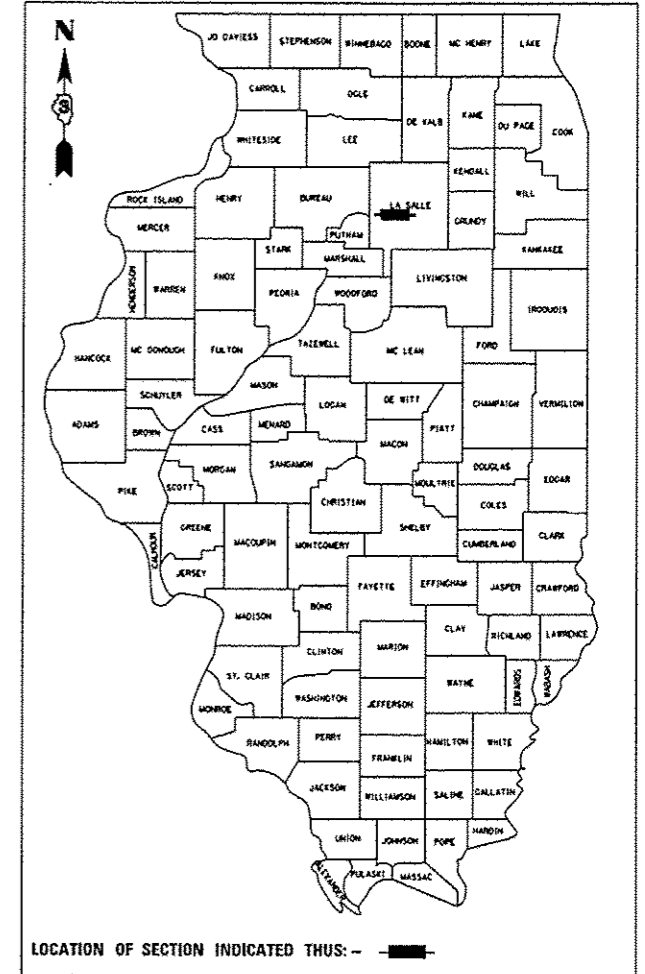
STATE OF ILLINOIS
DEPARTMENT OF TRANSPORTATION
DIVISION OF HIGHWAYS
**PROPOSED
HIGHWAY PLANS**

FAP ROUTE 627 (IL 71)
SECTION (M,I-1,D)RS-4&I-1
PROJECT *ACHSIP-0627(014)*
SAFETY IMPROVEMENT
LASALLE COUNTY

C-93-111-14

F.A.P. RTE.	SECTION	COUNTY	TOTAL SHEETS	SHEET NO.
627	(M,I-1,D)RS-4&I-1	BUREAU	6	1
		ILLINOIS	CONTRACT NO. 66082	

D-93-059-14



FUNCTIONAL CLASSIFICATION
RURAL ARTERIAL

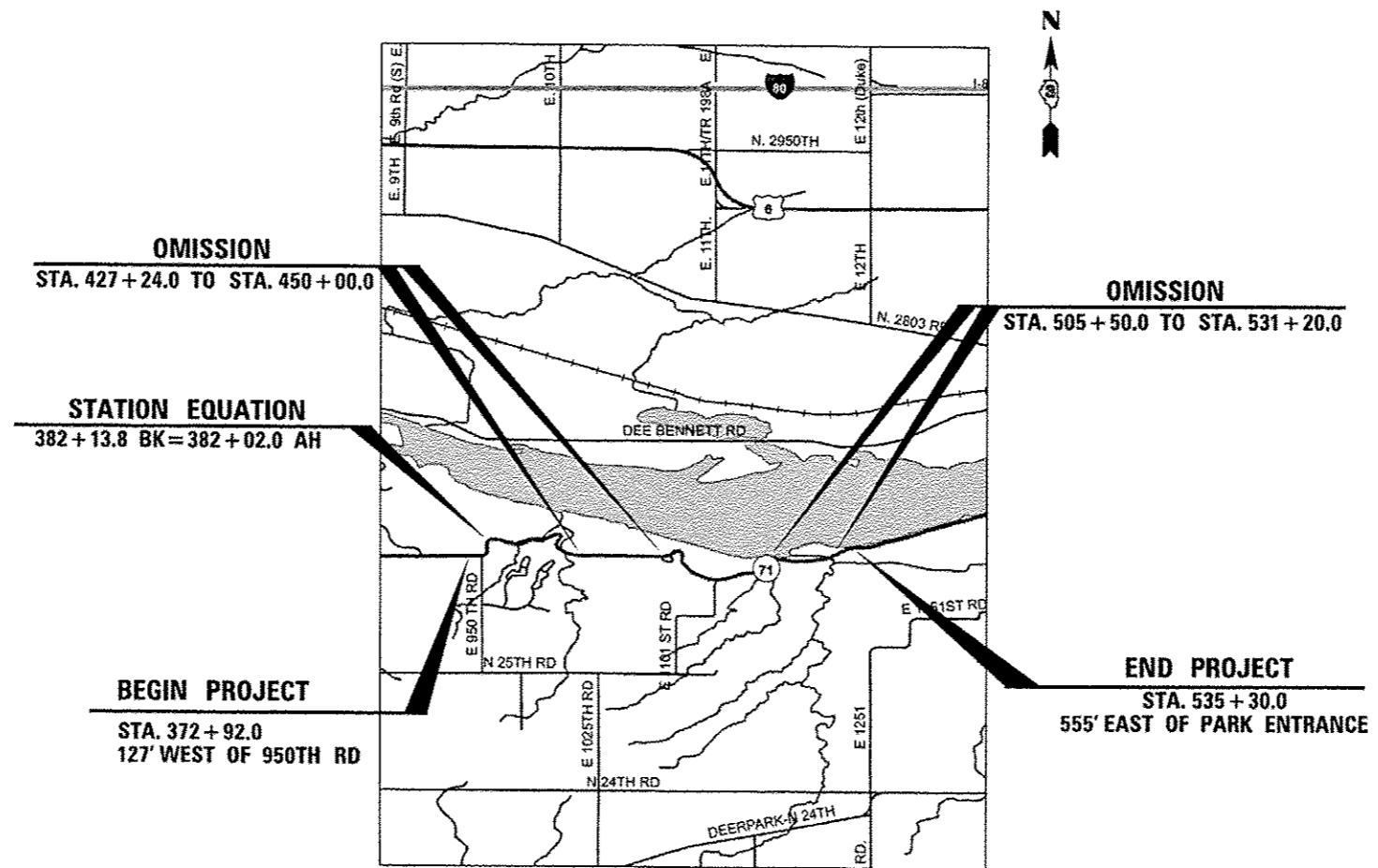
2014 ADT = 1800

P.V. = 97.66% S.U. = 1.67% M.U. = 0.67%

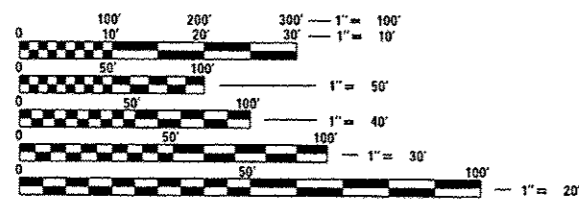
STATE OF ILLINOIS
DEPARTMENT OF TRANSPORTATION
DIVISION OF HIGHWAYS

SUBMITTED 3-28 2014
Paul Laska, P.E.
DEPUTY DIRECTOR OF HIGHWAYS, REGION ENGINEER
May 9 2014
John D. Baranzelli, P.E.
ENGINEER OF DESIGN AND ENVIRONMENT
May 9 2014
Omer Osman, P.E.
DIRECTOR OF HIGHWAYS, CHIEF ENGINEER

PRINTED BY THE AUTHORITY
OF THE STATE OF ILLINOIS



GROSS LENGTH = 16,249.8 FT. = 3.08 MILES
NET LENGTH = 11,403.8 FT. = 2.16 MILES



FULL SIZE PLANS HAVE BEEN PREPARED USING STANDARD ENGINEERING SCALES. REDUCED SIZED PLANS WILL NOT CONFORM TO STANDARD SCALES. IN MAKING MEASUREMENTS ON REDUCED PLANS, THE ABOVE SCALES MAY BE USED.

J.U.L.I.E.
JOINT UTILITY LOCATION INFORMATION FOR EXCAVATION
1-800-892-0123
OR 811

DISTRICT 3 NO. (815) 434-6131
PROJECT ENGINEER: JOE KANNEL, P.E.
UNIT CHIEF: SCOTT A. FERGUSON
CONTRACT NO. 66D82