

INDEX OF SHEETS

1. COVER SHEET
2. GENERAL NOTES
3. SUMMARY OF QUANTITIES
4. TYPICAL SECTIONS
5. SCHEDULES
- 6-7. DETAILS

STANDARDS

- 000001-06 STANDARD SYMBOLS, ABBREVIATIONS AND PATTERNS
- 001006 DECIMAL OF AN INCH AND OF A FOOT
- 635001-01 DELINEATORS
- 642006 SHOULDER RUMBLE STRIPS, 8 IN.
- 701306-03 LANE CLOSURE, 2L2W, SLOW MOVING OPERATIONS DAY ONLY, FOR SPEEDS >45 MPH
- 701326-04 LANE CLOSURE, 2L2W, PAVEMENT WIDENING, FOR SPEEDS >45 MPH
- 701901-03 TRAFFIC CONTROL DEVICES
- 720011-01 METAL POSTS FOR SIGNS, MARKERS, & DELINEATORS
- 780001-04 TYPICAL PAVEMENT MARKINGS
- 781001-03 TYPICAL APPLICATIONS RAISED REFLECTIVE PAVEMENT MARKERS

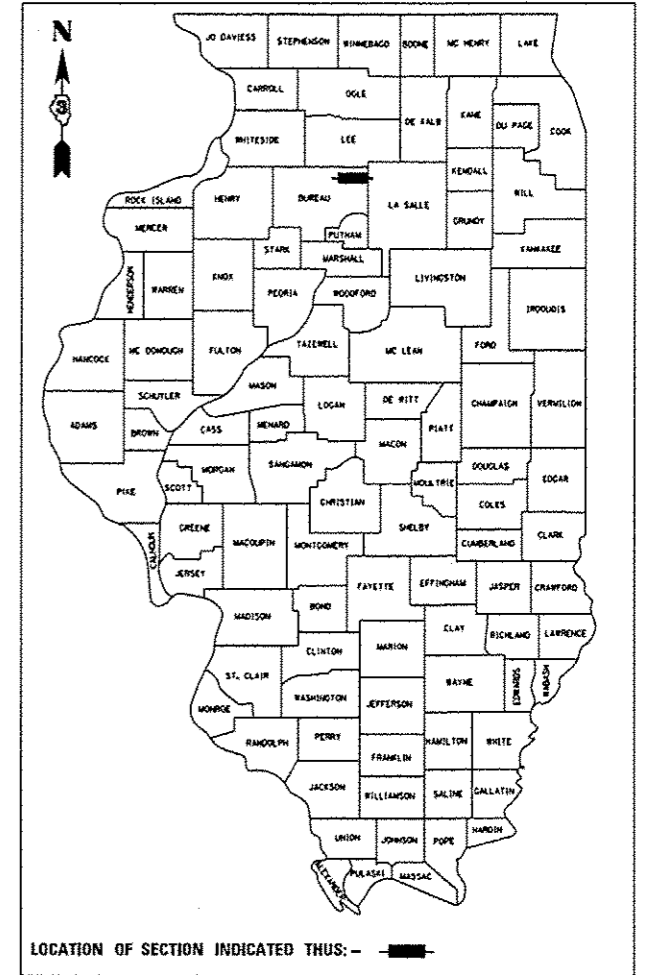
STATE OF ILLINOIS
DEPARTMENT OF TRANSPORTATION
DIVISION OF HIGHWAYS
**PROPOSED
HIGHWAY PLANS**

FAP ROUTE 587 (US 34)
SECTION (22)RS-6&I-2
PROJECT *ACHSIP-0587(020)*
SAFETY IMPROVEMENT
BUREAU COUNTY

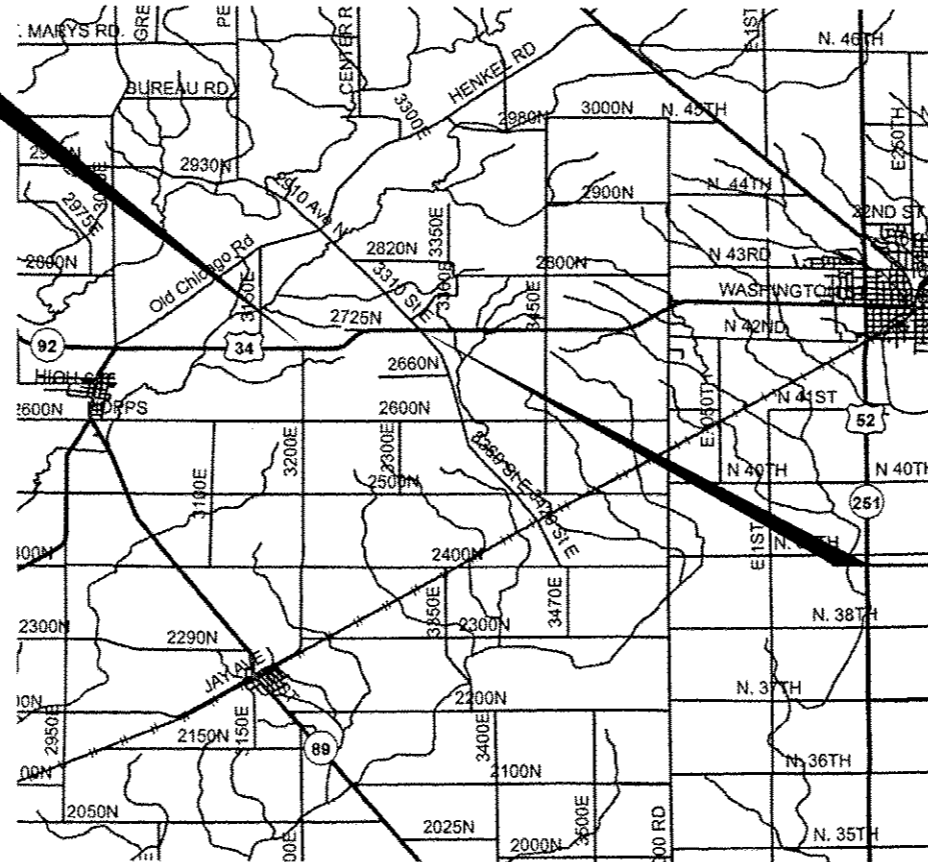
C-93-112-14

F.A.P. RTE.	SECTION	COUNTY	TOTAL SHEETS	SHEET NO.
587	(22)RS-6&I-2	BUREAU	7	1
		ILLINOIS	CONTRACT NO. 66D83	

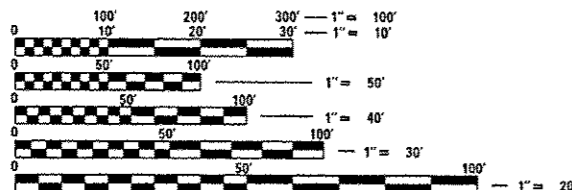
D-93-060-14



BEGIN PROJECT
STA. 907 + 50.0
3200E RD EAST RADIUS RETURN



END PROJECT
STA. 976 + 15.0
3320E RD WEST RADIUS RETURN



FULL SIZE PLANS HAVE BEEN PREPARED USING STANDARD ENGINEERING SCALES. REDUCED SIZED PLANS WILL NOT CONFORM TO STANDARD SCALES. IN MAKING MEASUREMENTS ON REDUCED PLANS, THE ABOVE SCALES MAY BE USED.

J.U.L.I.E.
JOINT UTILITY LOCATION INFORMATION FOR EXCAVATION
1-800-892-0123
OR 811

DISTRICT 3 NO. (815) 434-6131
PROJECT ENGINEER: JOE KANNEL, P.E.
UNIT CHIEF: SCOTT A. FERGUSON
CONTRACT NO. 66D83

GROSS LENGTH = 6,865.0 FT. = 1.30 MILES
NET LENGTH = 6,865.0 FT. = 1.30 MILES

FUNCTIONAL CLASSIFICATION
RURAL ARTERIAL
2014 ADT = 2000
P.V. = 76.75% S.U. = 17.75% M.U. = 5.50%

STATE OF ILLINOIS
DEPARTMENT OF TRANSPORTATION
DIVISION OF HIGHWAYS

SUBMITTED Mar 28 20 14
Paul Leste o.s.
DEPUTY DIRECTOR OF HIGHWAYS, REGION ENGINEER

May 9 20 14
John D. Baranzelli, P.E. jr
ENGINEER OF DESIGN AND ENVIRONMENT

May 9 20 14
Osman Osman, P.E. jr
DIRECTOR OF HIGHWAYS, CHIEF ENGINEER

**PRINTED BY THE AUTHORITY
OF THE STATE OF ILLINOIS**