

F.A.P. RTE.	SECTION	COUNTY	TOTAL SHEETS	SHEET NO.
41	(14)I-1	LIVINGSTON/ KANKAKEE	6	1
		ILLINOIS	CONTRACT NO. 66D84	

INDEX OF SHEETS

1. COVER SHEET
2. GENERAL NOTES
3. SUMMARY OF QUANTITIES
4. TYPICAL SECTIONS
5. SCHEDULES
6. DETAILS

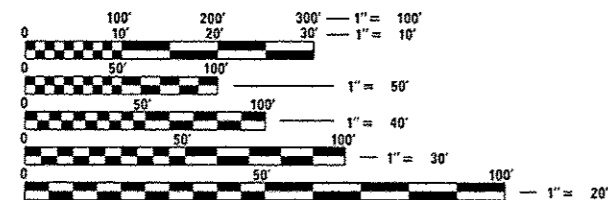
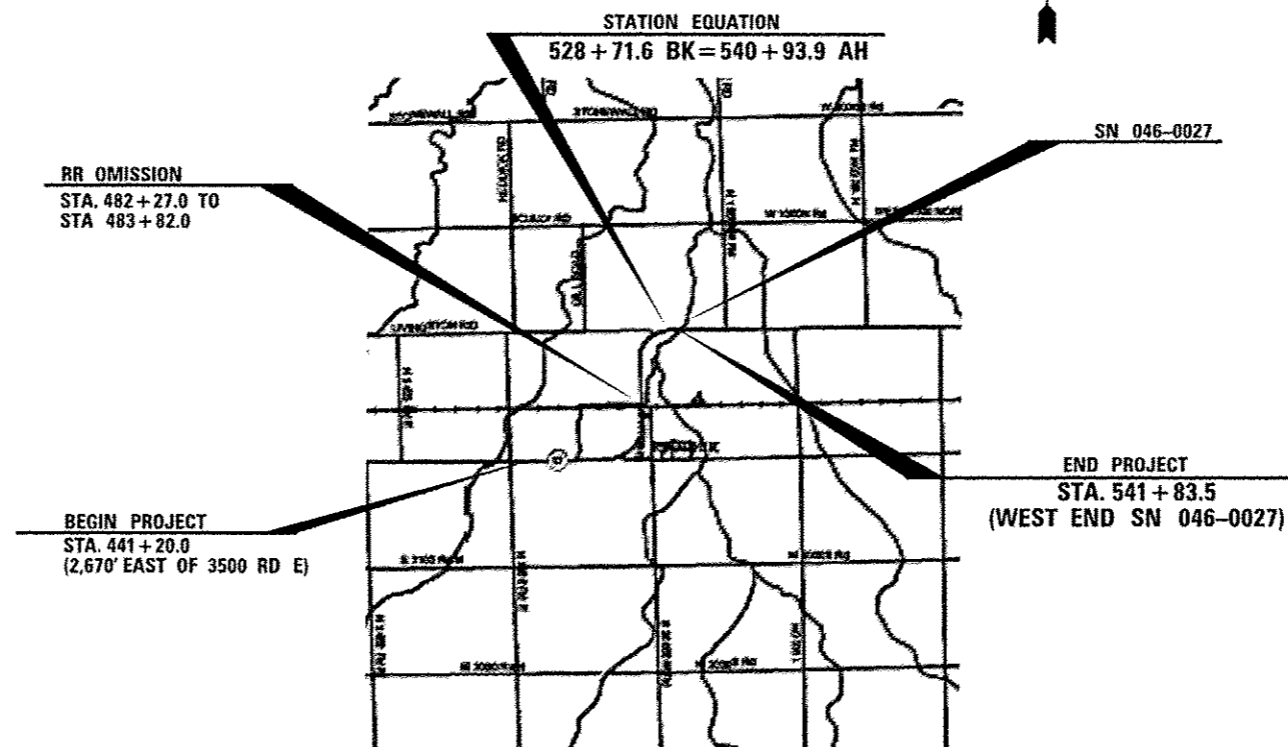
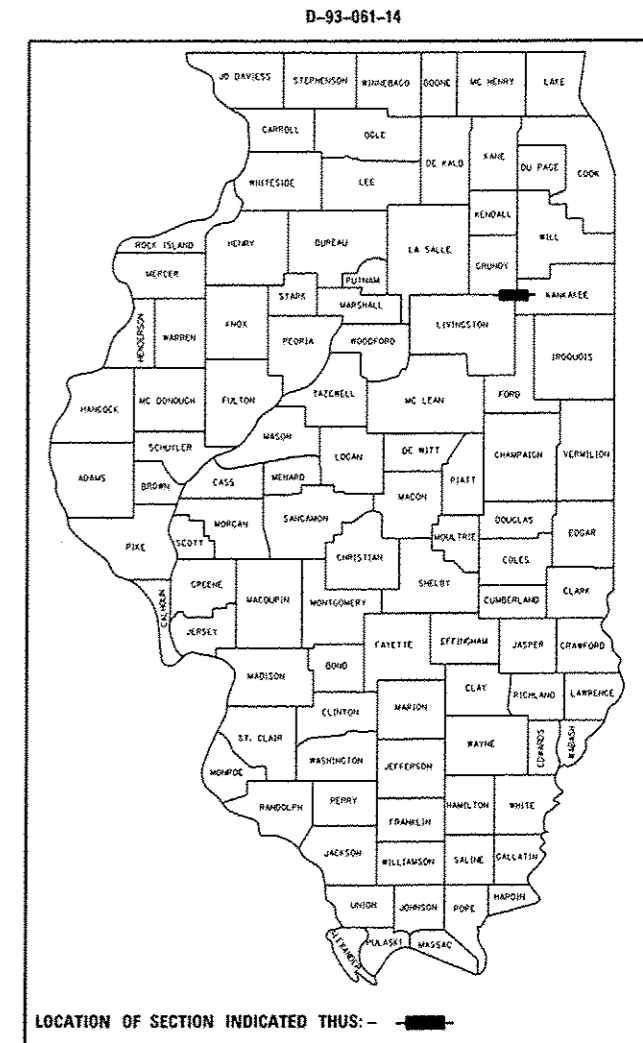
STANDARDS

- | | |
|-----------|---|
| 000001-06 | STANDARD SYMBOLS, ABBREVIATIONS AND PATTERNS |
| 001006 | DECIMAL OF AN INCH AND OF A FOOT |
| 635001-01 | DELINEATORS |
| 701326-04 | LANE CLOSURE, 2L2W, PAVEMENT WIDENING, FOR SPEEDS >45 MPH |
| 701901-03 | TRAFFIC CONTROL DEVICES |
| 720011-01 | METAL POSTS FOR SIGNS, MARKERS, & DELINEATORS |

STATE OF ILLINOIS
DEPARTMENT OF TRANSPORTATION
DIVISION OF HIGHWAYS
**PROPOSED
HIGHWAY PLANS**

FAP ROUTE 41 (IL 17)
SECTION (14)I-1
PROJECT ACHSIP-0041(136)
ADDING SHOULDERS
LIVINGSTON COUNTY

C-93-113-14



FULL SIZE PLANS HAVE BEEN PREPARED USING STANDARD ENGINEERING SCALES. REDUCED SIZED PLANS WILL NOT CONFORM TO STANDARD SCALES. IN MAKING MEASUREMENTS ON REDUCED PLANS, THE ABOVE SCALES MAY BE USED.

J.U.L.I.E.
JOINT UTILITY LOCATION INFORMATION FOR EXCAVATION
1-800-892-0123
OR 811

DISTRICT 3 NO. (815) 434-6131

PROJECT ENGINEER: JOE KANNEL P.E.
UNIT CHIEF: SCOTT A. FERGUSON

CONTRACT NO. 66D84

GROSS LENGTH = 8,841.2 FT. = 1.67 MILES
NET LENGTH = 8,686.2 FT. = 1.65 MILES

STATE OF ILLINOIS
DEPARTMENT OF TRANSPORTATION
DIVISION OF HIGHWAYS

SUBMITTED Nov 28 20 14
Paul Costello
DEPUTY DIRECTOR OF HIGHWAYS, REGION ENGINEER

May 9 20 14
John D. Baronzelli P.E.
ENGINEER OF DESIGN AND ENVIRONMENT

May 9 20 14
Chris Osman P.E.
DIRECTOR OF HIGHWAYS, CHIEF ENGINEER

PRINTED BY THE AUTHORITY
OF THE STATE OF ILLINOIS