

1. COVER SHEET
2. GENERAL NOTES
3. SUMMARY OF QUANTITIES
4. TYPICAL SECTIONS
5. SCHEDULES
6. DETAILS

STANDARDS

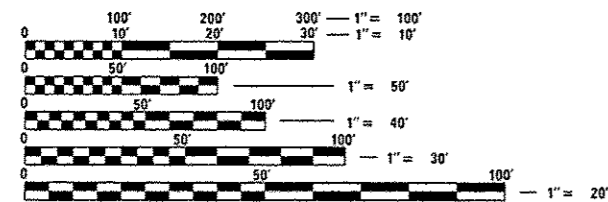
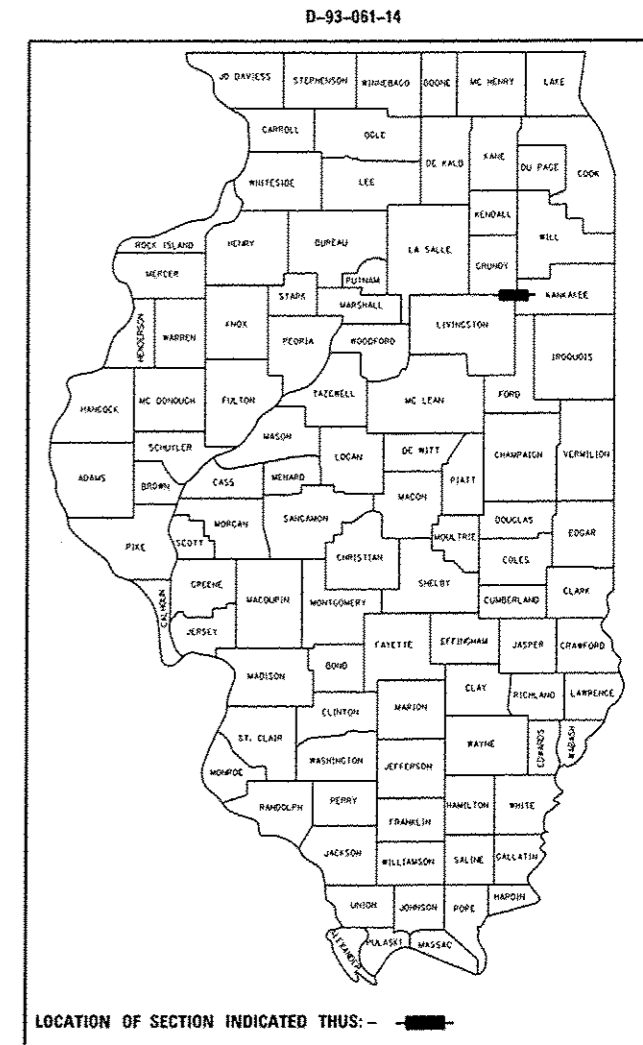
- | | |
|-----------|---|
| 000001-06 | STANDARD SYMBOLS, ABBREVIATIONS AND PATTERNS |
| 001006 | DECIMAL OF AN INCH AND OF A FOOT |
| 635001-01 | DELINEATORS |
| 701326-04 | LANE CLOSURE, 2L2W, PAVEMENT WIDENING, FOR SPEEDS >45 MPH |
| 701901-03 | TRAFFIC CONTROL DEVICES |
| 720011-01 | METAL POSTS FOR SIGNS, MARKERS, & DELINEATORS |

STATE OF ILLINOIS
DEPARTMENT OF TRANSPORTATION
DIVISION OF HIGHWAYS
PROPOSED
HIGHWAY PLANS

FAP ROUTE 41 (IL 17)
SECTION (14)I-1
PROJECT ACHSIP-0041(136)
ADDING SHOULDERS
LIVINGSTON COUNTY

C-93-113-14

F.A.P. RTE.	SECTION	COUNTY	TOTAL SHEETS	SHEET NO.
41	(14)I-1	LIVINGSTON/KANKAKEE	6	1
ILLINOIS			CONTRACT NO. 66D84	



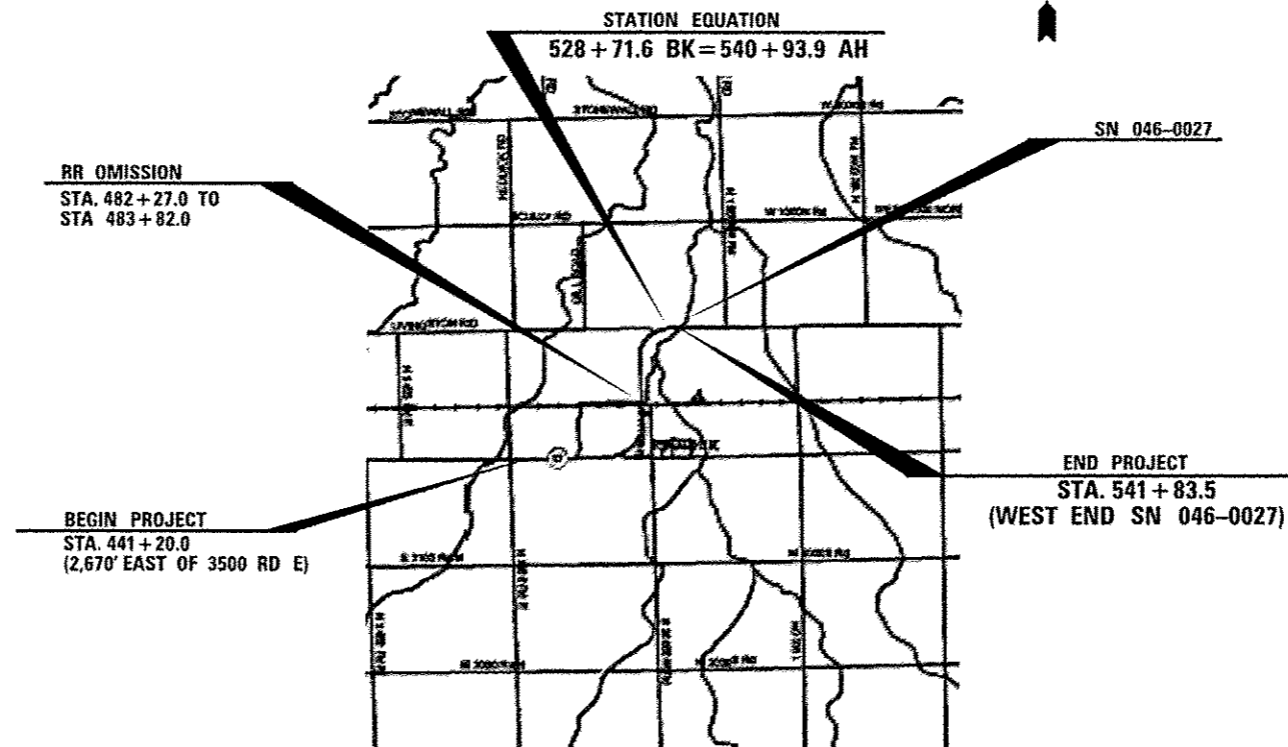
FULL SIZE PLANS HAVE BEEN PREPARED USING STANDARD ENGINEERING SCALES. REDUCED SIZED PLANS WILL NOT CONFORM TO STANDARD SCALES. IN MAKING MEASUREMENTS ON REDUCED PLANS, THE ABOVE SCALES MAY BE USED.

J.U.L.I.E.
 JOINT UTILITY LOCATION INFORMATION FOR EXCAVATION
 1-800-892-0123
 OR 811

DISTRICT 3 NO. (815) 434-6131

PROJECT ENGINEER: JOE KANNEL P.E.
 UNIT CHIEF: SCOTT A. FERGUSON

CONTRACT NO. 66D84



GROSS LENGTH = 8,841.2 FT. = 1.67 MILES
 NET LENGTH = 8,686.2 FT. = 1.65 MILES

STATE OF ILLINOIS
 DEPARTMENT OF TRANSPORTATION
 DIVISION OF HIGHWAYS

SUBMITTED Nov 28 20 14
Paul Costello
 DEPUTY DIRECTOR OF HIGHWAYS, REGION ENGINEER

May 9 20 14
John D. Baronzelli P.E.
 ENGINEER OF DESIGN AND ENVIRONMENT

May 9 20 14
Chris Osman P.E.
 DIRECTOR OF HIGHWAYS, CHIEF ENGINEER

**PRINTED BY THE AUTHORITY
 OF THE STATE OF ILLINOIS**

GENERAL NOTES

PLAN DIMENSIONS RELATIVE TO THE EXISTING ROADWAY HAVE BEEN TAKEN FROM EXISTING PLANS AND ARE SUBJECT TO NOMINAL CONSTRUCTION VARIATIONS. IT SHALL BE THE CONTRACTOR'S RESPONSIBILITY TO MAKE NECESSARY ADJUSTMENTS PRIOR TO CONSTRUCTION OR ORDERING OF MATERIALS. SUCH VARIATIONS SHALL NOT BE CAUSE FOR ADDITIONAL COMPENSATION FOR A CHANGE IN THE SCOPE OF THE WORK. HOWEVER, THE CONTRACTOR WILL BE PAID FOR THE QUANTITY FURNISHED AT THE UNIT PRICE BID FOR THE WORK.

ANY REFERENCE TO A STANDARD IN THESE PLANS SHALL BE INTERPRETED TO MEAN THE EDITION AS INDICATED BY THE SUBNUMBER SHOWN IN THE LIST OF STANDARDS OR THE COPY INCLUDED IN THESE PLANS.

THE CONTRACTOR SHALL CONTACT JULIE AT LEAST 48 HOURS PRIOR TO EXCAVATION TO DETERMINE WHICH UTILITIES ARE IN THE AREA.

ALL EXCAVATED MATERIAL, WHICH INCLUDES DIGGING OR GRADING OF ANY SOIL OR FILL MATERIAL, WITH THE EXCEPTION OF AGGREGATE FILLS, MUST BE LEFT ON, OR INCORPORATED WITHIN, THE IDOT RIGHT OF WAY DUE TO ENVIRONMENTAL DOCUMENTATION REQUIREMENTS.

EXCAVATED MATERIALS SHALL BE DISPOSED OF AT LOCATIONS DIRECTED BY THE ENGINEER. ANY SUCH DISPOSAL SHALL NOT CREATE AND UNSIGHTLY OR OBJECTIONABLE APPEARANCE OR DETRACT FROM THE NATURAL TOPOGRAPHIC FEATURES WITHOUT WRITTEN PERMISSION FROM THE ENGINEER.

THE FOLLOWING RATES OF APPLICATION HAVE BEEN USED IN CALCULATING PLAN QUANTITIES:

HMA RESURFACING	112	LBS / SQ YD / IN
-----------------	-----	------------------

BITUMINOUS MATERIALS (PRIME COAT) RATES	
TYPE OF SURFACE TO BE PRIMED	RESIDUAL ASPHALT RATE LB/SQ FT (KG/SQ M)
AGGREGATE BASE	0.25
MILLED HMA, AGED NON-MILLED HMA, MILLED CONCRETE, NON-MILLED CONCRETE & FINED CONCRETE	0.05
FOG COAT BWTWEEN HMA LIFTS, IL-4.75 & BRICK	0.025

DATE: 3-28-14

PREPARED BY: *Don Bonvil*
DISTRICT STUDIES & PLANS ENGINEER

EXAMINED BY: *Herbert Long (ced)*
DISTRICT CONSTRUCTION ENGINEER

Ray Shilly
DISTRICT MATERIALS ENGINEER

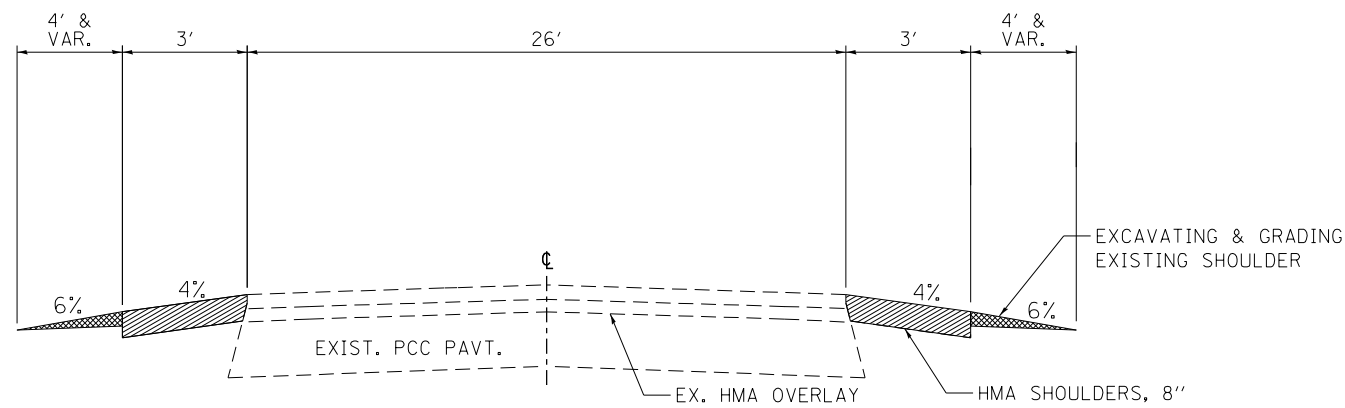
Bruce A. Wheeler
DISTRICT OPERATIONS ENGINEER

FILE NAME :	USER NAME :	DESIGNED -	REVISED -	STATE OF ILLINOIS DEPARTMENT OF TRANSPORTATION	GENERAL NOTES	F.A.P. RTE.	SECTION	COUNTY	TOTAL SHEETS	SHEET NO.	
g:\pwork\pwork\dot\smthbd\0265467\1117	DETAILS.DGN	DRAWN -	REVISED -			41	(14)-1	LIVINGSTON/ KANKAKEE	6	2	
MODEL NAME :	PLOT SCALE = 100.0000' / 1"	CHECKED -	REVISED -			SCALE: _____ SHEET _____ OF _____ SHEETS STA. _____ TO STA. _____		CONTRACT NO. 66084			
	PLOT DATE = 3/27/2014	DATE -	REVISED -			ILLINOIS FED. AID PROJECT					

CODE NO.	ITEM	UNIT	CONSTR. CODE
			FED / STATE 90% / 10% ROADWAY 0021 RURAL
20101400	NITROGEN FERTILIZER NUTRIENT	POUND	132
20101500	PHOSPHORUS FERTILIZER NUTRIENT	POUND	132
20101600	POTASSIUM FERTILIZER NUTRIENT	POUND	132
20200600	EXCAVATING AND GRADING EXISTING SHOULDER	UNIT	159
25000210	SEEDING, CLASS 2A	ACRE	1.5
25100115	MULCH, METHOD 2	ACRE	1.5
48203029	HOT-MIX ASPHALT SHOULDERS, 8"	SQ YD	5313
63500105	DELINEATORS	EACH	106
64200108	SHOULDER RUMBLE STRIPS, 8 INCH	FOOT	15942
67100100	MOBILIZATION	L SUM	1
70100500	TRAFFIC CONTROL AND PROTECTION, STANDARD 701326	L SUM	1
78009004	MODIFIED URETHANE PAVEMENT MARKING - LINE 4"	FOOT	17567
X4060110	BITUMINOUS MATERIALS (PRIME COAT)	POUND	13150
Z0030850	TEMPORARY INFORMATION SIGNING	SQ FT	42

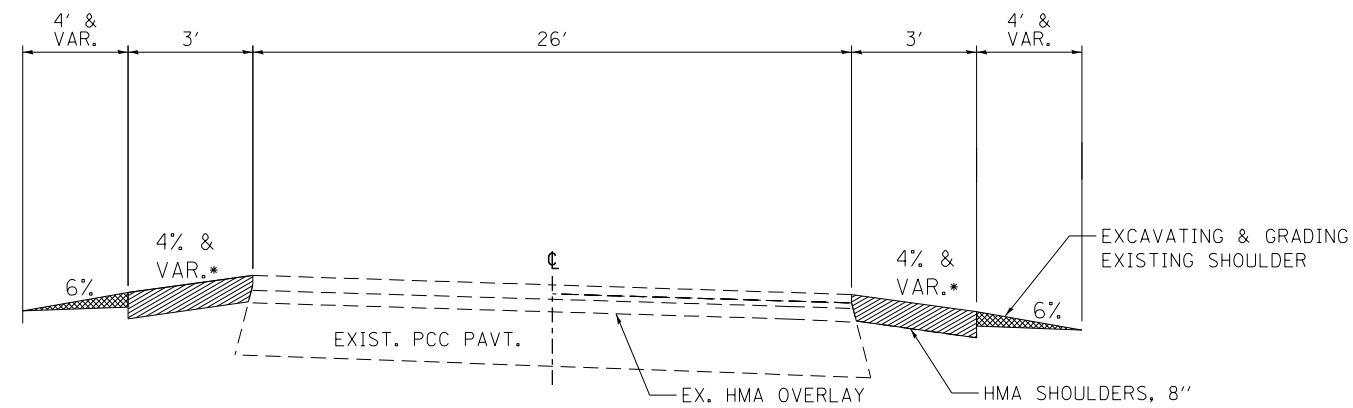
14

FILE NAME =	USER NAME = ferguson	DESIGNED - _____	REVISED - _____	STATE OF ILLINOIS DEPARTMENT OF TRANSPORTATION	SUMMARY OF QUANTITIES	F.A.P. RATE =	SECTION	COUNTY	TOTAL SHEETS	SHEET NO.	
S:\Everyone\Ferguson, Scott\Safety Jobs	Safety 2014\SK Projects\June Curve Jobs\IL	DRAWN BY NLLPGETA\LS.DDN	REVISED - _____			41	(14)-1	LIVINGSTON/KARRISSEE	6	3	
PLOT SCALE = 100,000' / in.	CHECKED - _____	REVISED - _____	SCALE: _____			SHEET _____ OF _____ SHEETS	STA. _____ TO STA. _____	CONTRACT NO. 66084			
MODEL NAME =	DATE - _____	REVISED - _____	ILLINOIS FED. AID PROJECT								



PROPOSED TYPICAL SECTION

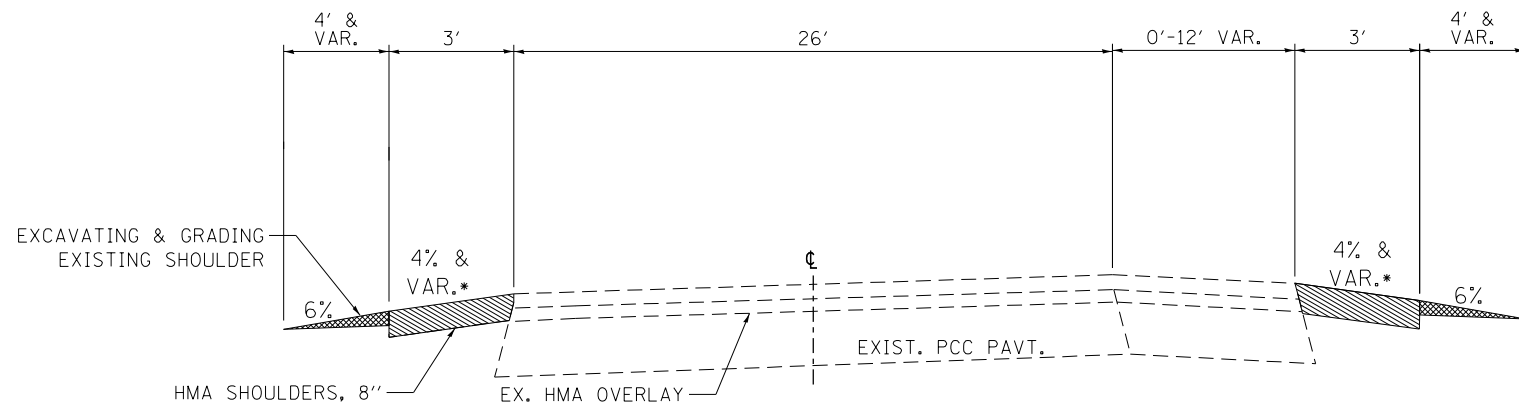
STA. 428+00.0 TO STA. 445+81.9
 STA. 474+86.7 TO STA. 482+27.0
 STA. 483+82.0 TO STA. 506+99.7



*FOR SUPERELEVATION RATES >4%, THE LOW SHOULDER WILL MATCH THE MAINLINE SLOPE. THE HIGH SHOULDER ROLLOVER SHALL NOT EXCEED 8%.

PROPOSED TYPICAL SECTION

STA. 445+81.9 TO STA. 449+23.8
 STA. 454+01.3 TO STA. 474+86.7
 STA. 506+99.7 TO STA. 541+83.5



*FOR SUPERELEVATION RATES >4%, THE LOW SHOULDER WILL MATCH THE MAINLINE SLOPE. THE HIGH SHOULDER ROLLOVER SHALL NOT EXCEED 8%.

PROPOSED TYPICAL SECTION

STA. 449+23.8 TO STA. 454+01.3 RT

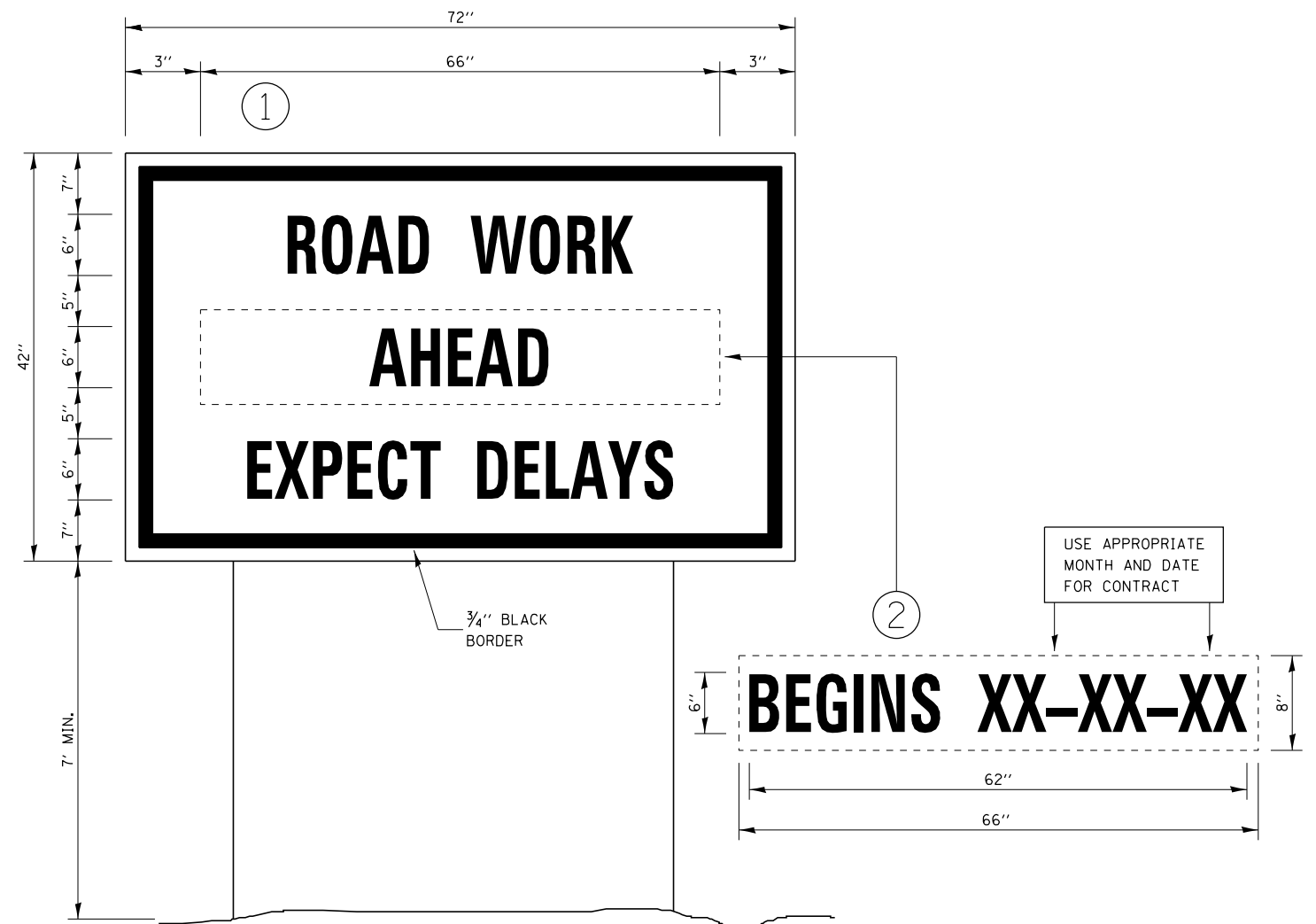
	HMA SHOULDERS BOTTOM 6"	HMA SHOULDERS TOP 2"
PG GRADE	PG64-22	PG64-22
DESIGN AIR	4.0% @	4.0% @
VOIDS	N50	N50
MIXTURE COMPOSITION	IL 19.0 FG	IL 9.5 FG
FRICTION		MIXTURE C
DENSITY CONTROL METHOD	CORES	CORES

IL 17 SHOULDER SCHEDULE											
		EXC & GRADING EX SHLD	HMA SHOULDERS 8"	BIT. PRIME COAT	SHOULDER RUMBLE STRIPS 8"	SEEDING CLASS 2A	MULCH METH. 2	NITROGEN FERTIL. NUTRIENT	PHOSPHOR. FERTIL. NUTRIENT	POTASSIUM FERTIL. NUTRIENT	
START PROJECT	LENGTH	UNIT	SQ YD	LBS	FOOT	ACRE	ACRE	POUND	POUND	POUND	
445+00.0 TO 454+01.3 LT & RT	901.3	18	601	1487	1803	0.25	0.25	15	15	15	
454+01.3 TO 456+27.3 LT	226.0	2	75	186	226	0	0	2	2	2	
456+27.3 TO 477+62.1 LT & RT	2134.8	43	1423	3522	4270	0.5	0.5	35	35	35	
477+62.1 TO 480+08.2 LT	246.1	2	82	203	246	0	0	2	2	2	
480+08.2 TO 482+27.0 LT & RT	218.8	4	146	361	438	0	0	4	4	4	
RR OMISSION											
482+27.0 TO 483+82.0	155.0										
483+82.0 TO 519+99.1 LT & RT	3617.1	72	2411	5967	7234	0.75	0.75	60	60	60	
519+99.1 TO 521+97.5 RT	198.4	2	66	163	198	0	0	2	2	2	
521+97.5 TO 528+71.6 LT & RT	674.1	13	449	1111	1348	0	0	11	11	11	
STA. EQ.											
528+71.6 BK = 540+93.9 AH											
END PROJECT											
540+93.9 TO 541+83.5 LT & RT	89.6	2	60	149	179	0	0	1	1	1	
TOTALS	8461.2	159	5313	13150	15942	1.5	1.5	132	132	132	

IL 17 DELINEATOR SCHEDULE			
LOCATION	DISTANCE	SPACING	DELINEATORS EACH
441+20 TO 445+20 LT & RT	400	200	6
447+20 TO 473+45 LT & RT	2625	125	44
475+45 TO 479+45 LT & RT	400	200	6
502+20 TO 506+20 LT & RT	400	200	6
508+20 TO 541+40 LT & RT	2100*	100	44
		TOTALS	106

*STATION EQUATION 528+71.6 BK = 540+93.9 AH

MODIFIED URETHANE PAVEMENT MARKING			
	LENGTH	PAINT 4" LINE WHITE	
START PROJECT	FOOT		
445+00 TO 454+01.3	901.3	1802.6	
449+23.8 TO 456+27.3	703.5	1407.0	
456+27.3 TO 477+62.1	2134.8	4269.6	
477+62.1 TO 482+27.0	464.9	929.8	
RR OMISSION			
482+27.0 TO 483+82.0	155.0		
483+82.0 TO 519+99.1	3617.1	7234.2	
519+99.1 TO 521+97.5	198.4	396.8	
521+97.5 TO 528+71.6	674.1	1348.2	
STA. EQ.			
528+71.6 BK = 540+93.9 AH			
END PROJECT			
540+93.9 TO 541+83.5	89.6	179.2	
TOTALS		17567.4	



TEMPORARY INFORMATION SIGNING

NOTES:

1. USE 6" D BLACK LETTERING ON FLOURESENT ORANGE BACKGROUND.
2. ERECT SIGNS AT LOCATIONS IN ADVANCE OF THE "ROAD CONSTRUCTION AHEAD" SIGNS AS DIRECTED BY THE ENGINEER.
3. ERECT SIGN ① WITH INSTALLED PANEL ② A MINIMUM OF ONE WEEK PRIOR TO THE START OF THE LANE CLOSURE.
4. REMOVE PANEL ② ON THAT DATE.
5. SEE SPECIAL PROVISION "TEMPORARY INFORMATION SIGNING" FOR ADDITIONAL INFORMATION.
6. WILL BE PAID FOR PER SQ FT AS "TEMPORARY INFORMATION SIGNING". EACH SIGN = 21 SQ FT AND THE DATE PANEL ② WILL NOT BE MEASURED SEPARATELY FOR PAYMENT.

FILE NAME =	USER NAME = fergusonse	DESIGNED - _____	REVISED - _____	STATE OF ILLINOIS DEPARTMENT OF TRANSPORTATION	DETAILS	F.A.P. RTE.	SECTION	COUNTY	TOTAL SHEETS	SHEET NO.
S:\Everyone\Ferguson, Scott\Safety Jobs\Safety 2014\5% Projects\June Curve Jobs\IL170DETAILS.DGN	DRAWN	REVISIONS	41			(14)I-1	LIVINGSTON/KANKAKEE	6	6	
#MODELNAME#	PLOT SCALE = 100.0000' / in.	CHECKED - _____	REVISED - _____			CONTRACT NO. 66D84				
	PLOT DATE = 3/28/2014	DATE - _____	REVISED - _____			ILLINOIS FED. AID PROJECT				