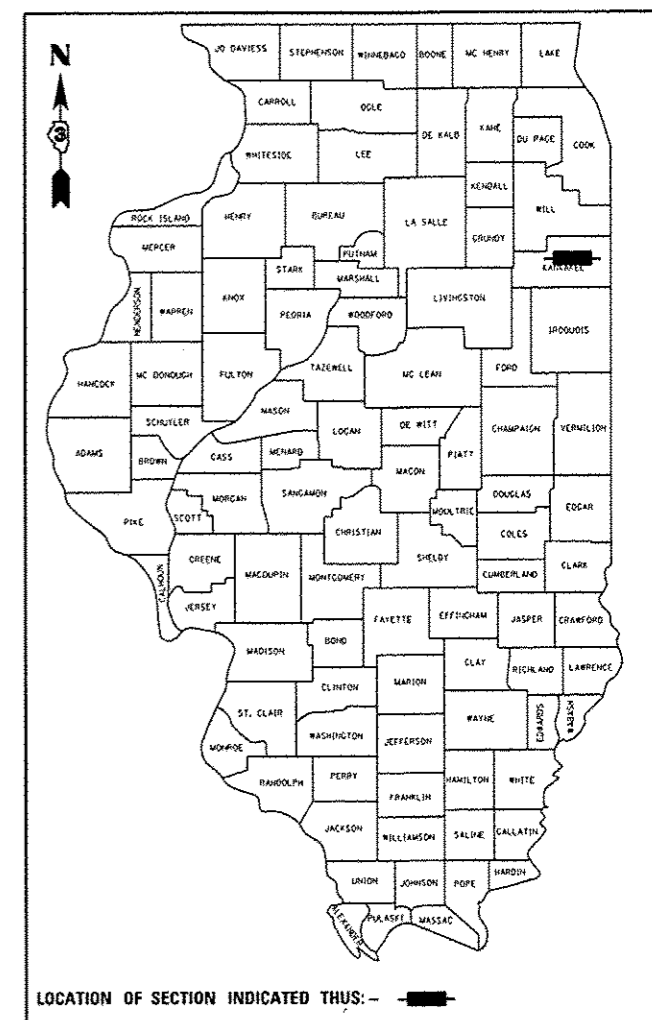


F.A.P. RTE.	SECTION	COUNTY	TOTAL SHEETS	SHEET NO.
VAR	*	KANKAKEE	24	1
		ILLINOIS	CONTRACT NO. 66D91	

• INTERMITTENT SPRING ROAD REPAIR 2014-6

D-93-069-14



LOCATION OF SECTION INDICATED THUS: — ■ —

SEE PAGE 2 FOR ADT AND FUNCTIONAL CLASSIFICATION

LOCATION 4
IL 114

STATE OF ILLINOIS
DEPARTMENT OF TRANSPORTATION
DIVISION OF HIGHWAYS

SUBMITTED April 11 20 14
Paul Leste
DEPUTY DIRECTOR OF HIGHWAYS, REGION ENGINEER

May 9 20 14
John D. Baranzelli, PE
ENGINEER OF DESIGN AND ENVIRONMENT

May 9 20 14
Omer Osman, P.E.
DIRECTOR OF HIGHWAYS, CHIEF ENGINEER

PRINTED BY THE AUTHORITY OF THE STATE OF ILLINOIS

STATE OF ILLINOIS
DEPARTMENT OF TRANSPORTATION
DIVISION OF HIGHWAYS

**PROPOSED
HIGHWAY PLANS**

VARIOUS ROUTES
INTMT SPRING RD REPAIR 2014-6
PROJECT
INTERMITTENT ROAD REPAIRS
KANKAKEE COUNTY

C-93-120-14

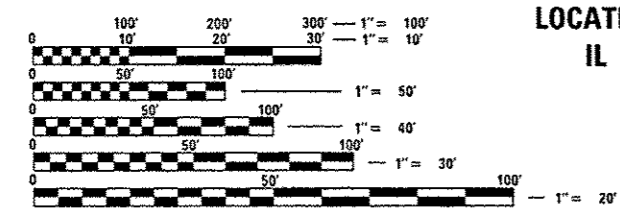
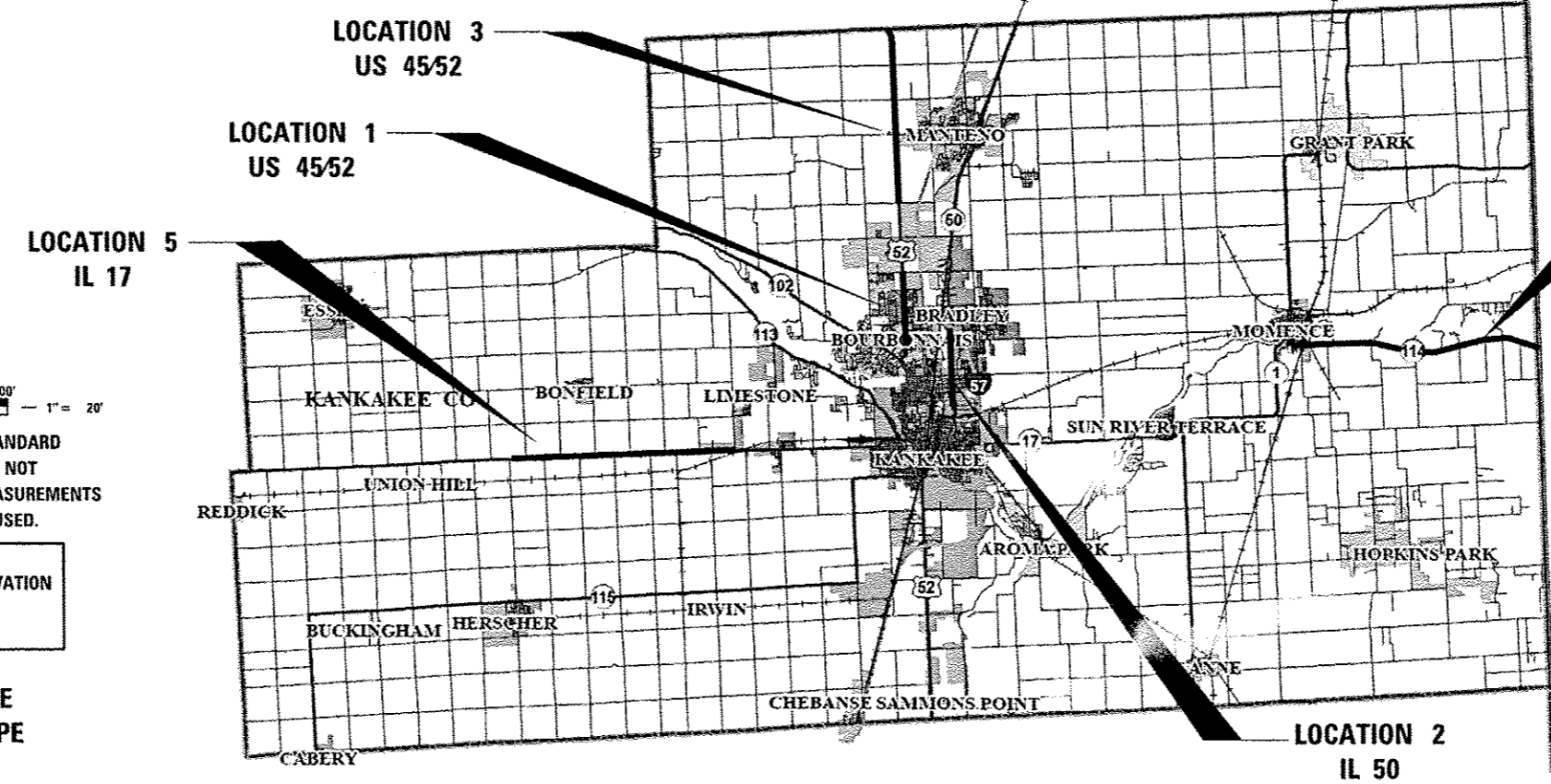
- LOCATION 1 - US 45/52 FROM ARMOUR RD TO INDIAN OAKS RD
- LOCATION 2 - IL 50 FROM 0.4 MILES SOUTH OF I-57 IN BRADLEY TO GRINNELL RD IN KANKAKEE
- LOCATION 3 - US 45/52 FROM WILL COUNTY LINE TO MANTENO RD
- LOCATION 4 - IL 114 FROM IL 1/17 TO INDIANA STATE LINE
- LOCATION 5 - IL 17 FROM HERSCHER RD TO 150' WEST OF NORFOLK SOUTHERN RR

INDEX OF SHEETS

- 1 COVER SHEET
- 2 GENERAL NOTES
- 3-5 SUMMARY OF QUANTITIES
- 6-8 TYPICAL SECTIONS
- 9-10 SCHEDULES
- 11-14 PROJECT LAYOUT MAPS
- 15-21 DETECTOR LOOP INFORMATION
- 22-24 DETAILS

LIST OF ILLINOIS DOT HIGHWAY STANDARDS

- 000001-06 STANDARD SYMBOLS, ABBREVIATIONS AND PATTERNS
- 001006 DECIMAL OF AN INCH AND OF A FOOT
- 424001-07 PERPENDICULAR CURB RAMPS FOR SIDEWALKS
- 424008-01 DIAGONAL CURB RAMPS FOR SIDEWALKS
- 424011-01 CORNER PARALLEL CURB RAMPS FOR SIDEWALKS
- 424016-01 MID-BLOCK CURB RAMPS FOR SIDEWALKS
- 424021-02 DEPRESSED CORNER FOR SIDEWALKS
- 701101-04 OFF-ROAD OPERATIONS MULTILANE, 15' (4.5 m) TO 24" (600 mm) FROM PAVEMENT EDGE
- 701301-04 LANE CLOSURE, 2L, 2W, SHORT TIME OPERATIONS
- 701308-03 LANE CLOSURE, 2L, 2W, SLOW MOVING OPERATIONS DAY ONLY, FOR SPEEDS ≥ 45 MPH
- 701311-03 LANE CLOSURE, 2L, 2W, MOVING OPERATIONS - DAY ONLY
- 701427-02 LANE CLOSURE, MULTILANE INTERMITTENT OR MOVING OPERATION, FOR SPEEDS ≤ 40 MPH
- 701501-08 URBAN LANE CLOSURE, 2L, 2W, UNDIVIDED
- 701602-07 URBAN LANE CLOSURE, MULTILANE, 2W WITH BIDIRECTIONAL LEFT TURN LANE
- 701606-09 URBAN LANE CLOSURE, MULTILANE, 2W WITH MOUNTABLE MEDIAN
- 701701-09 URBAN LANE CLOSURE, MULTILANE INTERSECTION
- 701801-05 LANE CLOSURE, MULTILANE 1W OR 2W CROSSWALK OR SIDEWALK CLOSURE
- 701901-03 TRAFFIC CONTROL DEVICES
- 780001-04 TYPICAL PAVEMENT MARKINGS
- 886001-01 DETECTOR LOOP INSTALLATIONS
- 886006-01 TYPICAL LAYOUT FOR DETECTION LOOPS



FULL SIZE PLANS HAVE BEEN PREPARED USING STANDARD ENGINEERING SCALES. REDUCED SIZED PLANS WILL NOT CONFORM TO STANDARD SCALES. IN MAKING MEASUREMENTS ON REDUCED PLANS, THE ABOVE SCALES MAY BE USED.

J.U.L.I.E.
JOINT UTILITY LOCATION INFORMATION FOR EXCAVATION
1-800-892-0123
OR 811

PROJECT ENGINEER: JOE KANNEL, PE
UNIT CHIEF: MICHELE LINDEMANN, PE
DISTRICT 3 NO. (815) 434-6131
CONTRACT NO. 66D91

GROSS LENGTH = 21.24 MILES