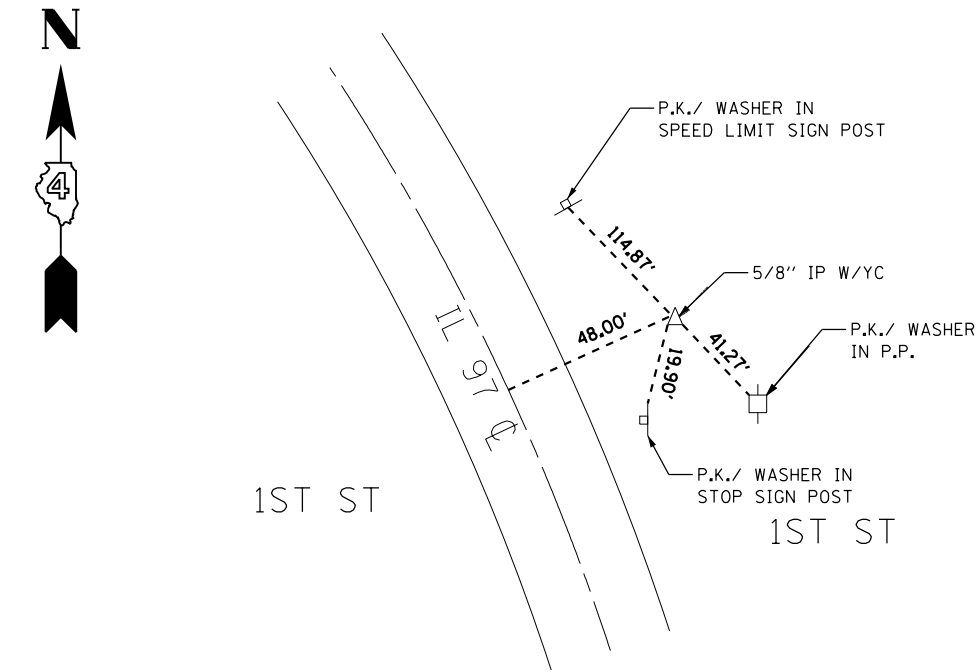
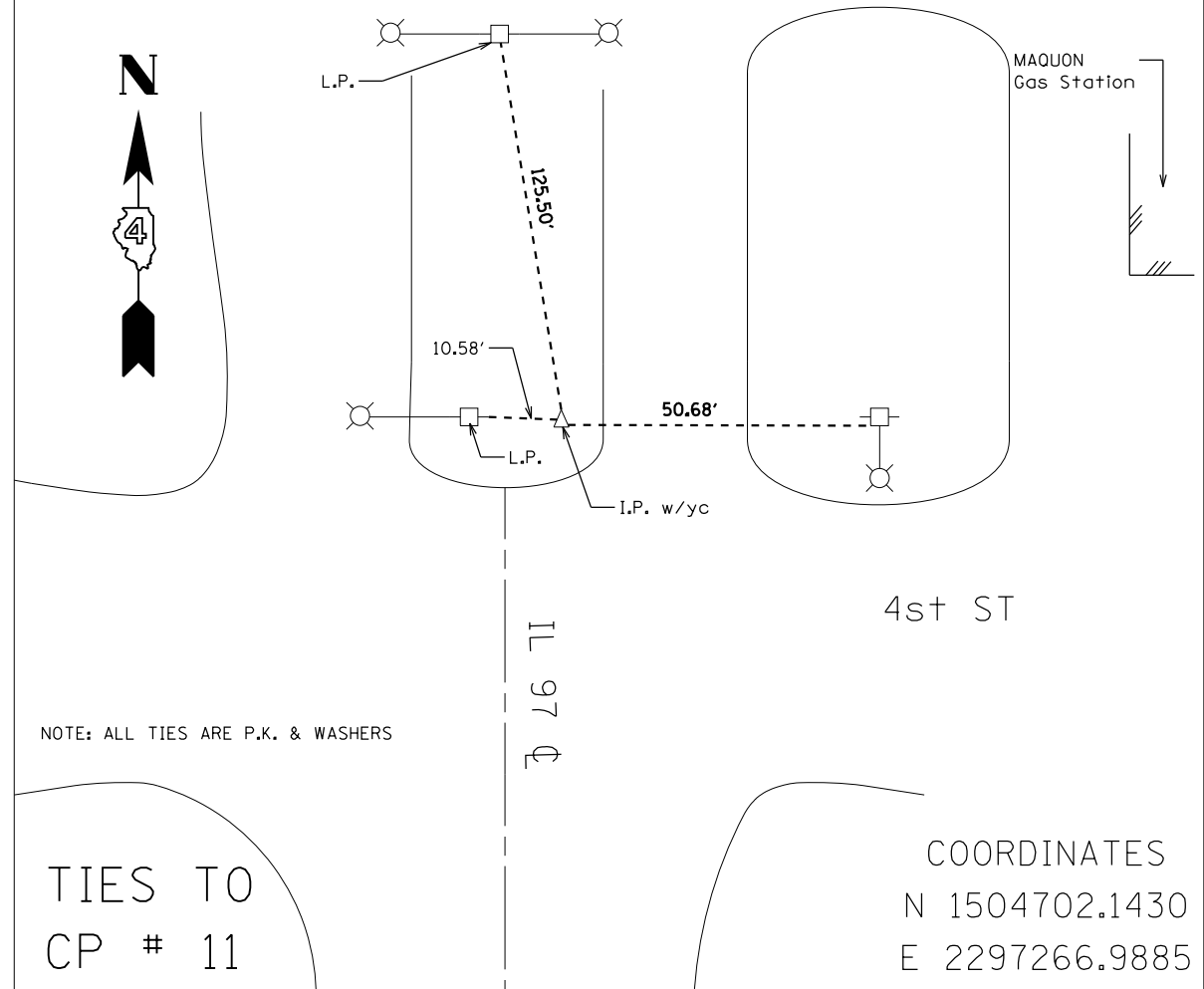


BENCHMARKS	
BENCHMARK	ELEVATION
TBM 100	628.05
CHIS. SQUARE ON TOP OF 6" WIDE CONC. RET. WALL, FLUSH W/GROUND, 1.1' W. OF P.P., STA. 738+60±	



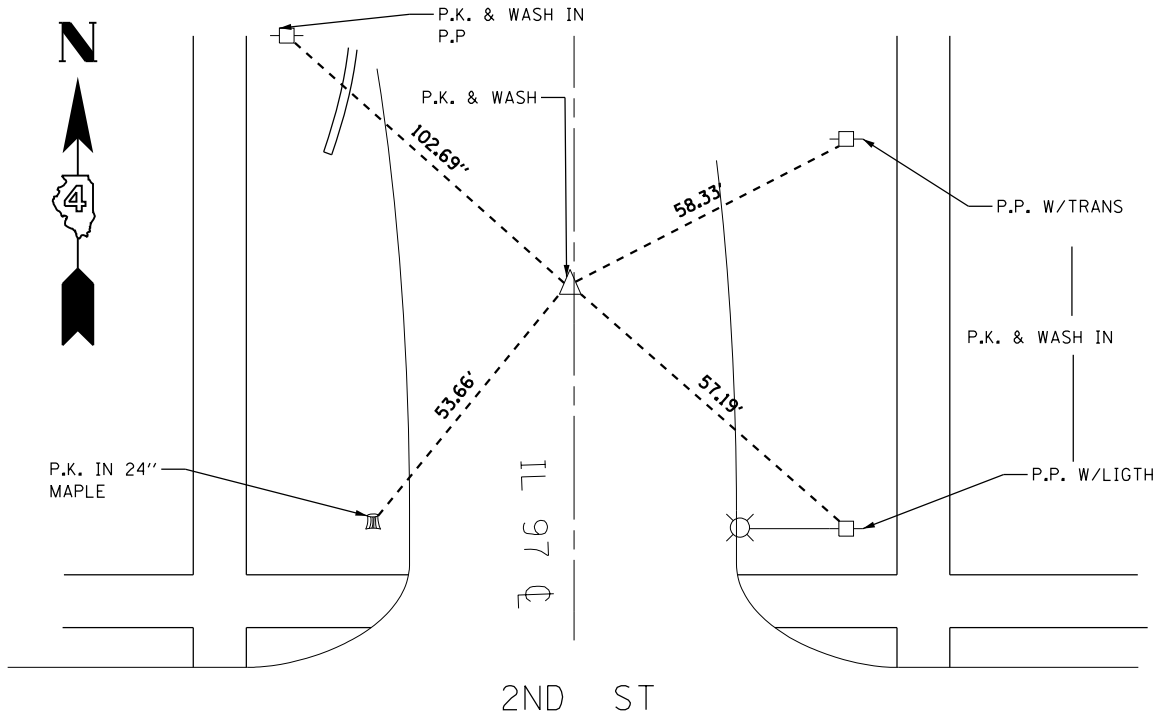
TIES TO  
CP # 10

COORDINATES  
N 1505687.3530  
E 2297245.6850



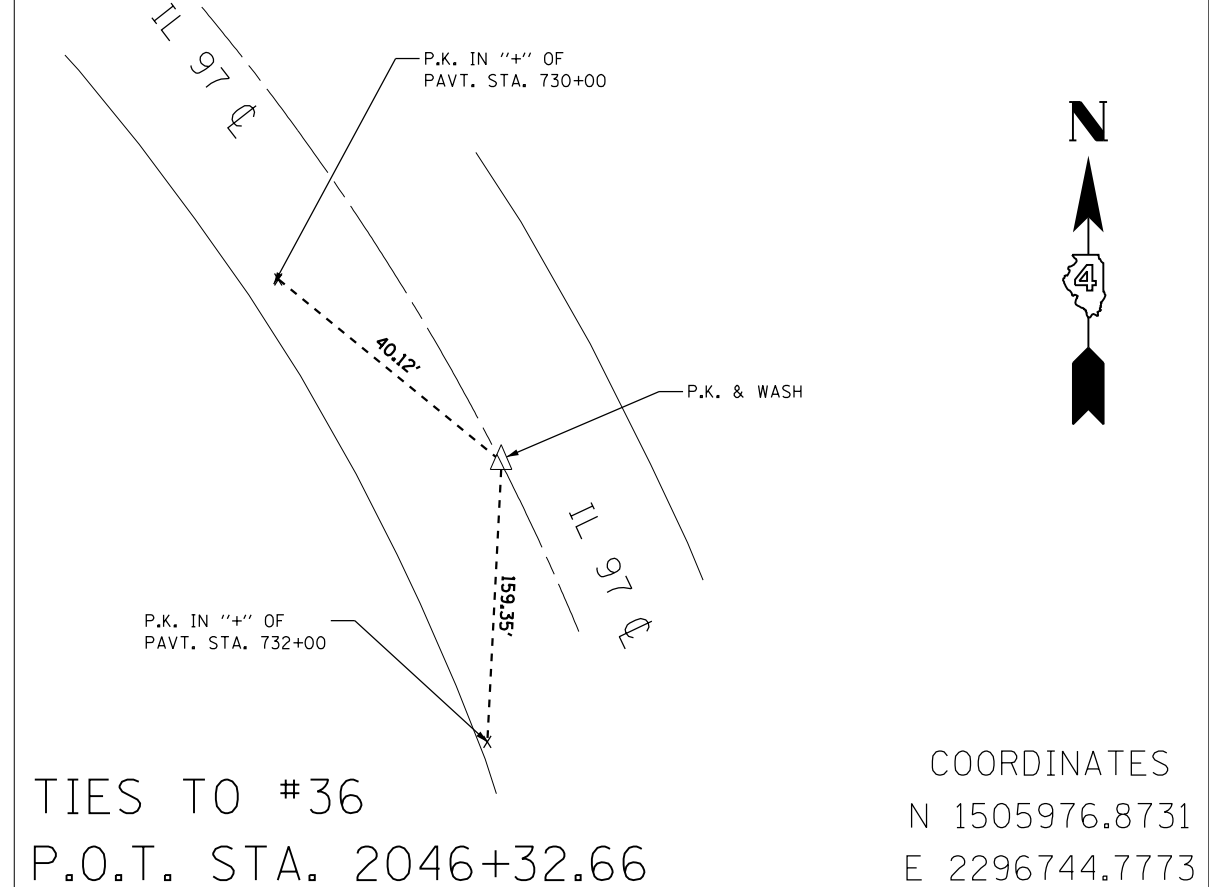
TIES TO  
CP # 11

COORDINATES  
N 1504702.1430  
E 2297266.9885



TIES TO #32  
P.O.T. STA. 2037+69.80

COORDINATES  
N 1505390.6125  
E 2297245.5766



TIES TO #36  
P.O.T. STA. 2046+32.66

COORDINATES  
N 1505976.8731  
E 2296744.7773

FILE NAME = D468B22-CADD.dgn	USER NAME = aubreys	DESIGNED -	REVISED -
		DRAWN -	REVISED -
		CHECKED -	REVISED -
ALL SHEETS FOR JOB	PLOT DATE = 3/26/2014	DATE -	REVISED -

STATE OF ILLINOIS  
DEPARTMENT OF TRANSPORTATION

ALIGNMENT, SURVEY TIES, AND BENCHMARKS

SCALE: SHEET OF SHEETS STA. TO STA.

F.A.P. RTE.	SECTION	COUNTY	TOTAL SHEETS	SHEET NO.
626	43N	KNOX	34	15
CONTRACT NO.				
ILLINOIS FED. AID PROJECT				