

06-13-14 LETTING ITEM 234
 INDEX OF SHEETS, SEE SHEET NO. 2

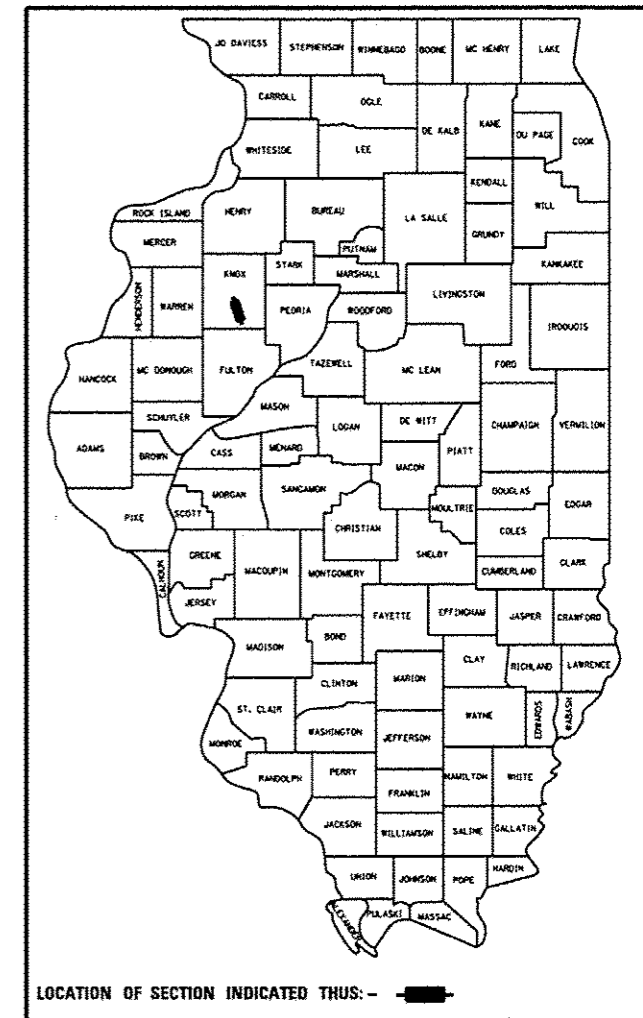
STATE OF ILLINOIS
 DEPARTMENT OF TRANSPORTATION
 DIVISION OF HIGHWAYS
**PROPOSED
 HIGHWAY PLANS**

FAP ROUTE 626 (IL 97)
 SECTION 43N

INTERSECTION IMPROVEMENT
 KNOX COUNTY
 C-94-004-13

F.A.P. RTE.	SECTION	COUNTY	TOTAL SHEETS	SHEET NO.
626	43N	KNOX	34	1
		ILLINOIS	CONTRACT NO. 68B22	

D-94-002-13



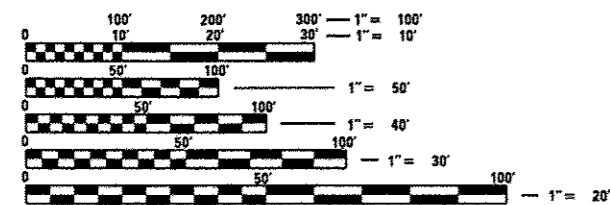
THE PROPOSED IMPROVEMENT CONSISTS OF WIDENING THE INTERSECTION OF IL 97 AND KNOX COUNTY HIGHWAY 20 (1ST ST.) IN MAQUON AND INSTALLING STORM SEWER.

HIGHWAY STANDARDS

- 280001-07
- 420001-07
- 442201-03
- 542301-03
- 602701-02
- 604001-03
- 606001-05
- 666001-01
- 667101-02
- 701001-02
- 701006-05
- 701301-04
- 701326-04
- 701501-06
- 701901-03

ADT = 1800
 %SU = 5.6%
 %MU = 5.6%

FUNCTIONAL CLASSIFICATION
 MINOR ARTERIAL

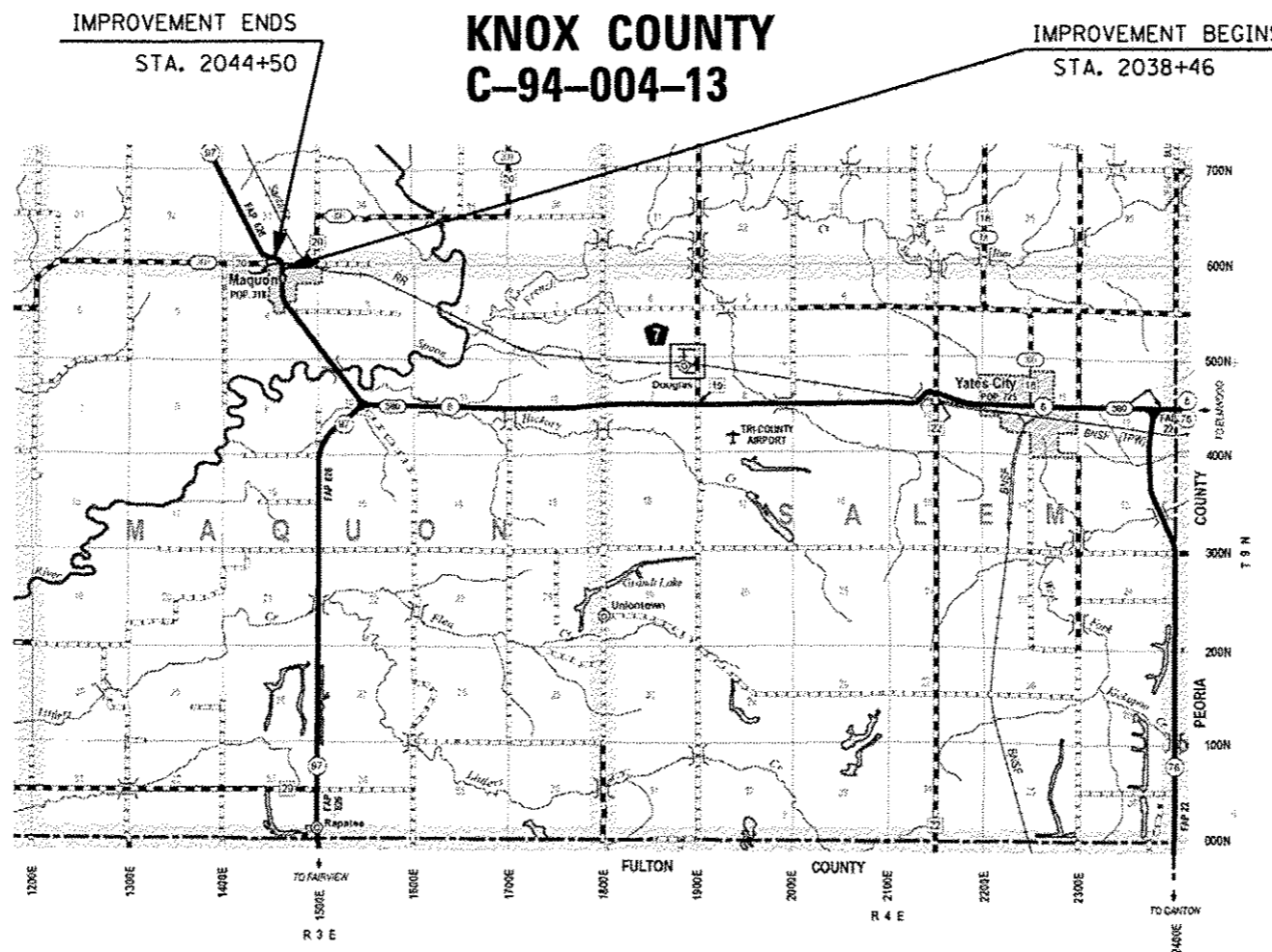


FULL SIZE PLANS HAVE BEEN PREPARED USING STANDARD ENGINEERING SCALES. REDUCED SIZED PLANS WILL NOT CONFORM TO STANDARD SCALES. IN MAKING MEASUREMENTS ON REDUCED PLANS, THE ABOVE SCALES MAY BE USED.

J.U.L.I.E.
 JOINT UTILITY LOCATION INFORMATION FOR EXCAVATION
 1-800-892-0123
 OR 811

PROJECT ENGINEER: RICH DOTSON (309-671-3455)
 PROJECT MANAGER KEVIN HORST (309-671-3472)

CATALOG NO. 034858-00D
 CONTRACT NO. 68B22



GROSS LENGTH = 604 FT. = 0.114 MILE
 NET LENGTH = 604 FT. = 0.114 MILE

STATE OF ILLINOIS
 DEPARTMENT OF TRANSPORTATION
 DIVISION OF HIGHWAYS

SUBMITTED *Money 27 20 14*

May 9 20 14
 John D. Baranzoni, P.E.
 ENGINEER OF DESIGN AND ENVIRONMENT

May 9 20 14
 Omer Osman, P.E.
 DIRECTOR OF HIGHWAYS, CHIEF ENGINEER

PRINTED BY THE AUTHORITY
 OF THE STATE OF ILLINOIS

INDEX OF SHEETS

- 1. COVER SHEET
- 2. INDEX OF SHEETS
- 3-4. GENERAL NOTES
- 5. PROJECT SPECIFIC NOTES
- 6. STATUS OF UTILITIES
- 7-9. SUMMARY OF QUANTITIES
- 10-11. TYPICAL SECTIONS
- 12-14. SCHEDULE OF QUANTITIES
- 15-16. ALIGNMENT, SURVEY TIES, AND BENCHMARKS
- 17. EXISTING AND REMOVAL
- 18. PROPOSED PLAN
- 19. KNOX CO. HIGHWAY 20 (1ST STREET) PROFILE
- 20. EROSION AND SEDIMENT CONTROL
- 21. DRAINAGE AND UTILITIES
- 22. RIGHT-OF-WAY PLAN
- 23. INTERSECTION DETAIL
- 24-31. DISTRICT DETAILS
- 32-34. CROSS SECTIONS

FILE NAME * 0468822-CA00.dgn	USER NAME * subtrayg	DESIGNED -	REVISED -	STATE OF ILLINOIS DEPARTMENT OF TRANSPORTATION	INDEX OF SHEETS				F.A.P. RTE.	SECTION	COUNTY	TOTAL SHEETS	SHEET NO.
	PLOT SCALE * 48.0000' / in.	DRAWN -	REVISED -		626	43N	KNOX	34	2				
	PLOT DATE * 3/26/2014	CHECKED -	REVISED -		SCALE: SHEET OF SHEETS STA. TO STA.				ILLINOIS FED. AID PROJECT		CONTRACT NO. 68822		
	ALL SHEETS FOR JOB	DATE -	REVISED -										

AVAILABILITY OF ELECTRONIC FILES

Micro Station and GEOPAK files of this project will be made available to the Contractor. If there is a conflict between the electronic files and the printed contract plans and documents, the printed contract plans and documents shall take precedence over the electronic files. The Contractor shall accept all risk associated with using the electronic files and shall hold the Department harmless for any errors or omissions in the electronic files and the data contained therein. Errors or delays resulting from the use of the electronic files by the Contractor shall not result in an extension of time for any interim or final completion date or shall not be considered cause for additional compensation. The Contractor shall not use, share, or distribute these electronic files except for the purpose of constructing this contract. Any claims by third parties due to use or errors shall be the responsibility of the Contractor. The Contractor shall include this disclaimer with the transfer of these electronic files to any other parties and shall include appropriate language binding them to similar responsibilities.

UTILITIES – LOCATIONS /INFORMATION ON PLANS

The locations of existing water mains, gas mains, sewers, electric power lines, telephone lines and other utilities as shown on the plans are based on careful field investigation and the best information available, but they are not guaranteed. Unless elevations are shown — all utility locations shown on the cross sections are based on the approximate depth supplied by the utility company. It shall be the Contractor's responsibility to ascertain their exact location from the utility companies and by field inspection.

PLAN ELEVATIONS – U. S. G. S. MEAN SEA LEVEL DATUM

All elevations shown on the plans are established from U. S. G. S. mean sea level datum.

COMMITMENTS

Commitments are not to be altered without the written approval of all parties to which the commitment was made.

No commitments have been made for this project.

PROPERTY OWNER ACCESS REQUIREMENTS

Access must be maintained to all existing properties during construction per Article 107.09 unless arrangements are made in writing by the Contractor with the property owners with a copy to the Engineer for short-term closures.

ENVIRONMENTAL REVIEWS

Prior to the use of any proposed borrow areas, use areas (temporary access roads, detours, run-arounds, etc.) and/or waste areas, the Contractor shall file the required environmental resource request surveys according to Section 107.22 of the Standard Specifications. These surveys are required in order for the Department to conduct cultural and biological resource surveys for the proposed site.

Prior to any waste materials being removed from the construction site the required environmental resource surveys will need to be obtained and filed by the Contractor. Excess waste products removed from the construction site shall be disposed of as required in Section 202.03 of the Standard Specifications.

Any protruding metal bars shall be removed prior to the disposal of broken concrete at approved disposal sites.

The required environmental resource documentation shall include the following:

- * BDE Form 2289 (Environmental Survey Request)
- * A location map showing the size limits and location of the use area
- * Signed property owner agreement form-D4 PI0100
- * Color photographs depicting the use area
- * Borrow Area Entry Agreement form-D4 PI0101

Please note that a minimum of two weeks shall be allowed for the District to obtain the required environmental clearances.

FILE NAME : 0458822-CA00.dgn	USER NAME : aubr@engr	DESIGNED -	REVISED -	STATE OF ILLINOIS DEPARTMENT OF TRANSPORTATION	GENERAL NOTES				F.A.P. RTE.	SECTION	COUNTY	TOTAL SHEETS	SHEET NO.
	PLOT SCALE : 1/8" = 1'-0"	DRAWN -	REVISED -						626	43N	KNOX	34	3
	PLOT DATE : 3/26/2014	CHECKED -	REVISED -		SCALE: SHEET OF SHEETS STA. TO STA.				CONTRACT NO. 68822				
	ALL SHEETS FOR JOB	DATE -	REVISED -		ILLINOIS FED. AID PROJECT								

PAVEMENT STATIONING NUMBERS & PLACEMENT

The Contractor shall provide labor and materials required to imprint pavement station numbers in the finished surface of the pavement and/or overlay. The numbers shall be approximately 3/4 inch (20mm) wide, 5 inches (125 mm) high and 5/8 inch (15 mm) deep.

The pavement station numbers shall be installed as specified herein:

Interval – 200 feet (English stationing) or 100 meters (metric stationing)

Bottom of Numbers – 6 inches (150 mm) from the inside edge of the pavement marking

Location:

- * 2,3, & 5 Lane Pavements – right edge of pavement in direction of increasing stations
- * Multi-Lane Divided Roadways – outside edge of pavement in both directions
- * Ramps – along baseline edge of pavement

Position – stations shall be placed so they can be read from the adjacent shoulder

Format – English (Metric) pavement stations shall use this format “XXX (XX+X00)” where X represents the pavement station

This work will not be paid for separately, but will be considered included in the cost of the associated pavement and/or overlay pay items.

POLYMERIZED BITUMINOUS MATERIALS (PRIME COAT) RATES

Surface Type	Estimated Truck Application Rate	Residual Rate
Milled (HMA or PCC)	0.10 gal/sy (0.0004 ton/sy)	0.05 gal/sy
Existing Pavement	0.05 gal/sy (0.00022 ton/sy)	0.025 gal/sy
Fog Coat (between lifts)	0.05 gal/sy (0.00022 ton/sy)	0.025 gal/sy

Note: Estimated truck application rate is used for estimating quantities.

HOT-MIX ASPHALT MIXTURE REQUIREMENTS

Mixture Use(s):	HMA SURF. CSE., TOP LIFT OF PATCHES	HMA BINDER CSE., LOWER LIFTS OF PATCHES
RAP % (Max):	15% MAX	15% MAX
AC/PC:	PG 64-22	PG 64-22
Design Air Voids:	4% @ N50	4% @ N50
Mixture Composition: (Gradation Mixture)	IL 9.5 OR 12.5	IL 9.5 OR 12.5
Friction Aggregate	MIX D	N.A.

Notes: Individual lift thickness of each mix type will be no less than 3 times nominal maximum aggregate size and no more than 6 times nominal aggregate size.

BUTT JOINT CUTTING TIME RESTRICTION

Butt joints shall not be milled more than three (3) days prior to placement of the HMA surface course.

ORDERING LENGTH CONFIRMATION – DRAINAGE ITEMS

The Contractor shall consult with the Engineer in regard to the exact length of the box/pipe culverts, storm sewers, and/or pipe drains required prior to ordering these items.

TRANSITION PAYMENT METHOD – NEW/OLD CONSTRUCTION

Three meter (10 ft.)(3m) transitions shall be used to match proposed items of work to existing items in the field unless otherwise shown. The transition shall be paid for at the contract unit price for the proposed item of work specified.

RIGHT-OF-WAY MARKERS

When installing right-of-way markers, care shall be taken to not disturb any existing property/right-of-way pins. If a property/right-of-way pin is found at the location of a proposed right-of-way marker, the marker shall be placed one (1) foot in front of the pin.

ENGINEERS FIELD OFFICE

Add the following sentence to the end of paragraph 670.02 (i) and 670.04 (e):
All of the telephone lines provided shall have unpublished numbers.

FILE NAME : 04R022-CA00.dgn	USER NAME : aubruggt	DESIGNED -	REVISED -	STATE OF ILLINOIS DEPARTMENT OF TRANSPORTATION	GENERAL NOTES	F.A.P. RTE.	SECTION	COUNTY	TOTAL SHEETS	SHEET NO.
	PLOT SCALE = 40.0000' / in.	DRAWN -	REVISED -			626	43N	KNOX	34	4
ALL SHEETS FOR JOB	PLOT DATE = 3/26/2014	CHECKED -	REVISED -	SCALE:	SHEET OF SHEETS	STA.	TO STA.	CONTRACT NO. 68B22 [ILLINOIS] FED. AID PROJECT		

ALL EARTHWORK REQUIRED TO CONSTRUCT COUNTY HIGHWAY 20 AND EARTH SLOPES ALONG COUNTY HIGHWAY 20 WILL NOT BE PAID FOR SEPARATELY, BUT SHALL BE INCLUDED IN THE COST OF THE VARIOUS PAY ITEMS PROVIDED FOR THE CONSTRUCTION OF COUNTY HIGHWAY 20.

FILE NAME = 0450822-CADD.dgn	USER NAME = eubreygt	DESIGNED -	REVISED -	STATE OF ILLINOIS DEPARTMENT OF TRANSPORTATION	PROJECT SPECIFIC NOTES			F.A.P. RTE.	SECTION	COUNTY	TOTAL SHEETS	SHEET NO.
	PLT SCALE = 40.0000' / in.	DRAWN -	REVISED -					626	43N	KNOX	34	5
ALL SHEETS FOR JOB	PLT DATE = 3/26/2014	CHECKED -	REVISED -		SCALE:	SHEET	OF	SHEETS	STA.	TO STA.	ILLINOIS FED. AID PROJECT	
		DATE -	REVISED -									

CODE NO.	ITEM	UNIT	TOTAL QUANTITY	CONST. CODE
				100% STATE
				0005
20800150	TRENCH BACKFILL	CU YD	33	33
21101615	TOPSOIL FURNISH & PLACE, 4"	SO YD	640	640
21400100	GRADING AND SHAPING DITCHES	FOOT	96	96
25000210	SEEDING, CLASS 2A	ACRE	0.3	0.3
25000400	NITROGEN FERTILIZER NUTRIENT	POUND	26	26
25000500	PHOSPHORUS FERTILIZER NUTRIENT	POUND	26	26
25000600	POTASSIUM FERTILIZER NUTRIENT	POUND	26	26
25100115	MULCH, METHOD 2	ACRE	0.3	0.3
28000500	INLET AND PIPE PROTECTION	EACH	2	2
30300106	AGGREGATE SUBGRADE IMPROVEMENT 6"	SO YD	418	418
40201000	AGGREGATE FOR TEMPORARY ACCESS	TON	27	27
40600215	POLYMERIZED BITUMINOUS MATERIALS (PRIME COAT)	TON	0.3	0.3
40600982	HOT - MIX ASPHALT SURFACE REMOVAL - BUTT JOINT	SO YD	23	23
40600990	TEMPORARY RAMP	SO YD	12	12
40603000	HOT - MIX ASPHALT BINDER COURSE, IL - 12.5, NSO	TON	139	139

FILE NAME =
0468822-CADD.dgn

USER NAME = aubreyg

DESIGNED -

REVISED -

DRAWN -

REVISED -

PLOT SCALE = 100.0000' / 1"

CHECKED -

REVISED -

PLOT DATE = 3/26/2014

DATE -

REVISED -

STATE OF ILLINOIS
DEPARTMENT OF TRANSPORTATION

SUMMARY OF QUANTITIES

F.A. RTE.	SECTION	COUNTY	TOTAL SHEETS	SHEET NO.
626	43N	KNOX	34	7
CONTRACT NO. 68822				
ILLINOIS FED. AID PROJECT				

CODE NO.	ITEM	UNIT	TOTAL QUANTITY	CONST. CODE
				100% STATE
				0005
40603335	HOT - MIX ASPHALT SURFACE COURSE, MIX "D", N50	TON	43	43
44000100	PAVEMENT REMOVAL	SQ YD	115	115
44000500	COMBINATION CURB AND GUTTER REMOVAL	FOOT	130	130
44201789	CLASS D PATCHES, TYPE II, 12 INCH	SQ YD	14	14
44201796	CLASS D PATCHES, TYPE IV, 12 INCH	SQ YD	26	26
48101200	AGGREGATE SHOULDERS, TYPE B	TON	37	37
50104400	CONCRETE HEADWALL REMOVAL	EACH	2	2
50105220	PIPE CULVERT REMOVAL	FOOT	214	214
50800105	REINFORCEMENT BARS	POUND	56	56
54213663	PRECAST REINFORCED CONCRETE FLARED END SECTIONS 18"	EACH	1	1
54213672	PRECAST REINFORCED CONCRETE FLARED END SECTIONS 27"	EACH	1	1
54248510	CONCRETE COLLAR	CU YD	0.9	0.9
550A0110	STORM SEWERS, CLASS A, TYPE 1 21"	FOOT	8	8
550A0130	STORM SEWERS, CLASS A, TYPE 1 27"	FOOT	164	164

FILE NAME = 0468822-C000.dgn	USER NAME = aubreyg	DESIGNED -	REVISED -
		DRAWN -	REVISED -
		CHECKED -	REVISED -
		DATE -	REVISED -

**STATE OF ILLINOIS
DEPARTMENT OF TRANSPORTATION**

SUMMARY OF QUANTITIES

F.A. RTE.	SECTION	COUNTY	TOTAL SHEETS	SHEET NO.
626	43N	KNOX	34	8
				CONTRACT NO. 68822
ILLINOIS FED. AID PROJECT				

CODE NO.	ITEM	UNIT	TOTAL QUANTITY	CONST. CODE
				100% STATE
				0005
60223800	MANHOLES, TYPE A, 6' -DIAMETER, TYPE 1 FRAME, CLOSED LID	EACH	1	1
60605000	COMBINATION CURB AND GUTTER, TYPE B-6. 24 ↑ CONCRETE	FOOT	170	170
66600105	FURNISHING AND ERECTING RIGHT-OF-WAY MARKERS	EACH	5	5
66700205	PERMANENT SURVEY MARKERS, TYPE I	EACH	2	2
67100100	MOBILIZATION	L SUM	1	1
70100500	TRAFFIC CONTROL AND PROTECTION, STANDARD 701326	L SUM	1	1
70102620	TRAFFIC CONTROL AND PROTECTION, STANDARD 701501	L SUM	1	1
70103815	TRAFFIC CONTROL SURVEILLANCE	CAL DA	10	10
X0324752	STORM SEWER TO BE FILLED	CU YD	5	5
X6021815	INLET-MANHOLE, TYPE G-1, 5' DIAMETER	EACH	1	1
Z0013798	CONSTRUCTION LAYOUT	L SUM	1	1
Z0056648	STORM SEWERS, TYPE 1, WATER MAIN QUALITY PIPE, 12"	FOOT	17	17
Z0056652	STORM SEWERS, TYPE 1, WATER MAIN QUALITY PIPE, 18"	FOOT	179	179

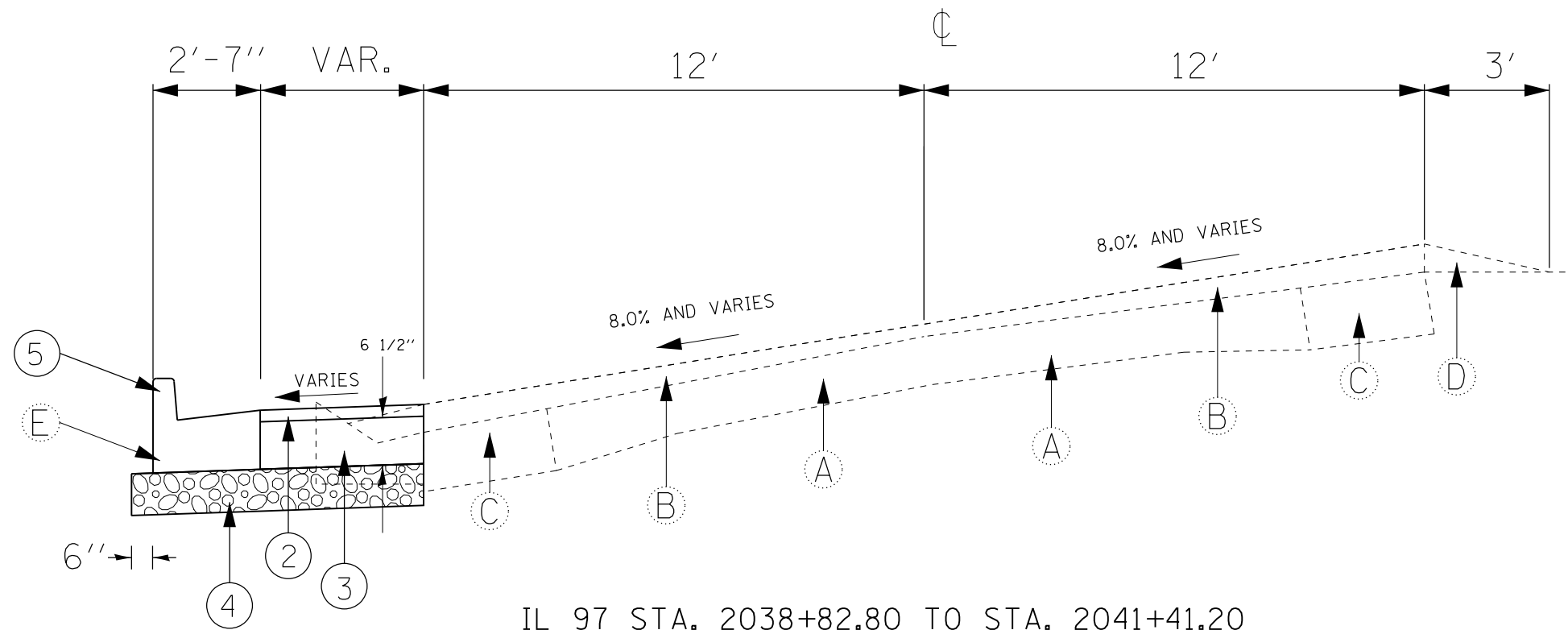
FILE NAME : 0468822-CA00.dgn	USER NAME : aobryga	DESIGNED -	REVISED -
		DRAWN -	REVISED -
		CHECKED -	REVISED -
		DATE -	REVISED -

DESIGNED -	REVISED -
DRAWN -	REVISED -
CHECKED -	REVISED -
DATE -	REVISED -

**STATE OF ILLINOIS
DEPARTMENT OF TRANSPORTATION**

SUMMARY OF QUANTITIES

F.A. RTE.	SECTION	COUNTY	TOTAL SHEETS	SHEET NO.
626	43N	KNOX	34	9
CONTRACT NO. 68B22				
ILLINOIS FED. AID PROJECT				



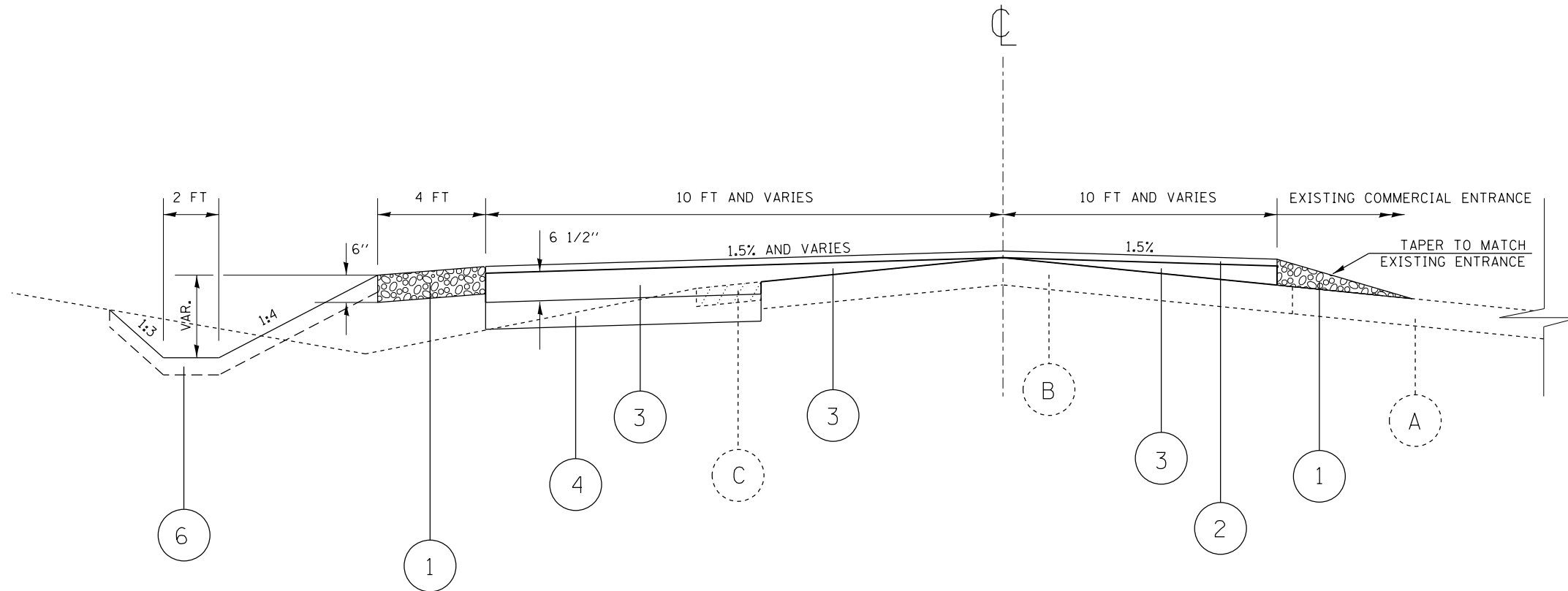
EXISTING

- (A) EXISTING P.C.C. PAVEMENT
- (B) EXISTING 4" BITUMINOUS OVERLAY
- (C) EXISTING BITUMINOUS BASE CSE. WIDENING
- (D) EXISTING AGGREGATE SHOULDER TYPE B
- (E) EXISTING COMB. CONC. CURB & GUTTER

PROPOSED

- (1) AGGREGATE SHOULDERS, TYPE B
- (2) HMA SURFACE COURSE, MIX "D", N50 (1 1/2")
- (3) HMA BINDER COURSE, IL-12.5, N50
- (4) AGGREGATE SUBGRADE IMPROVEMENT 6"
- (5) COMB. CONC. CURB AND GUTTER, TYPE B-6.24

FILE NAME : D468B22-CADD.dgn	USER NAME : aubreys	DESIGNED -	REVISED -	STATE OF ILLINOIS DEPARTMENT OF TRANSPORTATION	IL 97 TYPICAL SECTION			F.A.P. RTE.	SECTION	COUNTY	TOTAL SHEETS	SHEET NO.	
	PLOT SCALE = 40.0000' / in.	CHECKED -	REVISED -					626	43N	KNOX	34	10	
ALL SHEETS FOR JOB	PLOT DATE = 3/26/2014	DATE -	REVISED -		SCALE:	SHEET	OF	SHEETS	STA.	TO	STA.	ILLINOIS FED. AID PROJECT	
CONTRACT NO. 68B22													



KNOX COUNTY HIGHWAY 20 STA. 8+71.71 TO STA. 9+47.26

EXISTING

PROPOSED

- (A) EXISTING AGG. COMMERCIAL ENTRANCE
- (B) EXISTING PAVEMENT
- (C) EXISTING AGGREGATE SHOULDER

- (1) AGGREGATE SHOULDERS, TYPE B
- (2) HMA SURFACE COURSE, MIX "D", N50 (1 1/2")
- (3) HMA BINDER COURSE, IL-12.5, N50
- (4) AGGREGATE SUBGRADE IMPROVEMENT 6"
- (5) COMB. CONC. CURB AND GUTTER, TYPE B-6.24
- (6) TOPSOIL FURNISH & PLACE, 4 INCH

FILE NAME : D468B22-CADD.dgn	USER NAME : aubreys	DESIGNED -	REVISED -	STATE OF ILLINOIS DEPARTMENT OF TRANSPORTATION	KNOX COUNTY HIGHWAY 20 TYPICAL SECTION			F.A.P. RTE.	SECTION	COUNTY	TOTAL SHEETS	SHEET NO.	
	PLOT SCALE = 40.0000' / in.	CHECKED -	REVISED -					626	43N	KNOX	34	11	
ALL SHEETS FOR JOB	PLOT DATE = 3/26/2014	DATE -	REVISED -		SCALE:	SHEET	OF	SHEETS	STA.	TO	STA.	ILLINOIS FED. AID PROJECT	
CONTRACT NO. 68B22													

TRENCH BACKFILL	
LOCATION	CU YD
2040+37.8 TO 2041+19 LT	7.8
2040+37.8 LT TO 2039+96 RT	24.9
TOTAL	33

GRADING AND SHAPING DITCHES	
LOCATION	FOOT
IL 97 STA. 2041+41.5 LT TO C.H. 20 STA. 8+71.5 LT	96
TOTAL	96

INLET AND PIPE PROTECTION	
LOCATION	EACH
2040+38 LT	1
2041+19	1
TOTAL	2

HMA SURFACE REMOVAL - BUTT JOINT	
LOCATION	SY
8+71.71 TO 8+81.71	23
TOTAL	23

CLASS D PATCHES, TYPE II, 12 INCH		
LOCATION	DIMENSIONS	AREA
	(FTXFT)	(SQ YD)
STA 2040+19 LT	9X14	14
TOTAL		14

CLASS D PATCHES, TYPE IV, 12 INCH		
LOCATION	DIMENSIONS	AREA
	(FTXFT)	(SQ YD)
STA 2040+19 RT	9X26	26
TOTAL		26

TEMPORARY RAMP			
LOCATION	LENGTH	WIDTH	AREA
	FT	FT	SY
8+71.71	20.5	5	11.5
TOTAL			12

PAVEMENT REMOVAL	
LOCATION	SQ YD
CO. Hwy 20 STA. 9+47.26 TO STA. 9+86	115.3
TOTAL	115

CONCRETE HEADWALL REMOVAL	
LOCATION	EACH
2040+31.50, 42' LT	1
2040+34, 48.5' LT	1
TOTAL	2

SEEDING AND FERTILIZER SUMMARY						
LOCATION	TOPSOIL FURNISH & PLACE	SEEDING, CLASS 2A	NITROGEN FERT. NUT.	PHOSPHORUS FERT. NUT.	POTASSIUM FERT. NUT.	MULCH, METHOD 2
STATION TO STATION	SQ YD	ACRES	LBS	LBS	LBS	ACRE
2038+46 TO 2040+02 RT	69.3	0.08	7.2	7.2	7.2	0.08
2038+83 TO 2040+51 LT	250.8	0.05	4.5	4.5	4.5	0.05
2040+95 TO 2041+69 LT	318.7	0.07	6.3	6.3	6.3	0.07
2042+48 TO 2044+50 LT		0.08	7.2	7.2	7.2	0.08
TOTAL	640	0.3	26	26	26	0.3

LOCATION	AGGREGATE SUBGRADE IMPROVEMENT 6"	POLYMERIZED BITUMINOUS MATERIALS (PRIME COAT)	HMA BINDER COURSE, IL-12.5, N50	HMA SURFACE COURSE, MIX "D", N50
STATION TO STATION	SQ YD	TON	TON	TON
CO. HIGHWAY 20 STA. 8+71.7 TO 9+85.8	418	0.3	139	43
TOTAL	418	0.3	139	43

SHOULDER SCHEDULE				
LOCATION	LENGTH	WIDTH	AVG. THICKNESS	AGGREGATE SHOULDERS, TYPE B
	FOOT	FOOT	INCHES	TON
IL 97				
STA. 2038+46 TO STA. 2040+04 RT	158	4	4	16
CO. HWY 20				
STA. 8+71.7 TO STA. 9+35.5 RT	63.8	3	1	1.2
STA. 8+71.7 TO STA. 9+40.3 LT	129	4	6	19.6
TOTAL				37

COMBINATION CURB AND GUTTER REMOVAL	
LOCATION	FOOT
2038+82.50, 16' LT TO 2040+16.50, 17' LT	130
TOTAL	130

FURNISHING AND ERECTING RIGHT OF WAY MARKERS		
LOCATION	OFFSET	EACH
2039+50 LT	32.34	1
2040+21.19 LT	45	1
2041+30 LT	60	1
2041+30 LT	98.34	1
2044+50 LT	30	1
TOTAL		5

PIPE CULVERT REMOVAL		
LOCATION		FOOT
FROM	TO	
IL 97		
2038+49, 35.5' RT	2040+02, 62' RT	169
CO HWY 20		
9+59, 18' RT	9+46.50, 16.5' LT	37
9+48, 20 RT	9+56, 20' RT	8
TOTAL		214

MANHOLES, TYPE A, 6'-DIAMETER, TYPE 1 FRAME, CLOSED LID	
STATION	EACH
2039+96, 57' RT	1
TOTAL	1

COMB. CONC. CURB AND GUTTER, TYPE B-6.24		
LOCATION		EACH
FROM	TO	
IL 97		
2038+82.80 LT	9+35.80 RT	170
TOTAL		170

LOCATION	REINFORCEMENT BARS	CONCRETE COLLAR	PRECAST REINFORCED CONCRETE FLARED END SECTIONS 18"	PRECAST REINFORCED CONCRETE FLARED END SECTIONS 27"	STORM SEWERS, CLASS A, TYPE 1 21"	STORM SEWERS, CLASS A, TYPE 1 27"
	POUND	CU YD	EACH	EACH	FOOT	FOOT
IL 97						
2038+46, 32' RT				1		164
2039+96, 57' RT					8	
2040+02, 62' RT	32	0.5				
2040+37.74, 55.5' LT	24	0.4				
2041+19, 40' LT			1			
TOTAL	56	0.9	1	1	8	164

PERMANENT SURVEY MARKERS, TYPE I	
LOCATION	EACH
IL 97	
2038+47.31	1
2045+60.52	1
TOTAL	2

TRAFFIC CONTROL SCHEDULE			
LOCATION	TRAFFIC CONTROL AND PROTECTION, STANDARD 701326	TRAFFIC CONTROL AND PROTECTION, STANDARD 701501	TRAFFIC CONTROL SURVEILLANCE
	(L SUM)	(L SUM)	(CAL DA)
JOB SITE	1	1	10
TOTALS	1	1	10

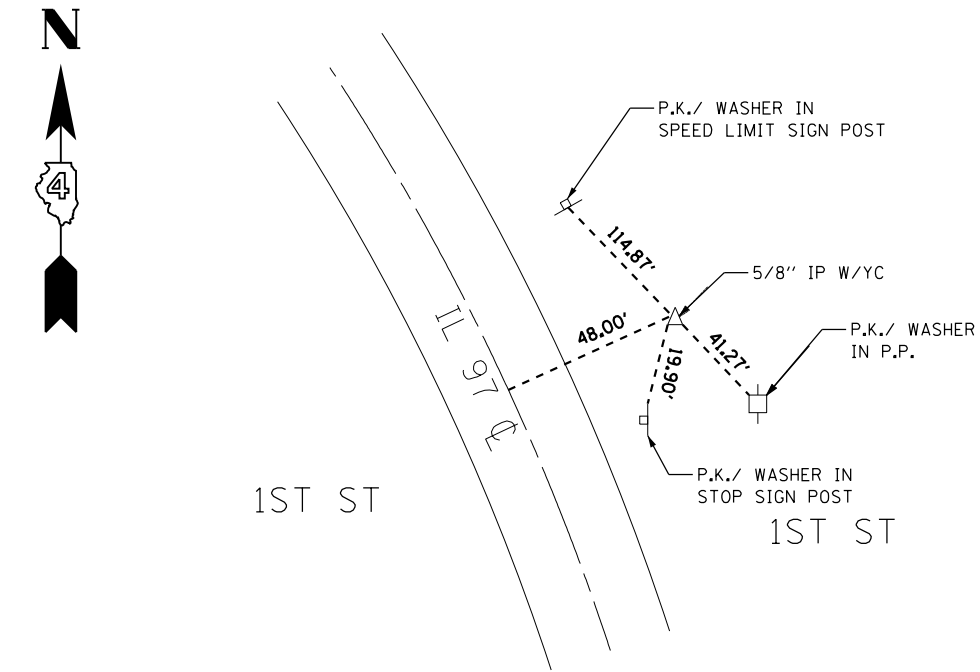
STORM SEWER TO BE FILLED			
STATION	TO	STATION	CU YD
2039+78, 50' RT		2040+31, 41' LT	5
TOTAL			5

MOBILIZATION	
LOCATION	L SUM
JOB SITE	1
TOTAL	1

INLET-MANHOLE, TYPE G-1, 5' DIAMETER	
LOCATION	EACH
2040+37.8, 37.42' LT	1
TOTAL	1

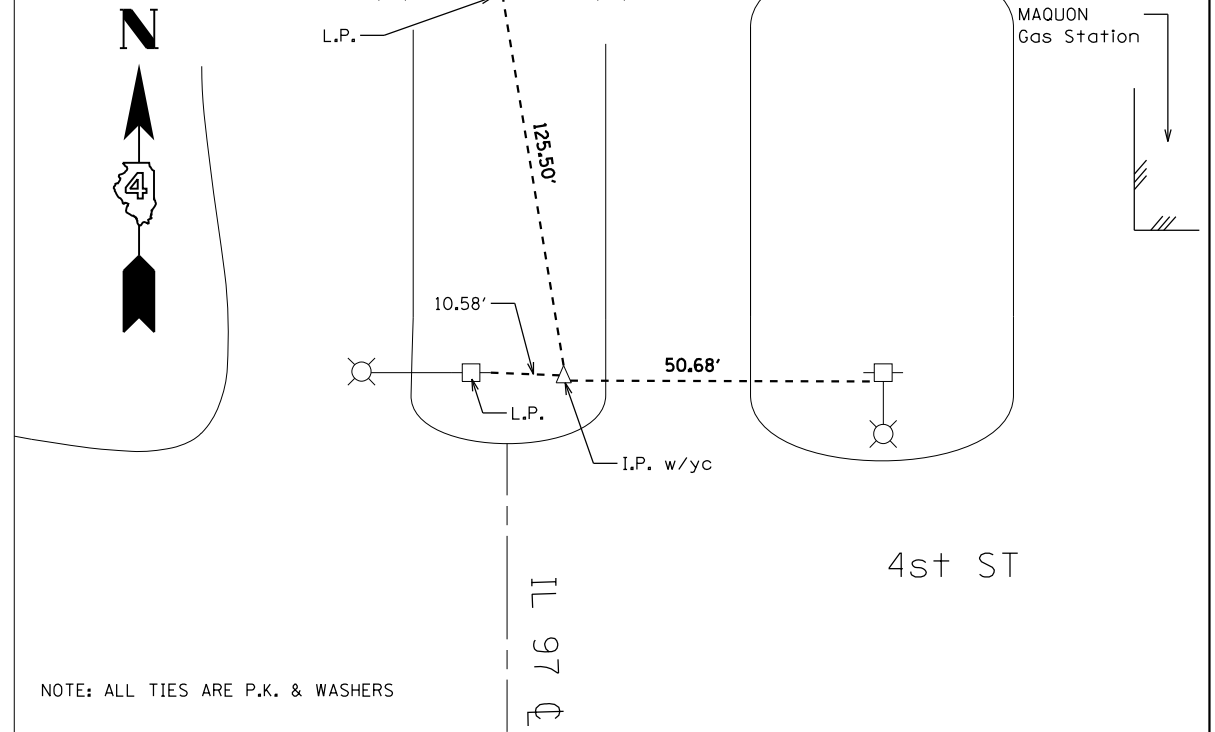
LOCATION			STORM SEWERS, TYPE 1, WATER MAIN QUALITY PIPE, 12"	STORM SEWERS, TYPE 1, WATER MAIN QUALITY PIPE, 18"	AGGREGATE FOR TEMPORARY ACCESS
IL 97			FOOT	FOOT	TON
STATION	TO	STATION			
2039+96, 57' RT	TO	2040+37.8, 37.42' LT		104	27
2040+37.8, 37.42' LT	TO	2041+19, 40' LT		75	
2040+37.8, 37.42' LT	TO	2040+37.74, 55.50 LT	17		
TOTAL			17	179	27

BENCHMARKS	
BENCHMARK	ELEVATION
TBM 100	628.05
CHIS. SQUARE ON TOP OF 6" WIDE CONC. RET. WALL, FLUSH W/GROUND, 1.1' W. OF P.P., STA. 738+60±	



TIES TO
CP # 10

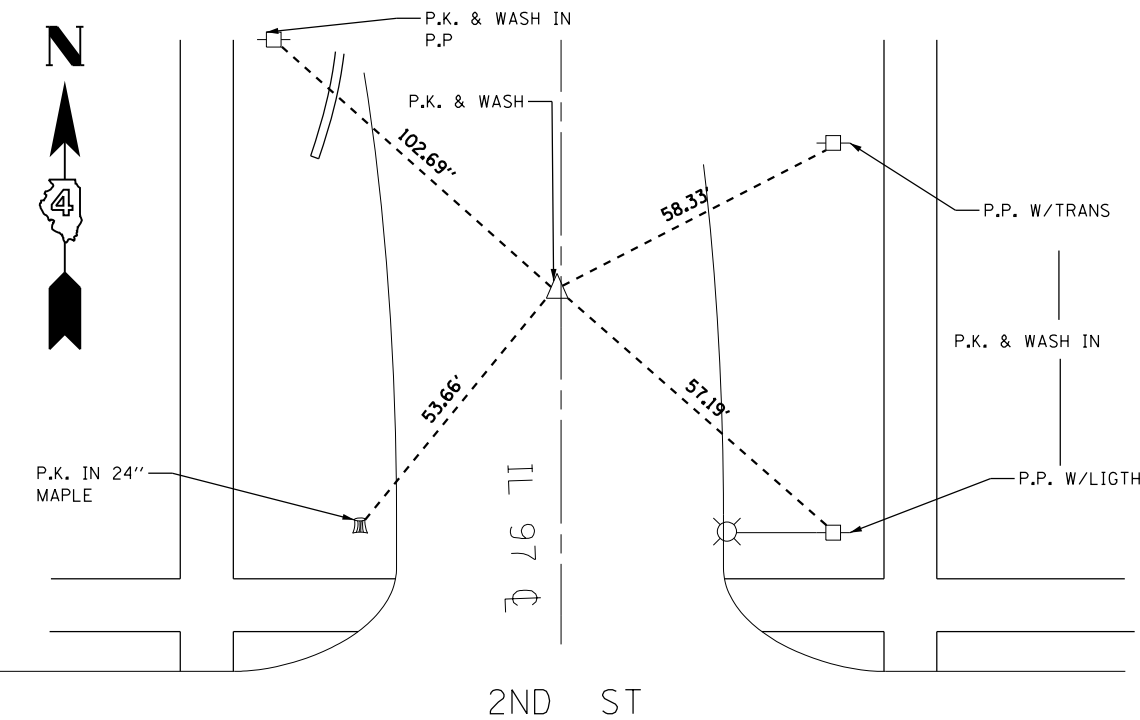
COORDINATES
N 1505687.3530
E 2297245.6850



NOTE: ALL TIES ARE P.K. & WASHERS

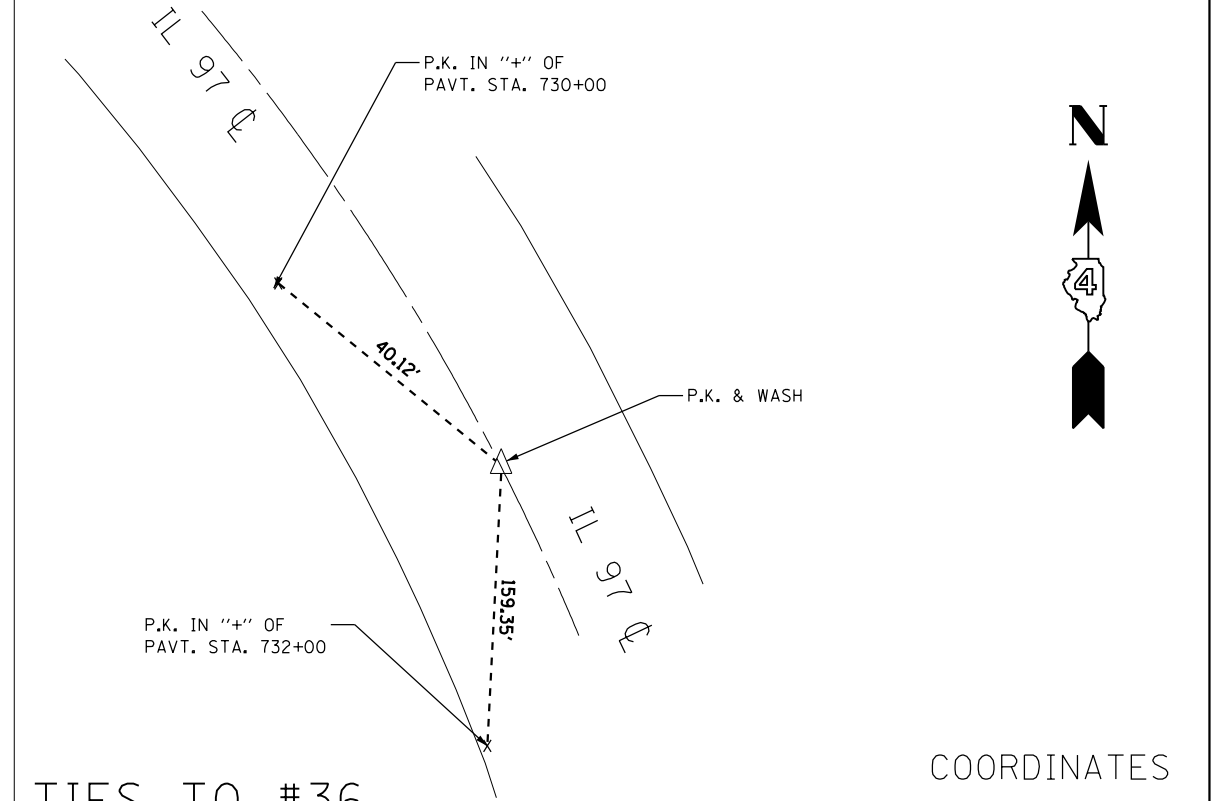
TIES TO
CP # 11

COORDINATES
N 1504702.1430
E 2297266.9885



TIES TO #32
P.O.T. STA. 2037+69.80

COORDINATES
N 1505390.6125
E 2297245.5766



TIES TO #36
P.O.T. STA. 2046+32.66

COORDINATES
N 1505976.8731
E 2296744.7773

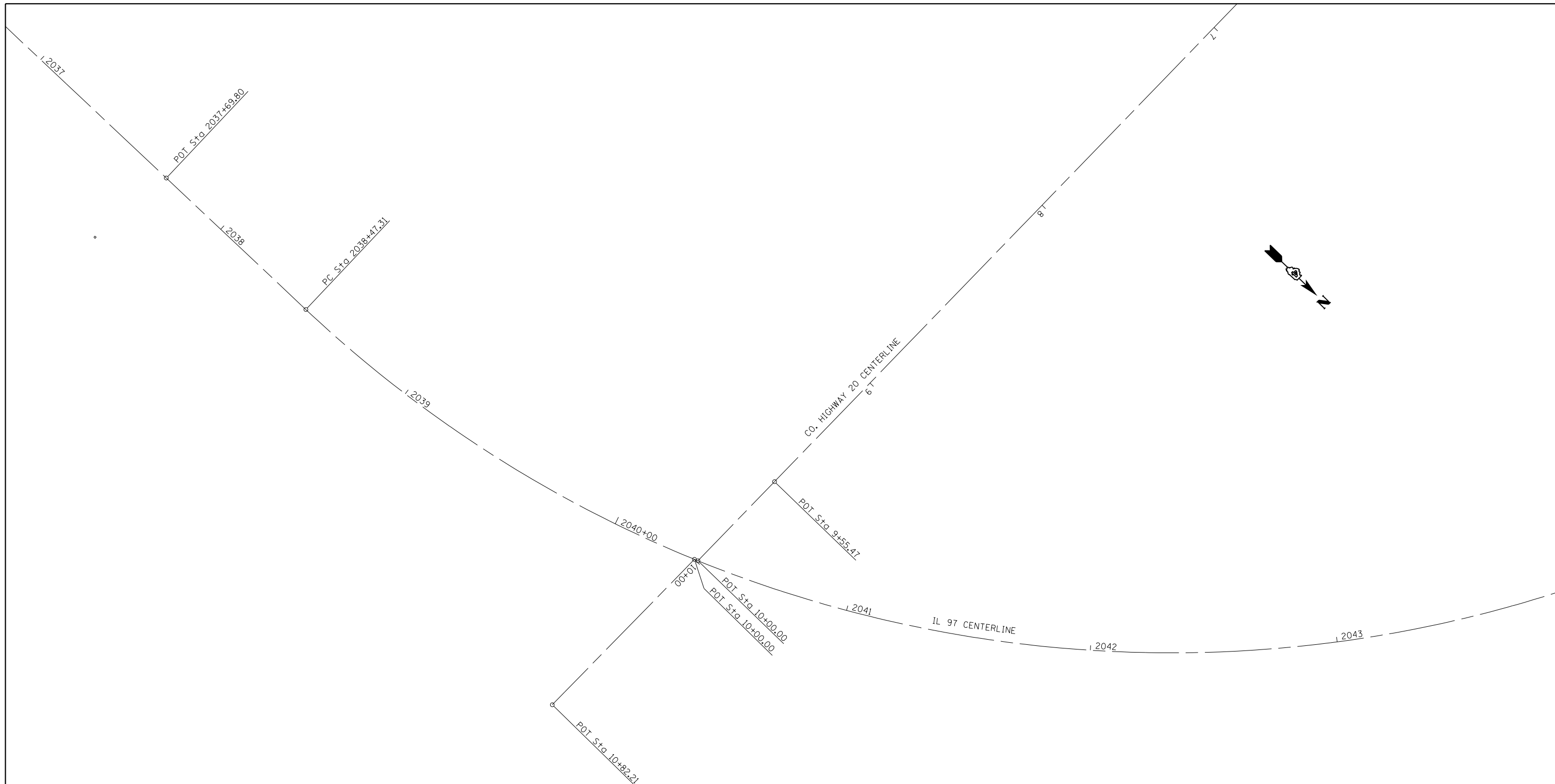
FILE NAME = D468B22-CADD.dgn	USER NAME = aubreys	DESIGNED -	REVISED -
		DRAWN -	REVISED -
		CHECKED -	REVISED -
ALL SHEETS FOR JOB	PLOT DATE = 3/26/2014	DATE -	REVISED -

STATE OF ILLINOIS
DEPARTMENT OF TRANSPORTATION

ALIGNMENT, SURVEY TIES, AND BENCHMARKS

SCALE: SHEET OF SHEETS STA. TO STA.

F.A.P. RTE.	SECTION	COUNTY	TOTAL SHEETS	SHEET NO.
626	43N	KNOX	34	15
CONTRACT NO.				
ILLINOIS FED. AID PROJECT				



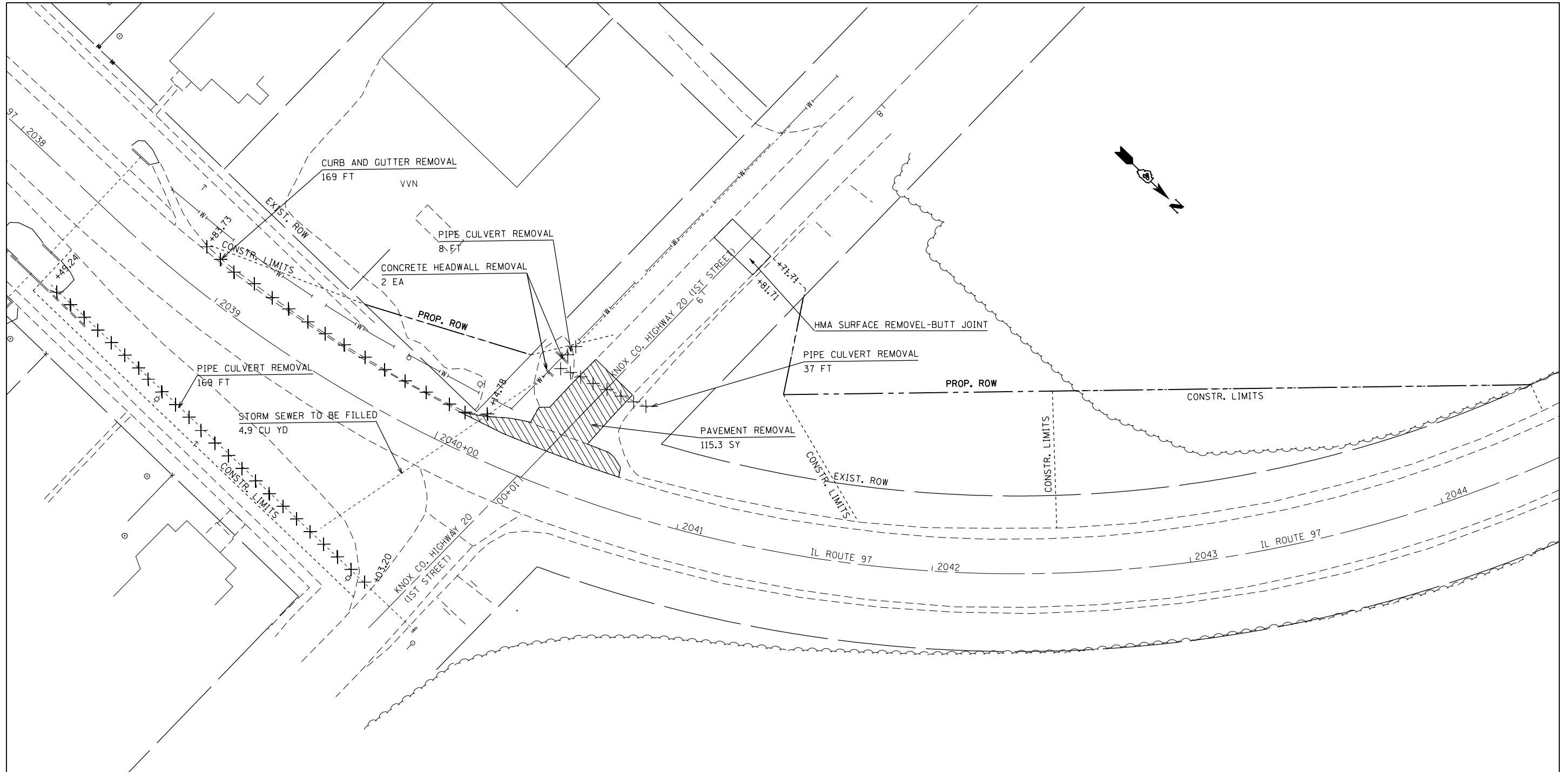
EXIST. CURVE IL97EXCL1
 PI STA. = 2042+76.20
 Δ = 80° 07' 28"
 D = 11° 14' 28" (LT)
 R = 510.00'
 T = 428.89'
 L = 713.20'
 E = 156.37'
 e = ----
 T.R. = ----
 S.E. RUN = ----
 P.C. STA. = 2038+47.31
 P.T. STA. = 2045+60.52

FILE NAME = D468B22-CADD.dgn	USER NAME = aubreys	DESIGNED -	REVISED -
		DRAWN -	REVISED -
ALL SHEETS FOR JOB	PLOT SCALE = 40.0000' / in.	CHECKED -	REVISED -
	PLOT DATE = 3/26/2014	DATE -	REVISED -

**STATE OF ILLINOIS
DEPARTMENT OF TRANSPORTATION**

ALIGNMENT, SURVEY TIES, AND BENCHMARKS			
SCALE:	SHEET	OF SHEETS	STA. TO STA.

F.A.P. RTE.	SECTION	COUNTY	TOTAL SHEETS	SHEET NO.
626	43N	KNOX	34	16
CONTRACT NO.				
ILLINOIS FED. AID PROJECT				



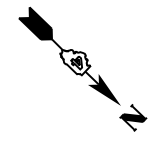
FILE NAME = D468B22-CADD.dgn	USER NAME = aubreys	DESIGNED -	REVISED -
		DRAWN -	REVISED -
	PLOT SCALE = 40.0000' / in.	CHECKED -	REVISED -
ALL SHEETS FOR JOB	PLOT DATE = 3/26/2014	DATE -	REVISED -

**STATE OF ILLINOIS
DEPARTMENT OF TRANSPORTATION**

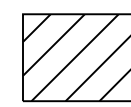
EXISTING AND REMOVAL

SCALE: SHEET OF SHEETS STA. TO STA.

F.A.P. RTE.	SECTION	COUNTY	TOTAL SHEETS	SHEET NO.
626	43N	KNOX	34	17
CONTRACT NO. 68B22				
ILLINOIS FED. AID PROJECT				



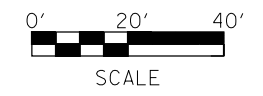
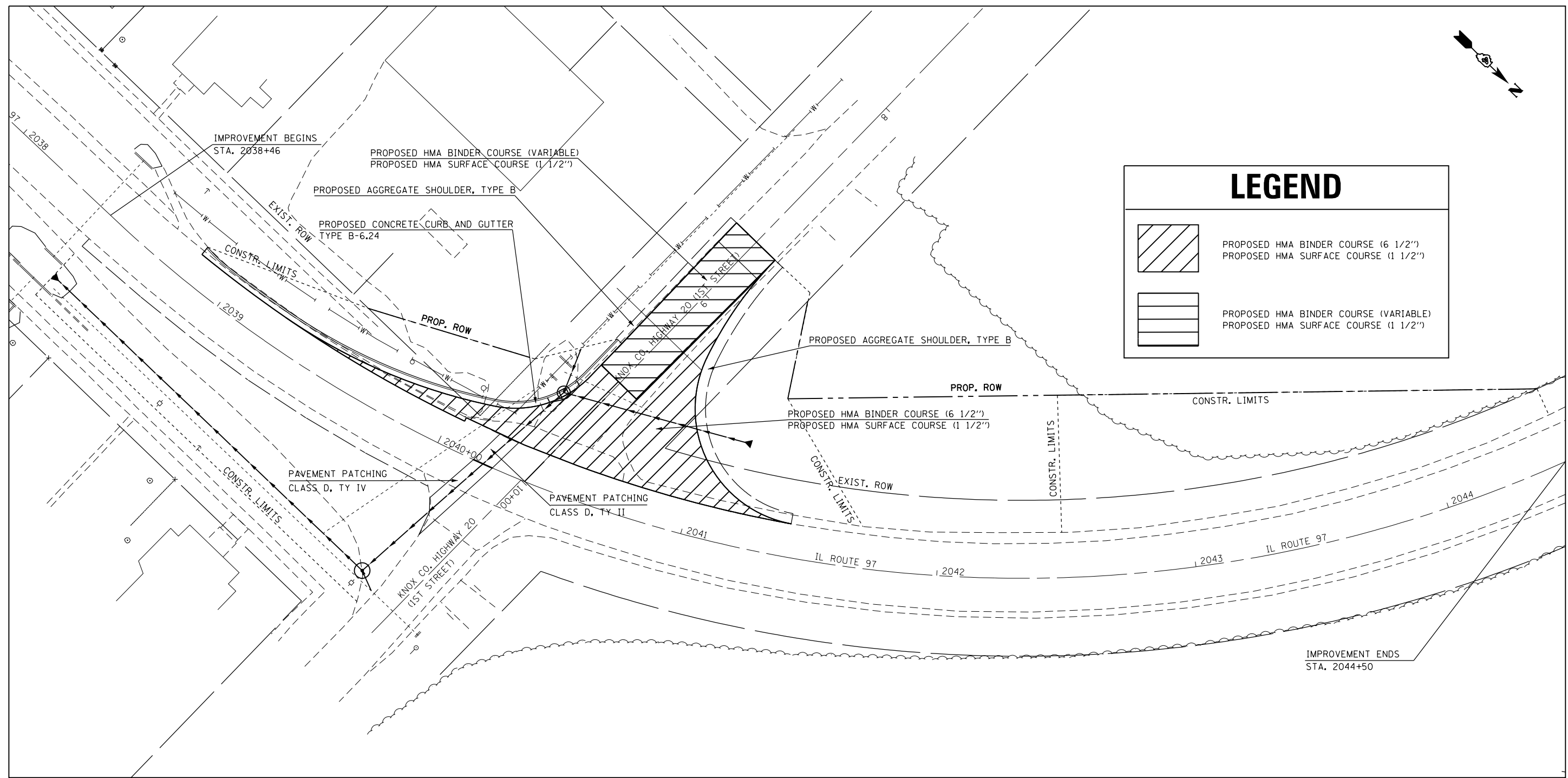
LEGEND



PROPOSED HMA BINDER COURSE (6 1/2")
PROPOSED HMA SURFACE COURSE (1 1/2")



PROPOSED HMA BINDER COURSE (VARIABLE)
PROPOSED HMA SURFACE COURSE (1 1/2")



FILE NAME = D468B22-CADD.dgn	USER NAME = aubreys	DESIGNED -	REVISED -
		DRAWN -	REVISED -
	PLOT SCALE = 48.0000' / in.	CHECKED -	REVISED -
ALL SHEETS FOR JOB	PLOT DATE = 3/26/2014	DATE -	REVISED -

**STATE OF ILLINOIS
DEPARTMENT OF TRANSPORTATION**

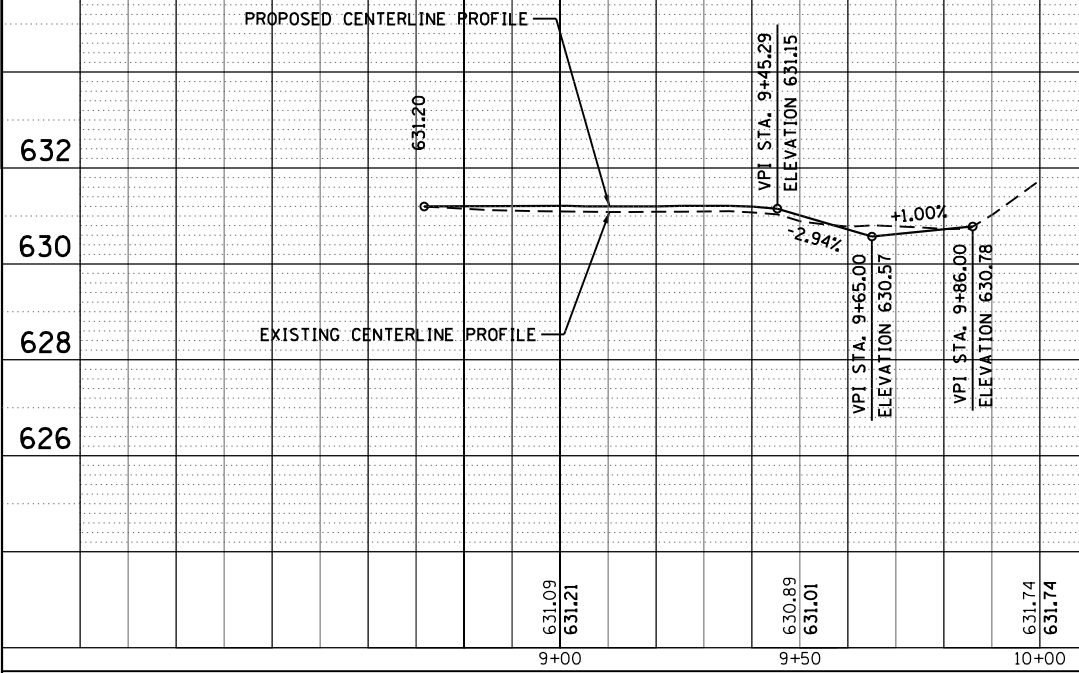
PROPOSED PLAN

SCALE:	SHEET	OF	SHEETS	STA.	TO	STA.
--------	-------	----	--------	------	----	------

F.A.P. RTE.	SECTION	COUNTY	TOTAL SHEETS	SHEET NO.
626	43N	KNOX	34	18
CONTRACT NO. 68B22				
ILLINOIS FED. AID PROJECT				

PLAN	SURVEYED	BY	DATE
	PLOTTED		
	NOTE BOOK		
	NO.		
	CADD FILE NAME		

PROFILE	SURVEYED	BY	DATE
	PLOTTED		
	GRADES CHECKED		
	STRUCTURE		
	NOT AT THIS OFFICE		



FILE NAME =
D468822-CADD.dgn

USER NAME = aubreys
PLOT SCALE = 40.0000' / in.
PLOT DATE = 3/26/2014

DESIGNED -
DRAWN -
CHECKED -
DATE -

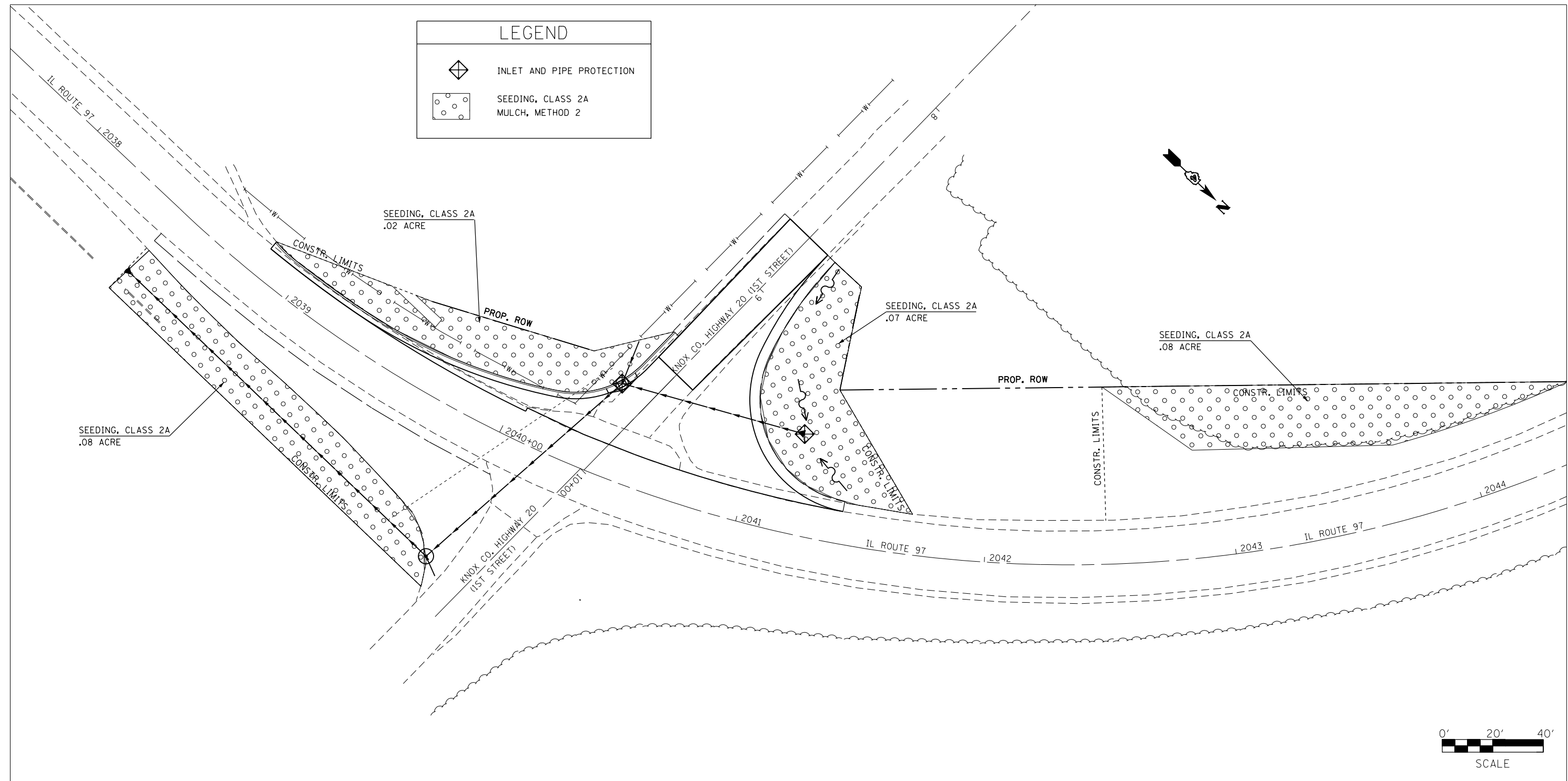
REVISED -
REVISED -
REVISED -
REVISED -

**STATE OF ILLINOIS
DEPARTMENT OF TRANSPORTATION**

KNOX COUNTY HIGHWAY 20 (1ST STREET) PROFILE

SCALE: SHEET OF SHEETS STA. TO STA.

F.A.P. RTE.	SECTION	COUNTY	TOTAL SHEETS	SHEET NO.
626	43N	KNOX	34	19
CONTRACT NO. 68B22				
ILLINOIS FED. AID PROJECT				



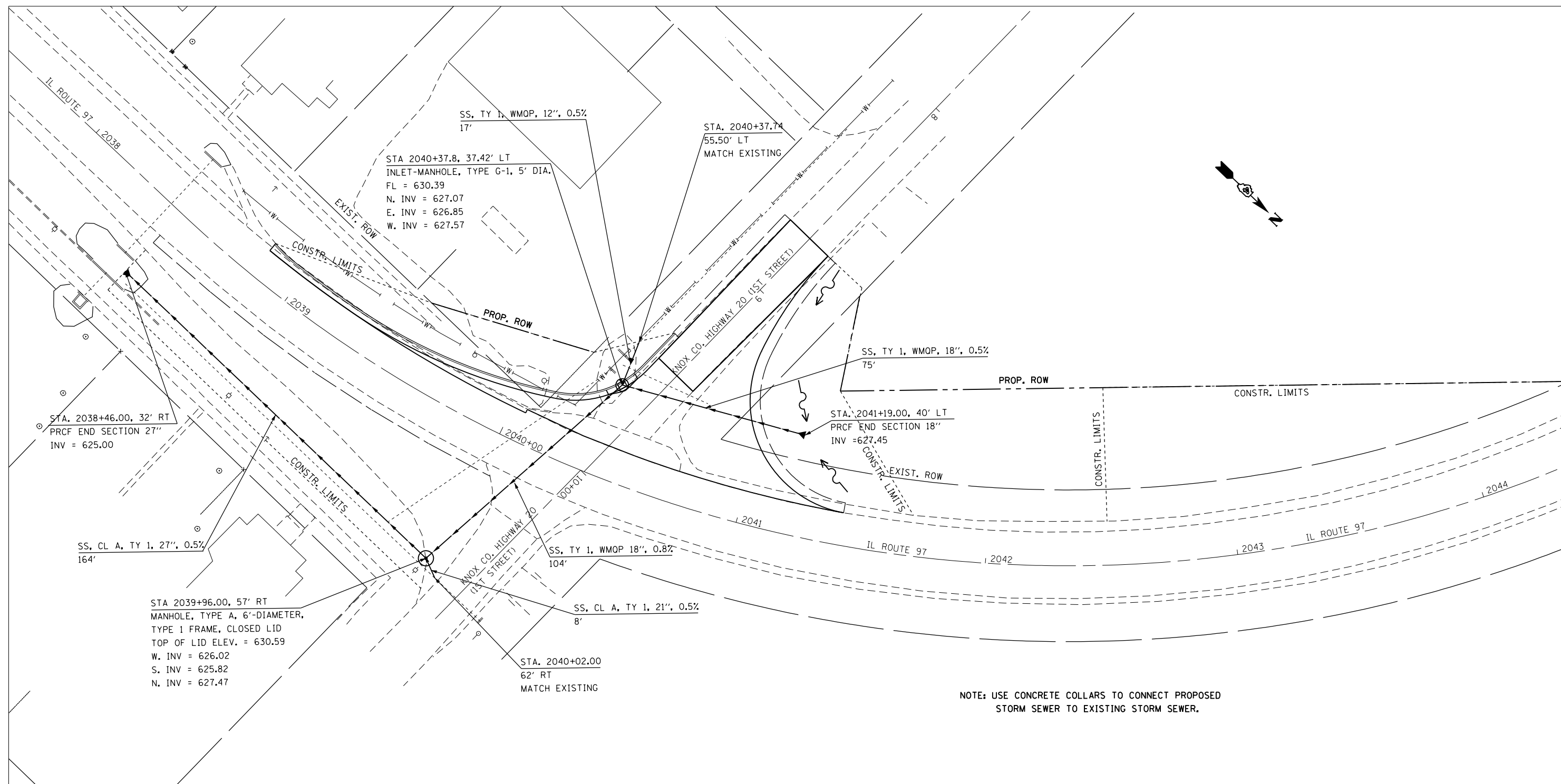
LEGEND	
	INLET AND PIPE PROTECTION
	SEEDING, CLASS 2A MULCH, METHOD 2

FILE NAME = D468B22-CADD.dgn	USER NAME = aubreygs	DESIGNED -	REVISED -
		DRAWN -	REVISED -
		CHECKED -	REVISED -
		DATE -	REVISED -
ALL SHEETS FOR JOB	PLOT DATE = 3/26/2014		

**STATE OF ILLINOIS
DEPARTMENT OF TRANSPORTATION**

EROSION AND SEDIMENT CONTROL			
SCALE:	SHEET	OF SHEETS	STA. TO STA.

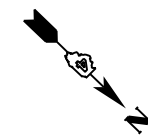
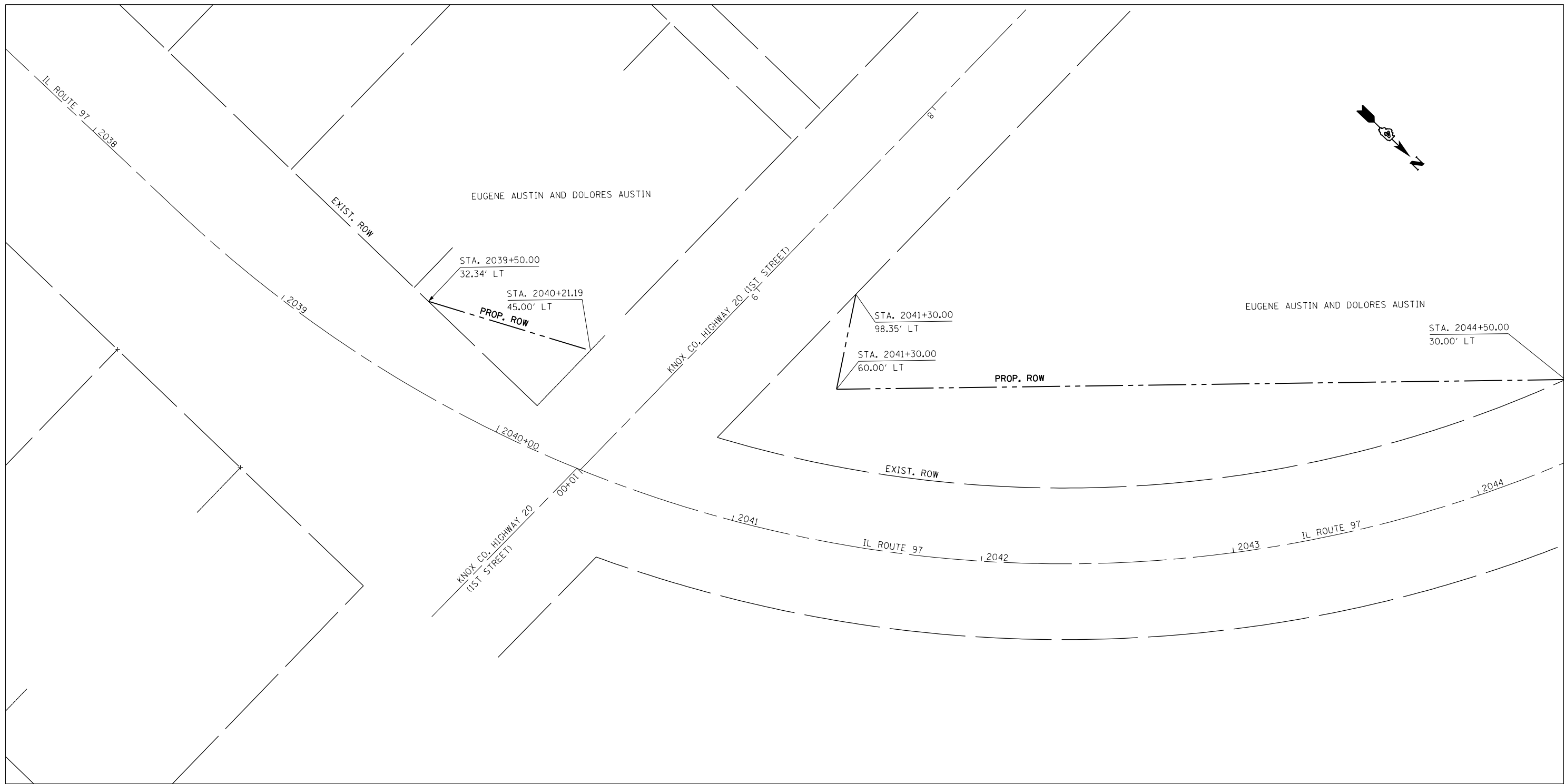
F.A.P. RTE.	SECTION	COUNTY	TOTAL SHEETS	SHEET NO.
626	43N	KNOX	34	20
CONTRACT NO. 68B22				
ILLINOIS FED. AID PROJECT				



NOTE: USE CONCRETE COLLARS TO CONNECT PROPOSED STORM SEWER TO EXISTING STORM SEWER.

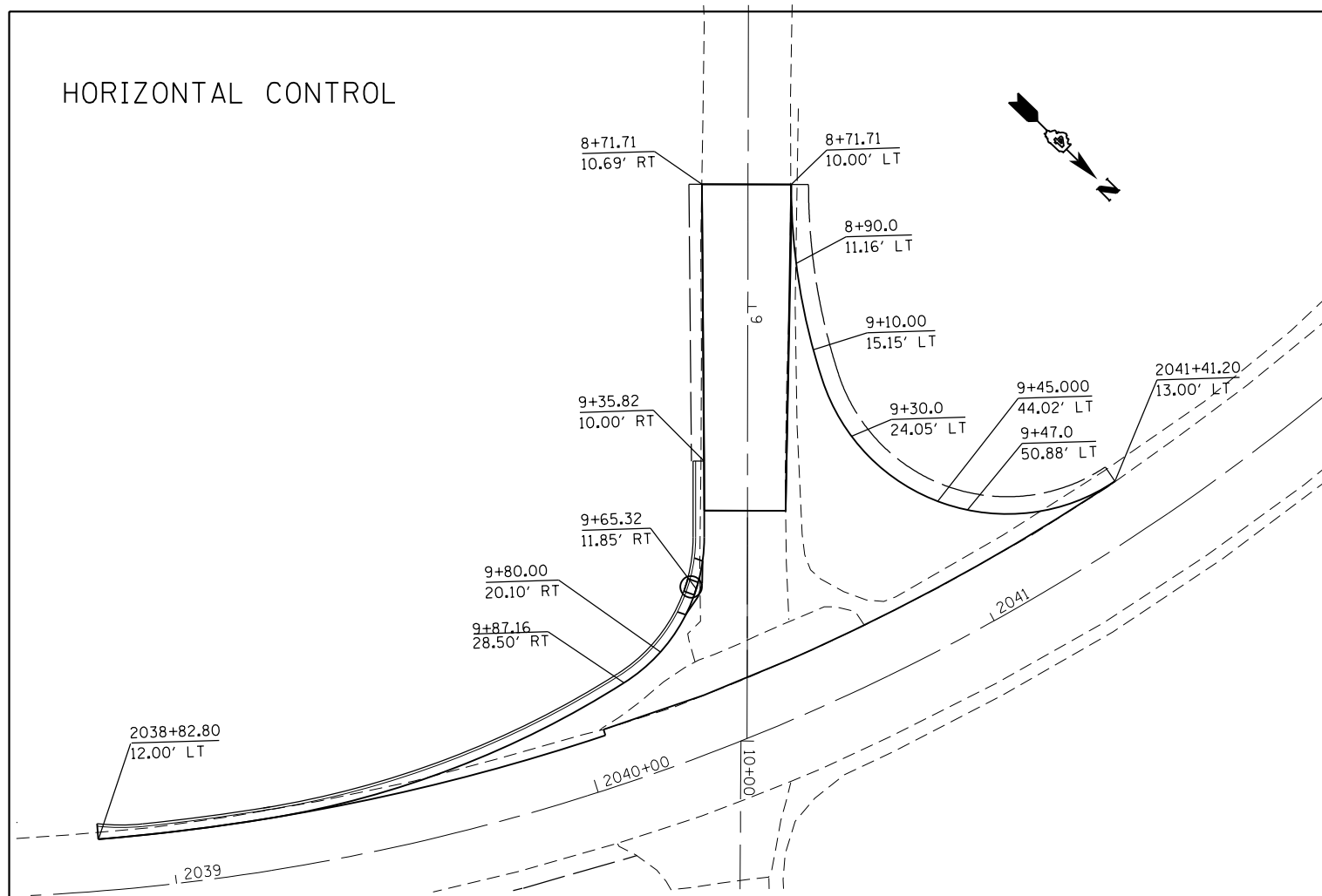


FILE NAME : D468B22-CADD.dgn	USER NAME : aubreygs	DESIGNED -	REVISED -	STATE OF ILLINOIS DEPARTMENT OF TRANSPORTATION	DRAINAGE AND UTILITIES SHEET			F.A.P. RTE.	SECTION	COUNTY	TOTAL SHEETS	SHEET NO.
	PLOT SCALE = 48.0000' / in.	CHECKED -	REVISED -					626	43N	KNOX	34	21
ALL SHEETS FOR JOB	PLOT DATE = 3/26/2014	DATE -	REVISED -	SCALE:	SHEET	OF	SHEETS	STA.	TO	STA.	ILLINOIS FED. AID PROJECT CONTRACT NO. 68B22	

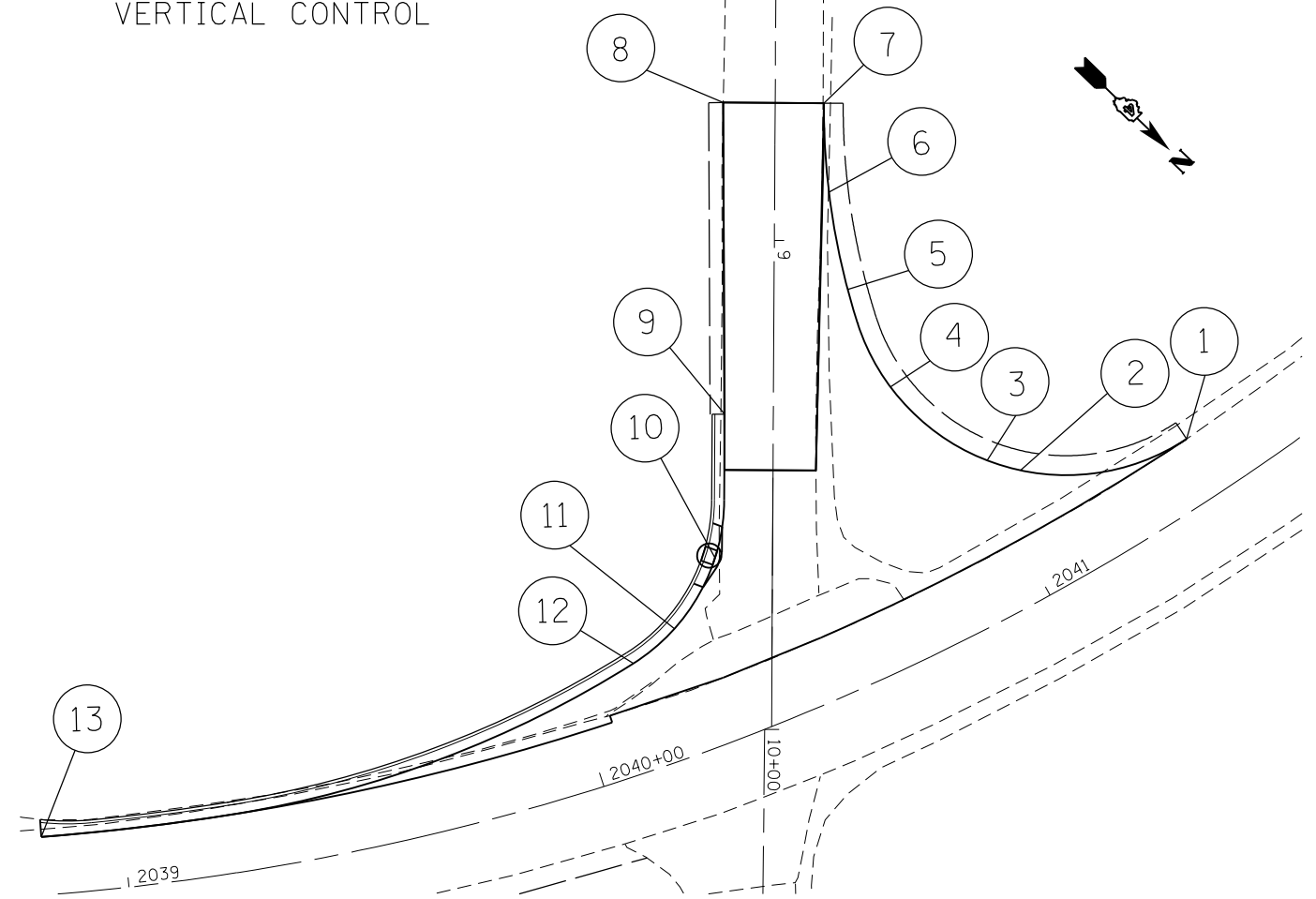


FILE NAME : D468B22-CADD.dgn	USER NAME : aubreys	DESIGNED -	REVISED -	STATE OF ILLINOIS DEPARTMENT OF TRANSPORTATION	RIGHT OF WAY PLAN				F.A.P. RTE.	SECTION	COUNTY	TOTAL SHEETS	SHEET NO.
	PLOT SCALE = 48.0000' / in.	DRAWN -	REVISED -		626	43N	KNOX	34	22				
ALL SHEETS FOR JOB	CHECKED -	REVISED -	SCALE: SHEET OF SHEETS STA. TO STA.					CONTRACT NO. 68B22					
PLOT DATE = 3/26/2014	DATE -	REVISED -	ILLINOIS FED. AID PROJECT										

HORIZONTAL CONTROL



VERTICAL CONTROL



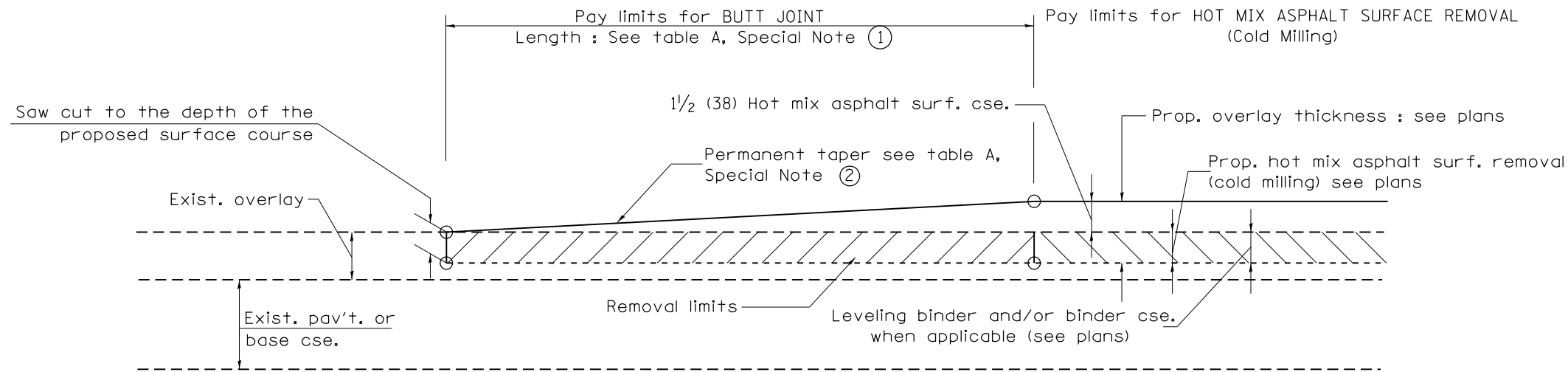
LOCATION	STATION	OFFSET	ELEVATION
KNOX COUNTY HIGHWAY 20			
1	2041+41.20	13' LT	631.78
2	9+47.00	50.88' LT	631.22
3	9+45.00	44.02' LT	631.07
4	9+30.00	24.05' LT	630.80
5	9+10.00	15.15' LT	630.95
6	8+90.00	11.16' LT	630.92
7	8+71.71	10' LT	630.89
8	8+71.71	10.69' RT	630.99
9	9+35.82	10' RT	631.05
10	9+65.32	11.85' RT	630.39
11	9+80.00	20.10' RT	630.26
12	9+87.16	28.5' RT	630.02
13	2038+82.80	13' LT	628.96

FILE NAME = D468B22-CADD.dgn	USER NAME = aubreygs	DESIGNED -	REVISED -
		DRAWN -	REVISED -
		CHECKED -	REVISED -
ALL SHEETS FOR JOB	PLOT DATE = 3/26/2014	DATE -	REVISED -

**STATE OF ILLINOIS
DEPARTMENT OF TRANSPORTATION**

INTERSECTION DETAIL KNOX COUNTY HIGHWAY 20			
SCALE:	SHEET	OF SHEETS	STA. TO STA.

F.A.P. RTE.	SECTION	COUNTY	TOTAL SHEETS	SHEET NO.
626	43N	KNOX	34	23
CONTRACT NO. 68B22				
ILLINOIS FED. AID PROJECT				



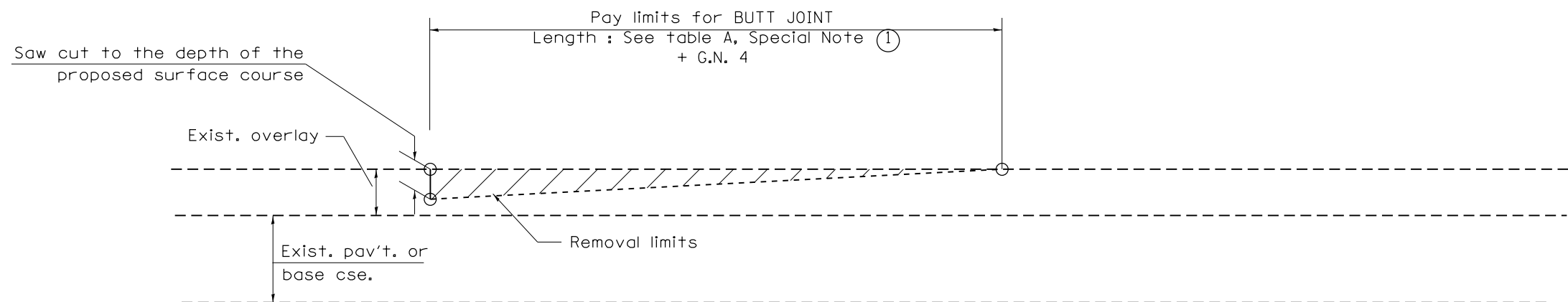
CASE 1 : WITH HOT MIX ASPHALT SURFACE REMOVAL (COLD MILLING)

**TABLE A
TAPER RATES**

SPECIAL NOTE NUMBER	ELEMENT	MAINLINE INTERSTATES & 4-LANE EXPRESSWAYS	ALL OTHERS
①	BUTT JOINT TAPER RATE	1:480	1:240
②	TEMPORARY RAMP TAPER RATE	1:80	1:40

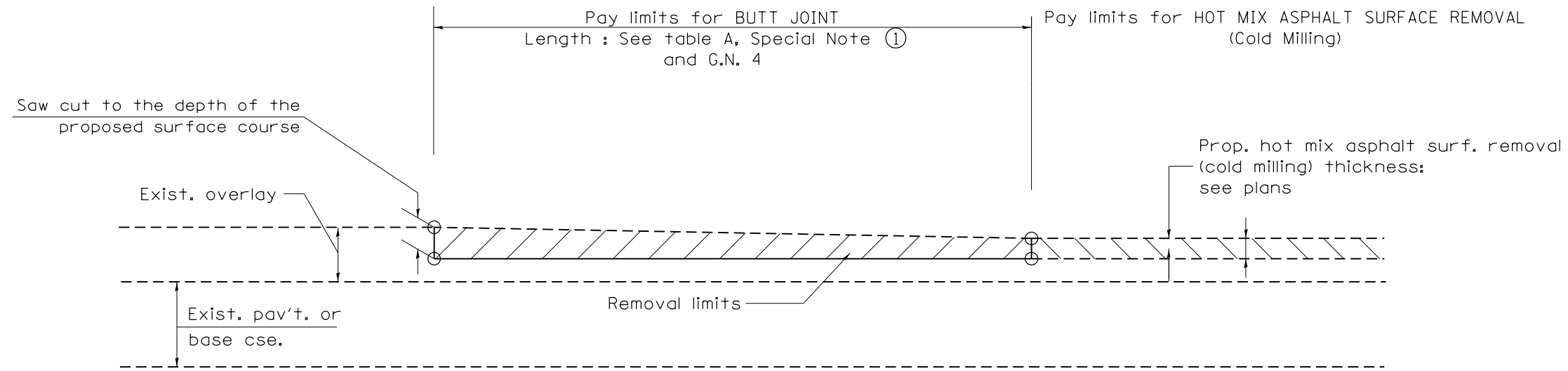
GENERAL NOTES

1. The work shall be done in accordance with Article 406.08 and the Special Provision for Butt Joints.
2. The pavement surface to be removed may be either bituminous or P.C. concrete. The work shall be performed in accordance with Article 440.04 and the Special Provisions for Butt Joints.
3. The saw cut joints shall be primed just prior to the placing of bituminous material. The work will be in accordance with the applicable portions of Article 406.05.
4. The length of butt joint is based on the taper rate times change in cold milling depth within the butt joint pay limits, unless otherwise indicated.

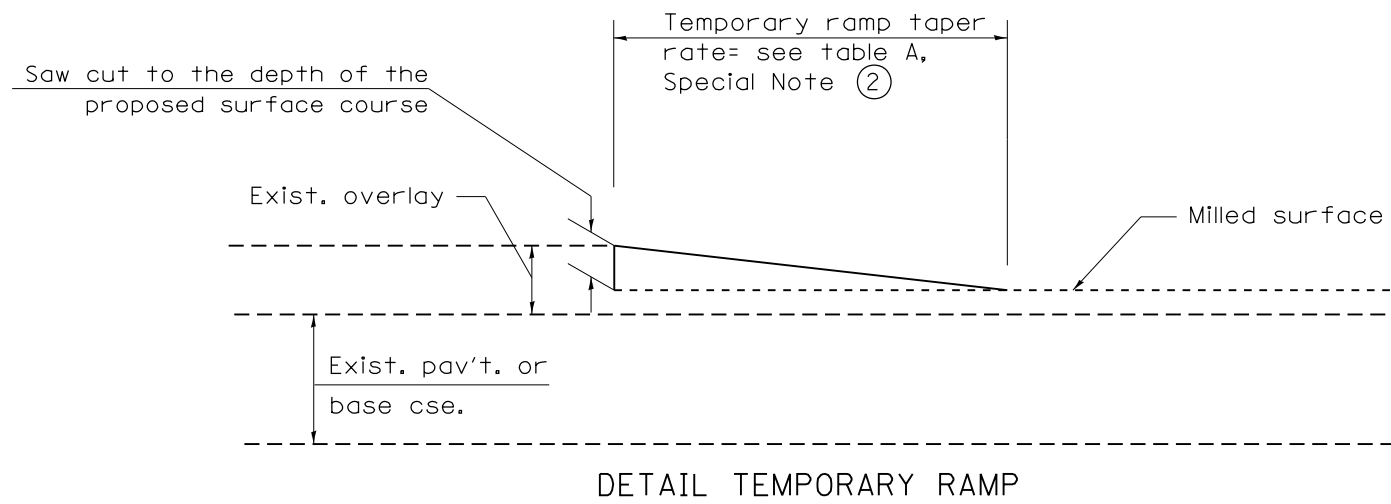


CASE 2 : NO HOT MIX ASPHALT SURFACE REMOVAL (COLD MILLING)

All dimensions are in inches (millimeters) unless otherwise noted.

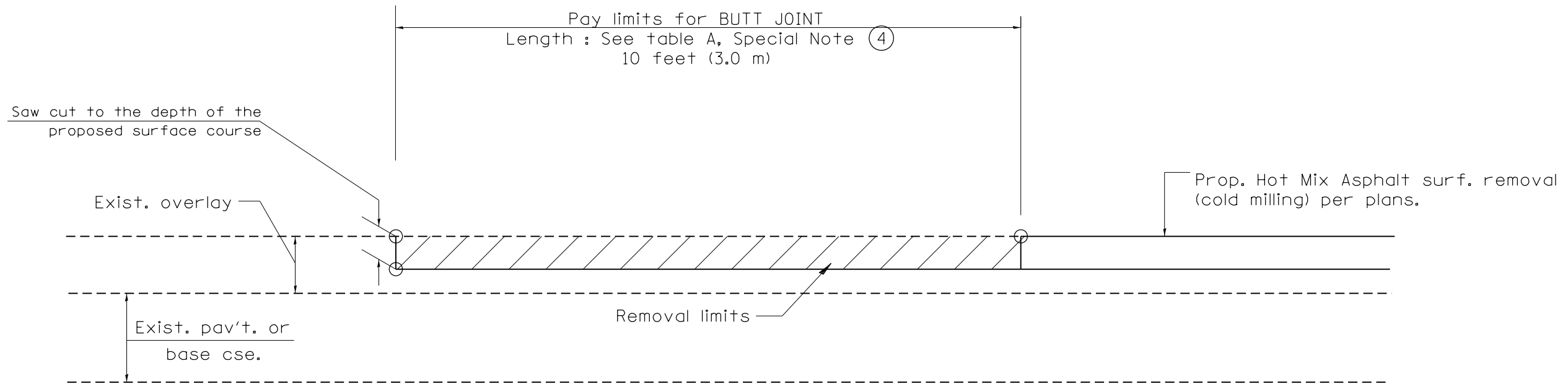


CASE 4 : NO HOT MIX ASPHALT SURFACE REMOVAL (COLD MILLING)
TIE-IN TO EXISTING BITUMINOUS TAPER



All dimensions are in inches (millimeters) unless otherwise noted.

				STATE OF ILLINOIS	BUTT JOINTS	F.A.P. RTE.	SECTION	COUNTY	TOTAL SHEETS	SHEET NO.
				DEPARTMENT OF TRANSPORTATION		626	43N		34	25
				NOT TO SCALE		SHT. 2 OF 3		CONTRACT NO. 68B22		
						FED. ROAD DIST. NO. ILLINOIS FED. AID PROJECT				



CASE 4 : SINGLE LIFT OVERLAY WITH EQUIVALENT DEPTH
HOT MIX ASPHALT SURFACE REMOVAL (COLD MILLING)
TIE-IN TO EXISTING BITUMINOUS TAPER

All dimensions are in inches (millimeters) unless otherwise noted.

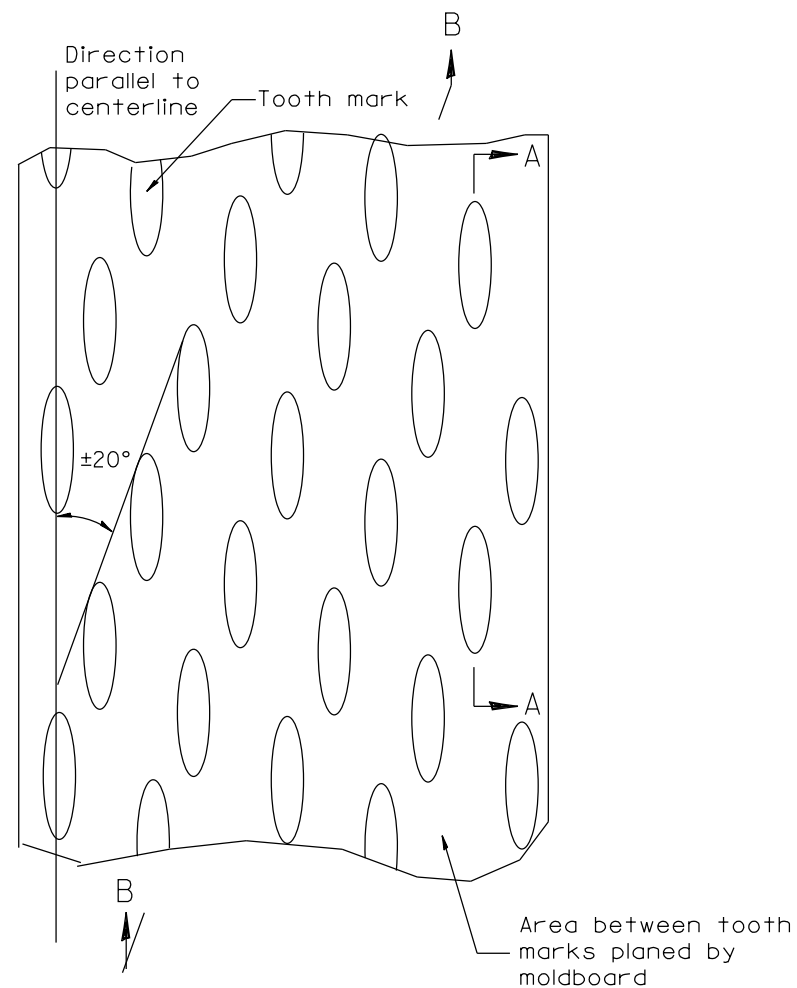
**STATE OF ILLINOIS
DEPARTMENT OF TRANSPORTATION**

BUTT JOINTS

NOT TO SCALE

SHT. 3 OF 3
CADD STD. 406101-D4

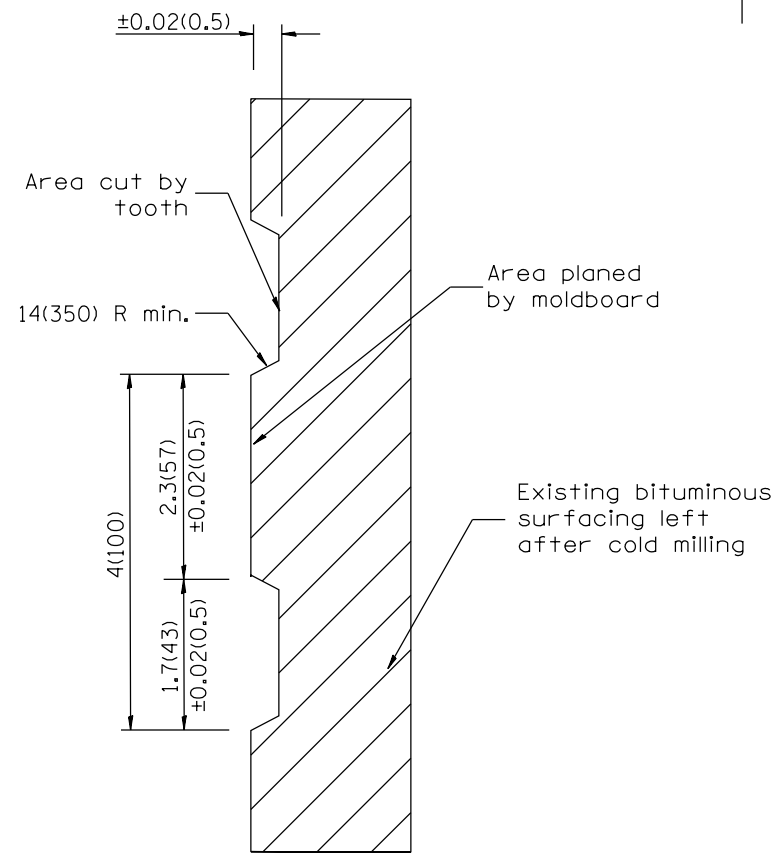
F.A.P. RTE.	SECTION	COUNTY	TOTAL SHEETS	SHEET NO.
626	43N	KNOX	34	26
FED. ROAD DIST. NO.			ILLINOIS FED. AID PROJECT	
			CONTRACT NO. 68B22	



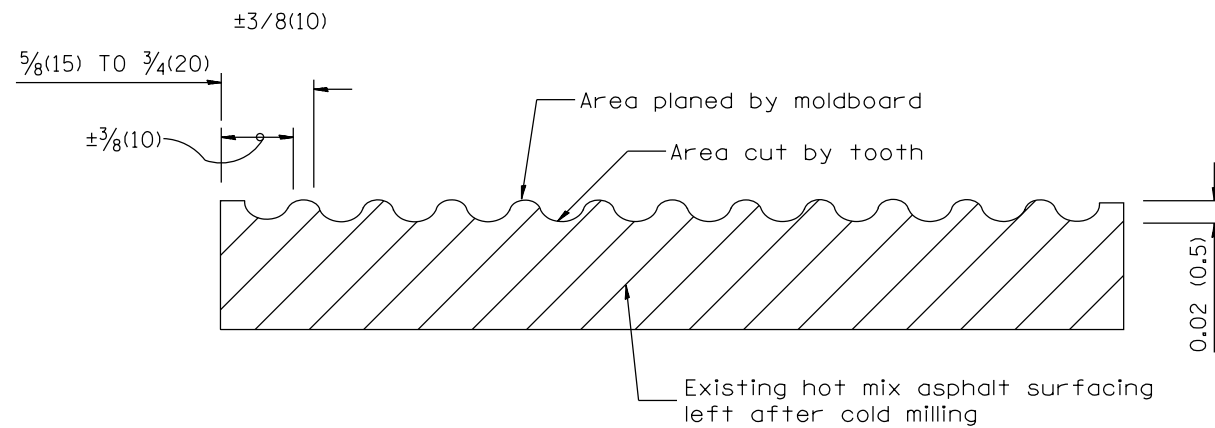
PLAN

General notes:

1. Coldmilling shall consist of two processes: Cutting with carbide teeth mounted on a rotating drum, and planing with a moldboard mounted immediately behind the cutting drum.
2. Other similar patterns will be acceptable if they consist of a smooth, flat, planed surface interspersed with a pattern of discontinuous longitudinal striations.



SECTION A-A



SECTION B-B PROJECTED
PERPENDICULAR TO CENTERLINE

All dimensions are in inches (millimeters) unless otherwise noted.

01-01-97	RENUM. C-104.01, NEW REVISION BOX	T.P.
04-20-98	REMOVED MILLING DETAIL FROM STANDARD	J.A.
09-08-98	CORRECT NOTE LEADER PLACEMENT	R.W.
10-16-06	REVISED TO 2007 SPEC.	M.A.

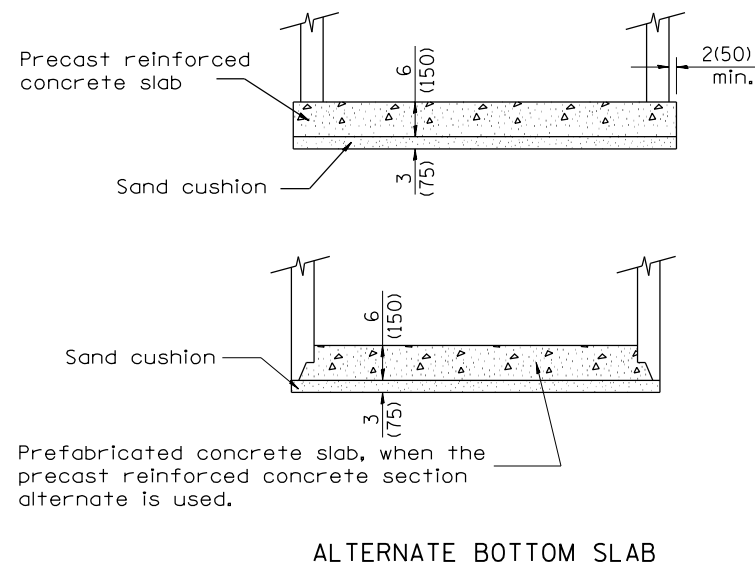
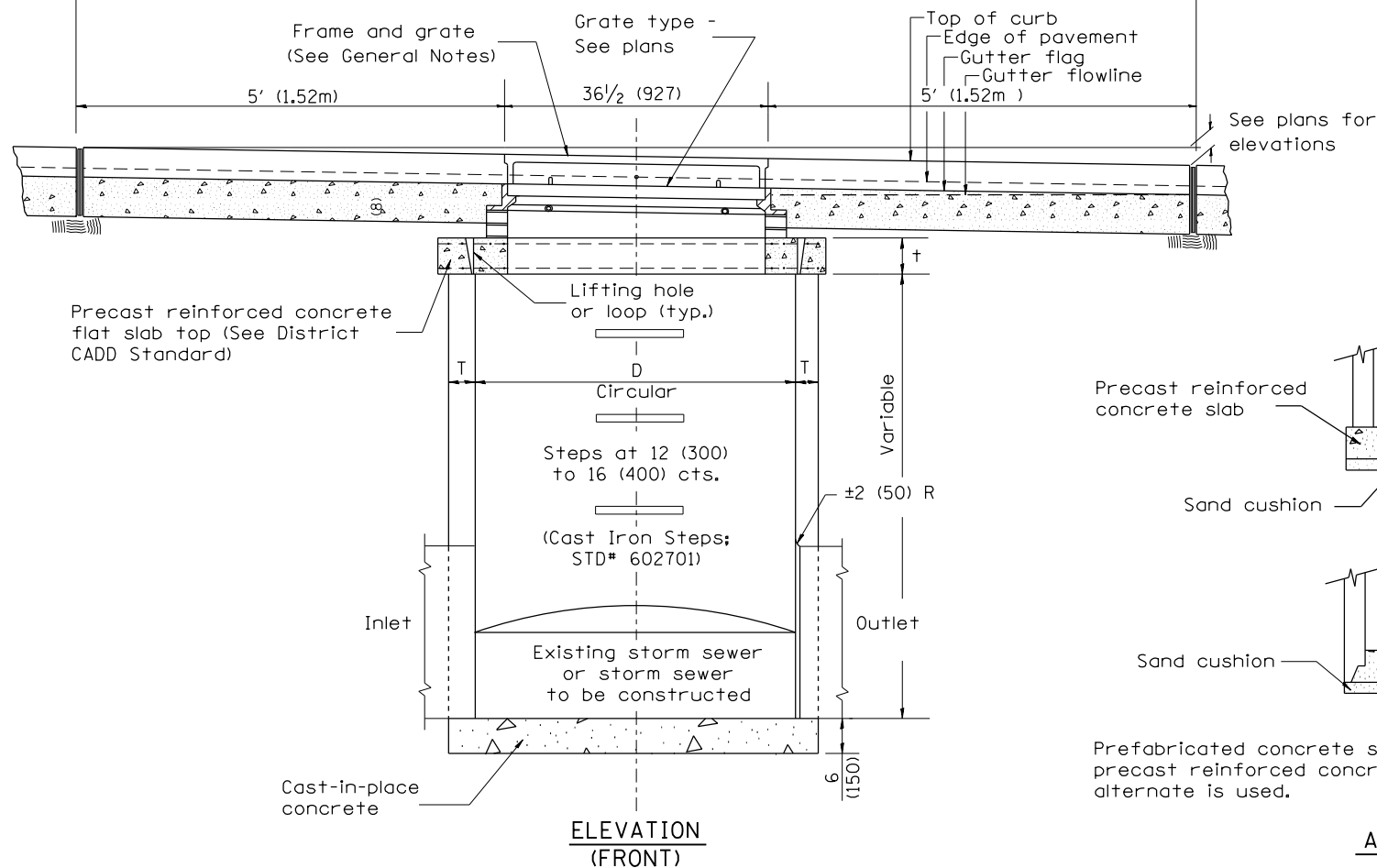
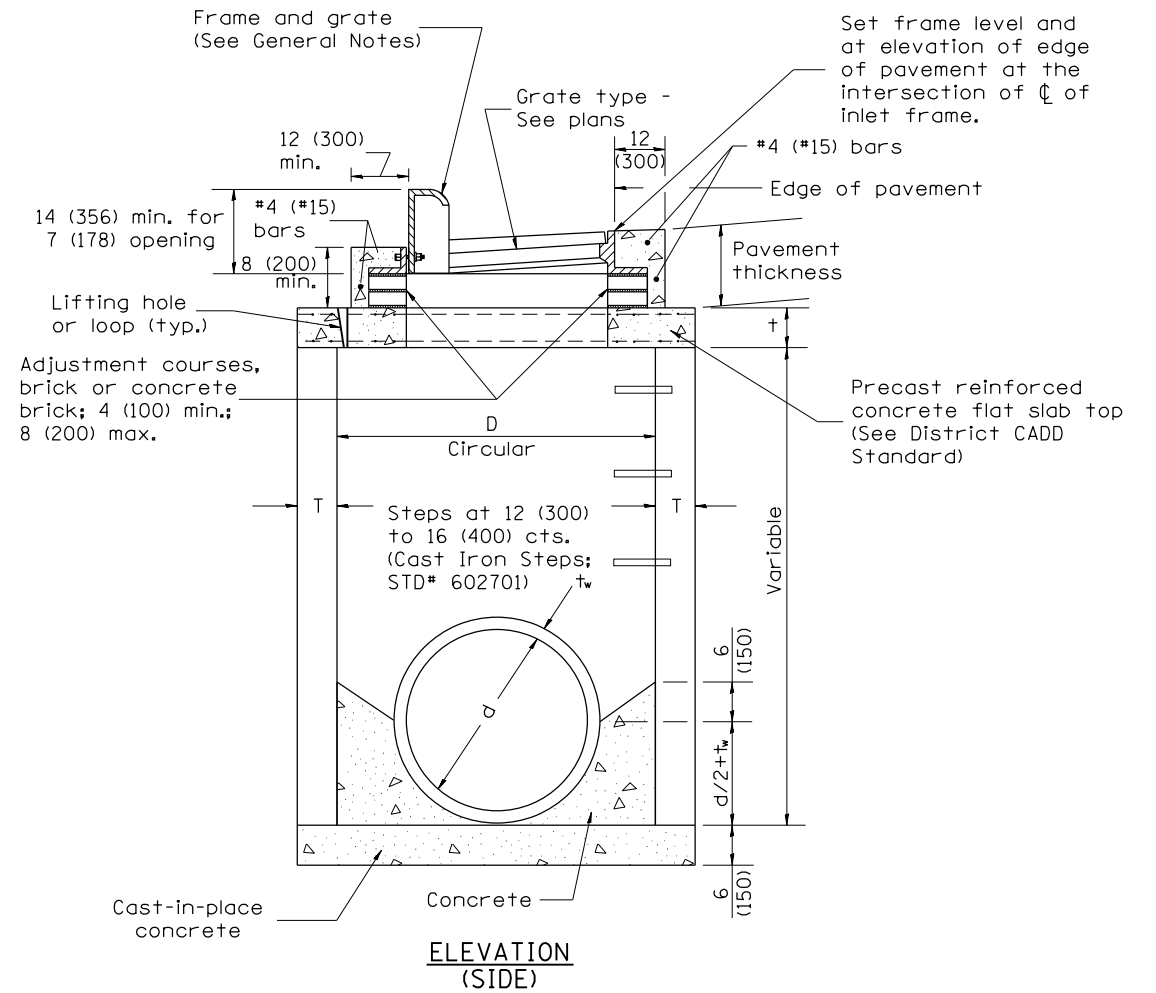
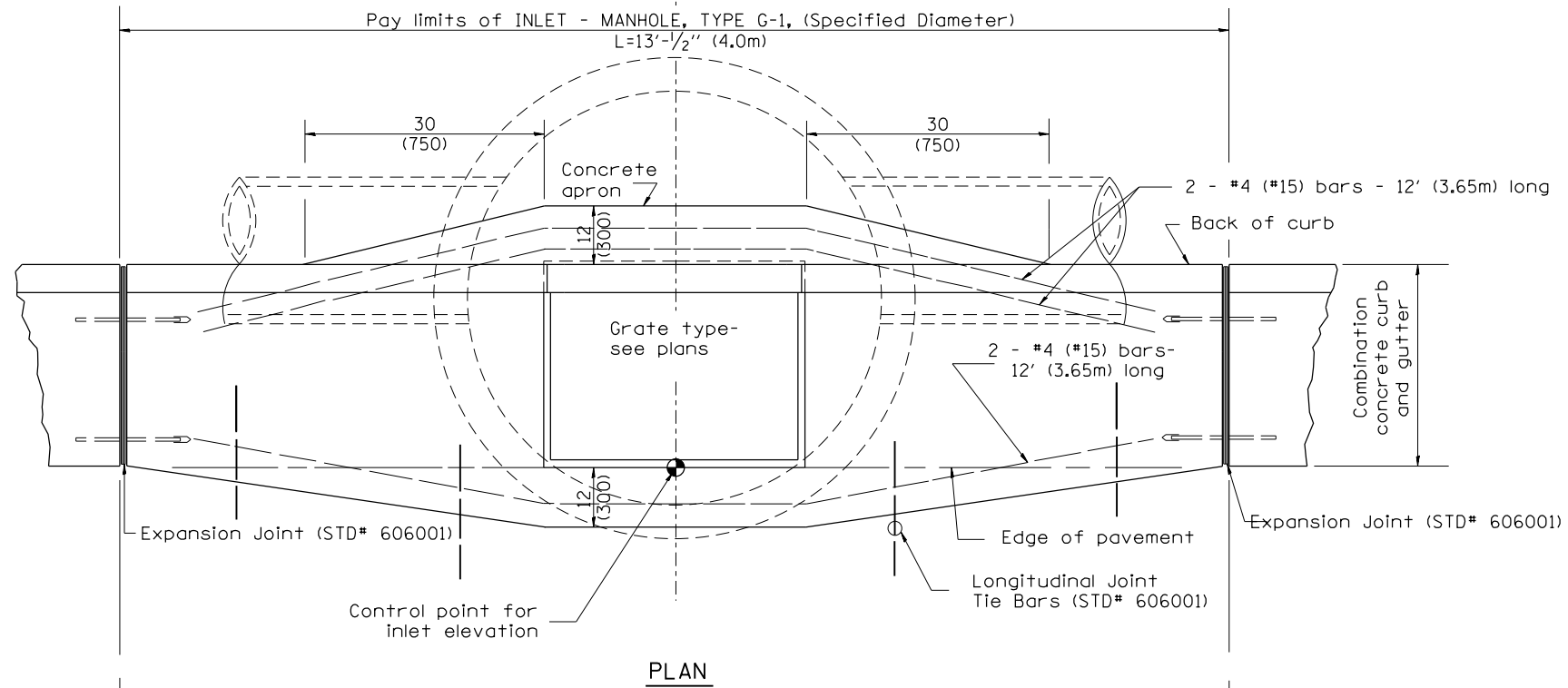
STATE OF ILLINOIS
DEPARTMENT OF TRANSPORTATION

HOT MIX ASPHALT SURFACE REMOVAL (COLD MILLING)

NOT TO SCALE

CADD STD. 440001-D4

F.A.P. RTE.	SECTION	COUNTY	TOTAL SHEETS	SHEET NO.
626	43N	KNOX	34	27
CONTRACT NO. 68B22				
FED. ROAD DIST. NO. ILLINOIS FED. AID PROJECT				



TABLE

D	T	+
4' (1.2m)	5 (125)	6 (150)
5' (1.5m)	6 (150)	8 (200)
6' (1.8m)	7 3/4 (195)	8 (200)
8' (2.4m)	9 (225)	10 (250)

GENERAL NOTES

1. Inlet-manhole construction shall be in accordance with Section 602 of the Standard Specifications.
2. Combination concrete curb and gutter shall be constructed in accordance with Section 606 of the Standard Specifications.
3. See District CADD Standard 604001-D4 for frame and grates.
4. See District CADD Standard for precast reinforced concrete flat slab top.

All dimensions are in inches (millimeters) unless otherwise noted.

DATE	REVISION	BY
01-01-97	RENUM. B-4.05, NEW REVISION BOX	
10-99	REVISION TO GENERAL NOTES	J.A.
02-00	REVISION TO DESIGNER NOTES	J.A.
10-16-06	REVISED TO 2007 SPEC.	M.A.

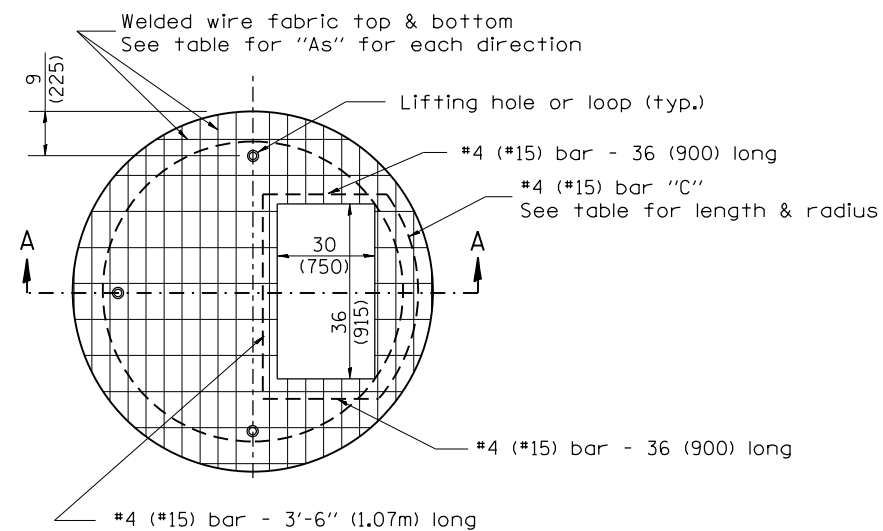
STATE OF ILLINOIS
DEPARTMENT OF TRANSPORTATION

INLET-MANHOLE, TYPE G-1

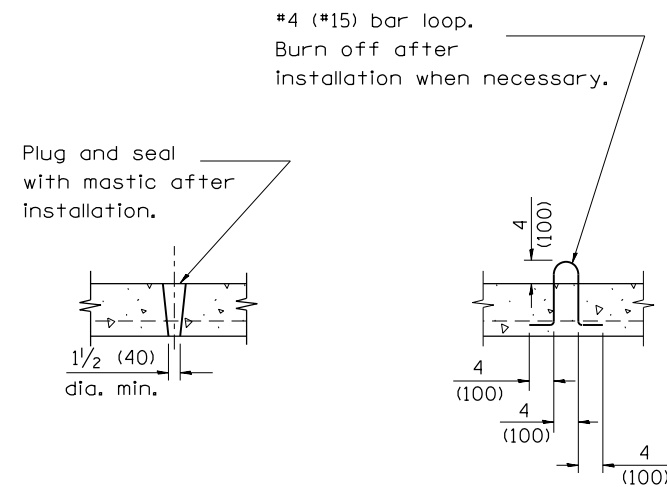
NOT TO SCALE

CADD STD. 602021-D4

F.A.P. RTE.	SECTION	COUNTY	TOTAL SHEETS	SHEET NO.
626	43N	KNOX	34	29
CONTRACT NO. 68B22				
FED. ROAD DIST. NO. ILLINOIS FED. AID PROJECT				

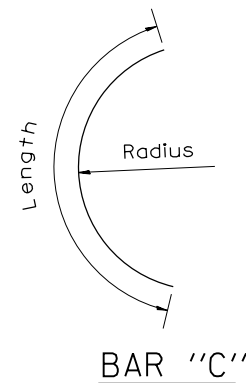


PLAN



LIFTING HOLE OR LIFTING LOOP
TYPICAL

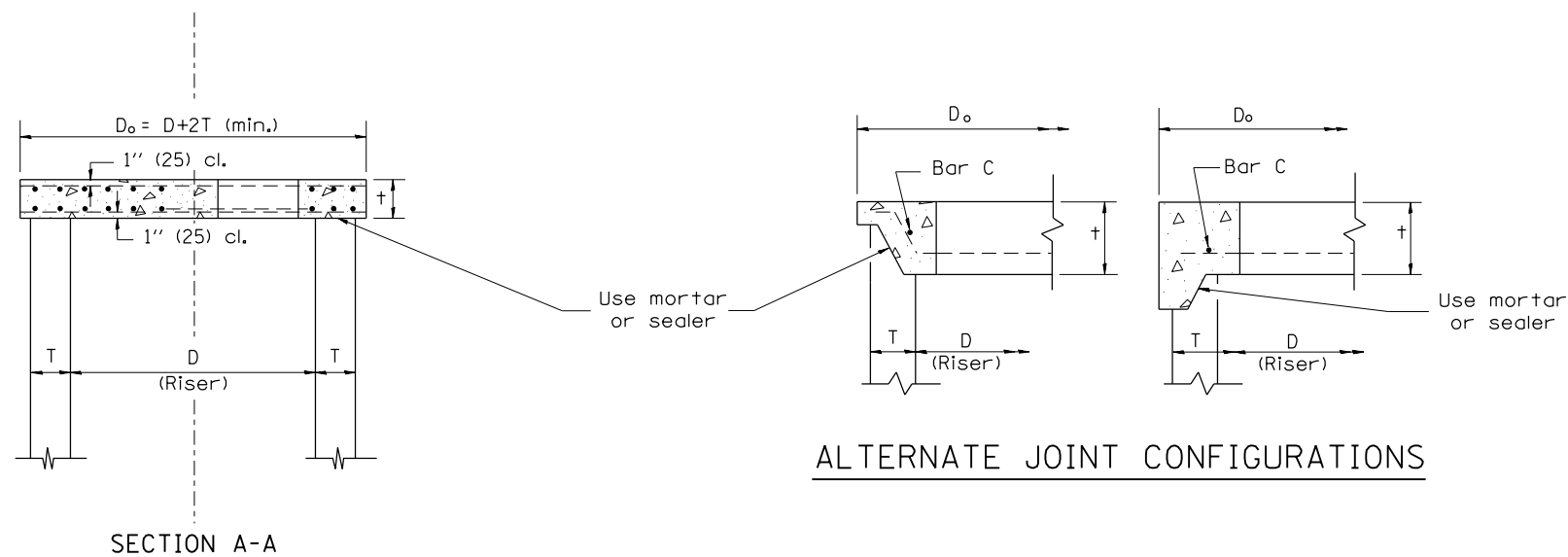
(3 required per slab)



BAR "C"

TABLE

D	T	D _o (min.)	t	Reinforcement "As" W.W.F. each direction	Bar size	No. 15 (No. 4) Bar C	
						Length	Radius
4' (1.2m)	5 (125)	4'-10" (1.5m)	6 (150)	0.70 sq. inch/lin. ft. (1480mm ² /m)	No. 15 (No. 5)	1.35m (4'-6")	660 (26)
5' (1.5m)	6 (150)	6'-0" (1.8m)	8 (200)	0.70 sq. inch/lin. ft. (1480mm ² /m)	No. 15 (No. 5)	1.5m (5'-0")	810 (32)
6' (1.8m)	7 3/4 (195)	7'-3 1/2" (2.2m)	8 (200)	0.88 sq. inch/lin. ft. (1860mm ² /m)	No. 20 (No. 6)	1.8m (6'-0")	965 (38)
8' (2.4m)	9 (225)	9'-6" (2.9m)	10 (250)	0.88 sq. inch/lin. ft. (1860mm ² /m)	No. 20 (No. 6)	2.3m (7'-6")	1.27m (4'-2")



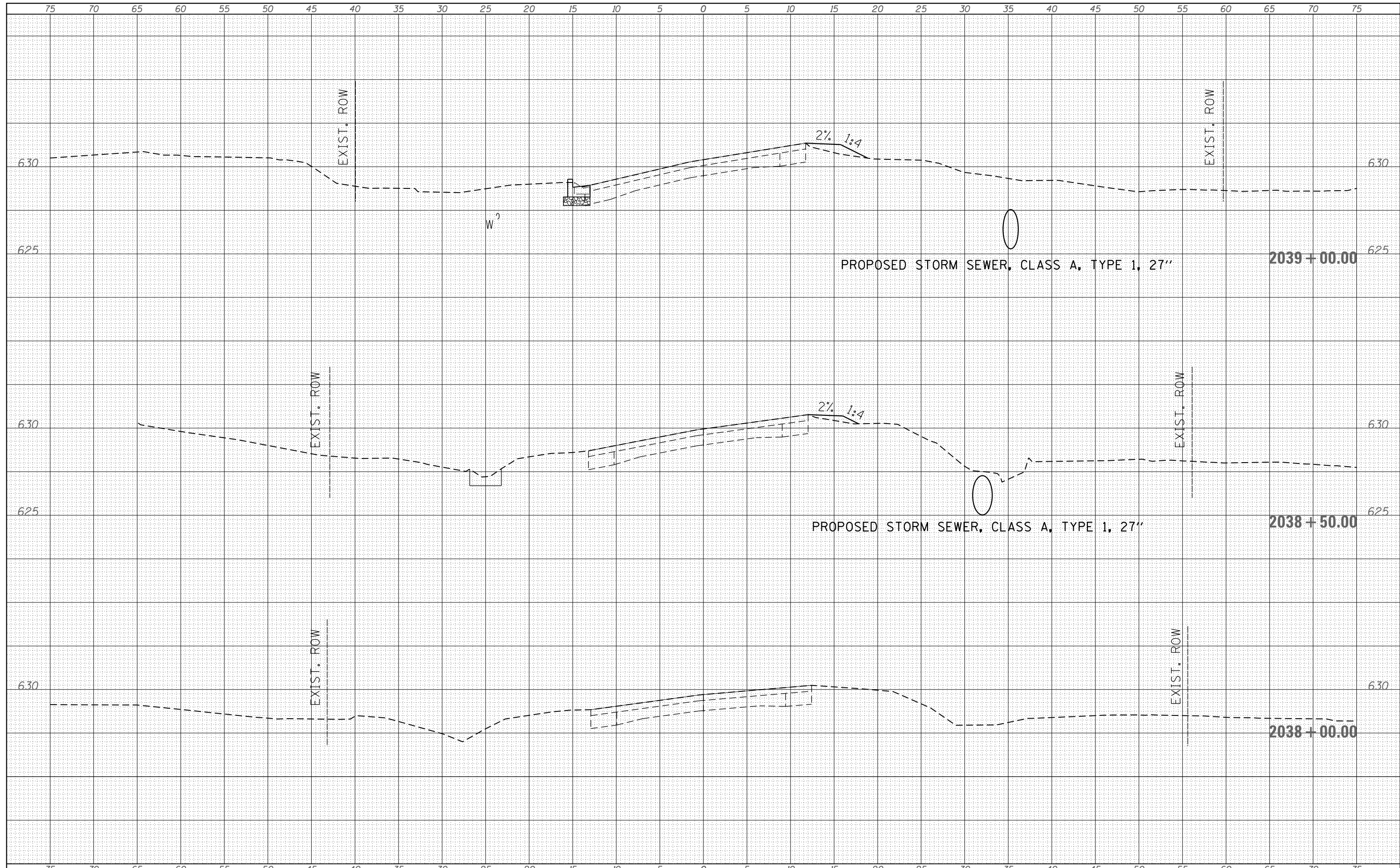
GENERAL NOTES

1. The precast reinforced concrete flat slab top shall be used with INLET-MANHOLE, TYPE G-1 and INLET-MANHOLE, TYPE G-1, SPECIAL.
2. Joint configuration and dimensions of flat slab top shall match and fit the riser joint detail.
3. Lifting devices shall be approved by the Engineer.

All dimensions are in inches (millimeters) unless otherwise noted.

DATE	
BY	
ORIGINAL SURVEY NO.	
SURVEYED	
PLOTTED	
TEMPLATE	
AREAS CHECKED	
FINAL SURVEY NO.	
NOTE BOOK	
AREAS CHECKED	

DATE	
BY	
ORIGINAL SURVEY NO.	
SURVEYED	
PLOTTED	
TEMPLATE	
AREAS CHECKED	
FINAL SURVEY NO.	
NOTE BOOK	
AREAS CHECKED	



FILE NAME = D468B22-CADD.dgn

USER NAME = aubreys	DESIGNED -	REVISED -
PLOT SCALE = 10.0000' / in.	DRAWN -	REVISED -
CROSS SECTIONS	CHECKED -	REVISED -
	DATE -	REVISED -

**STATE OF ILLINOIS
DEPARTMENT OF TRANSPORTATION**

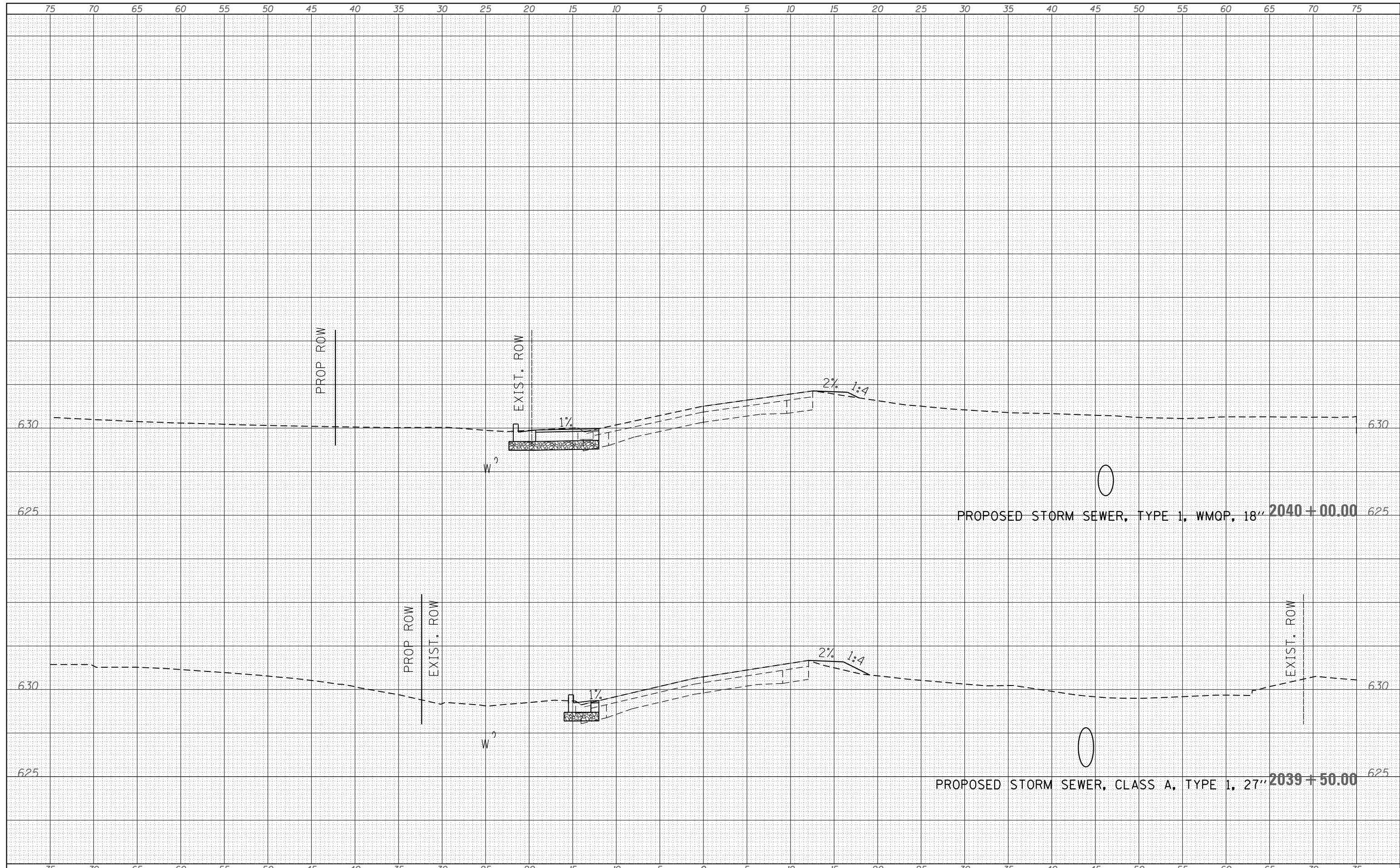
IL 97 CROSS SECTIONS

SCALE: SHEET OF SHEETS STA. 2038+00.00 TO STA. 2039+00.00

F.A.P. RTE.	SECTION	COUNTY	TOTAL SHEETS	SHEET NO.
626	43N	KNOX	34	32
CONTRACT NO. 68B22				
ILLINOIS FED. AID PROJECT				

DATE	
BY	
FINAL SURVEY	SURVEYED
NOTE BOOK	PLOTTED
NO.	TEMPLATE
	AREAS CHECKED

DATE	
BY	
ORIGINAL SURVEY	SURVEYED
NOTE BOOK	PLOTTED
NO.	TEMPLATE
	AREAS CHECKED



FILE NAME = D468B22-CADD.dgn

USER NAME = aubreys	DESIGNED -	REVISED -
PLOT SCALE = 10.0000' / in.	DRAWN -	REVISED -
PLOT DATE = 3/26/2014	CHECKED -	REVISED -
	DATE -	REVISED -

**STATE OF ILLINOIS
DEPARTMENT OF TRANSPORTATION**

IL 97 CROSS SECTIONS

SCALE: SHEET OF SHEETS STA. 2039+50.00 TO STA. 2040+50.00

F.A.P. RTE.	SECTION	COUNTY	TOTAL SHEETS	SHEET NO.
626	43N	KNOX	34	33
CONTRACT NO. 68B22				
ILLINOIS FED. AID PROJECT				

