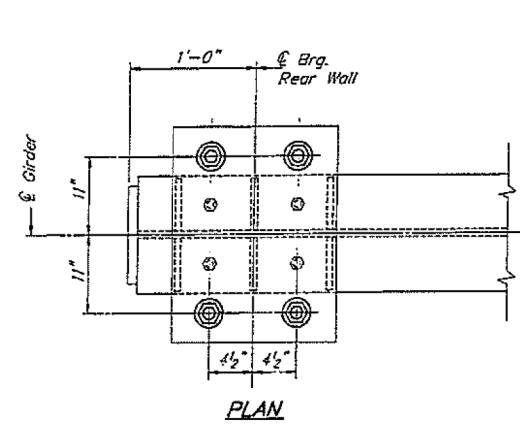
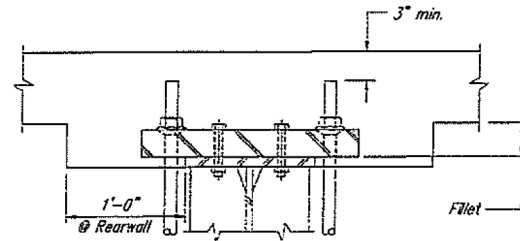


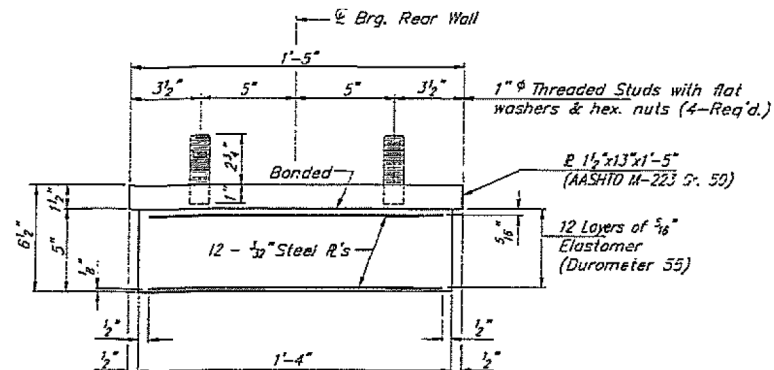
LOCATION 1 S.N. 062-0050 INFORMATION ONLY



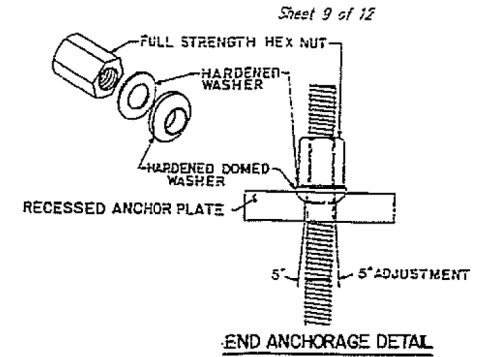
PLAN



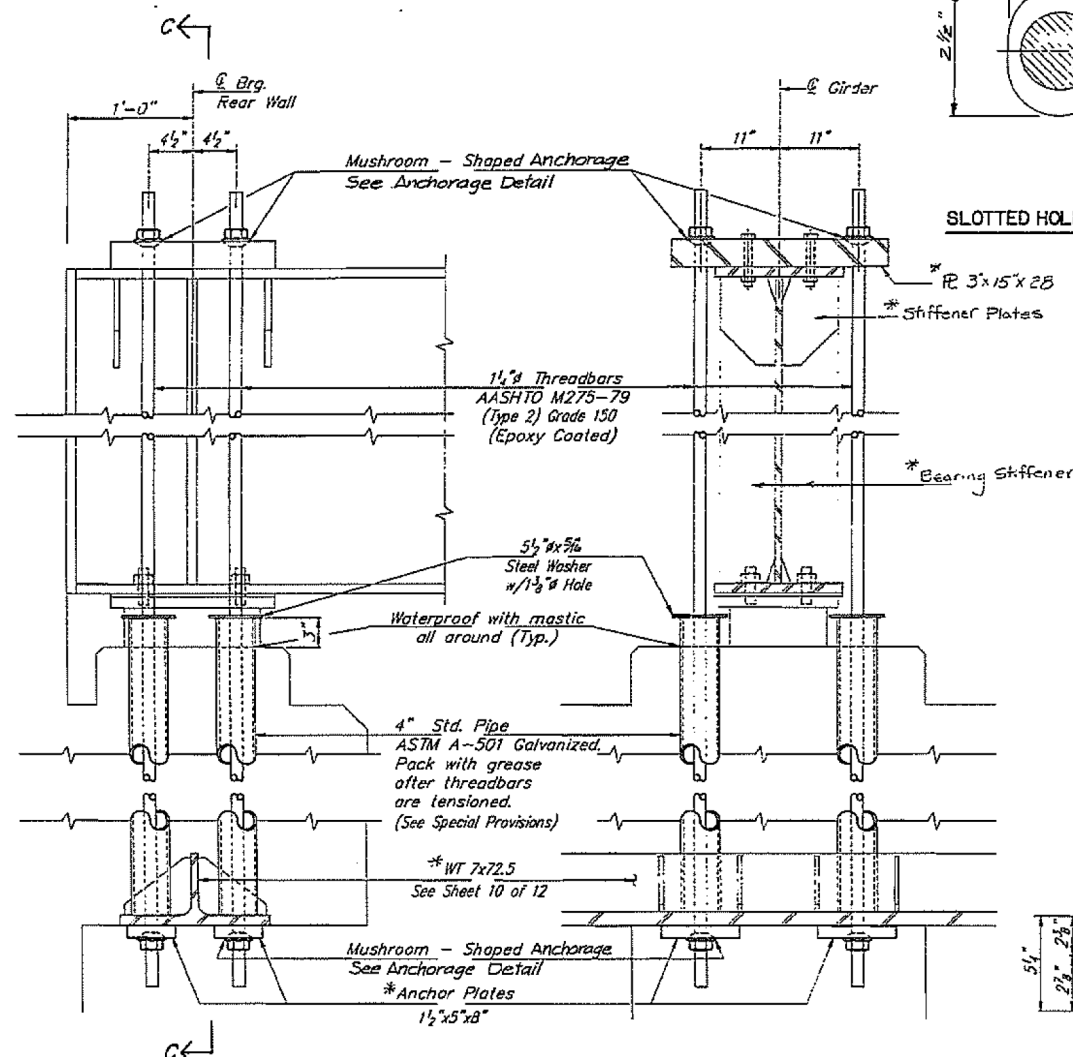
FILLET DETAIL AT REARWALL
(5'-0" in Length)



BEARING ASSEMBLY
(16 - Required)

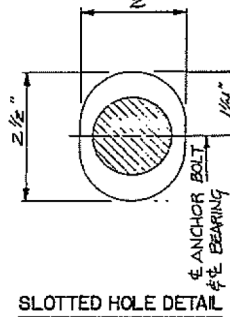


END ANCHORAGE DETAIL

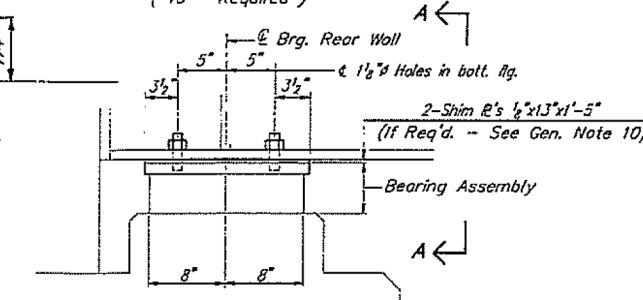


TIEDOWN DEVICE

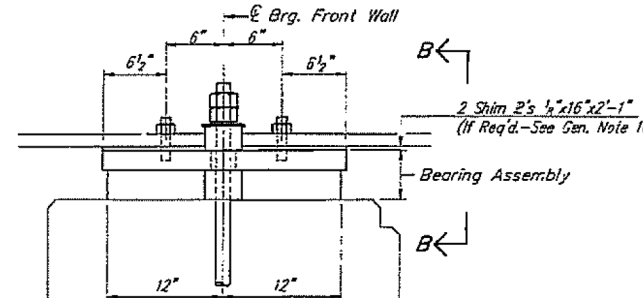
Initially stress each threadbar to 36 kips after anchorage is set. After completion of Pouring Sequence 1 and 2 of the deck slab stress each threadbar an additional 14 kips.



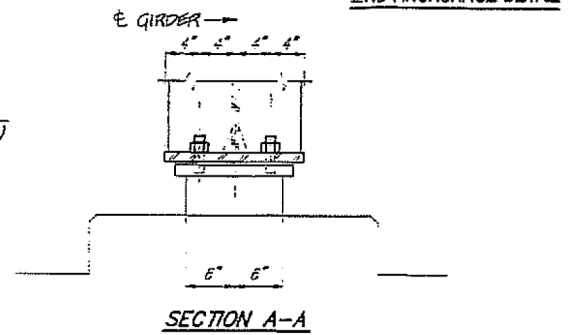
SLOTTED HOLE DETAIL



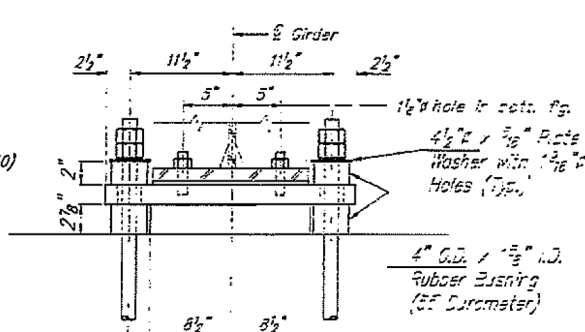
ELEVATION AT REAR WALL



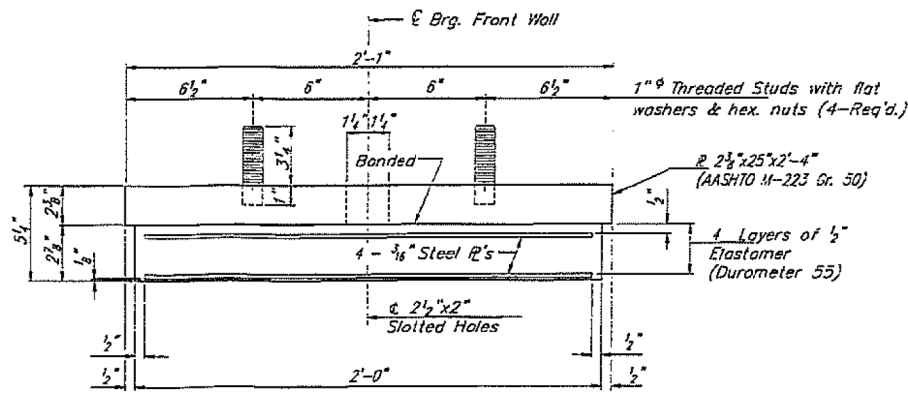
ELEVATION AT FRONT WALL



SECTION A-A



SECTION B-B



BEARING ASSEMBLY
(16 - Required)

BILL OF MATERIAL

| ITEM | Unit | Total |
|-------------------------------------|------|-------|
| Tiedown Device | Each | 16 |
| Elastomeric Bearing Assembly Type 1 | Each | 32 |

BEARINGS & TIEDOWNS
ILL. RTE. 17 OVER F.A.P. ROUTE 412
F.A.P. ROUTE 412 - SEC. 62-2HB-2
MARSHALL COUNTY
STATION 227+49.57
STRUCTURE NUMBER 062-0050

| | | |
|---------------------|--|---------------------|
| DESIGNED BY: C.D.P. | | DATE: 8/6/2011 |
| DRAWN BY: M.D.M. | | SCALE: 1/8" = 1'-0" |
| CHECKED BY: M.L.M. | | DATE: 9-30-08 |
| IN CHARGE: T.E.H. | | |

| | | | |
|---|---------------------|------------|-----------|
| FILE NAME = Contract 68B47 bridge painting 2014.dgn | USER NAME = keathbr | DESIGNED - | REVISED - |
| | | DRAWN - | REVISED - |
| | | CHECKED - | REVISED - |
| | | DATE - | REVISED - |

STATE OF ILLINOIS
DEPARTMENT OF TRANSPORTATION

LOCATION 1 BEARINGS /TIEDOWNS STRUCTURE 062-0050

SCALE: SHEET OF SHEETS STA. TO STA.

| | | | | |
|-----------------------------|---------|---------|--------------------|-----------|
| F.A. RTE. | SECTION | COUNTY | TOTAL SHEETS | SHEET NO. |
| VAR D4 BRIDGE PAINTING 2014 | | VARIOUS | 21 | 8 |
| | | | CONTRACT NO. 68B47 | |
| ILLINOIS FED. AID PROJECT | | | | |