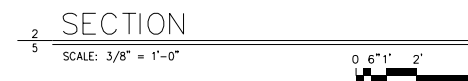


5 SCALE: $3/8" = 1'-0"$ 0 6" 1' 2'



SCALE: 1/4" = 1'-0"

ALL REMOVAL WORK TO BE INCLUDED IN THE BID PRICE FOR
DRYWALL AND PAINTING WORK

SYMBOL	DESCRIPTION	HARDWARE	REMARKS
①	3'-0" x 7'-0" x 1 3/4", 18GA. HOLLOW METAL DOOR, FLUSH PANEL W/ 16GA. STEEL FRAME & (3)4" FULL MORTISE HINGES.	BORE LOCK W/ DEAD LOCKING LATCH BOLT, AND LEVER HANDLE W/ KEYWAY.	EXISTING REMOVE DOOR AND FRAME AND REINSTALL TO PROVIDE ROOM FOR PROPOSED VIDEO WALL
②	(2) 2'-6" x 7'-0" x 1 3/4", 18GA. HOLLOW METAL DOUBLE DOOR, FLUSH PANELS W/ 16GA. STEEL FRAME & (3)4" FULL MORTISE HINGES E.A. PANEL.	BORE LOCK W/ DEAD LOCKING LATCH BOLT, FLUSH BOLT ON INACTIVE LEAF, AND LEVER HANDLE W/ KEYWAY.	EXISTING REMOVE DOOR AND FRAME AND LOCK IN PROPOSED DOOR AND DISPOSE OF DOOR AND FRAME OFF JOB SITE
③	(1) 3'-6" x 7'-0" x 1 3/4", 18GA. HOLLOW METAL DOOR, FLUSH PANELS W/ 16GA. STEEL FRAME & (3)4" FULL MORTISE HINGES.	RE-USE EXISTING HARDWARE AND LOCK FROM DOUBLE DOOR	PROPOSED INSTALL DOOR AND FRAME FOR USE IN PROPOSED VIDEO WALL