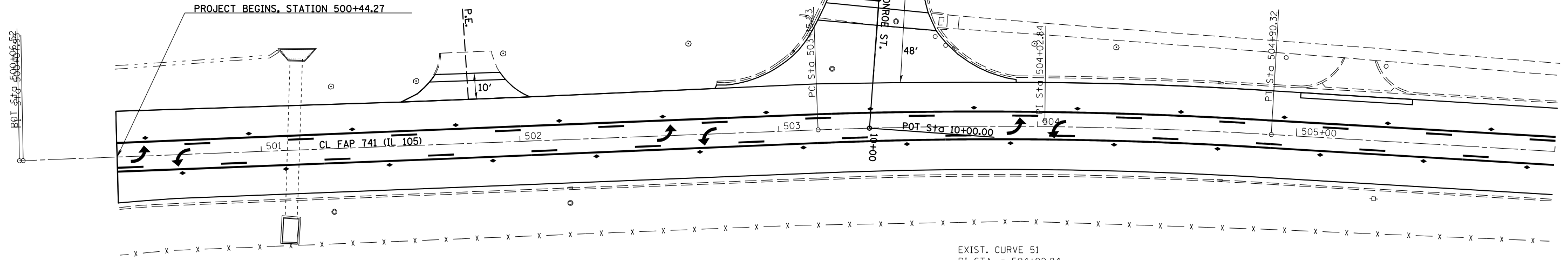


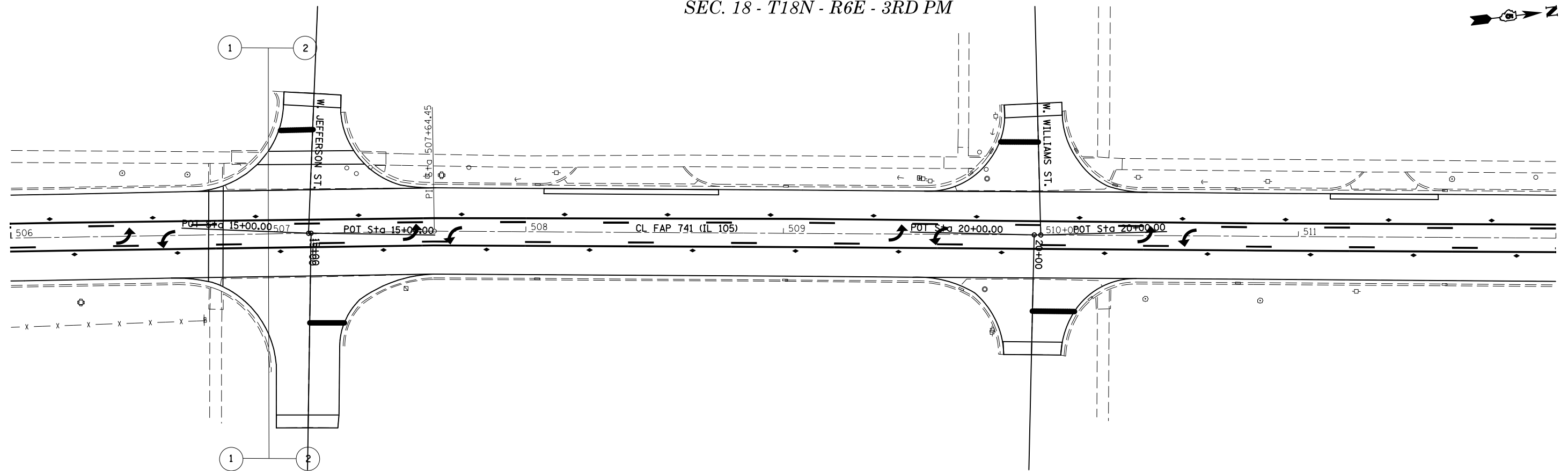
SEC. 18 - T18N - R6E - 3RD PM

NOTE: SOME QUANTITIES FOR WORK OUTSIDE THE PROJECT LIMITS HAVE BEEN INCLUDED IN THE PLANS



EXIST. CURVE 51
 PI STA. = 504+02.84
 $\Delta = 5^\circ 37' 06''$ (RT)
 $D = 3^\circ 12' 31''$
 $R = 1,785.64'$
 $T = 87.62'$
 $L = 175.10'$
 $E = 2.15'$
 $e = \text{-----}$
 $T.R. = \text{-----}$
 $S.E. \text{ RUN} = \text{-----}$
 $P.C. \text{ STA.} = 503+15.23$
 $P.T. \text{ STA.} = 504+90.32$

SEC. 18 - T18N - R6E - 3RD PM



FILE NAME = c:\pwork\work\pwork\cearlock\jd\0388189\03	USER NAME = cearlockjd	DESIGNED -	REVISED -	STATE OF ILLINOIS DEPARTMENT OF TRANSPORTATION	PLAN SHEET		F.A.P. RTE.	SECTION	COUNTY	TOTAL SHEETS	SHEET NO.
	70843-sh1-dblprf_20.dgn	DRAWN -	REVISED -		SCALE:	SHEET NO. 1 OF 15 SHEETS	STA. 500+44.27 TO STA. 510+00	741	(7,Z)RS-3	Platt	63
	PLOT SCALE = 40.0000' / in.	CHECKED -	REVISED -				CONTRACT NO. 70843		ILLINOIS FED. AID PROJECT		
	PLOT DATE = 4/10/2014	DATE -	REVISED -								