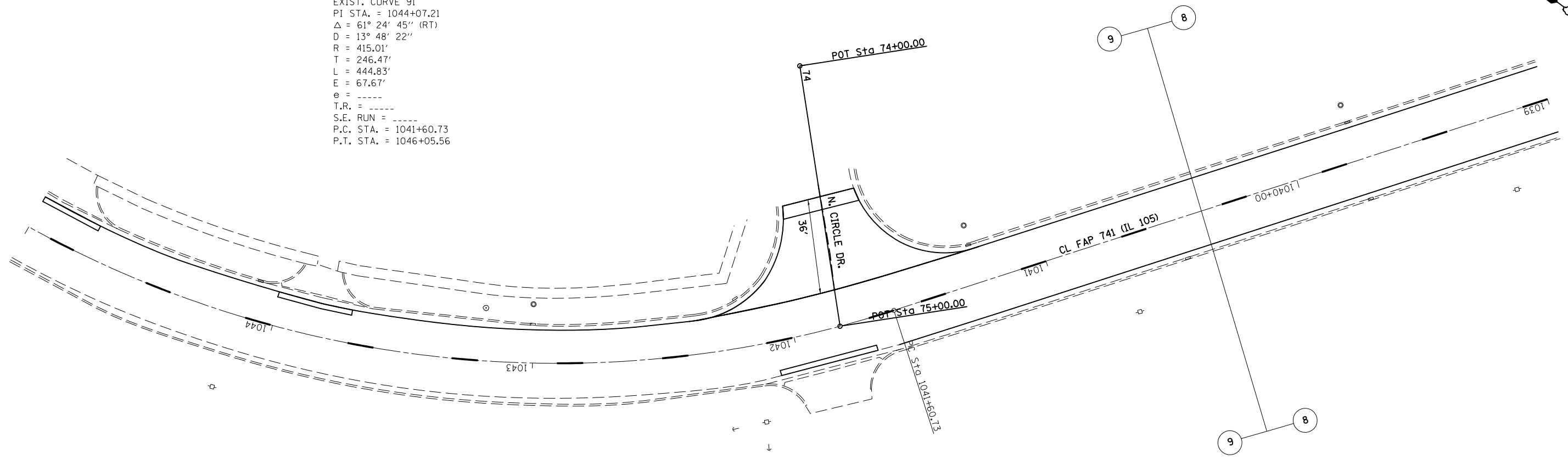


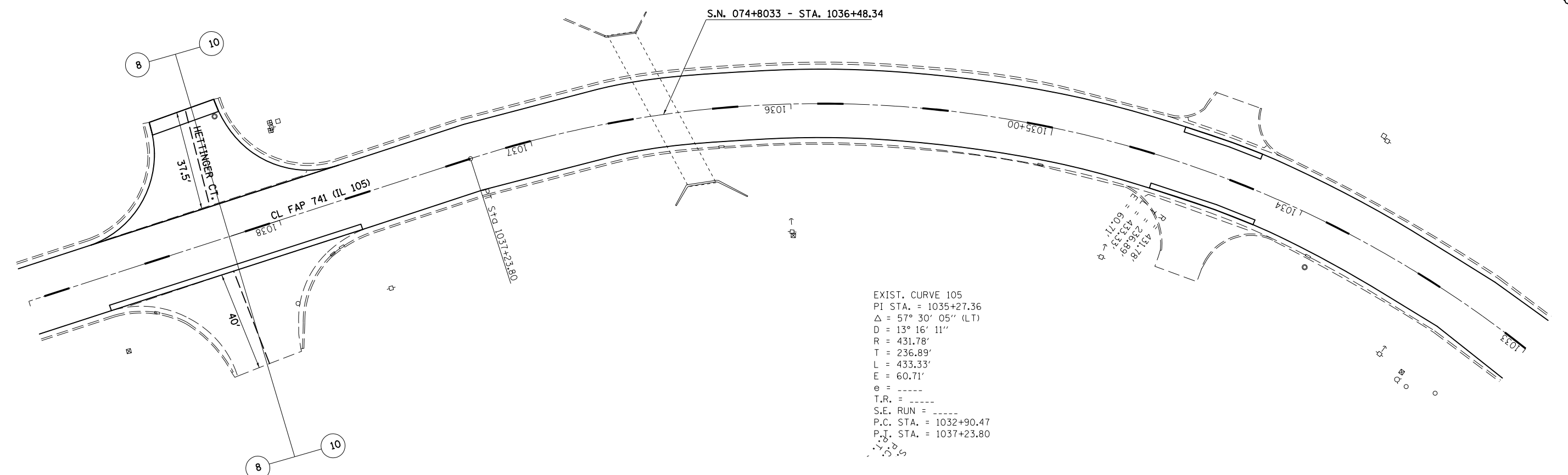
SEC. 7 - T18N - R6E - 3RD PM

EXIST. CURVE 91
 PI STA. = 1044+07.21
 $\Delta = 61^\circ 24' 45''$ (RT)
 D = 13° 48' 22"
 R = 415.01'
 T = 246.47'
 L = 444.83'
 E = 67.67'
 e = -----
 T.R. = -----
 S.E. RUN = -----
 P.C. STA. = 1041+60.73
 P.T. STA. = 1046+05.56



SEC. 7 - T18N - R6E - 3RD PM

EXIST. CURVE 105
 PI STA. = 1035+27.36
 $\Delta = 57^\circ 30' 05''$ (LT)
 D = 13° 16' 11"
 R = 431.78'
 T = 236.89'
 L = 433.33'
 E = 60.71'
 e = -----
 T.R. = -----
 S.E. RUN = -----
 P.C. STA. = 1032+90.47
 P.T. STA. = 1037+23.80



FILE NAME =	USER NAME = ceerlockjd	DESIGNED -	REVISED -
e:\pwork\pwork\ceerlockjd\0388189\0370843-shr-dblprf_20.dgn	70843-shr-dblprf_20.dgn	DRAWN -	REVISED -
PLOT SCALE = 40.0000' / in.		CHECKED -	REVISED -
PLOT DATE = 4/10/2014		DATE -	REVISED -

**STATE OF ILLINOIS
 DEPARTMENT OF TRANSPORTATION**

PLAN SHEET

SCALE: SHEET NO. 6 OF 15 SHEETS STA. 1045+00 TO STA. 1033+00

F.A.P. RTE.	SECTION	COUNTY	TOTAL SHEETS	SHEET NO.
741	(7,Z)RS-3	Platt	63	44
CONTRACT NO. 70843			ILLINOIS FED. AID PROJECT	