

STATE OF ILLINOIS
DEPARTMENT OF TRANSPORTATION
DIVISION OF HIGHWAYS

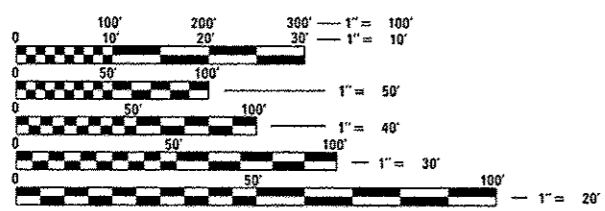
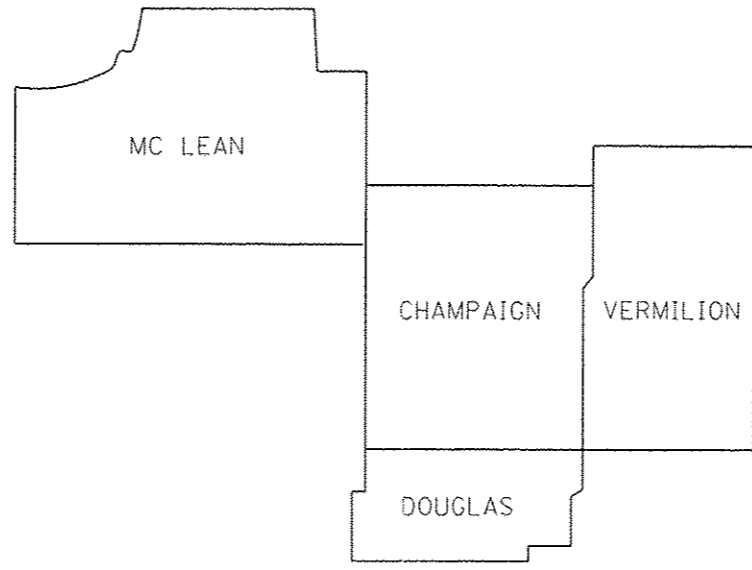
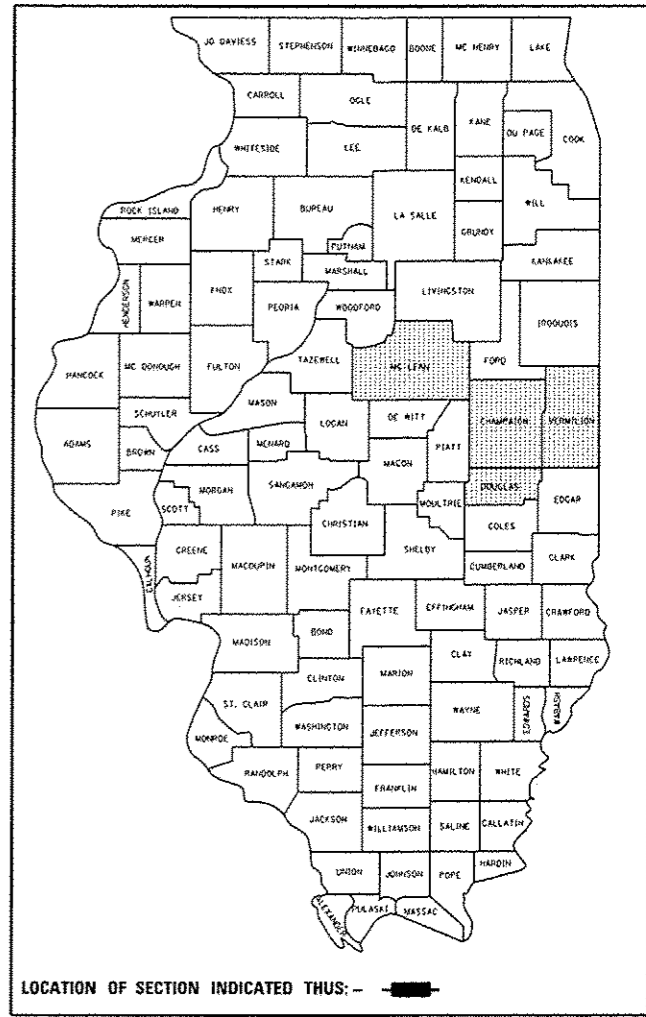
PROPOSED
HIGHWAY PLANS

VARIOUS ROUTES
SECTION D5 CURVE SIGNING 2014-1
VARIOUS COUNTIES
SIGNING (NEW)
PROJECT ACHSIP-0005 (991)
C-95-016-14

FOR INDEX OF SHEETS, SEE SHEET NO. 2
 FOR SUMMARY OF QUANTITIES, SEE SHEET NO. 3
 FOR LOCATION MAPS, SEE SHEETS NO. 4-13

F.A. RY. VAR.	SECTION	COUNTY	TOTAL SHEETS	SHEET NO.
		ILLINOIS	22	1
CONTRACT NO. 70A62				

D-95-016-14



FULL SIZE PLANS HAVE BEEN PREPARED USING STANDARD ENGINEERING SCALES. REDUCED SIZED PLANS WILL NOT CONFORM TO STANDARD SCALES. IN MAKING MEASUREMENTS ON REDUCED PLANS, THE ABOVE SCALES MAY BE USED.

J.U.L.I.E.
 JOINT UTILITY LOCATION INFORMATION FOR EXCAVATION
 1-800-892-0123
 OR 811

PROJECT ENGINEER - JASON STULTS
PHONE NUMBER: (217)465-4181
CONTRACT NO. 70A62

STATE OF ILLINOIS
 DEPARTMENT OF TRANSPORTATION
 DIVISION OF HIGHWAYS

SUBMITTED MARCH 19 2014
Joseph S. Cooney
 DEPUTY DIRECTOR OF HIGHWAYS, REGION ENGINEER *CHS*

May 9 2014
John D. Baranzelli, P.E.
 acting ENGINEER OF DESIGN AND ENVIRONMENT

May 9 2014
Orfer Osman, P.E.
 DIRECTOR OF HIGHWAYS, CHIEF ENGINEER

PRINTED BY THE AUTHORITY
OF THE STATE OF ILLINOIS