

STATE OF ILLINOIS
DEPARTMENT OF TRANSPORTATION
DIVISION OF HIGHWAYS
**PROPOSED
CONTRACT MAINTENANCE**

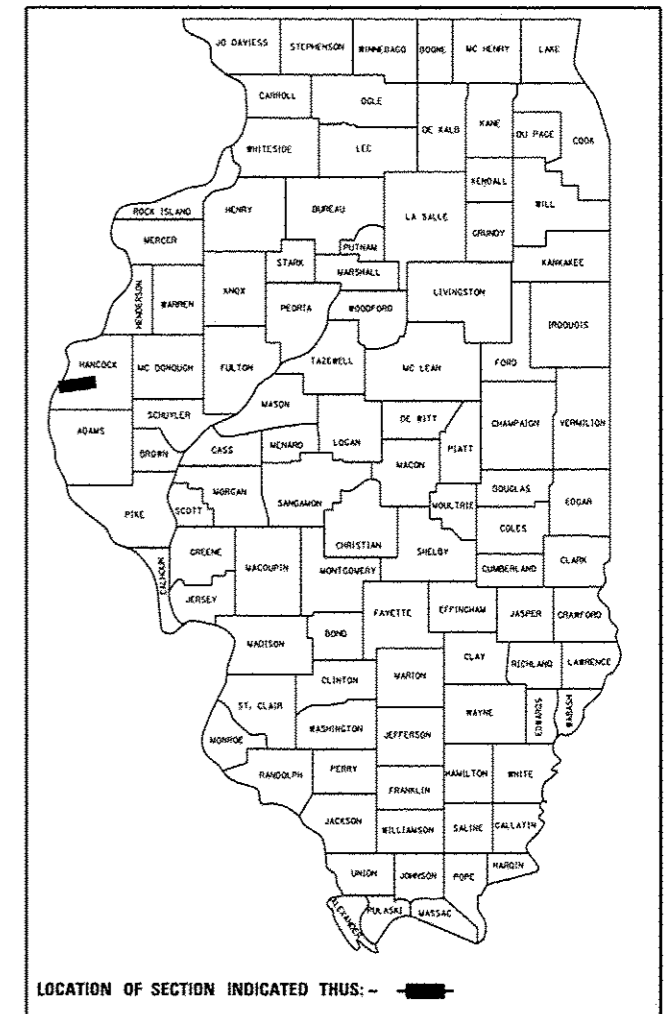
FOR INDEX OF SHEETS, SEE SHEET NO. 2

SBI 96 (MAIN ST/WARSAW RD)
SECTION (123) RS-7

HANCOCK COUNTY

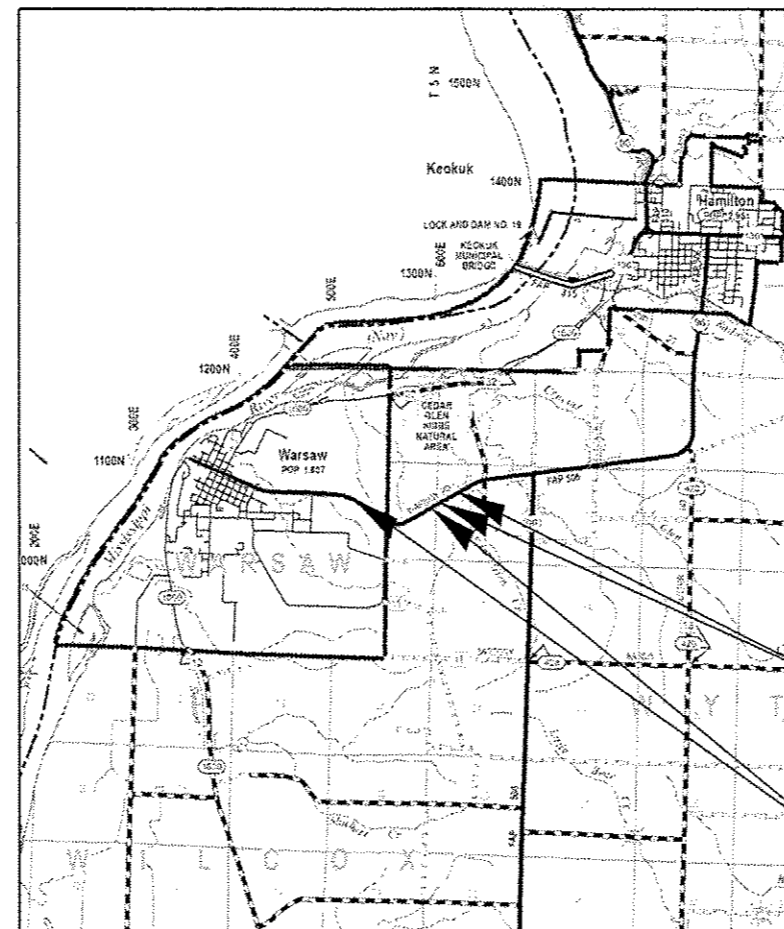
S.B.I. RTE.	SECTION	COUNTY	TOTAL SHEETS	SHEET NO.
96	(123) RS-7	HANCOCK	8	1
FED. ROAD DIST. NO.		ILLINOIS	CONTRACT NO. 72G67	

D-96-037-14



C-96-037-14

R 9 W



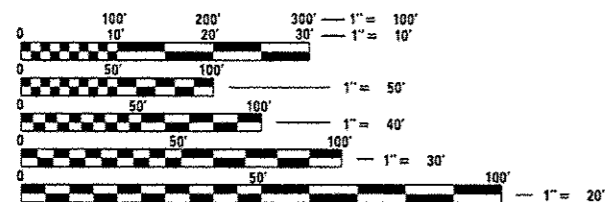
T 4 N

LOCATION #2
STA. 147+50 TO 168+00

LOCATION #1
STA. 88+50 TO 135+00

LOCATION #1 GROSS LENGTH = 4,650.00 FT. = 0.881 MILE
LOCATION #2 GROSS LENGTH = 2,050.00 FT. = 0.388 MILE

ADT = 650
SU = 30
MU = 60



FULL SIZE PLANS HAVE BEEN PREPARED USING STANDARD ENGINEERING SCALES. REDUCED SIZED PLANS WILL NOT CONFORM TO STANDARD SCALES. IN MAKING MEASUREMENTS ON REDUCED PLANS, THE ABOVE SCALES MAY BE USED.

J.U.L.I.E.
JOINT UTILITY LOCATION INFORMATION FOR EXCAVATION
1-800-892-0123
OR 811

PLAN AND CONTRACT TECHNICIAN
TIMOTHY SHARP (217)782-7743

CONTRACT NO. 72G67

STATE OF ILLINOIS
DEPARTMENT OF TRANSPORTATION
DIVISION OF HIGHWAYS

SUBMITTED April 2 20 14
Ray 2 Dalky
DEPUTY DIRECTOR OF HIGHWAYS, REGION ENGINEER

May 9 20 14
John D. Baranzelli, P.E.
ENGINEER OF DESIGN AND ENVIRONMENT

May 9 20 14
Orker Osman, P.E.
DIRECTOR OF HIGHWAYS, CHIEF ENGINEER

**PRINTED BY THE AUTHORITY
OF THE STATE OF ILLINOIS**