

STATE OF ILLINOIS
DEPARTMENT OF TRANSPORTATION
DIVISION OF HIGHWAYS

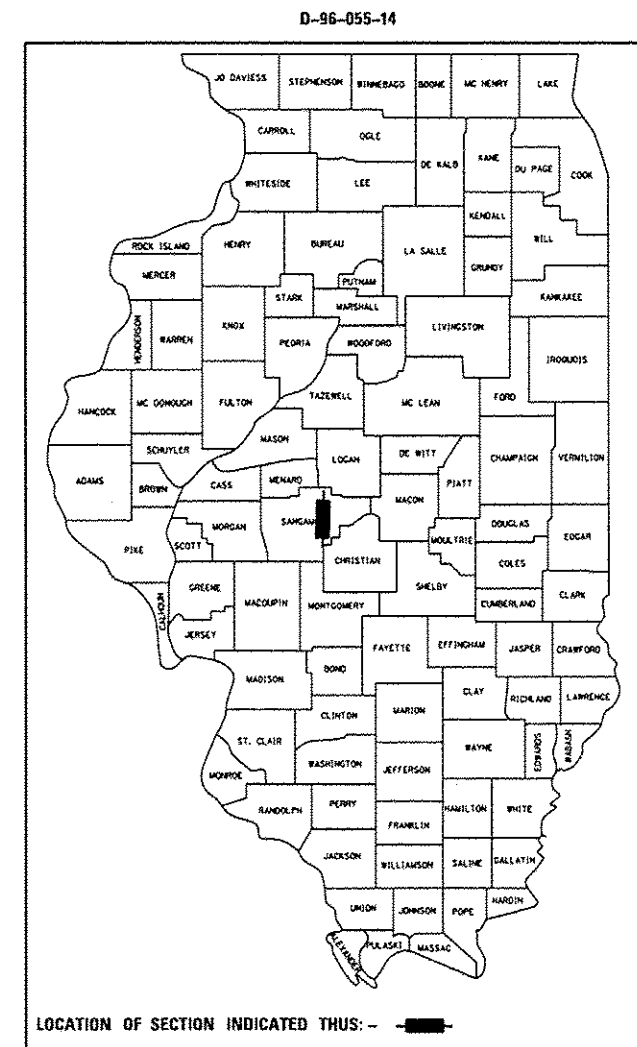
PROPOSED SPRING ROAD REPAIR

FOR INDEX OF SHEETS, SEE SHEET NO. 2

FAI ROUTE 55 (I-55)
SECTION (84-2-2) I-4
PROJECT SPR-2014
BRIDGE DECK PATCHING
SANGAMON COUNTY

C-96-055-14

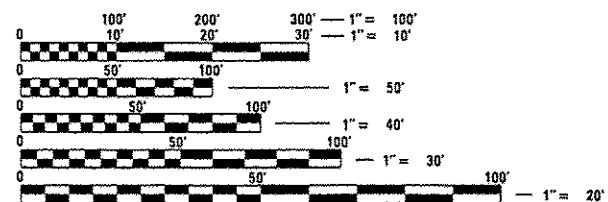
F.A.I. RTE.	SECTION	COUNTY	TOTAL SHEETS	SHEET NO.
55	(84-2-2) I-4	SANGAMON	28	1
		ILLINOIS	CONTRACT NO. 72G84	



F.A.I. 55 (I-55)
ADT (2013) : 29700
HCV = 25.42% SU = 3.2% MU = 22.22%
SPEED LIMIT: 65 MPH (POSTED)

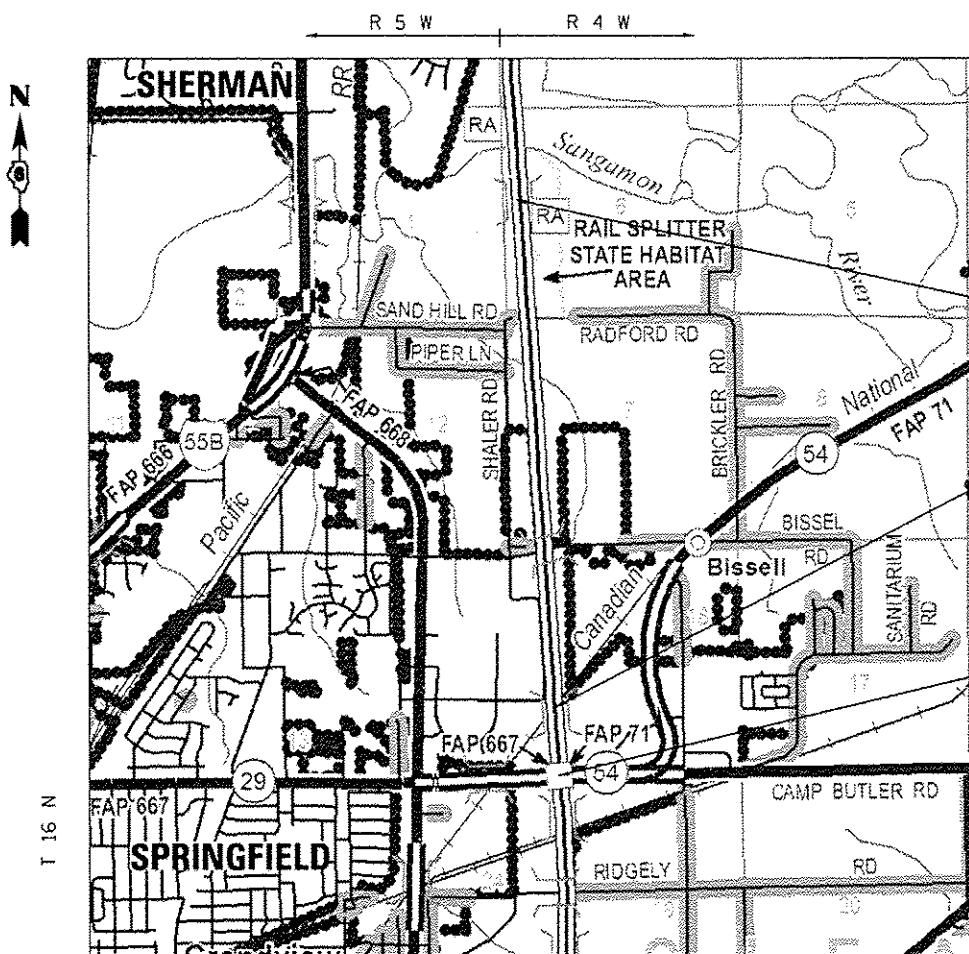
GROSS LENGTH

- SN 084-0019
STA. 456+62.50 TO STA. 467+87.50 = 1,125.00 FT
- SN 084-0017
STA. 592+10.80 TO STA. 594+55.30 = 244.50 FT
- SN 084-0016
STA. 592+81.50 TO STA. 595+26.00 = 244.50 FT
- SN 084-0015
STA. 607+99.68 TO STA. 610+40.18 = 240.50 FT
- SN 084-0014
STA. 607+98.10 TO STA. 610+38.60 = 240.50 FT



FULL SIZE PLANS HAVE BEEN PREPARED USING STANDARD ENGINEERING SCALES. REDUCED SIZED PLANS WILL NOT CONFORM TO STANDARD SCALES. IN MAKING MEASUREMENTS ON REDUCED PLANS, THE ABOVE SCALES MAY BE USED.

J.U.L.I.E.
JOINT UTILITY LOCATION INFORMATION FOR EXCAVATION
1-800-892-0123
OR 811



PROJECT LOCATION 1:
SN 084-0019 (SB)
STA. 462+25.00

PROJECT LOCATION 2:
SN 084-0016 (SB)
STA 594+03.75
SN 084-0017 (NB)
STA. 593+33.05

PROJECT LOCATION 3:
SN 084-0014 (SB)
STA 609+19.93
SN 084-0015 (NB)
STA. 609+18.35

BRIDGE MAINTENANCE ENGINEER (ACTING): BRANDON DUDLEY (217) 785-9290
BRIDGE INSPECTION ENGINEER: DAVE COPENBARGER (217) 785-5306

CONTRACT NO. 72G84

NET LENGTH = 2,095 FT = 0.397 MILE

STATE OF ILLINOIS
DEPARTMENT OF TRANSPORTATION
DIVISION OF HIGHWAYS

SUBMITTED April 10 20 14

Rosa Z. Druehl
DEPUTY DIRECTOR OF HIGHWAYS, REGION ENGINEER

May 9 20 14
John D. Caranzelli, P.E.
ENGINEER OF DESIGN AND ENVIRONMENT

May 9 20 14
Chris Conner, P.E.
DIRECTOR OF HIGHWAYS, CHIEF ENGINEER

**PRINTED BY THE AUTHORITY
OF THE STATE OF ILLINOIS**