

STATE OF ILLINOIS
DEPARTMENT OF TRANSPORTATION
DIVISION OF HIGHWAYS

F.A.P. RTE.	SECTION	COUNTY	TOTAL SHEETS	SHEET NO.
315	(123) I-1	MASON	64	1
		ILLINOIS	CONTRACT NO. 72G93	

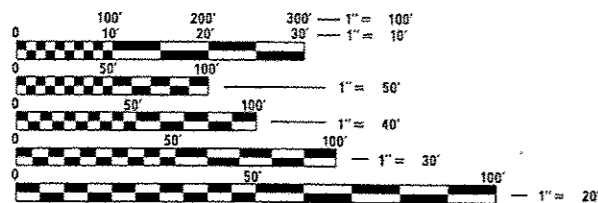
INDEX OF SHEETS

- 1 COVER SHEET
- 2 GENERAL NOTES
- 3-5 SUMMARY OF QUANTITIES
- 6-11 SCHEDULE OF QUANTITIES
- 12-14 BENCH MARKS, SURVEY MARKERS, X-TIES
- 15 TYPICAL CROSS SECTIONS
- 16-28 PLAN SHEETS
- 29-31 EARTHWORK PLAN AND PROFILE
- 32-35 STORM WATER POLLUTION PREVENTION PLAN
- 36, 37 PLAN DETAILS
- 38-64 CROSS SECTIONS

STANDARDS

000001-06	701001-02
001006	701006-05
280001-07	701011-04
406201-01	701301-04
630101-09	701306-03
630301-06	701311-03
631011-09	701326-04
635006-03	701901-03
635011-02	780001-04

HIGHWAY CLASSIFICATION
FUNCTIONAL CLASS
US 136 - OTHER PRINCIPAL ARTERIAL
ADT - 1,600 (2013)
PV = 70.8%
SU = 5.0%
MU = 24.21%



FULL SIZE PLANS HAVE BEEN PREPARED USING STANDARD ENGINEERING SCALES. REDUCED SIZED PLANS WILL NOT CONFORM TO STANDARD SCALES. IN MAKING MEASUREMENTS ON REDUCED PLANS, THE ABOVE SCALES MAY BE USED.

J.U.L.I.E.
JOINT UTILITY LOCATION INFORMATION FOR EXCAVATION
1-800-892-0123
OR 811

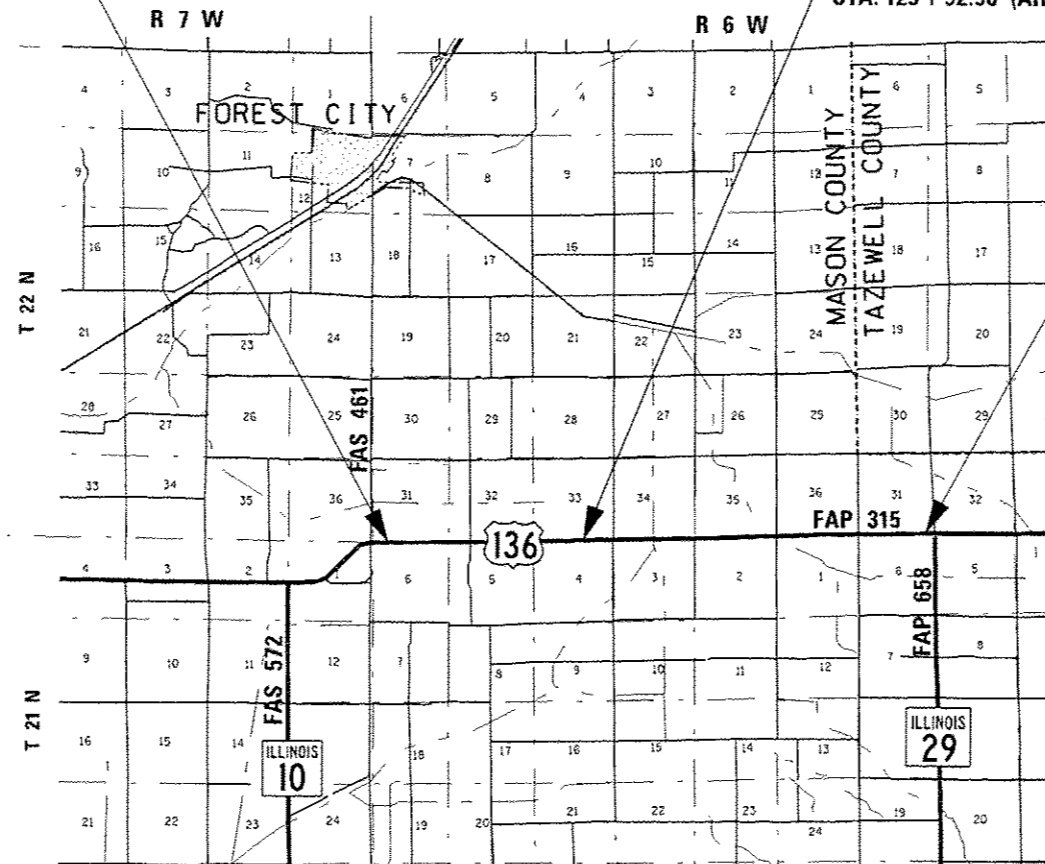
PROJECT ENGINEER: VINCE MADONIA (217) 785-9046
PROJECT MANAGER: TIM SLAGLE (217) 785-5338
CONTRACT NO. 72G93

PROPOSED
HIGHWAY PLANS

FAP 315 (US 136)
SECTION (123) I-1
PROJECT # ACHSIP-0315 (066)
HMA SHOULDER, GUARDRAIL CONSTRUCTION
MASON COUNTY
C-96-064-14

BEGIN PROJECT LIMITS
STA 641+85.86

STATION EQUATION:
STA. 696 + 79.39 (BK) =
STA. 125 + 92.90 (AH)

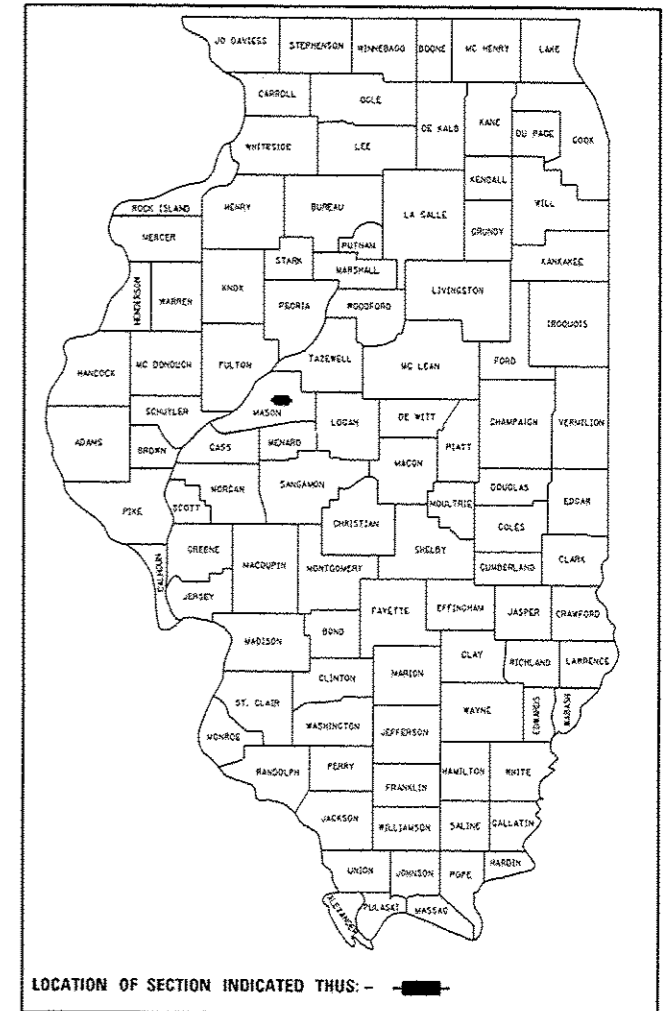


END PROJECT LIMITS
STA 426+00.00

LOCATION MAP

GROSS LENGTH = 35,500.63 FEET = 6.72 MILES
NET LENGTH = 34,812.11 FEET = 6.59 MILES

D-96-064-14



LOCATION OF SECTION INDICATED THUS: —

STATE OF ILLINOIS
DEPARTMENT OF TRANSPORTATION
DIVISION OF HIGHWAYS

SUBMITTED April 18 20 14
Reg. 2014
DEPUTY DIRECTOR OF HIGHWAYS, REGION ENGINEER

May 9 20 14
John D. Baranzoni, PE
ENGINEER OF DESIGN AND ENVIRONMENT

May 9 20 14
Osman, PE
DIRECTOR OF HIGHWAYS, CHIEF ENGINEER

PRINTED BY THE AUTHORITY
OF THE STATE OF ILLINOIS