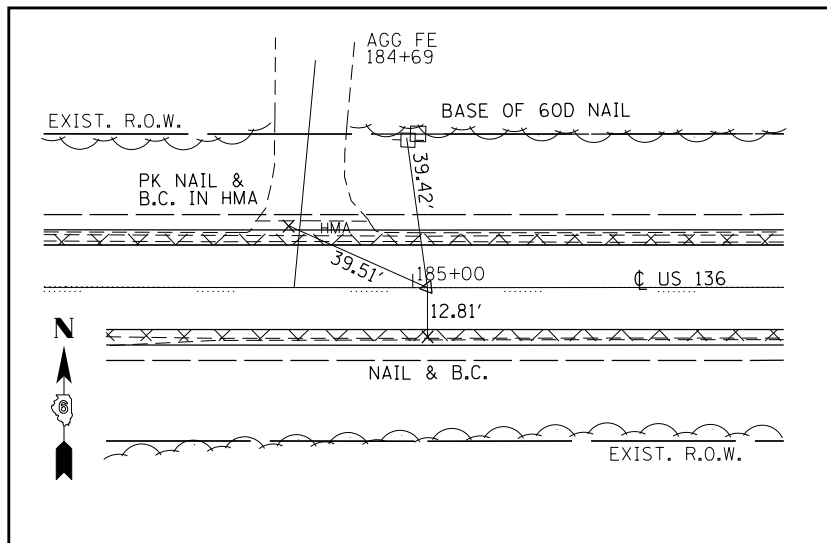
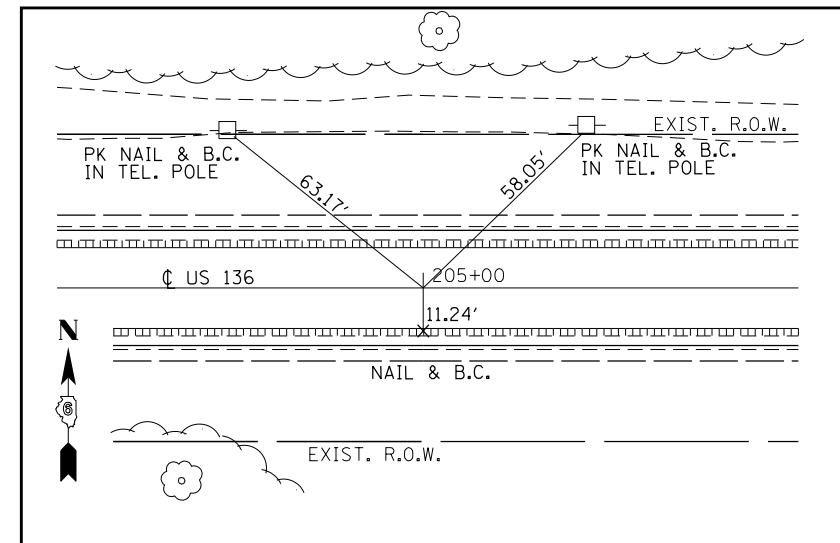


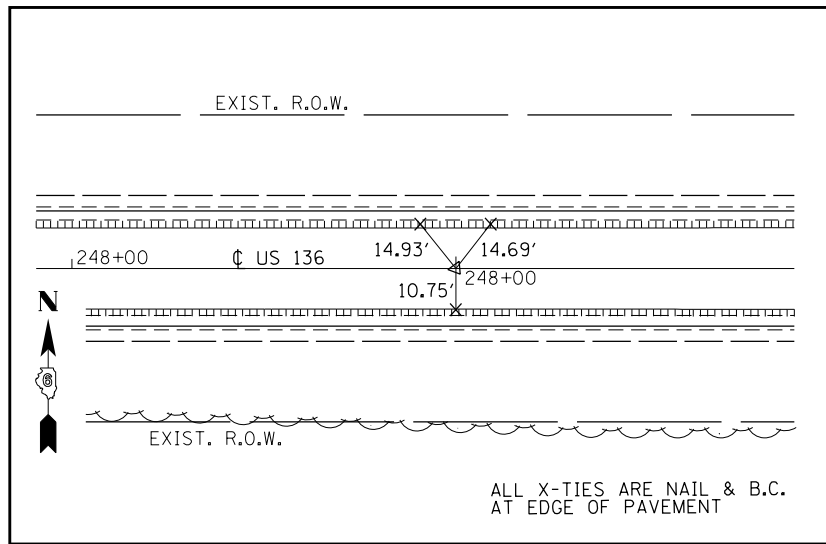
P.O.T. STA. 180+00.00
P.K. NAIL WITH CHISELED 'X'



P.O.T. STA. 185+03.80
P.K. NAIL WITH CHISELED 'X'

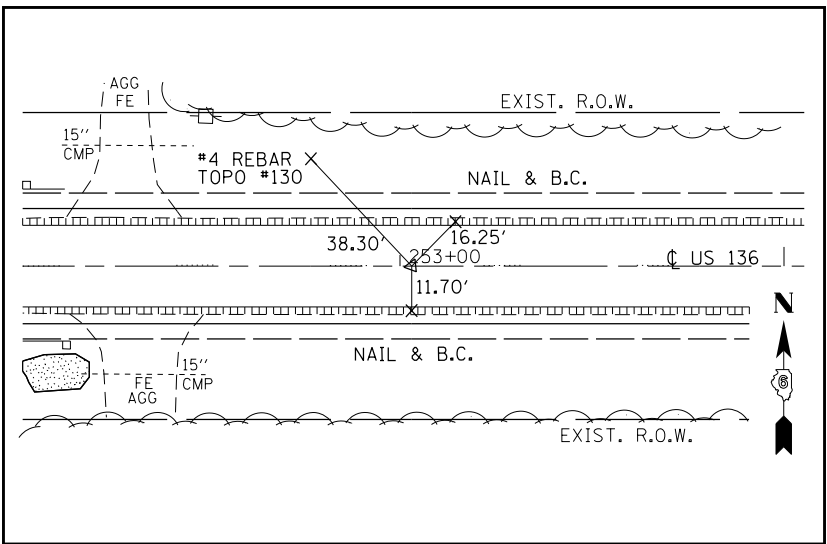


P.O.T. STA. 205+00.00
P.K. NAIL WITH CHISELED 'X'

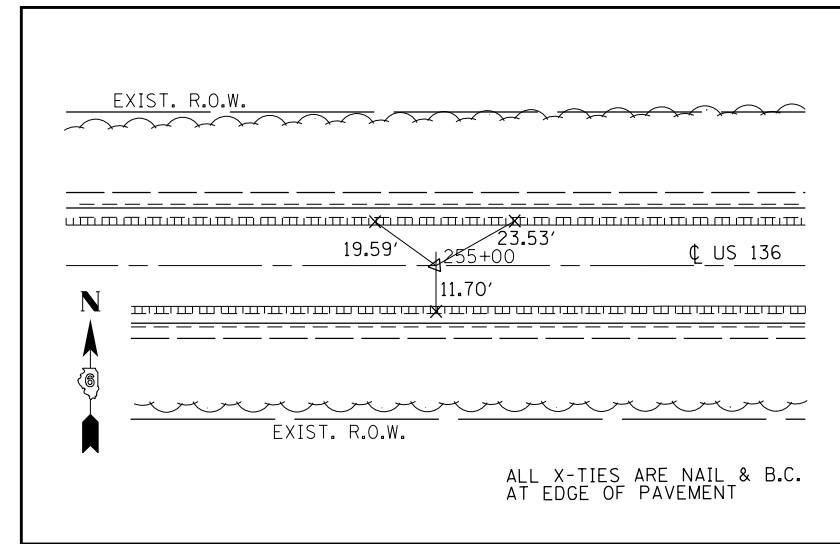


P.O.T. STA. 248+00.00
P.K. NAIL WITH CHISELED 'X'

ALL X-TIES ARE NAIL & B.C.
AT EDGE OF PAVEMENT



P.O.T. STA. 253+03.02
P.K. NAIL WITH CHISELED 'X'



P.O.T. STA. 255+00.00
P.K. NAIL WITH CHISELED 'X'

ALL X-TIES ARE NAIL & B.C.
AT EDGE OF PAVEMENT

FILE NAME =	USER NAME = sparksgw	DESIGNED - RTS	REVISED -
ct:\pw\work\p\dot\sparksgw\10219881\0672093-sht-ATB.dgn		DRAWN - RTS	REVISED -
	PLOT SCALE = 100.0000' / 1"	CHECKED -	REVISED -
	PLOT DATE = Apr-18-2014 02:00:33PM	DATE - 04-02-14	REVISED -

STATE OF ILLINOIS
DEPARTMENT OF TRANSPORTATION

CROSS TIES

SCALE: SHEET 1 OF 2 SHEETS STA. TO STA.

F.A.P. RTE.	SECTION	COUNTY	TOTAL SHEETS	SHEET NO.
315	(123) I-1	MASON	64	13
CONTRACT NO. 72G93				
ILLINOIS FED. AID PROJECT				