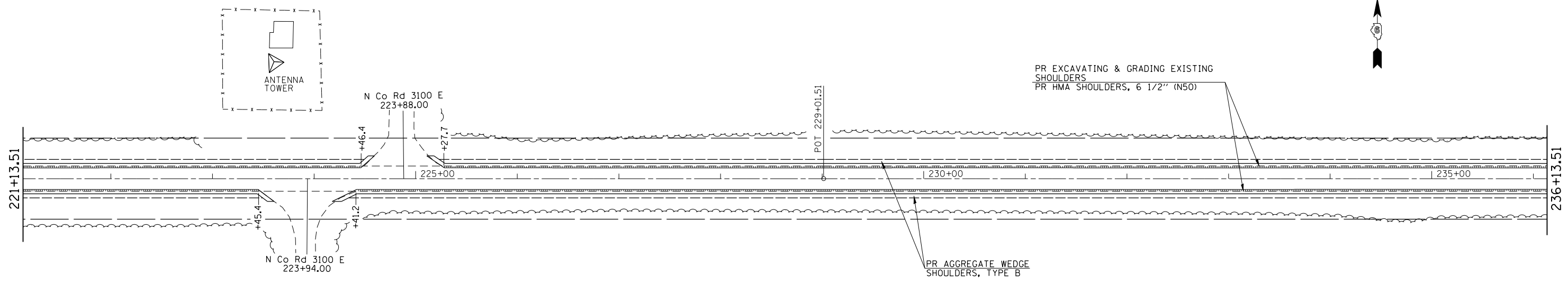


NOTES:
 REFER TO THE HMA MIXTURE TABLES FOUND IN THE GENERAL NOTES, SHEET 2 FOR THE CONSTRUCTION MAKEUP OF PROPOSED HMA SHOULDERS, 6 1/2". THE PROPOSED E.O.P. STRIPING IS NOT SHOWN ON THIS PLAN SHEET, SEE THE SCHEDULES AND TYPICALS FOR MARKING LOCATIONS. THE WIDTHS OF PROPOSED HMA SHOULDERS ARE:
 3' AT STA. 641+85.86 TO STA. 685+95.81, LT. & RT.
 4' AT STA. 685+95.81 TO STA. 426+00.00, LT. & RT.
 THE WIDTHS OF PROPOSED AGGREGATE WEDGE SHOULDERS, TYPE B ARE 4'.

----- = PROPOSED REMOVAL OF EXISTING HMA SHOULDERS IS INCLUDED IN THE COSTS FOR "EXCAVATING AND GRADING EXISTING SHOULDERS".
 HMA SHOULDER REMOVAL WIDTH = 1'-6"
 HMA SHOULDER REMOVAL DEPTH = 6 1/2" (SEE TYPICAL CROSS SECTIONS AND SCHEDULES FOR SPECIFIED LOCATIONS.)



FILE NAME =	USER NAME = sparksgw	DESIGNED - RTS	REVISED -
c:\pw\work\pwidot\sparksgw\0219881\0672093-sht-plans.dgn		DRAWN - RTS	REVISED -
Default	PLOT SCALE = 100.0000' / in.	CHECKED -	REVISED -
	PLOT DATE = Apr-30-2014 03:50:30PM	DATE - 3-24-2014	REVISED -

**STATE OF ILLINOIS
 DEPARTMENT OF TRANSPORTATION**

PLAN SHEETS			
SCALE:	SHEET 6 OF 13 SHEETS	STA.	TO STA.

F.A.P. RTE.	SECTION	COUNTY	TOTAL SHEETS	SHEET NO.
315	(123) I-1	MASON	64	21
CONTRACT NO. 72G93				
ILLINOIS FED. AID PROJECT				