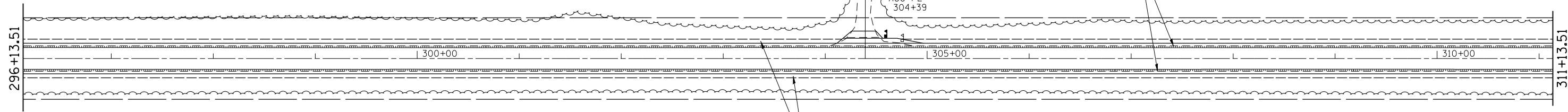




PR EXCAVATING & GRADING EXISTING SHOULDERS
PR HMA SHOULDERS, 6 1/2" (N50)

AGG PE
304+39



PR AGGREGATE WEDGE SHOULDERS, TYPE B

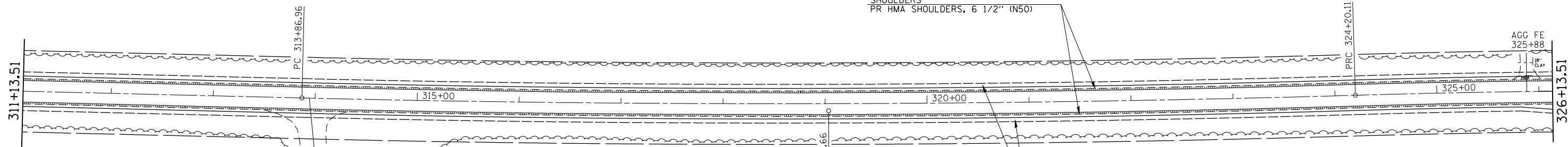
NOTES:
REFER TO THE HMA MIXTURE TABLES FOUND IN THE GENERAL NOTES, SHEET 2 FOR THE CONSTRUCTION MAKEUP OF PROPOSED HMA SHOULDERS, 6 1/2". THE PROPOSED E.O.P. STRIPING IS NOT SHOWN ON THIS PLAN SHEET, SEE THE SCHEDULES AND TYPICALS FOR MARKING LOCATIONS.
THE WIDTHS OF PROPOSED HMA SHOULDERS ARE:
3' AT STA. 641+85.86 TO STA. 685+95.81, LT. & RT.
4' AT STA. 685+95.81 TO STA. 426+00.00, LT. & RT.
THE WIDTHS OF PROPOSED AGGREGATE WEDGE SHOULDERS, TYPE B ARE 4'.

----- = PROPOSED REMOVAL OF EXISTING HMA SHOULDERS IS INCLUDED IN THE COSTS FOR "EXCAVATING AND GRADING EXISTING SHOULDERS".
HMA SHOULDER REMOVAL WIDTH = 1'-6"
HMA SHOULDER REMOVAL DEPTH = 6 1/2" (SEE TYPICAL CROSS SECTIONS AND SCHEDULES FOR SPECIFIED LOCATIONS.)



PR EXCAVATING & GRADING EXISTING SHOULDERS
PR HMA SHOULDERS, 6 1/2" (N50)

AGG FE
325+88



PR AGGREGATE WEDGE SHOULDERS, TYPE B

EXIST. CURVE 1162
PI STA. = 319+03.66
 $\Delta = 3^\circ 04' 12''$ (LT)
D = $0^\circ 17' 50''$
R = 19,281.40'
T = 516.70'
L = 1,033.15'
E = 6.92'
e = -----
T.R. = -----
S.E. RUN = -----
P.C. STA. = 313+86.96
P.T. STA. = 324+20.11

SILO

FILE NAME =	USER NAME = sparksgw	DESIGNED - RTS	REVISED -
Default	c:\pw\work\pwidot\sparksgw\0219881\0672093-sht-plans.dgn	DRAWN - RTS	REVISED -
	PLOT SCALE = 100.0000' / in.	CHECKED -	REVISED -
	PLOT DATE = Apr-30-2014 03:51:42PM	DATE - 3-24-2014	REVISED -

**STATE OF ILLINOIS
DEPARTMENT OF TRANSPORTATION**

PLAN SHEETS

SCALE: SHEET 9 OF 13 SHEETS STA. TO STA.

F.A.P. RTE.	SECTION	COUNTY	TOTAL SHEETS	SHEET NO.
315	(123) I-1	MASON	64	24
CONTRACT NO. 72G93				
ILLINOIS FED. AID PROJECT				