

F.A.P. RTE.	SECTION	COUNTY	TOTAL SHEETS	SHEET NO.
**			12	1
ILLINOIS CONTRACT NO. 72H01				
* D6 SPRING RD REPAIR 2014-1				
* ADAMS/BROWN				

STATE OF ILLINOIS
DEPARTMENT OF TRANSPORTATION
DIVISION OF HIGHWAYS

PROPOSED CONTRACT MAINTENANCE PLANS

FAP 745 & FAP 550 (IL 104 & IL 99)
D6 SPRING ROAD REPAIR 2014-1
PROJECT
3P RESURFACING
ADAMS/BROWN COUNTY

C-96-072-14

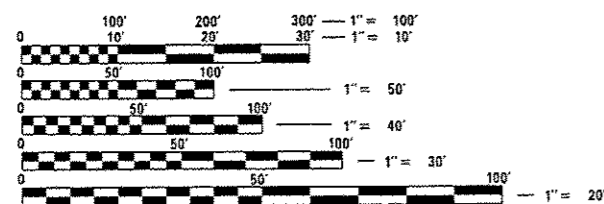
INDEX OF SHEETS

- 1 COVER SHEET
- 2 GENERAL NOTES
- 3-5 SUMMARY OF QUANTITIES
- 6-8 SCHEDULE OF QUANTITIES
- 9 TYPICAL SECTIONS
- 10 PLAN SHEET
- 11-12 DETAILS

STANDARDS

442201-03	701006-05
601001-04	701011-04
601101-01	701201-04
606101-04	701306-03
630001-10	701326-04
630301-06	701901-03
701001-02	780001-04
	781001-03

NOTE:
WHEREVER IN THESE PLANS REFERENCE IS MADE TO D6 SPRING ROAD REPAIR 2014-1, IT SHALL MEAN D6 SPRING RD REPAIR / CM 2014.

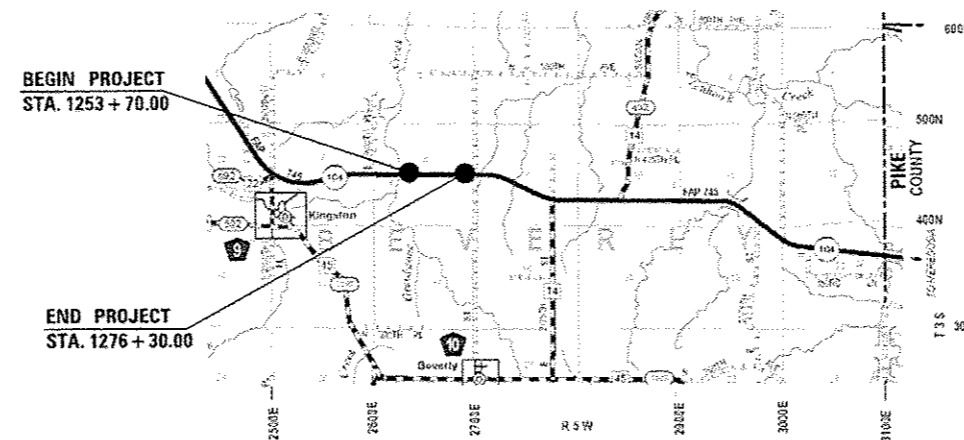


FULL SIZE PLANS HAVE BEEN PREPARED USING STANDARD ENGINEERING SCALES. REDUCED SIZED PLANS WILL NOT CONFORM TO STANDARD SCALES. IN MAKING MEASUREMENTS ON REDUCED PLANS, THE ABOVE SCALES MAY BE USED.

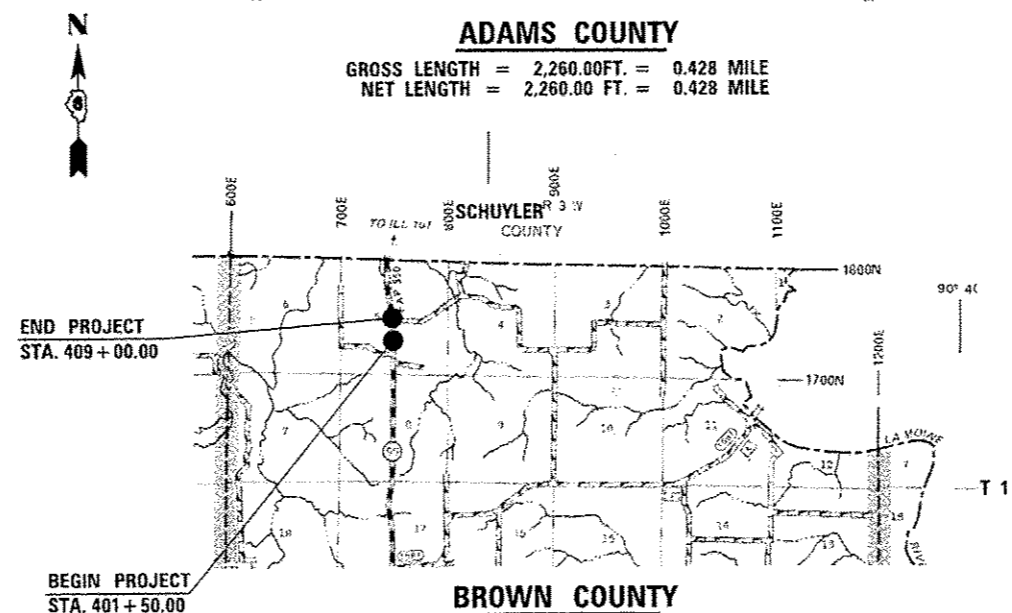
J.U.L.I.E.
JOINT UTILITY LOCATION INFORMATION FOR EXCAVATION
1-800-892-0123
OR 811

SENIOR TEAM ENGINEER: MARK DUST (217) 785-0597
TEAM MANAGER: JARED MARTIN (217) 524-0064

CONTRACT NO. 72H01



ADAMS COUNTY
GROSS LENGTH = 2,260.00 FT. = 0.428 MILE
NET LENGTH = 2,260.00 FT. = 0.428 MILE



BROWN COUNTY
GROSS LENGTH = 750.00 FT. = 0.142 MILE
NET LENGTH = 750.00 FT. = 0.142 MILE

D-96-072-14



LOCATION OF SECTION INDICATED THUS: -

TRAFFIC COUNT

IL-104 / ADAMS COUNTY	IL-99 / BROWN COUNTY
ADT = 625 (2013)	ADT = 400 (2013)
PV = 525 (84.0%)	PV = 80 (20.0%)
SU = 50 (8.0%)	SU = 20 (5.0%)
MU = 50 (8.0%)	MU = 300 (75.0%)

STATE OF ILLINOIS
DEPARTMENT OF TRANSPORTATION
DIVISION OF HIGHWAYS

SUBMITTED April 18 2014
R. J. Smith
DEPUTY DIRECTOR OF HIGHWAYS, REGION ENGINEER

May 9 2014
John D. Baranelli, PE, PE
ENGINEER OF DESIGN AND ENVIRONMENT

May 9 2014
Omur Osman, PE, PE
DIRECTOR OF HIGHWAYS, CHIEF ENGINEER

PRINTED BY THE AUTHORITY
OF THE STATE OF ILLINOIS