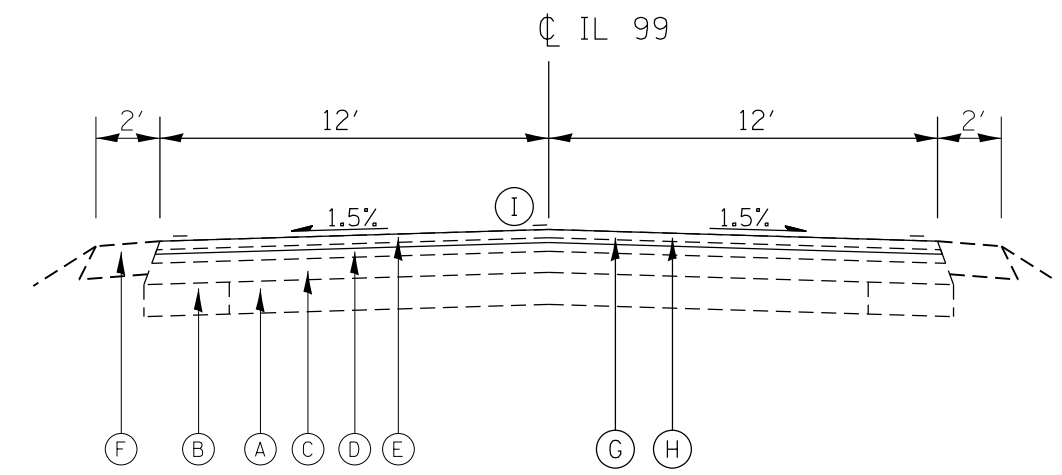
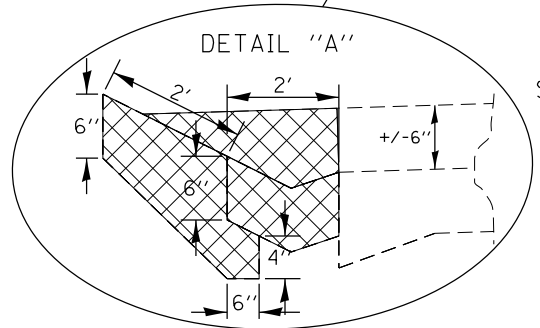


- LEGEND**
- ① EX PCC PAVEMENT (9 - 6 - 9)
 - ② EX HMA OVERLAY, 6" & VARIES
 - ③ EX CONCRETE GUTTER TYPE B
 - ④ EX CONCRETE GUTTER SPECIAL
 - ⑤ PR HMA SURFACE REMOVAL, 2 1/4"
 - ⑥ PR HMA LEVEL BINDER N50, 3/4"
 - ⑦ PR HMA SURFACE MIX "C" N50, 1 1/2"
 - ⑧ PR GUTTER REMOVAL
 - ⑨ PR SUB-BASE GRANULAR MATERIAL, TY B 6"
 - ⑩ PR PCC BASE COURSE WIDENING, 10"
 - ⑪ PR CONCRETE GUTTER, TY A
 - ⑫ PR PIPE UNDERDRAIN, 4"
 - ⑬ PR PAVEMENT MARKING, 5"
 - ⑭ STRIP REFLECTIVE CRACK CONTROL

TYPICAL SECTION - IL 104
STA 1253+70.00 TO STA 1276+30.00

* CA-16 SHALL BE INCLUDED IN THE COST OF THE 4" UNDERDRAIN

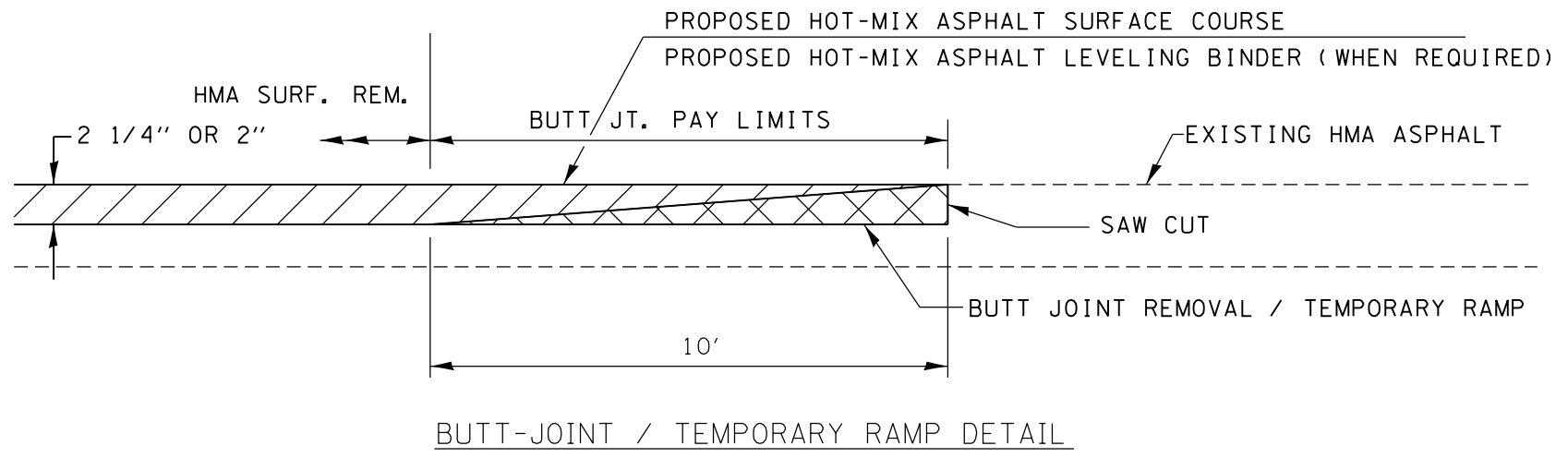
NOTE:
SEE SCHEDULE FOR GUTTER REMOVAL/REPLACEMENT AND UNDERDRAIN STATION RANGES



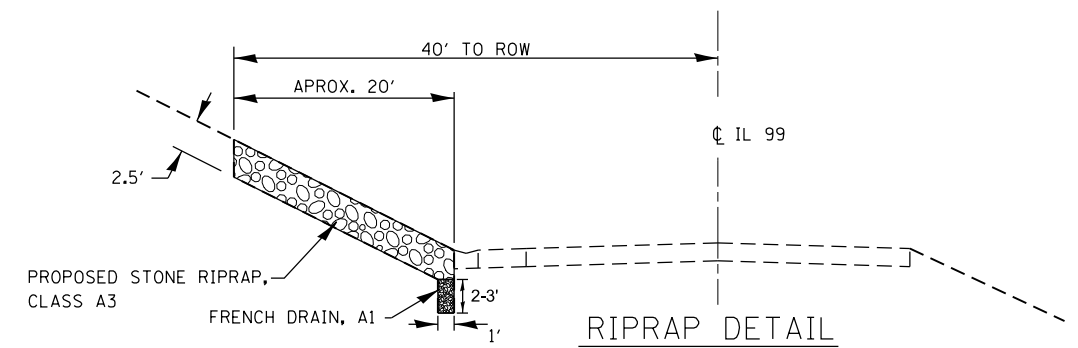
TYPICAL SECTION - IL 99
STA 401+50 TO STA 409+00

LEGEND

- Ⓐ EX AGGREGATE BASE COURSE & SURFACE TREATMENT, 6"
- Ⓑ EX HMA BASE COURSE WIDENING
- Ⓒ EX HMA BINDER COURSE, 4"
- Ⓓ EX HMA BINDER COURSE, 2 1/2"
- Ⓔ EX HMA SURFACE COURSE, 1 1/2"
- Ⓕ EX AGGREGATE SHOULDER, 6"
- Ⓖ PR HMA SURFACE REMOVAL, 2"
- Ⓗ PR HMA SURFACE MIX "C" N50, 2"
- Ⓘ PR PAVEMENT MARKING, 5"



BUTT-JOINT / TEMPORARY RAMP DETAIL



RIPRAP DETAIL

FILE NAME =	USER NAME = sparksgw	DESIGNED -	REVISED -
ct:\pw\work\p\idot\sparksgw\100387531\0672\1001-sht-typical.dgn		DRAWN -	REVISED -
Default	PLOT SCALE = 40.0000' / in.	CHECKED -	REVISED -
	PLOT DATE = Apr-18-2014 10:35:04AM	DATE -	REVISED -

STATE OF ILLINOIS
DEPARTMENT OF TRANSPORTATION

TYPICAL SECTIONS / DETAILS
FAP 550/745 (IL 99/104)

SCALE:	SHEET	OF	SHEETS	STA.	TO	STA.
--------	-------	----	--------	------	----	------

F.A.P. RTE.	SECTION	COUNTY	TOTAL SHEETS	SHEET NO.
			12	9
CONTRACT NO. 72H01			ILLINOIS FED. AID PROJECT	