

STATE OF ILLINOIS
DEPARTMENT OF TRANSPORTATION
DIVISION OF HIGHWAYS

**PROPOSED
CONTRACT MAINTENANCE PLANS**

FAP 745 & FAP 550 (IL 104 & IL 99)
D6 SPRING ROAD REPAIR 2014-1
PROJECT
3P RESURFACING
ADAMS/BROWN COUNTY

C-96-072-14

F.A.P. RTE.	SECTION	COUNTY	TOTAL SHEETS	SHEET NO.
**		ILLINOIS	12	1
CONTRACT NO. 72H01				

* D6 SPRING RD REPAIR 2014-1
* ADAMS/BROWN



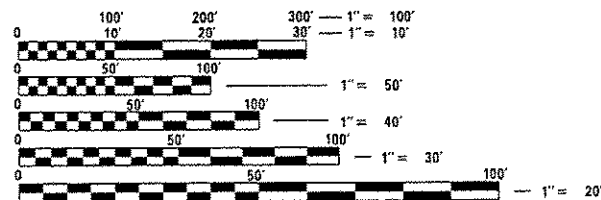
INDEX OF SHEETS

- 1 COVER SHEET
- 2 GENERAL NOTES
- 3-5 SUMMARY OF QUANTITIES
- 6-8 SCHEDULE OF QUANTITIES
- 9 TYPICAL SECTIONS
- 10 PLAN SHEET
- 11-12 DETAILS

STANDARDS

442201-03	701006-05
601001-04	701011-04
601101-01	701201-04
606101-04	701306-03
630001-10	701326-04
630301-06	701901-03
701001-02	780001-04
	781001-03

NOTE:
WHEREVER IN THESE PLANS REFERENCE IS MADE TO D6 SPRING ROAD REPAIR 2014-1, IT SHALL MEAN D6 SPRING RD REPAIR / CM 2014.

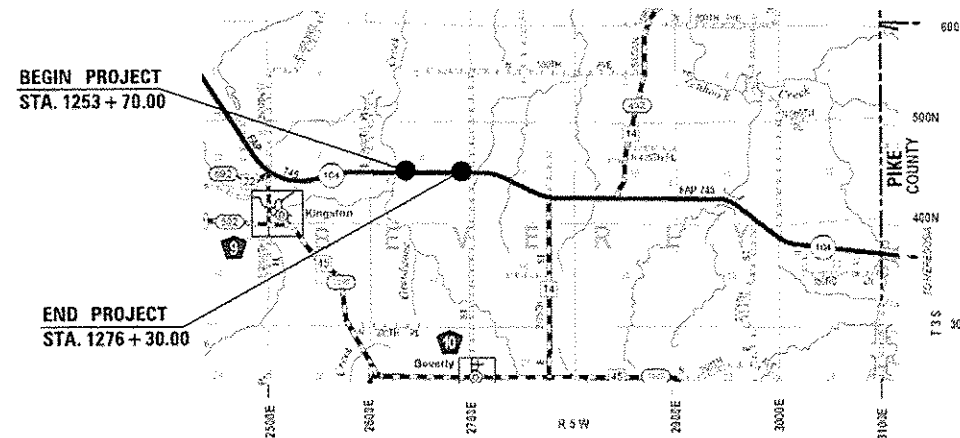


FULL SIZE PLANS HAVE BEEN PREPARED USING STANDARD ENGINEERING SCALES. REDUCED SIZED PLANS WILL NOT CONFORM TO STANDARD SCALES. IN MAKING MEASUREMENTS ON REDUCED PLANS, THE ABOVE SCALES MAY BE USED.

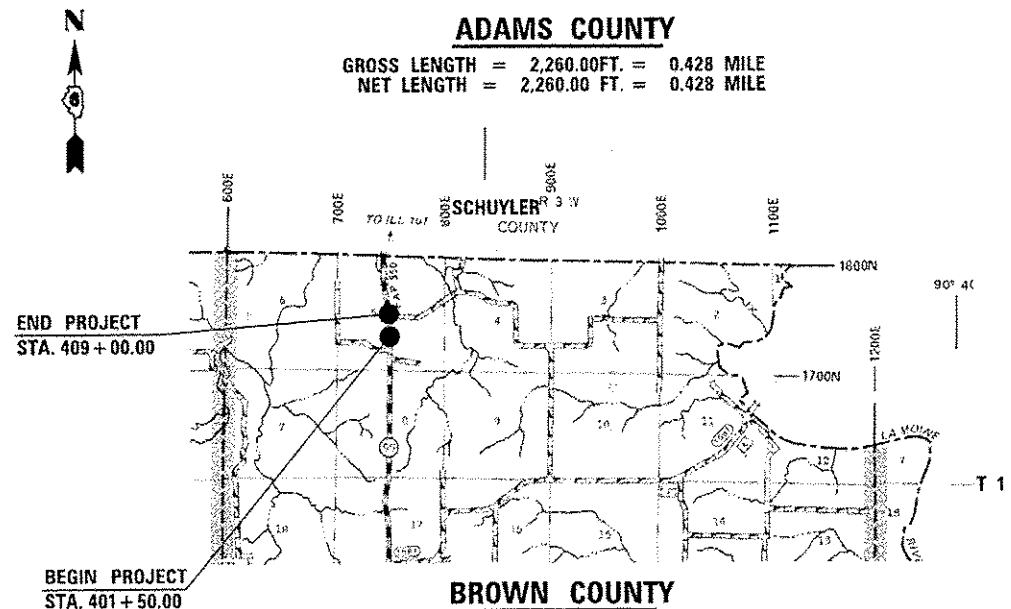
J.U.L.I.E.
JOINT UTILITY LOCATION INFORMATION FOR EXCAVATION
1-800-892-0123
OR 811

SENIOR TEAM ENGINEER: MARK DUST (217) 785-0597
TEAM MANAGER: JARED MARTIN (217) 524-0064

CONTRACT NO. 72H01



GROSS LENGTH = 2,260.00 FT. = 0.428 MILE
NET LENGTH = 2,260.00 FT. = 0.428 MILE



GROSS LENGTH = 750.00 FT. = 0.142 MILE
NET LENGTH = 750.00 FT. = 0.142 MILE

TRAFFIC COUNT

IL-104 / ADAMS COUNTY	IL-99 / BROWN COUNTY
ADT = 625 (2013)	ADT = 400 (2013)
PV = 525 (84.0%)	PV = 80 (20.0%)
SU = 50 (8.0%)	SU = 20 (5.0%)
MU = 50 (8.0%)	MU = 300 (75.0%)

STATE OF ILLINOIS
DEPARTMENT OF TRANSPORTATION
DIVISION OF HIGHWAYS

SUBMITTED April 18 2014
R. J. Smith
DEPUTY DIRECTOR OF HIGHWAYS, REGION ENGINEER

May 9 2014
John D. Baranelli, PE, P.E.
ENGINEER OF DESIGN AND ENVIRONMENT

May 9 2014
Omur Osman, PE, P.E.
DIRECTOR OF HIGHWAYS, CHIEF ENGINEER

PRINTED BY THE AUTHORITY
OF THE STATE OF ILLINOIS

GENERAL NOTES

1. ANY REFERENCE TO A STANDARD IN THESE PLANS SHALL BE INTERPRETED TO MEAN THE EDITION AS INDICATED BY THE SUB NUMBER LISTED IN THE INDEX OF SHEETS OR THE COPY OF THE STANDARD INCLUDED IN THESE PLANS.
2. IN ADDITION TO FIELD SURVEYS, PLAN DIMENSIONS AND DETAILS RELATIVE TO THE EXISTING FACILITIES HAVE BEEN TAKEN FROM EXISTING PLANS AND ARE SUBJECT TO CONSTRUCTION VARIATIONS. IT SHALL BE THE CONTRACTOR'S RESPONSIBILITY TO VERIFY SUCH DIMENSIONS AND DETAILS IN THE FIELD. SUCH VARIATIONS SHALL NOT BE A CAUSE FOR ADDITIONAL COMPENSATION DUE TO A CHANGE IN THE SCOPE OF WORK; HOWEVER, THE CONTRACTOR WILL BE PAID FOR THE QUANTITY ACTUALLY FURNISHED AT THE UNIT PRICE BID FOR THE WORK.
3. ACCESS TO ALL ENTRANCES AND SIDE ROADS SHALL BE MAINTAINED AT ALL TIMES.
4. THE CONTRACTOR SHALL BE RESPONSIBLE FOR PROTECTING UTILITY PROPERTY FROM CONSTRUCTION OPERATIONS, AS OUTLINED IN ARTICLE 107.31 OF THE STANDARD SPECIFICATIONS. THE J.U.L.I.E. NUMBER IS 1-800-892-0123. A MINIMUM OF 48 HOURS ADVANCE NOTICE IS REQUIRED.
5. THE THICKNESS OF BITUMINOUS MIXTURES SHOWN ON THE PLANS IS THE NOMINAL THICKNESS. DEVIATIONS FROM THE NOMINAL THICKNESS WILL BE PERMITTED WHEN SUCH DEVIATIONS OCCUR DUE TO IRREGULARITIES IN THE EXISTING SURFACE OR BASE ON WHICH THE BITUMINOUS MIXTURE IS PLACED.
6. ALL SAW CUTS, NECESSARY TO COMPLETE THE WORK DETAILED IN THESE PLANS, SHALL BE INCLUDED IN THE COST FOR THE VARIOUS PAY ITEMS INVOLVED. THE MINIMUM SAW CUT DEPTH IN THE PAVEMENT SHALL BE 1 1/2 " UNLESS OTHERWISE SPECIFIED IN A DETAIL SHOWN IN THE PLANS.
7. UNLESS DIRECTED BY THE ENGINEER, PAVEMENT MARKING LINES SHALL NOT BE LAID DIRECTLY OVER A LONGITUDINAL CRACK OR JOINT NOR OVER A TAR OR ASPHALT PAINTED LINE. THE EDGE OF A CENTERLINE OR LANE LINE SHALL BE OFFSET A MINIMUM DISTANCE OF 2" FROM A LONGITUDINAL CRACK OR JOINT. EDGE LINES SHALL BE APPROXIMATELY 2" FROM THE EDGE LINE OF PAVEMENT. SEE SECTION 780 OF THE STANDARD SPECIFICATIONS FOR TRAFFIC CONTROL ITEMS.
8. NO PASSING ZONES TO BE FIELD VERIFIED BY THE BUREAU OF OPERATIONS. THE RESIDENT ENGINEER SHALL NOTIFY THE BUREAU OF OPERATIONS AT LEAST 14 DAYS PRIOR TO PLACEMENT OF FINAL PERMANENT PAVEMENT MARKING. (PH; 217-785-5312)
9. THE FOLLOWING RATES OF APPLICATION HAVE BEEN USED TO CALCULATE THE PLAN QUANTITIES:
 BITUMINOUS MATERIALS (PRIME COAT) 0.00038 TON/SQ. YD. (ON PAVEMENT)
 BITUMINOUS MATERIALS (PRIME COAT) 0.001425 TON/SQ. YD. (ON AGG.)
 AGGREGATE PRIME COAT 0.002 TON/SQ. YD.
 BITUMINOUS CONCRETE SURFACE / BINDER 0.056 TON/SQ. YD. PER 1"
 AGGREGATE MATERIAL 2.05 TON/CU. YD.
10. THE EXISTING ROAD SIGNS THAT INTERFERE WITH CONSTRUCTION WILL BE REMOVED OR RELOCATED AS DIRECTED BY THE ENGINEER. AFTER THE CONSTRUCTION IS COMPLETED, THE CONTRACTOR WILL REPLACE THE SIGNS AS DIRECTED BY THE ENGINEER. THIS WORK WILL NOT BE PAID SEPARATELY BUT SHALL BE CONSIDERED INCLUDED IN THE CONTRACT, AND NO COMPENSATION WILL BE ALLOWED.
11. WHERE SECTION OR SUBSECTION MONUMENTS ARE ENCOUNTERED THE ENGINEER SHALL BE NOTIFIED BEFORE SUCH MONUMENTS ARE REMOVED. THE CONTRACTOR SHALL PROTECT AND CAREFULLY PRESERVE ALL MONUMENTS UNTIL AN AUTHORIZED SURVEYOR OR AGENT HAS WITNESSED OR OTHERWISE REFERENCED THEIR LOCATION. THE CONTRACTOR SHALL BE RESPONSIBLE FOR HAVING AN AUTHORIZED SURVEYOR REESTABLISH ANY SECTION OR SUBSECTION MONUMENTS DESTROYED BY HIS OPERATIONS.

COMMITMENTS

1. THE RESIDENT ENGINEER SHALL CONTACT STUDIES & PLANS CONCERNING ANY MAJOR PLAN CHANGE. TO MAKE SURE NO PREVIOUS COMMITMENTS (NOT LISTED) WERE MADE AFFECTING THE DESIGN AND ALLOW AN IMPROVED DESIGN FOR FUTURE PROJECTS.

THE FOLLOWING MIXTURE REQUIREMENTS ARE APPLICABLE FOR THIS PROJECT:

MIXTURE USE(S):	HMA SURFACE COURSE/ INCIDENTAL HMA	HMA LEVEL BINDER	PATCHING
PG:	PG 64-22	PG 64-22	PG 64-22
DESIGN AIR VOIDS:	4.0% @ N 50	4.0% @ N 50	4.0% @ N 50
MIXTURE COMPOSITION: (GRADATION MIXTURE)	IL 9.5	IL 9.5	IL 19.0
FRICTION AGGREGATE:	MIX "C"	N/A	N/A
QUALITY MANAGEMENT	OC/OA	OC/OA	OC/OA

ALL TIES ARE
CHSLD "X" IN CURB



CENTER SECTION 8

SET RR SPIKE

DISTRICT SIX	
EXAMINED	APRIL 9th 20 14
<i>John C. W. Young</i>	
OPERATIONS ENGINEER	
EXAMINED	APRIL 11 20 14
<i>Tommy J. ...</i>	
PROJECT IMPLEMENTATION ENGINEER	
EXAMINED	April 11 20 14
<i>Jeff P. Meyer</i>	
PROGRAM DEVELOPMENT ENGINEER	

SUMMARY OF QUANTITIES				100% STATE	
				CONSTRUCTION CODE	
CODE NO.	ITEM	UNIT	TOTAL QUANTITY	ADAMS COUNTY	BROWN COUNTY
				ROADWAY	ROADWAY
				0005 RURAL	0005 RURAL
20200600	EXCAVATING AND GRADING EXISTING SHOULDER	UNIT	26	26	0
28100705	STONE DUMPED RIPRAP, CLASS A3	SQ YD	222	0	222
31101400	SUBBASE GRANULAR MATERIAL, TYPE B 6"	SQ YD	1456	1456	0
35400500	PORTLAND CEMENT CONCRETE BASE COURSE WIDENING 10"	SQ YD	582	582	0
35800100	PREPARATION OF BASE	SQ YD	171	171	0
40200800	AGGREGATE SURFACE COURSE, TYPE B	TON	4	4	0
40201000	AGGREGATE FOR TEMPORARY ACCESS	TON	15	15	0
40600200	BITUMINOUS MATERIALS (PRIME COAT)	TON	4	3	1
40600300	AGGREGATE (PRIME COAT)	TON	16	12	4
40600625	LEVELING BINDER (MACHINE METHOD), N50	TON	253	253	0
40600982	HOT-MIX ASPHALT SURFACE REMOVAL - BUTT JOINT	SQ YD	80	40	40
40600990	TEMPORARY RAMP	SQ YD	80	40	40
40603310	HOT-MIX ASPHALT SURFACE COURSE, MIX "C", N50	TON	674	506	168
40800050	INCIDENTAL HOT-MIX ASPHALT SURFACING	TON	19	19	0

SUMMARY OF QUANTITIES				100% STATE	
				CONSTRUCTION CODE	
CODE NO.	ITEM	UNIT	TOTAL QUANTITY	ADAMS COUNTY	BROWN COUNTY
				ROADWAY	ROADWAY
				0005 RURAL	0005 RURAL
44000157	HOT-MIX ASPHALT SURFACE REMOVAL, 2"	SO YD	1960	0	1960
44000158	HOT-MIX ASPHALT SURFACE REMOVAL, 2 1/4"	SO YD	5987	5987	0
44000400	GUTTER REMOVAL	FOOT	2621	2621	0
44200180	PAVEMENT PATCHING, TYPE II, 15 INCH	SO YD	20	20	0
44200184	PAVEMENT PATCHING, TYPE III, 15 INCH	SO YD	22	22	0
44200186	PAVEMENT PATCHING, TYPE IV, 15 INCH	SO YD	30	30	0
44300200	STRIP REFLECTIVE CRACK CONTROL TREATMENT	FOOT	2621	2621	0
60100060	CONCRETE HEADWALLS FOR PIPE DRAINS	EACH	8	8	0
60100080	FRENCH DRAINS	CU YD	17	0	17
60107600	PIPE UNDERDRAINS 4"	FOOT	2621	2621	0
60108100	PIPE UNDERDRAINS 4" (SPECIAL)	FOOT	120	120	0
60600095	CLASS SI CONCRETE (OUTLET)	CU YD	46	46	0
60602500	CONCRETE CUTTER, TYPE-A	FOOT	2621	2621	0
66700205	PERMANENT SURVEY MARKERS, TYPE I	EACH	1	1	0

111

00131413

SUMMARY OF QUANTITIES				100% STATE	
				CONSTRUCTION CODE	
CODE NO.	ITEM	UNIT	TOTAL QUANTITY	ADAMS COUNTY	BROWN COUNTY
				ROADWAY 0005	ROADWAY 0005
				RURAL	RURAL
67100100	MOBILIZATION	L SUM	1	0.8	0.2
70100450	TRAFFIC CONTROL AND PROTECTION, STANDARD 701201	L SUM	1	0.7	0.3
70100460	TRAFFIC CONTROL AND PROTECTION, STANDARD 701306	L SUM	1	0.7	0.3
70100500	TRAFFIC CONTROL AND PROTECTION, STANDARD 701326	L SUM	1	1	0
70103815	TRAFFIC CONTROL SURVEILLANCE	CAL DA	10	10	0
70300100	SHORT TERM PAVEMENT MARKING	FOOT	848	690	158
70301000	WORK ZONE PAVEMENT MARKING REMOVAL	SQ FT	301	226	75
* 78001120	PAINT PAVEMENT MARKING - LINE 5"	FOOT	9360	6360	3000
* 78100100	RAISED REFLECTIVE PAVEMENT MARKER	EACH	39	29	10
78300200	RAISED REFLECTIVE PAVEMENT MARKER REMOVAL	EACH	39	29	10
X2020410	EARTH EXCAVATION (SPECIAL)	CU YD	185	0	185
X6060097	CLASS SI CONCRETE (OUTLET), SPECIAL	CU YD	46	46	0
* X6330210	VERTICAL ADJUSTMENT OF TRAFFIC BARRIER TERMINAL TYPE 1, SPECIAL (TANGENT)	EACH	2	0	2
X6062700	CONCRETE GUTTER, TYPE A (SPECIAL)	FOOT	2621	2621	0
* X6330900	VERTICAL ADJUSTMENT OF GUARDRAIL	FOOT	600	0	600

13

* SPECIALTY ITEM

PAVEMENT SCHEDULE										
LOCATION STATION TO STATION	LENGTH	WIDTH	HMA SURF. REM. BUTT-JOINT (SQ YD)	HMA SURF. REM. (2 1/4") (SQ YD)	LEVELING BINDER (MM) N50 (3/4") (TON)	HMA SURF. COURSE MIX "C" N50 (1 1/2") (TON)	BIT. MAT. PRIME CT. (TON)	AGG. PRIME CT. (TON)	STRIP REFLECTIVE CRACK CONTROL (FOOT)	
FAP 745 (IL 104)										
STA. 1253+70.00 TO STA. 1253+77.50	7.50	24	20.00	-	0.84	1.68	0.01	0.04	7.5	
STA. 1253+77.50 TO STA. 1276+22.50	2245.00	24	-	5986.67	251.44	502.88	2.27	11.97	2245.0	
STA. 1276+22.50 TO STA. 1276+30.00	7.50	24	20.00	-	0.84	1.68	0.01	0.04	7.5	
TOTAL			40.0	5986.7	253.1	506.2	2.3	12.1	2260.0	

GUTTER SCHEDULE							
LOCATION STATION TO STATION	GUTTER REMOVAL (FOOT)	EXCAVATING AND GRADING EXISTING SHOULDER (UNIT)	CONCRETE GUTTER TYPE A (FOOT)	CLASS SI CONCRETE (OUTLET) (CU YD)	PIPE UNDERDRAINS 4" (FOOT)	CONCRETE HEADWALLS FOR PIPE DRAINS (EACH)	PIPE UNDERDRAIN 4" (SPECIAL) (FOOT)
FAP 745 (IL 104) LEFT							
STA. 1253+70.00 TO STA. 1256+60.00	290.0	2.9	290.0	4	290	1	20.0
STA. 1262+70.00 TO STA. 1265+60.00	290.0	2.9	290.0	8.5	290	1	20.0
STA. 1267+81.00 TO STA. 1269+74.00	193.0	1.93	193.0	7.5	193	1	20.0
STA. 1271+77.00 TO STA. 1276+30.00	453.0	4.53	453.0	3	453	1	20.0
RIGHT							
STA. 1253+70.00 TO STA. 1257+90.00	420.0	4.2	420.0	4	420	1	20.0
STA. 1262+29.00 TO STA. 1265+60.00	331.0	3.31	331.0	8.5	331	1	20.0
STA. 1267+61.00 TO STA. 1269+10.00	149.0	1.49	149.0	7.5	149	1	20.0
STA. 1271+35.00 TO STA. 1276+30.00	495.0	4.95	495.0	3	495	1	20.0
TOTAL		2621.0	26.2	2621.0	46.0	2621.0	160.0

PAVEMENT PATCHING			
LOCATION	PATCHING TYPE II 15 INCH (SQ YD)	PATCHING TYPE III 15 INCH (SQ YD)	PATCHING TYPE IV 15 INCH (SQ YD)
FAP 745 (IL 104)	20.0	22.0	30.0
TOTAL		20.0	30.0

TEMPORARY RAMPS			
LOCATION STATION	LENGTH (FT)	WIDTH (FT)	AREA (SQ YD)
FAP 745 (IL-100)			
MAINLINE			
1253+70.00	7.5	24	20
1276+30.00	7.5	24	20
TOTAL			40

SIDEROAD AND ENTRANCE SCHEDULE										
LOCATION FAP 745 (IL 104)	WIDTH ACROSS FRONT (FT)	WIDTH ACROSS BACK (FT)	LENGTH OF IMPROVEMENT FROM EOP (FT)	EXIST. SURF. TYPE	PREPARATION OF BASE (SQ YD)	INCIDENTAL HOT-MIX ASPH. SURF. (TON)	BIT. MAT. PRIME COAT (TON)	AGGREGATE PRIME COAT (TON)	AGGREGATE SURF. CSE. TYPE B (TON)	AGGREGATE FOR TEMP. ACCESS (TON)
P.E. LT. STA. 1256+08	42	12	8	AGG	24.00	2.69	0.01	0.05	1.00	2.00
P.E. RT. STA. 1257+32	42	12	8	AGG	24.00	2.69	0.01	0.05	1.00	2.00
P.E. LT. STA. 1262+37	42	12	8	AGG	24.00	2.69	0.01	0.05	1.00	2.00
M.B.T. RT. STA. 1262+70	64	20	8	AGG	37.33	4.18	0.01	0.07	-	-
M.B.T. RT. STA. 1269+26	64	20	8	AGG	37.33	4.18	0.01	0.07	-	-
P.E. LT. STA. 1270+08	42	12	8	AGG	24.00	2.69	0.01	0.05	1.00	2.00
TOTAL					170.66	19.12	0.06	0.34	4.00	8.00

PERMANENT SURVEY MARKER			
LOCATION STATION	LOCATION	EXISTING MONUMENT DESCRIPTION	PERMANENT SURVEY MARKERS, TYPE I (EACH)
FAP 745 (IL 104)			
STA. 1259+48.99	CENTER, SECTION 8	RAILROAD SPIKE	1
TOTAL			1

SUBBASE GRANULAR MATERIAL SCHEDULE				
LOCATION STATION TO STATION	LENGTH	WIDTH	SUBBASE GRANULAR MATERIAL TYPE B, 6" (SQ YD)	
FAP 745 (IL 104)				
LEFT				
STA. 1253+70.00 TO STA. 1256+60.00	290	5	161.1	
STA. 1262+70.00 TO STA. 1265+60.00	290	5	161.1	
STA. 1267+81.00 TO STA. 1269+74.00	193	5	107.2	
STA. 1271+77.00 TO STA. 1276+30.00	453	5	251.7	
RIGHT				
STA. 1253+70.00 TO STA. 1257+90.00	420	5	233.3	
STA. 1262+29.00 TO STA. 1265+60.00	331	5	183.9	
STA. 1267+61.00 TO STA. 1269+10.00	149	5	82.8	
STA. 1271+35.00 TO STA. 1276+30.00	495	5	275.0	
TOTAL			1456.1	

RAISED REFLECTIVE PAVEMENT MARKERS			
LOCATION STATION TO STATION	LENGTH (FT)	TWO-WAY AMBER (EACH)	REMOVAL (EACH)
FAP 745 (IL 104)			
STA. 1253+70.0 TO STA. 1276+30.0	2260.00	29	29
TOTAL		29	29

SHORT-TERM PAVEMENT MARKING					
LOCATION STATION TO STATION	LENGTH (FT)	SPACING	NUMBER OF APPLICATIONS	SHORT-TERM PAVE MARK (FT)	WORK ZONE PAVE MARK REM (SQ FT)
FAP 745 (IL 104)					
STA. 1253+70.0 TO STA. 1276+30.0	2260.00	4' / 40'	3	690.0	226
TOTAL				690	226

PCC BASE COURSE WIDENING SCHEDULE				
LOCATION STATION TO STATION	LENGTH	WIDTH	PCC BASE COURSE WIDENING, 10" (SQ YD)	STRIP REFLECTIVE CRACK CONTROL (FOOT)
FAP 745 (IL 104)				
LEFT				
STA. 1253+70.00 TO STA. 1256+60.00	290	2	64.4	290
STA. 1262+70.00 TO STA. 1265+60.00	290	2	64.4	290
STA. 1267+81.00 TO STA. 1269+74.00	193	2	42.9	193
STA. 1271+77.00 TO STA. 1276+30.00	453	2	100.7	453
RIGHT				
STA. 1253+70.00 TO STA. 1257+90.00	420	2	93.3	420
STA. 1262+29.00 TO STA. 1265+60.00	331	2	73.6	331
STA. 1267+61.00 TO STA. 1269+10.00	149	2	33.1	149
STA. 1271+35.00 TO STA. 1276+30.00	495	2	110.0	495
TOTAL			582.5	2621.0

PAVEMENT MARKING					
LOCATION STATION TO STATION	DESCRIPTION	LENGTH (FT)	SPACING	LINE-5"	
				YELLOW (FT)	WHITE (FT)
FAP 745 (IL 104)					
STA. 1253+70.00 TO STA. 1275+25.00	SKIP-DASH (CENTER)	2155.00	10' @ 40'	538.75	-
STA. 1264+34.00 TO STA. 1276+30.00	SOLID (EAST BOUND NPZ)	1196.00	-	1196.00	-
STA. 1275+25.00 TO STA. 1276+30.00	SOLID (WEST BOUND NPZ)	105.00	-	105	-
STA. 1253+70.00 TO STA. 1276+30.00	SOLID (EDGE LINE RT)	2260.00	-	-	2260.00
STA. 1253+70.00 TO STA. 1276+30.00	SOLID (EDGE LINE LT)	2260.00	-	-	2260.00
TOTAL				1839.75	4520.00

TEMPORARY RAMPS			
LOCATION STATION	LENGTH (FT)	WIDTH (FT)	AREA (SQ YD)
FAP 550 (IL-99)			
MAINLINE			
401+50.00	7.5	24	20
409+00.00	7.5	24	20
TOTAL			40

SHORT-TERM PAVEMENT MARKING					
LOCATION STATION TO STATION	LENGTH (FT)	SPACING	NUMBER OF APPLICATIONS	SHORT-TERM PAVE MARK (FT)	WORK ZONE PAVE MARK REM (SQ FT)
FAP 550 (IL 99)					
STA. 401+50.00 TO STA. 409+00.00	750.00	4' / 40'	2	158.0	75
TOTAL				158	75

GUARDRAIL SCHEDULE			
LOCATION STATION TO STATION	VERTICAL ADJUSTMENT OF GUARDRAIL (FOOT)	VERT. ADJ. TRAF. BAR. TERM. TYPE 1 SPL (TANGENT) (EACH)	
FAP 550 (IL-99)			
RIGHT			
STA. 402+35.00 TO STA. 408+35.00	600	2	
TOTAL		600	2

PAVEMENT MARKING					
LOCATION STATION TO STATION	DESCRIPTION	LENGTH (FT)	SPACING	LINE-5"	
				YELLOW (FT)	WHITE (FT)
FAP 550 (IL 99)					
STA. 401+50.00 TO STA. 409+00.00	SOLID (NORTH BOUND NPZ)	750.00	-	750.00	-
STA. 401+50.00 TO STA. 409+00.00	SOLID (SOUTH BOUND NPZ)	750.00	-	750.00	-
STA. 401+50.00 TO STA. 409+00.00	SOLID (EDGE LINE RT)	750.00	-	-	750.00
STA. 401+50.00 TO STA. 409+00.00	SOLID (EDGE LINE LT)	750.00	-	-	750.00
TOTAL				1500	1500

RAISED REFLECTIVE PAVEMENT MARKERS			
LOCATION STATION TO STATION	LENGTH (FT)	TWO-WAY AMBER (EACH)	REMOVAL (EACH)
FAP 550 (IL 99)			
STA. 401+50.00 TO STA. 409+00.00	750.00	10	10
TOTAL		10	10

PAVEMENT SCHEDULE							
LOCATION STATION TO STATION	LENGTH	WIDTH	HMA SURF. REM. BUTT-JOINT (SQ YD)	HMA SURF. REM. (2") (SQ YD)	HMA SURF. COURSE MIX "C" N50 (2") (TON)	BIT. MAT. PRIME CT. (TON)	AGG. PRIME CT. (TON)
FAP 550 (IL 99)							
STA. 401+50.00 TO STA. 401+57.50	7.50	24	20.00	-	1.68	0.01	0.04
STA. 401+57.50 TO STA. 408+92.50	735.00	24	-	1960.00	164.64	0.74	3.92
STA. 408+92.50 TO STA. 409+00.00	7.50	24	20.00	-	1.68	0.01	0.04
TOTAL			40.0	1960.0	168.0	0.8	4.0

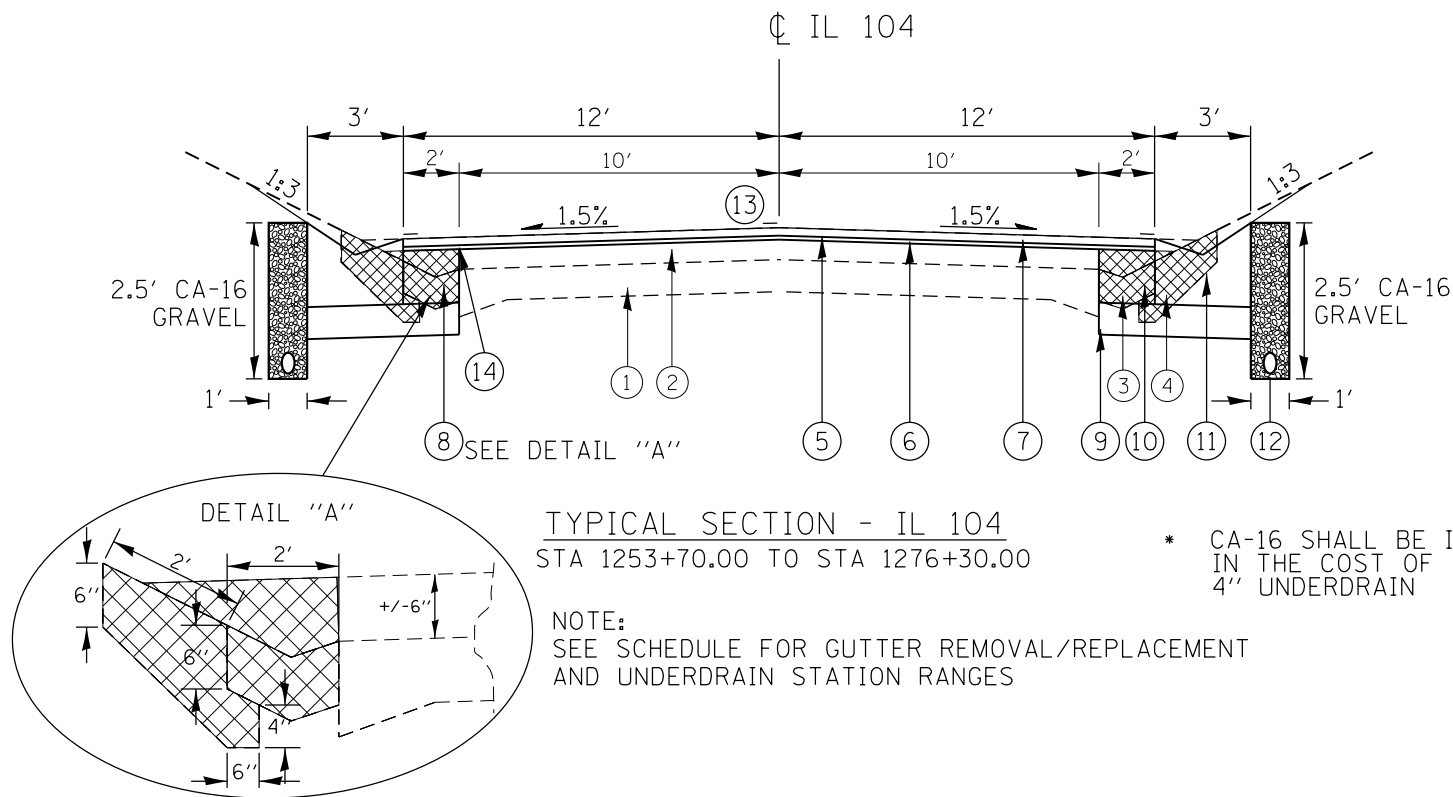
RIPRAP SCHEDULE					
LOCATION STATION	LENGTH (FT)	WIDTH (FT)	RIPRAP CLASS 3 (SQ YD)	EARTH EX (SPECIAL) (CU YD)	FRENCH DRAIN (CU YD)
FAP 550 (IL-99)					
MAINLINE					
STA. 432+00.00 TO STA. 433+00.00	100	20	222.22	185.20	
STA. 432+00.00 TO STA. 433+50.00	150	1			16.60
TOTAL			222.22	185.20	16.60

FILE NAME =	USER NAME = sparksgw	DESIGNED -	REVISED -
ct:\pw\work\p\dot\sparksgw\0387531\0672\01-sht-schedule.dgn		DRAWN -	REVISED -
Default	PLOT SCALE = 100.0000' / 1in.	CHECKED -	REVISED -
	PLOT DATE = Apr-18-2014 09:49:41AM	DATE -	REVISED -

STATE OF ILLINOIS
DEPARTMENT OF TRANSPORTATION

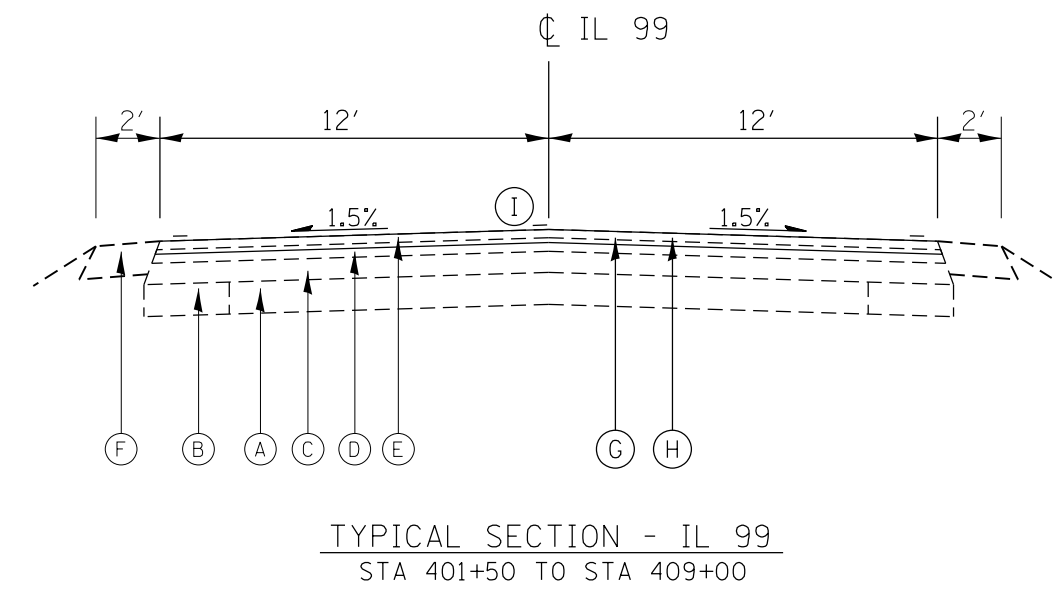
SCHEDULE OF QUANTITIES			
IL-99 BROWN COUNTY			
SCALE:	SHEET	OF SHEETS	STA. TO STA.

F.A.P. RTE.	SECTION	COUNTY	TOTAL SHEETS	SHEET NO.
**	*	*	12	8
CONTRACT NO.			72H01	
ILLINOIS FED. AID PROJECT				



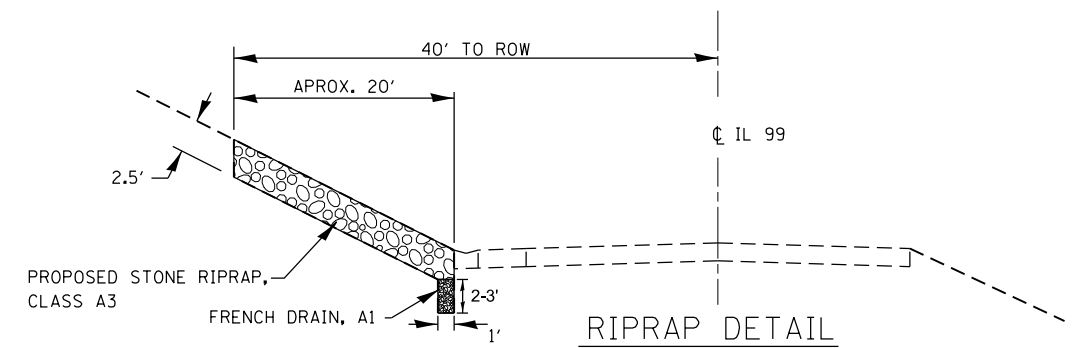
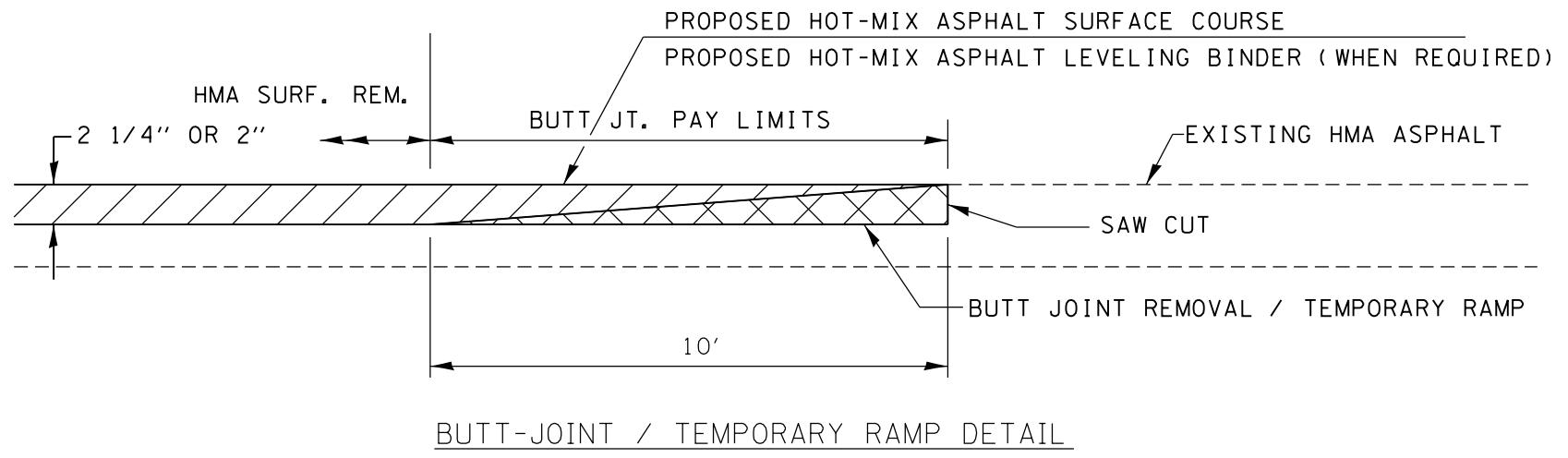
LEGEND

- ① EX PCC PAVEMENT (9 - 6 - 9)
- ② EX HMA OVERLAY, 6" & VARIES
- ③ EX CONCRETE GUTTER TYPE B
- ④ EX CONCRETE GUTTER SPECIAL
- ⑤ PR HMA SURFACE REMOVAL, 2 1/4"
- ⑥ PR HMA LEVEL BINDER N50, 3/4"
- ⑦ PR HMA SURFACE MIX "C" N50, 1 1/2"
- ⑧ PR GUTTER REMOVAL
- ⑨ PR SUB-BASE GRANULAR MATERIAL, TY B 6"
- ⑩ PR PCC BASE COURSE WIDENING, 10"
- ⑪ PR CONCRETE GUTTER, TY A
- ⑫ PR PIPE UNDERDRAIN, 4"
- ⑬ PR PAVEMENT MARKING, 5"
- ⑭ STRIP REFLECTIVE CRACK CONTROL



LEGEND

- Ⓐ EX AGGREGATE BASE COURSE & SURFACE TREATMENT, 6"
- Ⓑ EX HMA BASE COURSE WIDENING
- Ⓒ EX HMA BINDER COURSE, 4"
- Ⓓ EX HMA BINDER COURSE, 2 1/2"
- Ⓔ EX HMA SURFACE COURSE, 1 1/2"
- Ⓕ EX AGGREGATE SHOULDER, 6"
- Ⓖ PR HMA SURFACE REMOVAL, 2"
- Ⓗ PR HMA SURFACE MIX "C" N50, 2"
- Ⓘ PR PAVEMENT MARKING, 5"



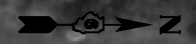
FILE NAME =	USER NAME = sparksgw	DESIGNED -	REVISED -
ct:\pw\work\p\id\dot\sparksgw\100387531\0672\H01-sht-typical.dgn		DRAWN -	REVISED -
Default	PLOT SCALE = 40.0000' / in.	CHECKED -	REVISED -
	PLOT DATE = Apr-18-2014 10:35:04AM	DATE -	REVISED -

STATE OF ILLINOIS
 DEPARTMENT OF TRANSPORTATION

TYPICAL SECTIONS / DETAILS
 FAP 550/745 (IL 99/104)

SCALE:	SHEET	OF	SHEETS	STA.	TO	STA.
--------	-------	----	--------	------	----	------

F.A.P. RTE.	SECTION	COUNTY	TOTAL SHEETS	SHEET NO.
			12	9
CONTRACT NO. 72H01			ILLINOIS FED. AID PROJECT	



SCHUYLER COUNTY
BROWN COUNTY

IL 99

APROXIMATE LOCATION OF
SLOPE FAILURE, ACTUAL
LOCATION SHALL BE GIVEN BY
RICK WALKER OF DISTRICT 6
OPERATIONS - 217-785-5304

APROX. 665' SOUTH OF
THE COUNTY LINE

PROP. EARTH EX (SPECIAL)

PROP. RIPRAP CLASS A3

PROP. FRENCH DRAIN

NOTE:

- EXISTING BOULDERS AND ROCKS TO BE REMOVED AND REPLACED WITH RIPRAP, SEE DETAIL.
- PROPOSED FRENCH DRAIN TO DRAIN SLOPE TO BE DAYLIGHTED PAST EXISTING GUTTER OUTLET TO THE NORTH.

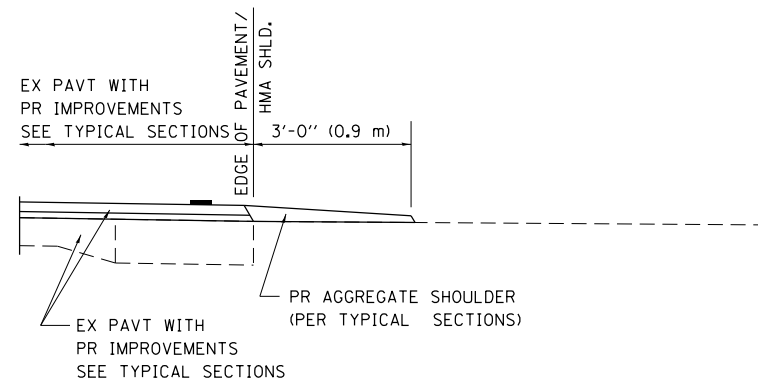
FILE NAME =	USER NAME = sparksgw	DESIGNED -	REVISED -
ct:\pw\work\p\idot\sparksgw\10387531\0672\1001-sht-plan.dgn		DRAWN -	REVISED -
	PLOT SCALE = 100.0000' / 1in.	CHECKED -	REVISED -
Default	PLOT DATE = Apr-18-2014 09:49:57AM	DATE -	REVISED -

**STATE OF ILLINOIS
DEPARTMENT OF TRANSPORTATION**

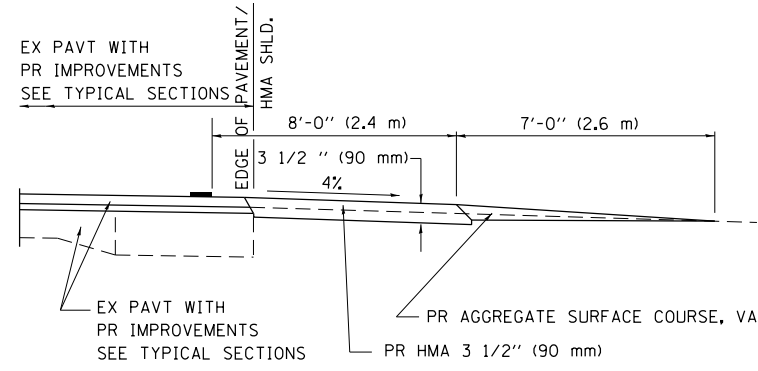
**PLAN SHEET
FAP 550 (IL 99)**

SCALE: SHEET OF SHEETS STA. TO STA.

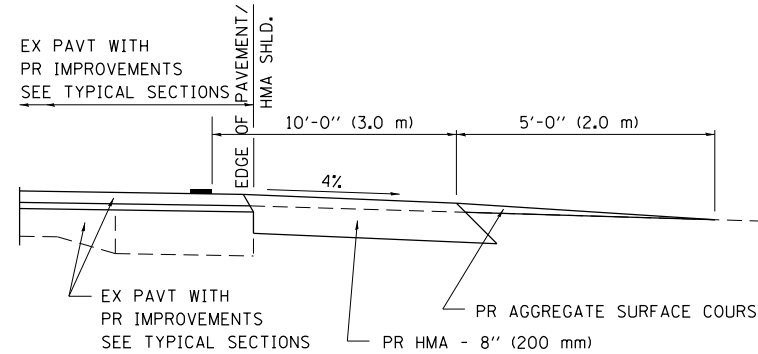
F.A.P. RTE.	SECTION	COUNTY	TOTAL SHEETS	SHEET NO.
..	.	.	12	10
CONTRACT NO. 72H01			ILLINOIS FED. AID PROJECT	



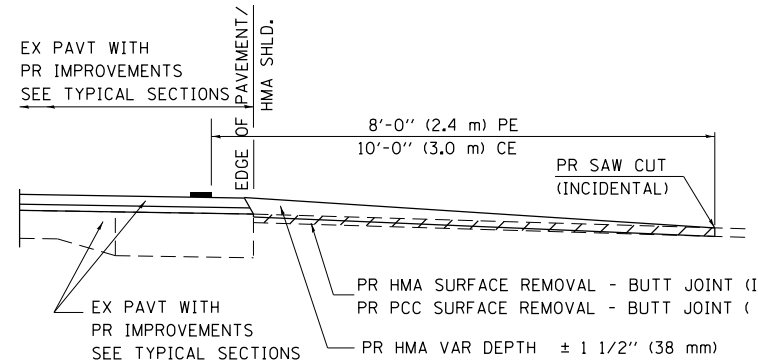
SECTION A-A FOR EX EARTH/AGGREGATE FE



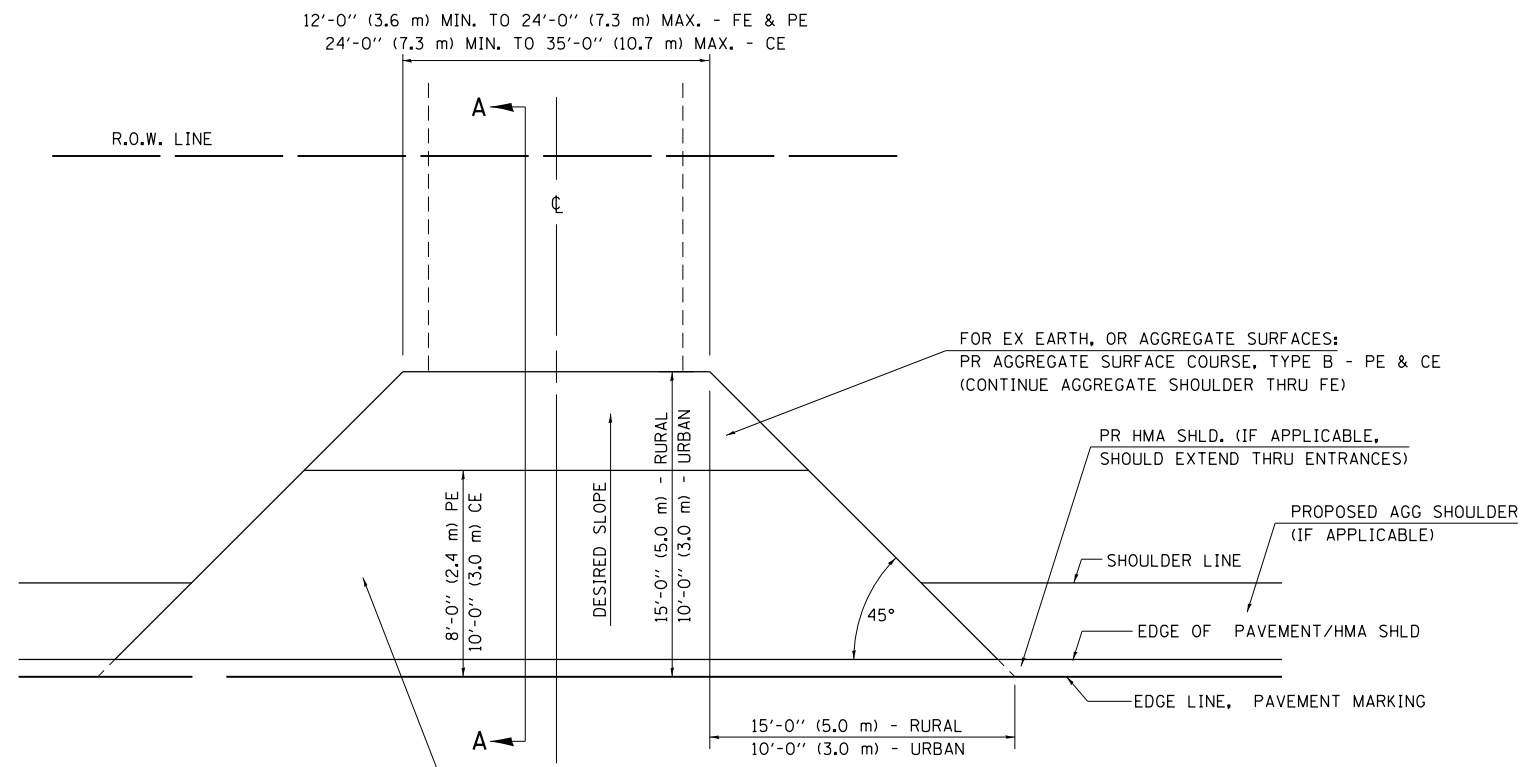
SECTION A-A FOR EX EARTH/AGGREGATE PE



SECTION A-A FOR EX EARTH/AGGREGATE CE & SIDE ROAD



SECTION A-A FOR EX HMA/PC CONCRETE PE, CE & SIDE ROAD



FOR EX EARTH OR AGGREGATE SURFACES:
 PR HMA SURFACE REMOVAL (IF APPLICABLE)
 PR AGGREGATE SHOULDER THRU - FE
 PR HMA CONCRETE 3 1/2" (90 mm) - PE
 PR HMA CONCRETE 8" (200 mm) - CE

FOR EX HMA CONCRETE SURFACES:
 PR HMA SURFACE REMOVAL-BUTT JOINT

FOR EX PCC SURFACES:
 PR PCC SURFACE REMOVAL-BUTT JOINT

GENERAL NOTES:

THE RESIDENT ENGINEER WILL DETERMINE THE EXACT TYPE OF IMPROVEMENT TO BE COMPLETED FOR ALL ENTRANCES, SIDEROADS AND MAILBOX TURNOUTS ON THIS PROJECT.

THE PLAN DETAILS AND SCHEDULES SHOULD BE USED AS A GUIDE FOR THE ENGINEER TO IMPLEMENT THE FINAL DESIGN. THE ENGINEER MAY DECIDE TO SALVAGE PORTIONS OF THE EXISTING ENTRANCE PAVEMENT STRUCTURE; THEREFORE, REDUCING PAY ITEM QUANTITIES. NO ADDITIONAL PAYMENT WILL BE ALLOWED FOR THIS REDUCTION IN QUANTITIES.

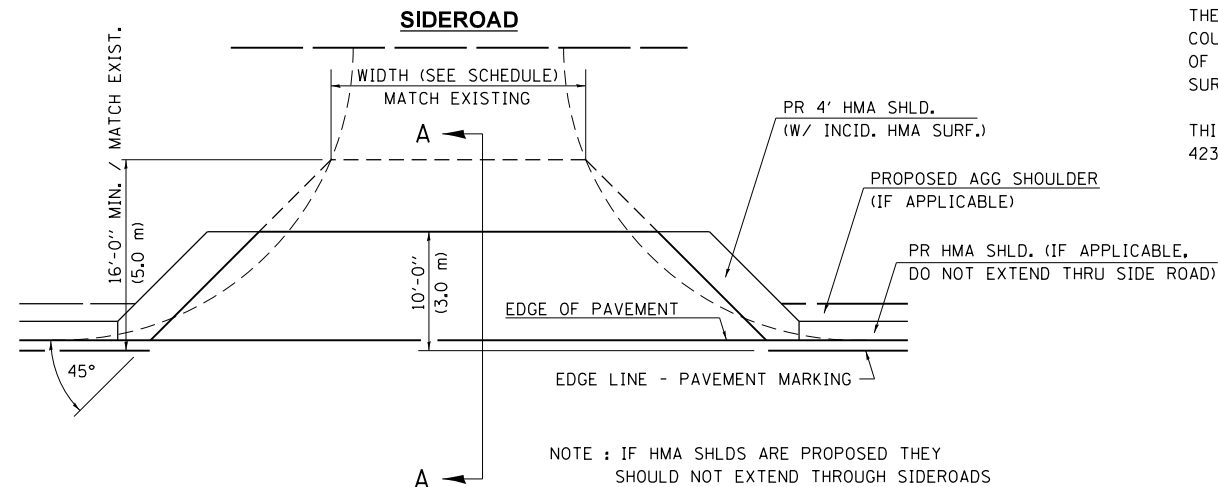
ANY WORK THE ENGINEER REQUIRES WHICH IS NOT COVERED BY A PAY ITEM CONTAINED IN THE PLANS WILL BE PAID FOR IN ACCORDANCE WITH ARTICLE 109.04 OF THE STANDARD SPECIFICATIONS.

HMA CONCRETE REQUIRED TO CONSTRUCT THE ENTRANCES SHALL BE IN ACCORDANCE WITH THE APPLICABLE PORTIONS OF SECTION 406 AND 408 OF THE STANDARD SPECIFICATIONS AND AS DIRECTED BY THE ENGINEER.

WHEN THE HMA CONCRETE PROPOSED FOR THE IMPROVEMENT IS THICKER THAN 3 INCHES (75 mm) AND REQUIRE PLACEMENT IN MORE THAN ONE LIFT. THE BOTTOM LIFT(S) SHALL MEET THE REQUIREMENTS OF HMA BASE COURSE IN SECTION 406 OF THE STANDARD SPECIFICATIONS AND THE TOP LIFT OF 2 INCHES (50 mm) SHALL MEET THE REQUIREMENTS OF HMA CONCRETE SURFACE COURSE, SUPERPAVE.

THIS WORK WILL BE PAID FOR IN ACCORDANCE WITH SECTIONS 351, 358, 408, 423 AND 440 OF THE STANDARD SPECIFICATIONS.

ALL DIMENSIONS ARE IN INCHES (MILLIMETERS) UNLESS OTHERWISE SHOWN.



NOTE: IF HMA SHLDS ARE PROPOSED THEY SHOULD NOT EXTEND THROUGH SIDEROADS

FILE NAME = c:\pwork\pwork\sparksq\0387531\0672\h01-sht-details.dgn	USER NAME = sparksq	DESIGNED -	REVISED - 2/19/03 JCN
ENT PPP.DGN	PLOT SCALE = 40.0000' / in.	DRAWN - CADD	REVISED - 4/01/04 JCN
	PLOT DATE = Apr-18-2014 09:50:06AM	CHECKED - JCN	REVISED -
		DATE - FEBRUARY 23, 1999	REVISED -

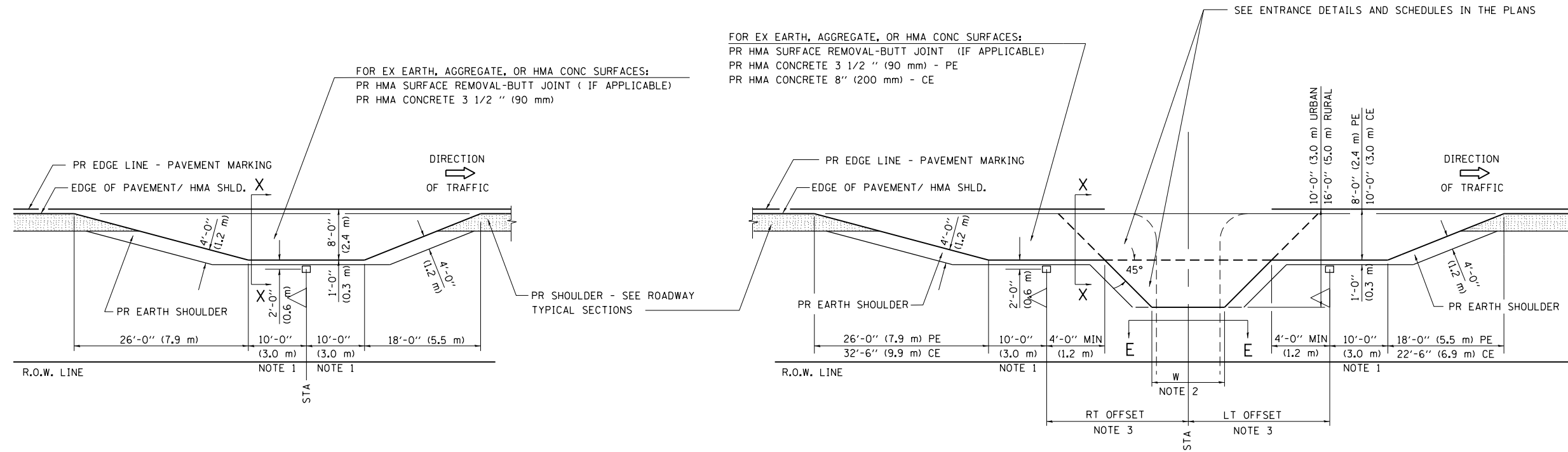
**STATE OF ILLINOIS
DEPARTMENT OF TRANSPORTATION**

**DIST. 6 DETAILS FOR RURAL/URBAN ENT., MAILBOX
TURNOUT & SIDEROADS W/O CONC. GUTTER (3P-PROJ.)**

SCALE: SHEET 1 OF 3 SHEETS STA. TO STA.

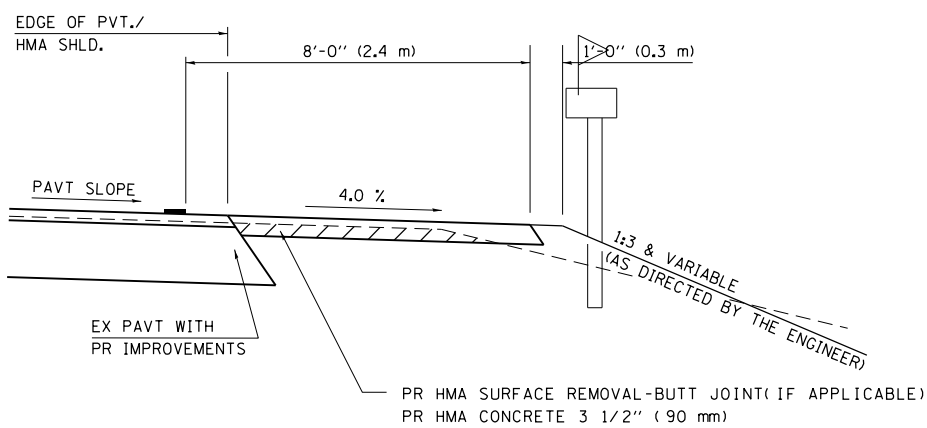
F.A.P. RTE.	SECTION	COUNTY	TOTAL SHEETS	SHEET NO.
..	.	.	12	11
			CONTRACT NO. 72H01	
ILLINOIS FED. AID PROJECT				

DETAILS OF MAILBOX TURNOUTS



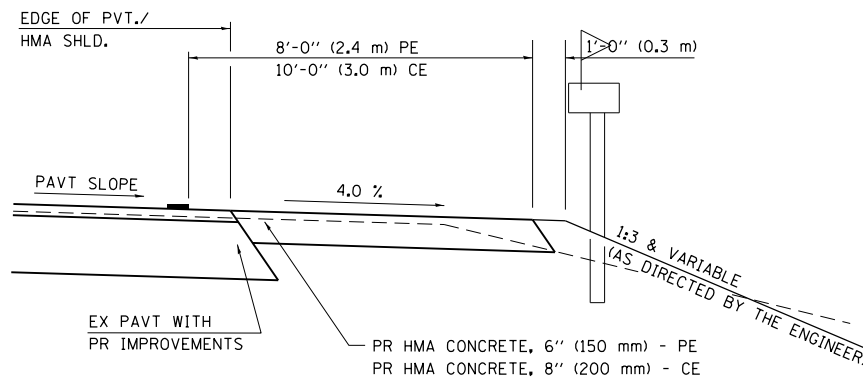
PLAN - MAILBOX TURNOUTS

PLAN - COMBINED MAILBOX TURNOUT WITH TRAILING OR LEADING ENTRANCE



**SECTION X-X THRU MAILBOX TURNOUT
ALSO APPLIES TO MAILBOX TURNOUTS COMBINED WITH
EX EARTH, AGGREGATE, OR HMA PE & FE**

(DETAIL APPLIES WHEN M.B. TURNOUT DOES NOT EXIST.
IF EXISTING, TREAT SAME AS ENTRANCE.)



**SECTION X-X THRU MAILBOX TURNOUT
COMBINED WITH EX HMA CONC & PC CONC PE & CE**

(DETAIL APPLIES WHEN M.B. TURNOUT DOES NOT EXIST.
IF EXISTING, TREAT SAME AS ENTRANCE.)

- NOTE 1 IF MORE THAN ONE MAILBOX IS PRESENT, DIMENSION FROM CENTER OF END MAILBOX.
- NOTE 2 FOR ENTRANCE LAYOUT DIMENSIONS AND SECTIONS A-A & E-E REFER TO THE SCHEDULES IN THE PLANS.
- NOTE 3 BOTH LT OR RT OFFSETS FOR MAILBOX SHOWN USE OFFSET DIMENSION PER SCHEDULE AND REFER TO LAYOUT SHOWN ON THE PLAN.

ALL DIMENSIONS ARE IN INCHES (MILLIMETERS)
UNLESS OTHERWISE SHOWN.

FILE NAME =	USER NAME = sparksgw	DESIGNED -	REVISED - 2/19/03 JCN
ENT PPP.DGN	et:\pw\work\p\dot\sparksgw\10387531\0672\h01-sht-details.dgn	DRAWN - CADD	REVISED - 4/01/04 JCN
	PLOT SCALE = 40.0000' / in.	CHECKED - JCN	REVISED -
	PLOT DATE = Apr-18-2014 09:50:06AM	DATE - FEBRUARY 23, 1999	REVISED -

**STATE OF ILLINOIS
DEPARTMENT OF TRANSPORTATION**

**DIST. 6 DETAILS FOR RURAL/URBAN ENT., MAILBOX
TURNOUT & SIDEROADS W/O CONC. GUTTER (3P-PROJ.)**

SCALE: SHEET 1 OF 3 SHEETS STA. TO STA.

F.A.P. RTE.	SECTION	COUNTY	TOTAL SHEETS	SHEET NO.
..	.	.	12	12
CONTRACT NO. 72H01				