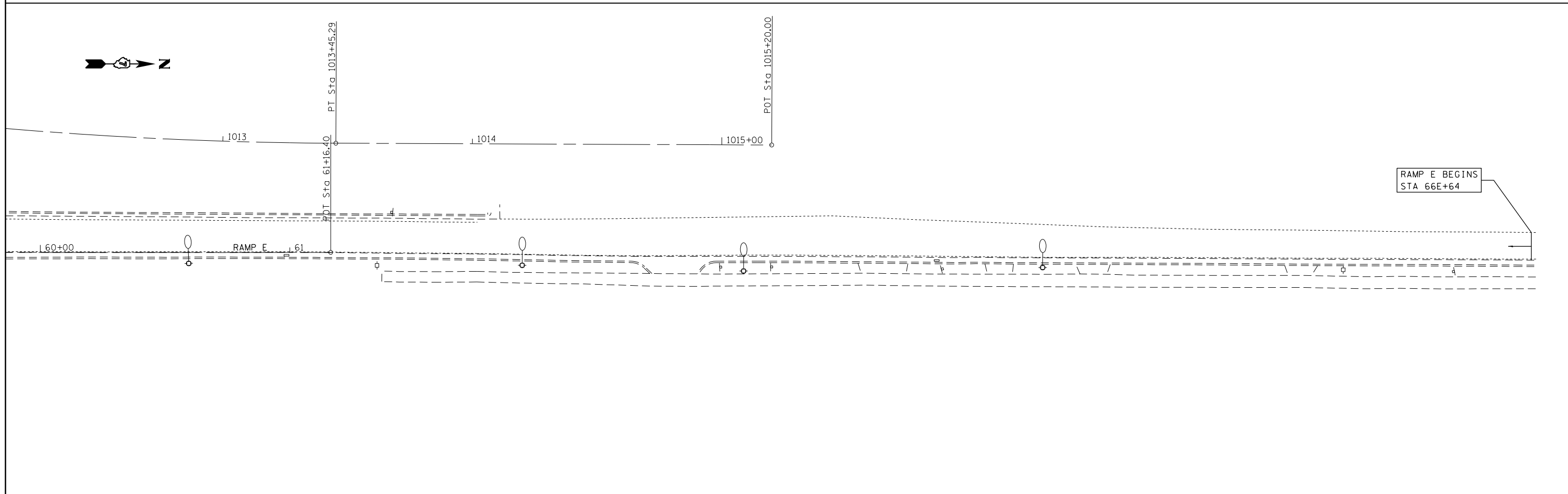




EXIST. CURVE E12
 PI STA. = 54+57.14
 Δ = 49° 11' 25" (RT)
 D = 13° 19' 25"
 R = 430.03'
 T = 196.84'
 L = 369.20'
 E = 42.91'
 e = -----
 T.R. = -----
 S.E. RUN = -----
 P.C. STA. = 52+60.30
 P.T. STA. = 56+29.50

EXIST. CURVE E13
 PI STA. = 57+09.02
 Δ = 13° 08' 53" (RT)
 D = 8° 18' 13"
 R = 690.01'
 T = 79.52'
 L = 158.34'
 E = 4.57'
 e = -----
 T.R. = -----
 S.E. RUN = -----
 P.C. STA. = 56+29.50
 P.T. STA. = 57+87.84



RAMP E BEGINS
 STA 66E+64

| | | | | | | | | | | | |
|--|-----------------------------|------------|-----------|---|---------------|----|-------------|-------------------|--------|--------------|---------------------------|
| FILE NAME = c:\pwwork\pwwork\steffenmk\d0187107\074475-SHT-plan.dgn | USER NAME = steffenmk | DESIGNED - | REVISED - | STATE OF ILLINOIS DEPARTMENT OF TRANSPORTATION | RAMP E | | F.A.P. RTE. | SECTION | COUNTY | TOTAL SHEETS | SHEET NO. |
| | PLOT SCALE = 40.0000' / in. | CHECKED - | REVISED - | | | | 712 | 128RS-4,148KIRS-2 | Macon | 73 | 23 |
| D774498-SHT-plan 23 | PLOT DATE = 4/4/2014 | DATE - | REVISED - | SCALE: | SHEET | OF | SHEETS | STA. | TO | STA. | ILLINOIS FED. AID PROJECT |
| CONTRACT NO. 74475 | | | | | | | | | | | |