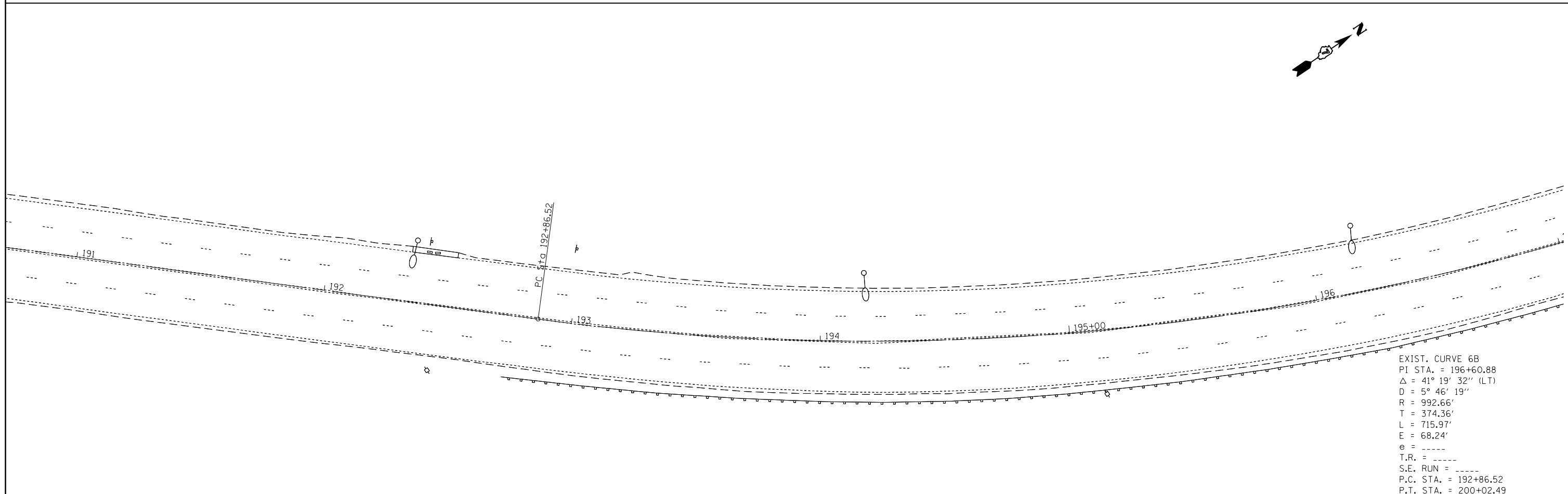


EXIST. CURVE 5
 PI STA. = 187+71.37
 Δ = 36° 44' 50" (RT)
 D = 8° 02' 28"
 R = 712.55'
 T = 236.67'
 L = 457.00'
 E = 38.28'
 e = ----
 T.R. = ----
 S.E. RUN = ----
 P.C. STA. = 185+34.70
 P.T. STA. = 189+91.70



EXIST. CURVE 6B
 PI STA. = 196+60.88
 Δ = 41° 19' 32" (LT)
 D = 5° 46' 19"
 R = 992.66'
 T = 374.36'
 L = 715.97'
 E = 68.24'
 e = ----
 T.R. = ----
 S.E. RUN = ----
 P.C. STA. = 192+86.52
 P.T. STA. = 200+02.49

FILE NAME =	USER NAME = steffenmk	DESIGNED -	REVISED -	STATE OF ILLINOIS DEPARTMENT OF TRANSPORTATION	PLAN SHEET			F.A.P. RTE.	SECTION	COUNTY	TOTAL SHEETS	SHEET NO.
ei:\pw\work\p\idot\stevfenmk\d0187107\074475-SHT-plan.dgn		DRAWN -	REVISED -		712	128RS-4,148KRS-2	Macon	73	32			
	PLOT SCALE = 40.0000' / in.	CHECKED -	REVISED -		SCALE: SHEET OF SHEETS STA. TO STA.			CONTRACT NO. 74475				
D774498-SHT-plan 32	PLOT DATE = 4/4/2014	DATE -	REVISED -		ILLINOIS FED. AID PROJECT							