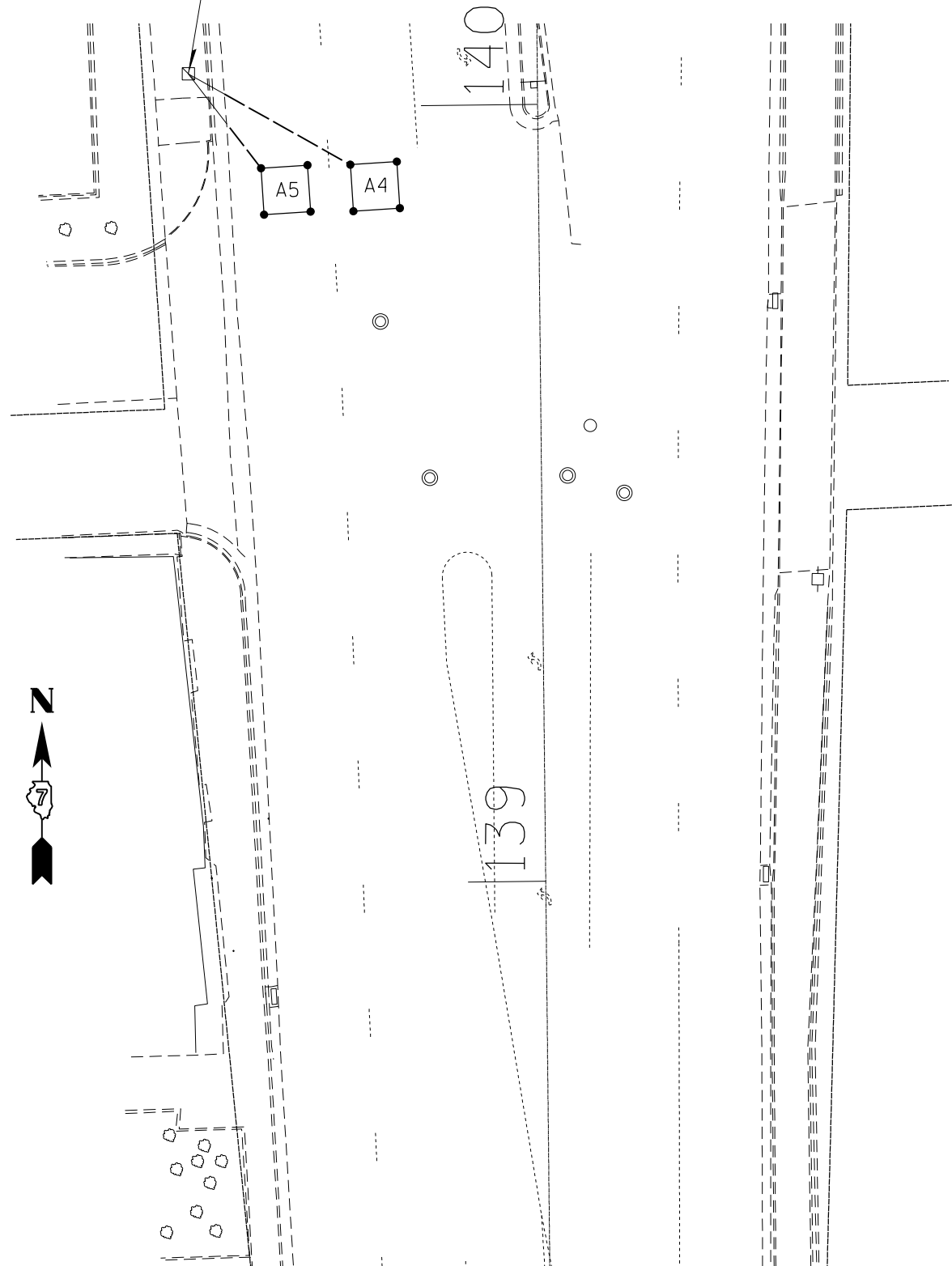
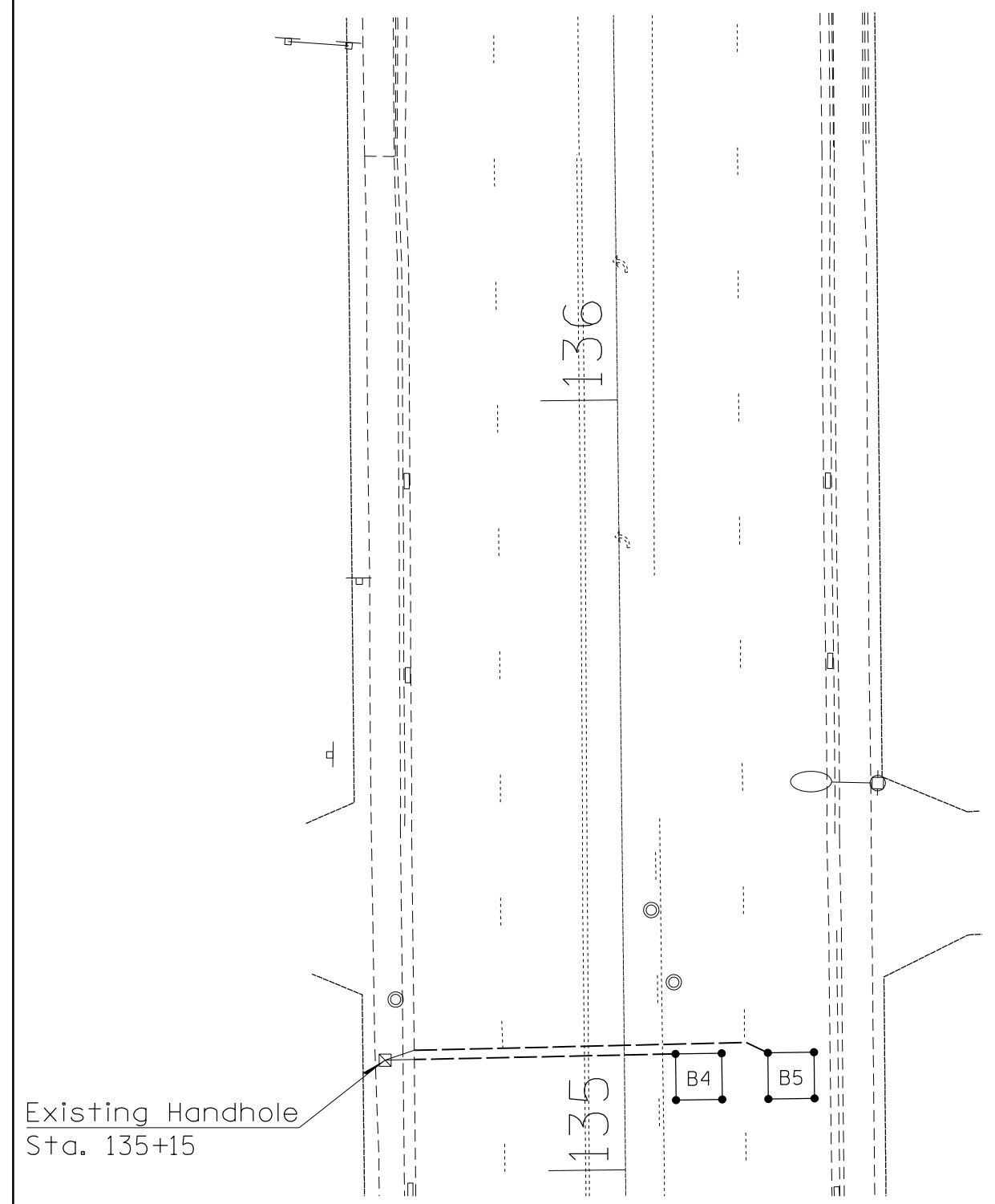


Existing Handhole
Sta. 140+04



Match Line
See Traffic Signal Sheet No. 17
DETECTOR LOOPS-NORTH

Match Line
See Traffic Signal Sheet No. 17



Existing Handhole
Sta. 135+15

DETECTOR LOOPS-SOUTH

FILE NAME = c:\pw_work\pwidot\steffenmk\d0187107\074475-TS-sht.dgn	USER NAME = steffenmk	DESIGNED -	REVISED -
		DRAWN -	REVISED -
		CHECKED -	REVISED -
		DATE -	REVISED -
Default	PLOT SCALE = 20.0000' / in. PLOT DATE = 4/4/2014		

STATE OF ILLINOIS
DEPARTMENT OF TRANSPORTATION

TRAFFIC SIGNAL PLANS	
PRAIRIE STREET DETECTOR LOOPS N & S	
SCALE:	SHEET 18 OF 18 SHEETS STA. TO STA.

F.A.P. RTE.	SECTION	COUNTY	TOTAL SHEETS	SHEET NO.
712	128RS-4,148K/RS-2	Macon	73	70
ILLINOIS FED. AID PROJECT			CONTRACT NO. 74475	