

STATE OF ILLINOIS
 DEPARTMENT OF TRANSPORTATION
 DIVISION OF HIGHWAYS

**PROPOSED
 HIGHWAY PLANS**

F.A.P. ROUTE 320 (IL. RTE. 121)
 SECTION D7 HMA RESURF 2015-4

RESURFACING
 MOULTRIE COUNTY

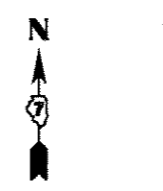
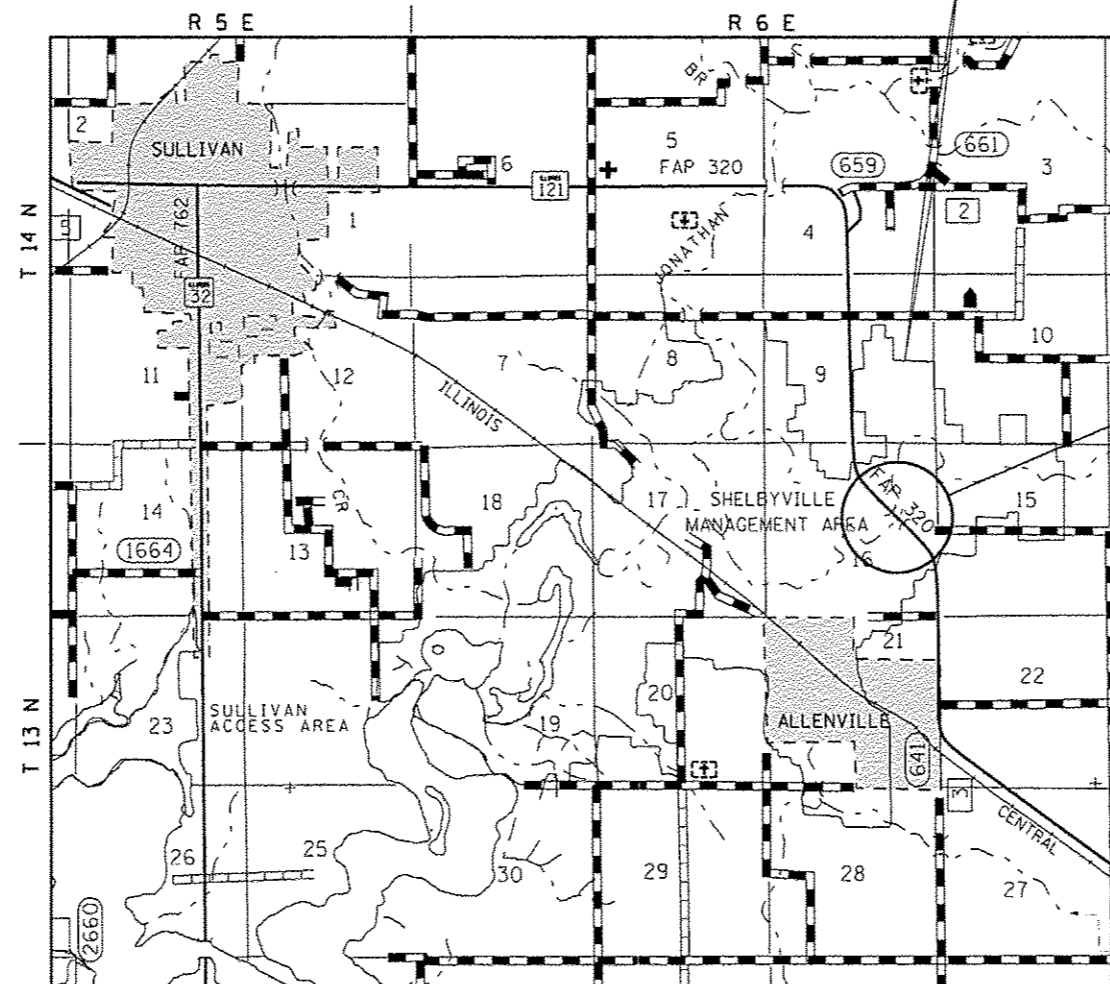
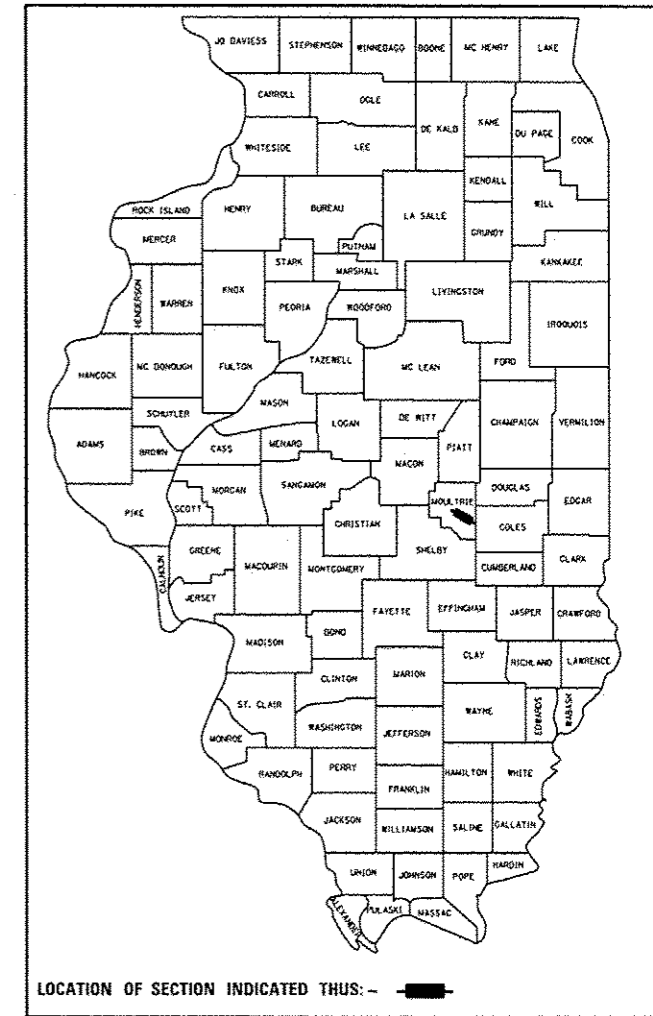
C-97-070-14

FOR INDEX OF SHEETS, SEE SHEET NO. 2

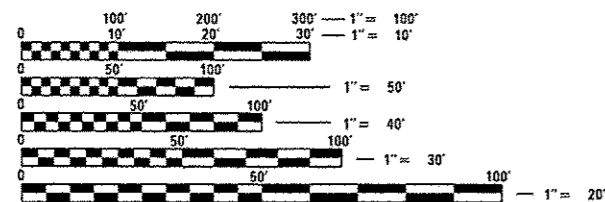
ADT=4,750 (2011)

F.A.P. RTE.	SECTION	COUNTY	TOTAL SHEETS	SHEET NO.
320	D7 HMA RESURF 2015-4	MOULTRIE	17	1
		ILLINOIS	CONTRACT NO. 74670	

D-97-030-14



PROJECT LOCATION



FULL SIZE PLANS HAVE BEEN PREPARED USING STANDARD ENGINEERING SCALES. REDUCED SIZED PLANS WILL NOT CONFORM TO STANDARD SCALES. IN MAKING MEASUREMENTS ON REDUCED PLANS, THE ABOVE SCALES MAY BE USED.

J.U.L.I.E.
 JOINT UTILITY LOCATION INFORMATION FOR EXCAVATION
 1-800-892-0123
 OR 811

PROJECT ENGINEER: TOM RONAN
 PROJECT MANAGER: TOM RONAN
 PHONE: (217)-342-8320
 CONTRACT NO. 74670

GROSS LENGTH = 6,143 FT. = 1.16 MILES
 NET LENGTH = 5,647 FT. = 1.07 MILES

STATE OF ILLINOIS
 DEPARTMENT OF TRANSPORTATION
 DIVISION OF HIGHWAYS

SUBMITTED April 01 20 14
Roger L. Drishul, P.E.
 DEPUTY DIRECTOR OF HIGHWAYS, REGION ENGINEER

May 9 20 14
John D. Baranzello, P.E.
 ENGINEER OF DESIGN AND ENVIRONMENT

May 9 20 14
Omer Osman, P.E.
 DIRECTOR OF HIGHWAYS, CHIEF ENGINEER

PRINTED BY THE AUTHORITY
 OF THE STATE OF ILLINOIS