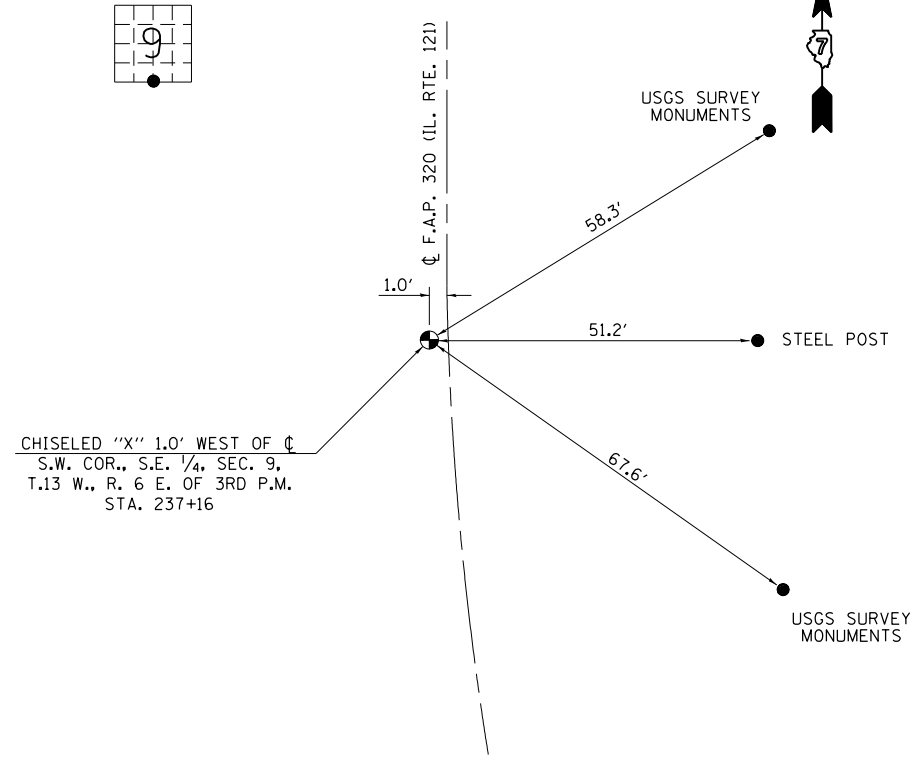


TIES FOR SECTION CORNER

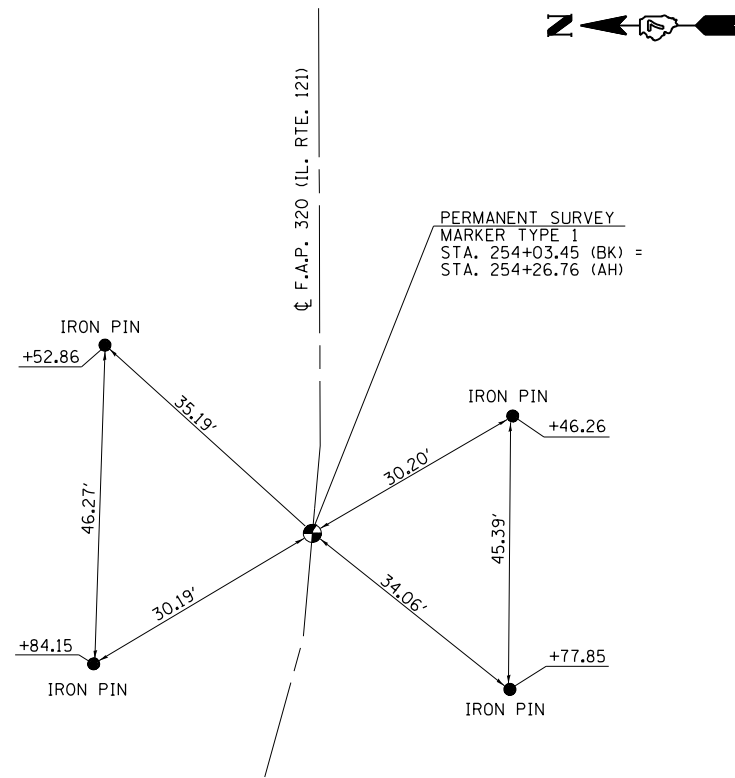
STA. 237+16
1.0' WEST OF CL



NOTE: NOT TO SCALE

TIES FOR P.T. STATION

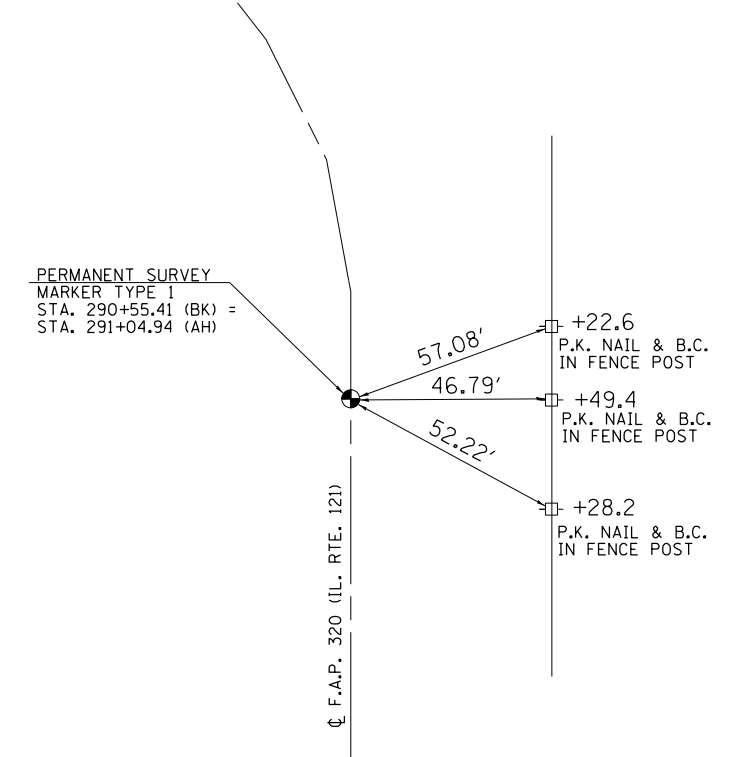
STA. 254+03.45 (BK) =
STA. 254+26.76 (AH)



NOTE: NOT TO SCALE

TIES FOR P.T. STATION

STA. 290+55.41 (BK) =
STA. 291+04.94 (AH)



NOTE: NOT TO SCALE

SURVEY MONUMENT SCHEDULE

STATION	O/S	TYPE OF POINT	DESCRIPTION	SURVEY MARKER VAULT	PROTECTING OR RESETTING SURVEY MARKERS
				EACH	EACH
236+34.19	0	PC	BRASS IDOT DISK IN VAULT	1	1
237+16.00	1.0' RT.	SECTION CORNER	BRASS IDOT DISK IN VAULT	1	1
245+18.82	0	POC	BRASS IDOT DISK IN VAULT	1	1
254+03.45 (BK) = 254+26.76 (AH)	0	PT/STA. EQ.	BRASS IDOT DISK IN VAULT	1	1
272+79.36	0	PC	BRASS IDOT DISK IN VAULT	1	1
281+67.38	0	POC	BRASS IDOT DISK IN VAULT	1	1
290+55.41 (BK) = 291+04.94 (AH)	0	PT/STA. EQ.	BRASS IDOT DISK IN VAULT	1	1
			TOTALS	7	7

FILE NAME =	USER NAME = steffenmk	DESIGNED -	REVISED -
ci:\pw\work\p\dot\stefjenmk\d0384918\074670-sh-t-sch.dgn		DRAWN -	REVISED -
Default	PLOT SCALE = 100.0000' / in.	CHECKED -	REVISED -
	PLOT DATE = 4/1/2014	DATE -	REVISED -

STATE OF ILLINOIS
DEPARTMENT OF TRANSPORTATION

TIE POINTS AND
SURVEY MONUMENT SCHEDULE

SCALE: N/A SHEET 1 OF 1 SHEETS STA. TO STA.

F.A.P. RTE.	SECTION	COUNTY	TOTAL SHEETS	SHEET NO.
320	D7 HMA RESURF 2015-4	MOULTRIE	17	7
ILLINOIS FED. AID PROJECT			CONTRACT NO. 74670	