

STATE OF ILLINOIS  
DEPARTMENT OF TRANSPORTATION  
DIVISION OF HIGHWAYS

**PROPOSED  
HIGHWAY PLANS**

F.A.P. ROUTE 320 (IL. RTE. 121)  
SECTION D7 HMA RESURF 2015-4

FOR INDEX OF SHEETS, SEE SHEET NO. 2

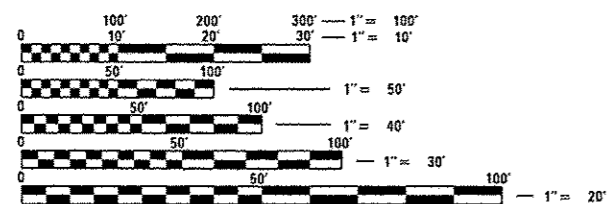
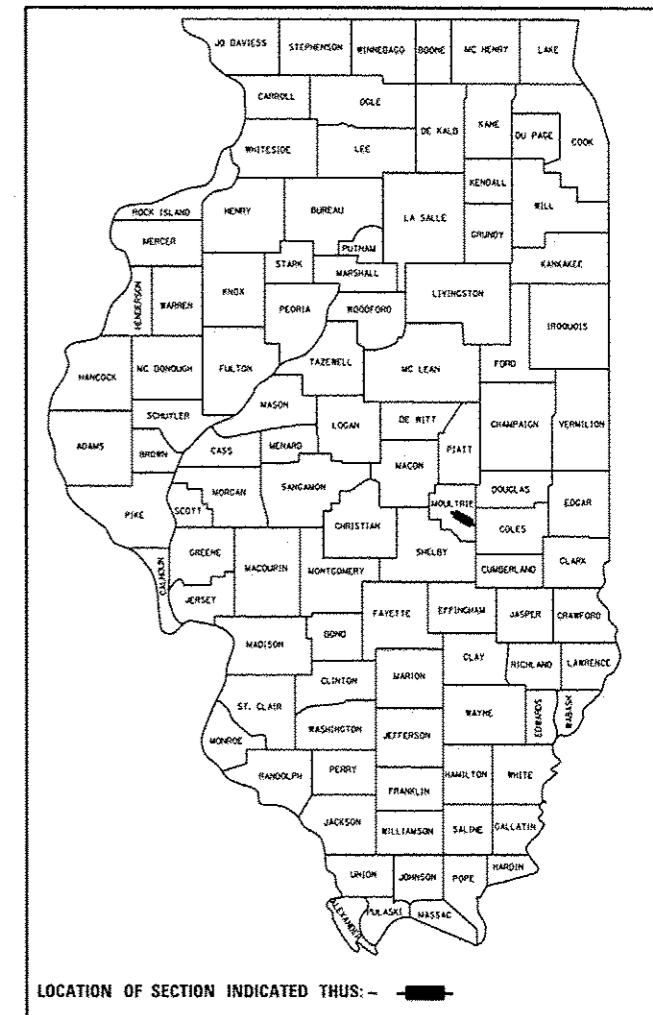
ADT=4,750 (2011)

RESURFACING  
MOULTRIE COUNTY

C-97-070-14

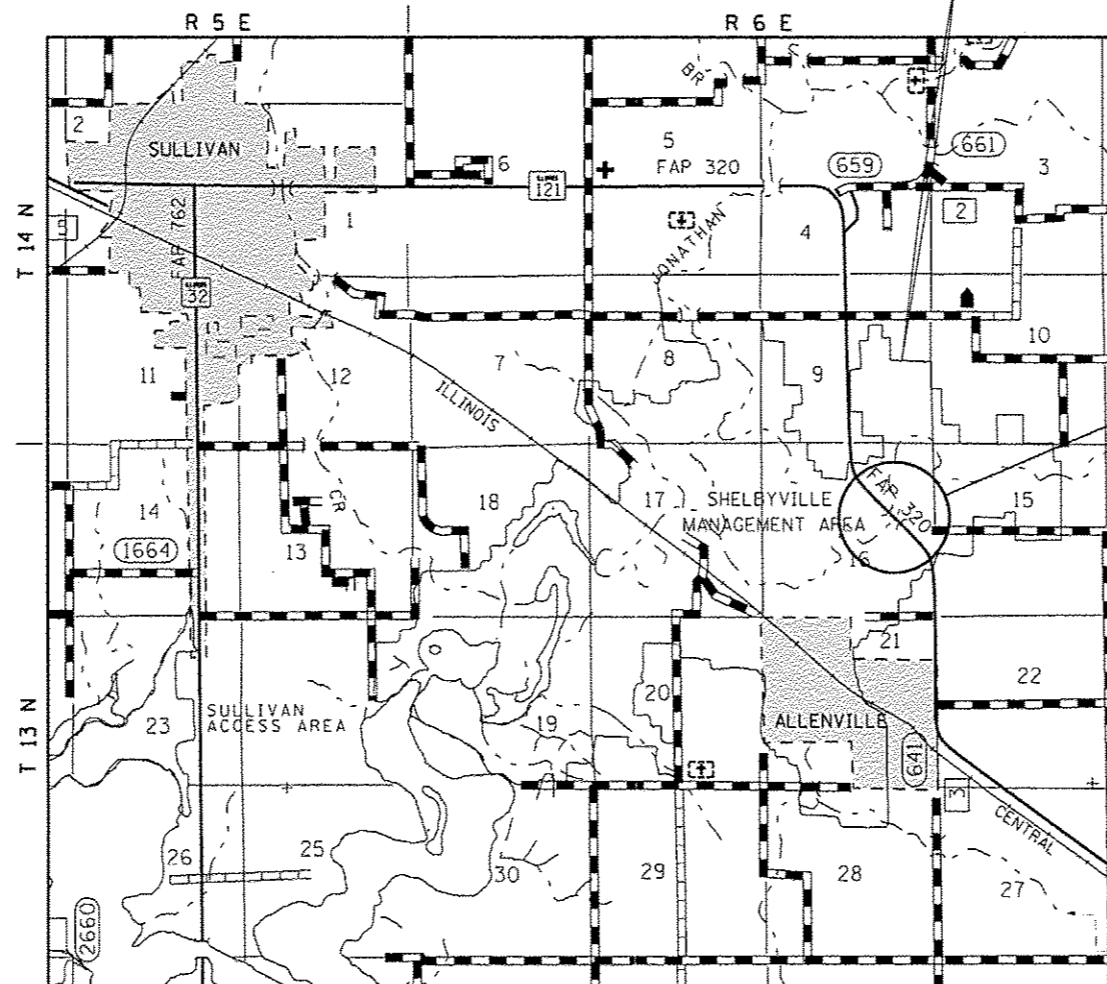
F.A.P. RTE.	SECTION	COUNTY	TOTAL SHEETS	SHEET NO.
320	D7 HMA RESURF 2015-4	MOULTRIE	17	1
		ILLINOIS	CONTRACT NO. 74670	

D-97-030-14



FULL SIZE PLANS HAVE BEEN PREPARED USING STANDARD ENGINEERING SCALES. REDUCED SIZED PLANS WILL NOT CONFORM TO STANDARD SCALES. IN MAKING MEASUREMENTS ON REDUCED PLANS, THE ABOVE SCALES MAY BE USED.

J.U.L.I.E.  
JOINT UTILITY LOCATION INFORMATION FOR EXCAVATION  
1-800-892-0123  
OR 811



PROJECT LOCATION

PROJECT ENGINEER: TOM RONAN  
PROJECT MANAGER: TOM RONAN  
PHONE: (217)-342-8320  
CONTRACT NO. 74670

GROSS LENGTH = 6,143 FT. = 1.16 MILES  
NET LENGTH = 5,647 FT. = 1.07 MILES

STATE OF ILLINOIS  
DEPARTMENT OF TRANSPORTATION  
DIVISION OF HIGHWAYS

SUBMITTED April 01 20 14  
Roger L. Drishul  
DEPUTY DIRECTOR OF HIGHWAYS, REGION ENGINEER

May 9 20 14  
John D. Baranzello, P.E.  
ENGINEER OF DESIGN AND ENVIRONMENT

May 9 20 14  
Omer Osman, P.E.  
DIRECTOR OF HIGHWAYS, CHIEF ENGINEER

PRINTED BY THE AUTHORITY  
OF THE STATE OF ILLINOIS

## INDEX OF SHEETS

SHEET NO.	ITEM
1	COVER SHEET
2	INDEX OF SHEETS, HIGHWAY STANDARDS, & GENERAL NOTES
3	SUMMARY OF QUANTITIES
4-5	TYPICAL SECTIONS
6	SCHEDULE OF QUANTITIES
7	SURVEY MONUMENT SCHEDULE & ALIGNMENT TIES
8	ENTRANCE SCHEDULE & DETAILS
9-11	PLAN SHEETS
12	MILLING DETAILS
13	SURVEY VAULT DETAILS
14-17	PAVEMENT MARKING DETAILS

THE FOLLOWING STANDARDS ARE A PART OF THESE PLANS AND ARE INCLUDED AFTER SHEET NO. 17 :

STD. NO.	DESCRIPTION
000001-06	STANDARD SYMBOLS, ABBREVIATIONS AND PATTERNS
001006	DECIMAL OF AN INCH & FOOT
406201-01	MAILBOX TURNOUT
442201-03	CLASS C & D PATCHES
667101-02	PERMANENT SURVEY MARKERS
701001-02	OFF-ROAD OPERATIONS, 2L, 2W MORE THAN 15' AWAY
701006-05	OFF-ROAD OPERATIONS, 2L, 2W 15' TO 24" FROM PAVEMENT EDGE
701201-04	LANE CLOSURE, 2L, 2W, DAY ONLY
701301-04	LANE CLOSURE, 2L, 2W, SHORT TIME OPERATIONS
701311-03	LANE CLOSURE, 2L, 2W, MOVING OPERATION - DAY ONLY
701901-03	TRAFFIC CONTROL DEVICES
780001-04	TYPICAL PAVEMENT MARKINGS
781001-03	TYPICAL APPLICATIONS RAISED REFLECTIVE PAVEMENT MARKERS

## GENERAL NOTES

THIS SECTION SHALL BE CONSTRUCTED IN ACCORDANCE WITH THE PLANS; THE "STANDARD SPECIFICATIONS FOR ROAD AND BRIDGE CONSTRUCTION" ADOPTED JANUARY 1, 2012; AND THE SPECIAL PROVISIONS INCLUDED IN THE PROPOSAL.

THIS PROJECT IS LOCATED ON ILLINOIS ROUTE 121 IN MOULTRIE COUNTY. THE PROJECT STARTS APPROXIMATELY 4 MILES EAST OF SULLIVAN AND EXTENDS EAST FOR APPROXIMATELY 1.2 MILES. THE WORK INCLUDED IN SECTION 07 HMA RESURF 2015-4 CONSISTS OF PAVEMENT PATCHING, MILLING, HOT-MIX ASPHALT RESURFACING, PAVEMENT MARKING, AND ANY OTHER WORK NECESSARY TO COMPLETE THE SECTION.

PAVEMENT MARKING SHALL BE APPLIED IN ACCORDANCE WITH SECTION 780 OF THE STANDARD SPECIFICATIONS. SHORT TERM PAVEMENT MARKING SHALL BE APPLIED TO THE MILLED SURFACE. BITUMINOUS MATERIALS (PRIME COAT), AND HOT-MIX ASPHALT SURFACE COURSE AS SPECIFIED IN SECTION 703 OF THE STANDARD SPECIFICATIONS. TEMPORARY TAPE SHALL BE USED ON THE SURFACE COURSE AND PAINT SHALL BE USED ON THE MILLED SURFACE.

THE TOTAL QUANTITY OF PAINT PAVEMENT MARKING-LINE 4" CONSISTS OF 12,214 FEET OF WHITE AND 1,536 FEET OF YELLOW.

THE TOTAL QUANTITY OF RAISED REFLECTIVE PAVEMENT MARKERS CONSISTS OF 73 TWO-WAY AMBER MARKERS.

THE PAY ITEM TEMPORARY RAMP HAS BEEN INCLUDED FOR THE CONSTRUCTION OF TEMPORARY RAMPS IN ACCORDANCE WITH ARTICLE 406.08 OF THE STANDARD SPECIFICATIONS. THE COST SHALL INCLUDE BOTH THE INSTALLATION AND THE REMOVAL OF THE TEMPORARY RAMPS.

THE RESIDENT ENGINEER SHALL BE THE SOLE JUDGE CONCERNING THE CURING TIME FOR ALL HOT-MIX ASPHALT.

THE CONTRACTOR SHALL PROVIDE INTERNET ACCESSIBILITY TO THE HOT-MIX ASPHALT PLANT QUALITY CONTROL LAB SO THAT HOT-MIX ASPHALT PLANT REPORTS CAN BE E-MAILED TO THE DISTRICT HEADQUARTERS. THIS WORK SHALL BE INCLUDED IN THE COST OF THE HOT-MIX ASPHALT SURFACE COURSE.

THE ACTUAL LOCATIONS OF PAVEMENT PATCHING AND FINAL QUANTITIES SHALL BE DETERMINED BY THE ENGINEER IN THE FIELD.

A UNIFORMLY STRAIGHT SAW CUT SHALL BE MADE AT LOCATIONS WHERE PROPOSED NEW CONSTRUCTION WILL ABUT EXISTING HOT-MIX ASPHALT SURFACES. THE SAW CUT SHALL BE MADE FULL DEPTH THROUGH THE EXISTING SURFACE. THIS WORK WILL BE CONSIDERED INCLUDED IN THE COST OF THE CONTRACT ITEMS INVOLVED AND NO EXTRA COMPENSATION WILL BE ALLOWED.

THE FOLLOWING MIXTURE REQUIREMENTS ARE APPLICABLE FOR THIS PROJECT:

MIXTURE USE: SURFACE COURSE (1 1/2")  
 APPLICATION: HOT-MIX ASPHALT SURFACE COURSE, MIX "D", N70  
 PG GRADE: PG 64-22  
 DESIGN AIR VOIDS: 4.0% @ NDESIGN = 70  
 MIXTURE COMPOSITION: IL-9.5  
 FRICTION AGGREGATE: MIXTURE D

MIXTURE USE: CLASS D PAVEMENT PATCHING  
 APPLICATION: HOT-MIX ASPHALT BINDER COURSE, IL-19.0, N70  
 PG GRADE: PG 64-22  
 DESIGN AIR VOIDS: 4.0% @ NDESIGN = 70  
 MIXTURE COMPOSITION: IL-19.0  
 FRICTION AGGREGATE: N/A

MIXTURE USE: INCIDENTAL HMA SURFACING  
 APPLICATION: HOT-MIX ASPHALT SURFACE COURSE, MIX "C", N70  
 PG GRADE: PG 64-22  
 DESIGN AIR VOIDS: 4.0% @ NDESIGN = 70  
 MIXTURE COMPOSITION: IL-9.5  
 FRICTION AGGREGATE: MIXTURE C

THE FOLLOWING RATES OF APPLICATION HAVE BEEN USED IN THE CALCULATING PLAN QUANTITIES:

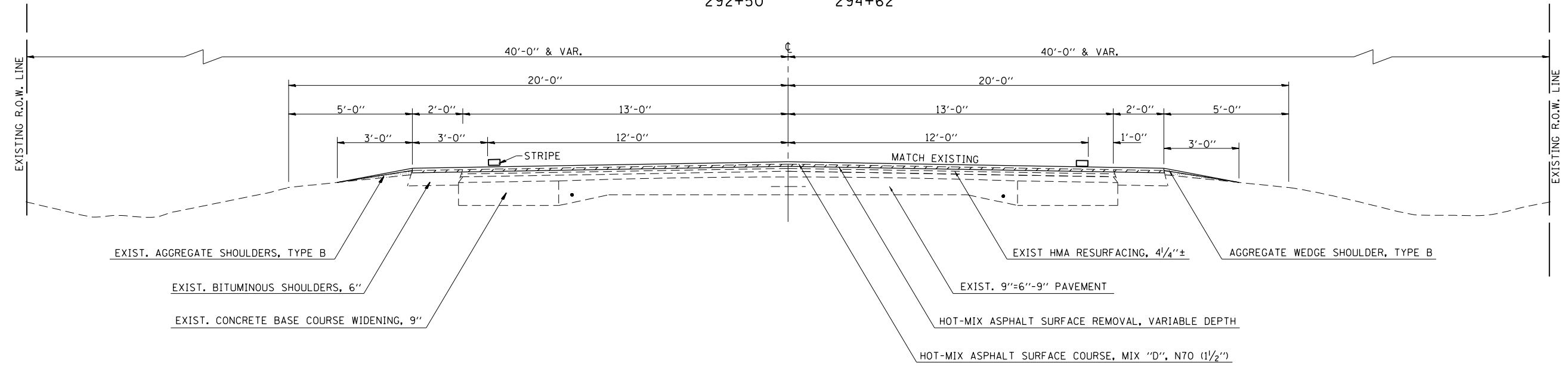
BITUMINOUS MATERIALS (PRIME COAT)	0.05 LBS/SQ FT
HOT-MIX ASPHALT	112 LBS/SQ YD/INCH
GRANULAR MATERIAL	2.05 TONS/CU YD

FILE NAME =	USER NAME = staffanmk	DESIGNED -	REVISED -	<b>STATE OF ILLINOIS DEPARTMENT OF TRANSPORTATION</b>	<b>INDEX OF SHEETS AND GENERAL NOTES</b>				F.A.P. RTE.	SECTION	COUNTY	TOTAL SHEETS	SHEET NO.
or\pvc\work\pvc\dot\staffanmk\20284918\07	4670-ght-index.dgn	DRAWN -	REVISED -		320	07 HMA RESURF 2015-4	MOULTRIE	17	2				
PLOT SCALE = 1/8" = 1' IN.	CHECKED -	REVISED -			CONTRACT NO. 74670								
Default	PLOT DATE = 4/12/2014	DATE -	REVISED -		SCALE: N/A	SHEET 1	OF 1	SHEETS	STA.	TO STA.	ILLINOIS FED. AID PROJECT		



**TYPICAL CROSS SECTION**

STATION	TO	STATION
197+56		235+00
292+50		294+62

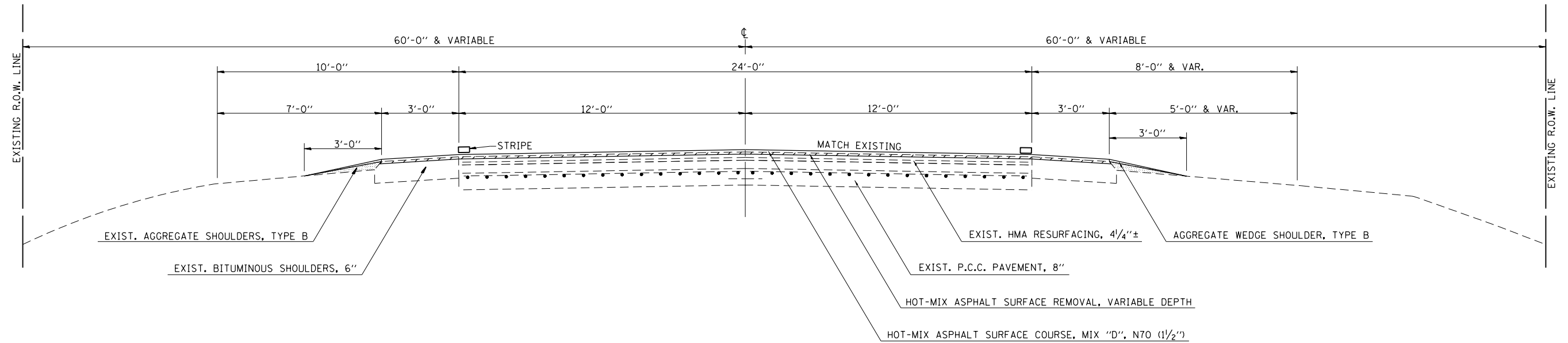


 HOT-MIX ASPHALT SURFACE REMOVAL, VARIABLE DEPTH

NOTE: NOT TO SCALE

**TYPICAL CROSS SECTION**

STATION	TO	STATION
235+00		236+00
261+70		262+72.3
291+62		292+50



 HOT-MIX ASPHALT SURFACE REMOVAL, VARIABLE DEPTH

NOTE: NOT TO SCALE

FILE NAME =	USER NAME = steffenmk	DESIGNED -	REVISED -
ci:\pw\work\p\idot\stevfenmk\d0384918\074670-sh-typical.dgn		DRAWN -	REVISED -
Default	PLOT SCALE = 100.0000' / 1in.	CHECKED -	REVISED -
	PLOT DATE = 4/1/2014	DATE -	REVISED -

**STATE OF ILLINOIS  
DEPARTMENT OF TRANSPORTATION**

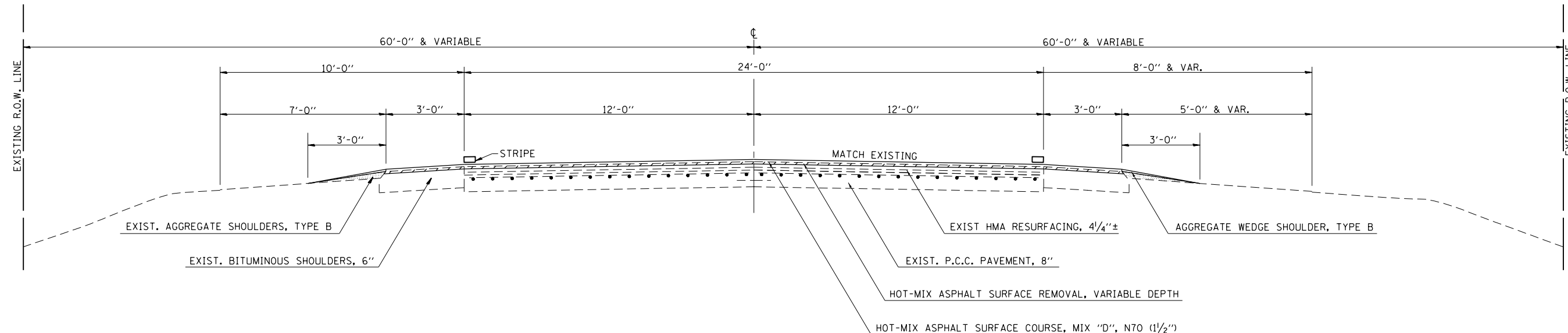
**TYPICAL CROSS SECTIONS**

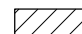
SCALE: N/A SHEET 1 OF 2 SHEETS STA. TO STA.

F.A.P. RTE.	SECTION	COUNTY	TOTAL SHEETS	SHEET NO.
320	D7 HMA RESURF 2015-4	MOULTRIE	17	4
CONTRACT NO. 74670			ILLINOIS FED. AID PROJECT	

**PROPOSED TYPICAL CROSS SECTION**

STATION	TO	STATION
236+00		254+03.45 (BK.)
254+26.76 (AH.)		261+70
262+72.3		290+55.41 (BK.)
291+04.94 (AH.)		291+62



 HOT-MIX ASPHALT SURFACE REMOVAL, VARIABLE DEPTH

NOTE: NOT TO SCALE

FILE NAME =	USER NAME = steffenmk	DESIGNED -	REVISED -
c:\pw\work\p\dot\stef\mk\d0384918\074670-sh-typical.dgn		DRAWN -	REVISED -
Default	PLOT SCALE = 100.0000' / 1in.	CHECKED -	REVISED -
	PLOT DATE = 4/1/2014	DATE -	REVISED -

**STATE OF ILLINOIS  
DEPARTMENT OF TRANSPORTATION**

**TYPICAL CROSS SECTIONS**

SCALE: N/A SHEET 2 OF 2 SHEETS STA. TO STA.

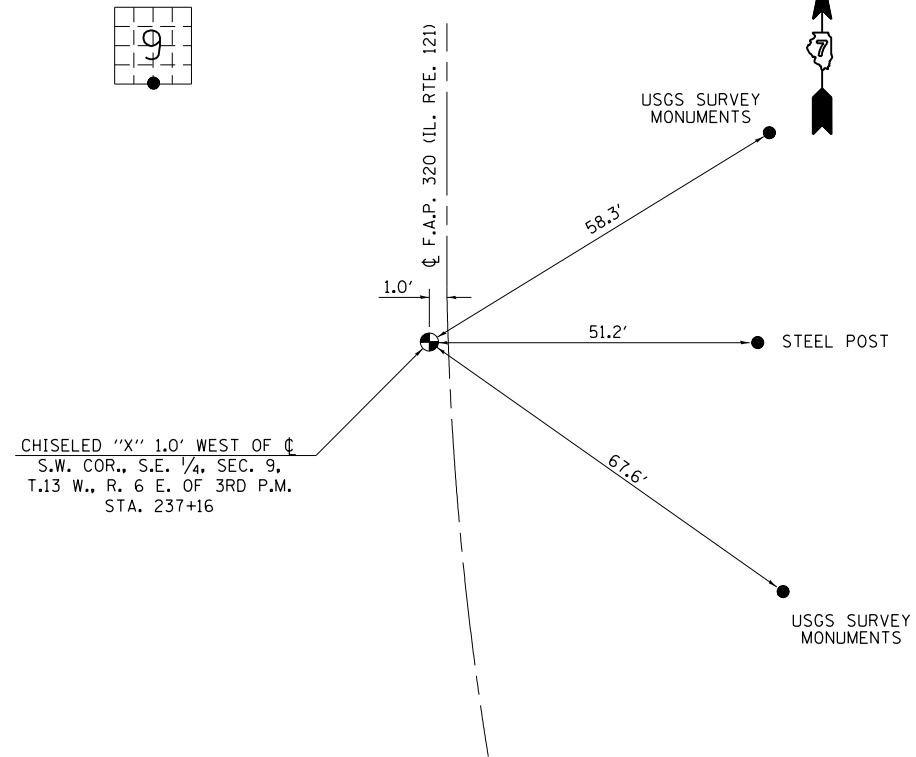
F.A.P. RTE.	SECTION	COUNTY	TOTAL SHEETS	SHEET NO.
320	D7 HMA RESURF 2015-4	MOULTRIE	17	5
CONTRACT NO. 74670			ILLINOIS FED. AID PROJECT	

RESURFACING SCHEDULE	LENGTH	WIDTH OF RESURFACING	AREA	HOT-MIX ASPHALT SURFACE REMOVAL ( VARIABLE DEPTH)	HOT-MIX ASPHALT SURFACE REMOVAL - BUTT JOINT	BITUMINOUS MATERIALS ( PRIME COAT)	HOT-MIX ASPHALT SURFACE COURSE, MIX "D", N70	AGGREGATE WEDGE SHOULDER, TYPE B	TEMPORARY RAMP
STATION TO STATION	FOOT	FOOT	SQ YD	SQ YD	SQ YD	POUND	TON	TON	SQ YD
232+46.00 TO 232+76.00	30	30	100		100	45	8	2	17
232+76.00 TO 254+03.45	2127.45	30	7092	7092		3191	596	115	
254+03.45 ( BK ) = 254+26.76 ( AH)		STATION EQUATION							
254+26.76 TO 262+42.30	816	30	2718	2718		1223	228	46	
262+42.30 TO 262+72.30	30	30	100		100	45	8	2	17
262+72.30 TO 267+68.40	496	BRIDGE OMISSION							
267+68.40 TO 267+98.40	30	30	100		100	45	8	2	17
267+98.40 TO 290+55.41	2257	30	7523	7523		3386	632	123	
290+55.41 ( BK ) = 291+04.94 ( AH)		STATION EQUATION							
291+04.94 TO 294+32.00	327	30	1090	1090		491	92	19	
294+32.00 TO 294+62.00	30	30	100		100	45	8	2	17
<b>PROJECT TOTALS</b>				18424	400	8471	1581	310	68

PAVEMENT MARKING SCHEDULE	LENGTH	PAINT PAVEMENT MARKING - LINE 4"	RASIED REFLECTIVE PAVEMENT MARKER	SHORT-TERM PAVEMENT MARKING	WORK ZONE PAVEMENT MARKING REMOVAL
STATION TO STATION	FOOT	FOOT	EACH	FOOT	SQ FT
232+46 TO 232+76	30.00	68	1	8	1
232+76 TO 254+03.45	2127.45	4787	27	424	70
254+03.45 ( BK ) = 254+26.76 ( AH)	STATION EQUATION				
254+26.76 TO 262+42.30	815.54	1835	10	160	26
262+42.30 TO 262+72.30	30.00	68	1	8	1
262+72.30 TO 267+68.40	496.10	1116	BRIDGE		
267+68.40 TO 267+98.40	30.00	68	1	8	1
267+98.40 TO 290+55.41	2257.01	5006	28	448	74
290+55.41 ( BK ) = 291+04.94 ( AH)	STATION EQUATION				
291+04.94 TO 294+32.00	327.06	736	4	64	11
294+32.00 TO 294+62.00	30.00	68	1	8	1
<b>PROJECT TOTALS</b>		13750	73	1128	115

TIES FOR SECTION CORNER

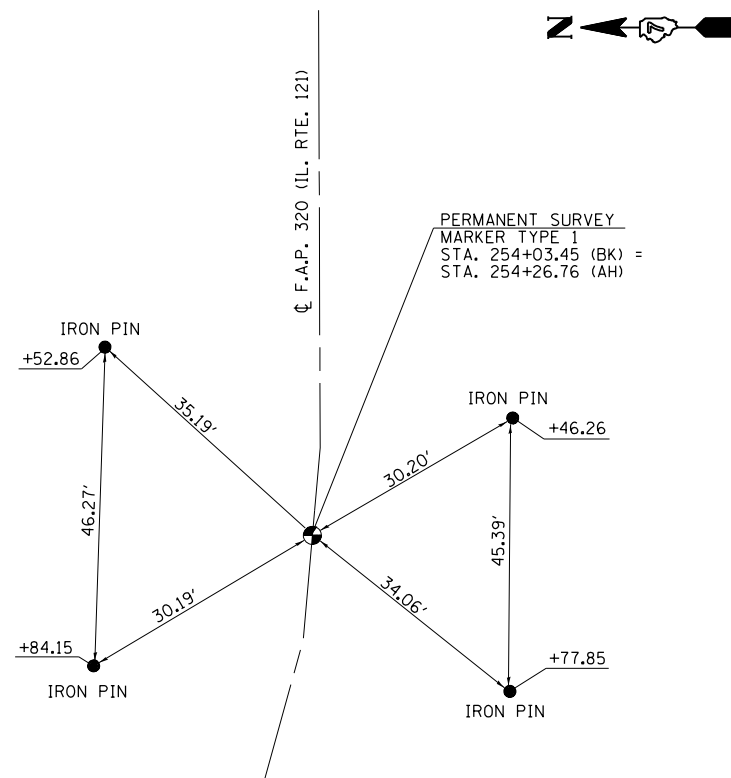
STA. 237+16  
1.0' WEST OF CL



NOTE: NOT TO SCALE

TIES FOR P.T. STATION

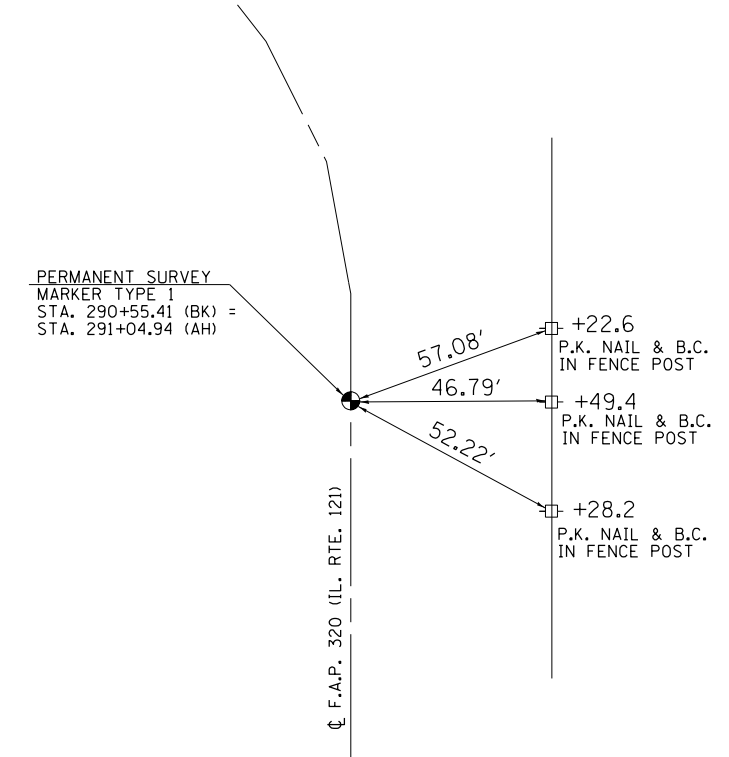
STA. 254+03.45 (BK) =  
STA. 254+26.76 (AH)



NOTE: NOT TO SCALE

TIES FOR P.T. STATION

STA. 290+55.41 (BK) =  
STA. 291+04.94 (AH)



NOTE: NOT TO SCALE

SURVEY MONUMENT SCHEDULE

STATION	O/S	TYPE OF POINT	DESCRIPTION	SURVEY MARKER VAULT	PROTECTING OR RESETTING SURVEY MARKERS
				EACH	EACH
236+34.19	0	PC	BRASS IDOT DISK IN VAULT	1	1
237+16.00	1.0' RT.	SECTION CORNER	BRASS IDOT DISK IN VAULT	1	1
245+18.82	0	POC	BRASS IDOT DISK IN VAULT	1	1
254+03.45 (BK) = 254+26.76 (AH)	0	PT/STA. EO.	BRASS IDOT DISK IN VAULT	1	1
272+79.36	0	PC	BRASS IDOT DISK IN VAULT	1	1
281+67.38	0	POC	BRASS IDOT DISK IN VAULT	1	1
290+55.41 (BK) = 291+04.94 (AH)	0	PT/STA. EO.	BRASS IDOT DISK IN VAULT	1	1
			TOTALS	7	7

FILE NAME =	USER NAME = steffenmk	DESIGNED -	REVISED -
ci:\pw\work\p\dot\steffenmk\d0384918\074670-sh-t-sch.dgn		DRAWN -	REVISED -
Default	PLOT SCALE = 100.0000' / in.	CHECKED -	REVISED -
	PLOT DATE = 4/1/2014	DATE -	REVISED -

STATE OF ILLINOIS  
DEPARTMENT OF TRANSPORTATION

TIE POINTS AND  
SURVEY MONUMENT SCHEDULE

SCALE: N/A SHEET 1 OF 1 SHEETS STA. TO STA.

F.A.P. RTE.	SECTION	COUNTY	TOTAL SHEETS	SHEET NO.
320	D7 HMA RESURF 2015-4	MOULTRIE	17	7
ILLINOIS FED. AID PROJECT			CONTRACT NO. 74670	

# RURAL ENTRANCE SCHEDULE AND MAILBOX TURNOUT DETAILS

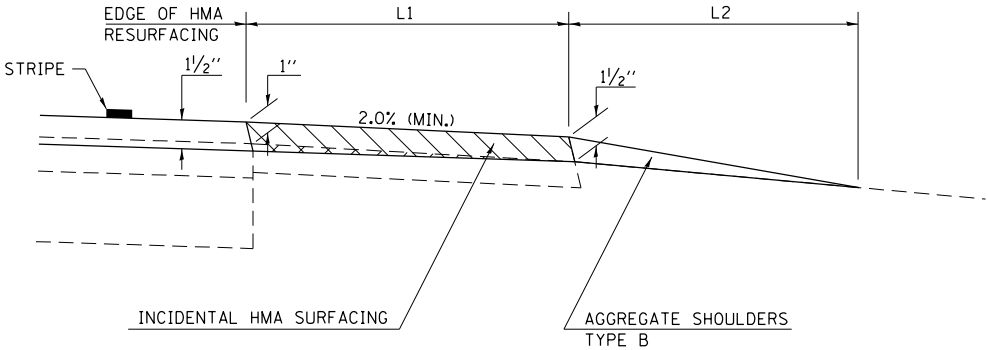
**NOTES**

THE HOT-MIX ASPHALT FOR ENTRANCES AND PUBLIC ROADS AND APPROACHES SHALL BE PAID FOR AS INCIDENTAL HOT-MIX ASPHALT SURFACING.

THE COST OF EXCAVATION IS INCLUDED IN THE PAY ITEM INCIDENTAL HOT-MIX ASPHALT SURFACING.

IF THERE IS NOT EXISTING HOT-MIX ASPHALT SHOULDER THEN THE ENTRANCE TAPER STARTS AT THE EDGE OF EXISTING PAVEMENT.

THE COST OF THE BITUMINOUS MATERIALS (PRIME COAT) FOR ENTRANCES AND PUBLIC ROAD APPROACHES SHALL BE INCLUDED IN THE PAY ITEM INCIDENTAL HOT-MIX ASPHALT SURFACING.



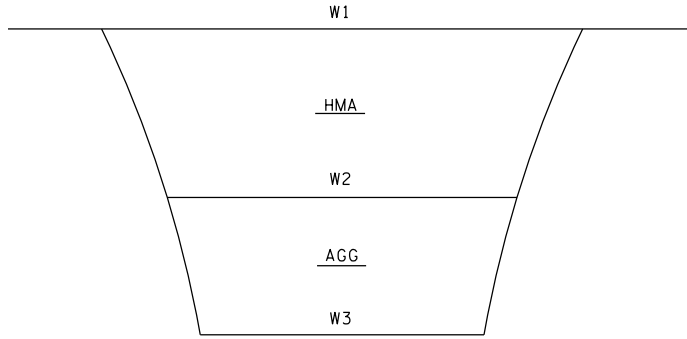
NOTES: THE INCIDENTAL BITUMINOUS SURFACING IS INTENDED TO RESURFACE THE EXISTING ENTRANCES IN THEIR ENTIRETY.

"X" = PROPOSED RESURFACING THICKNESS

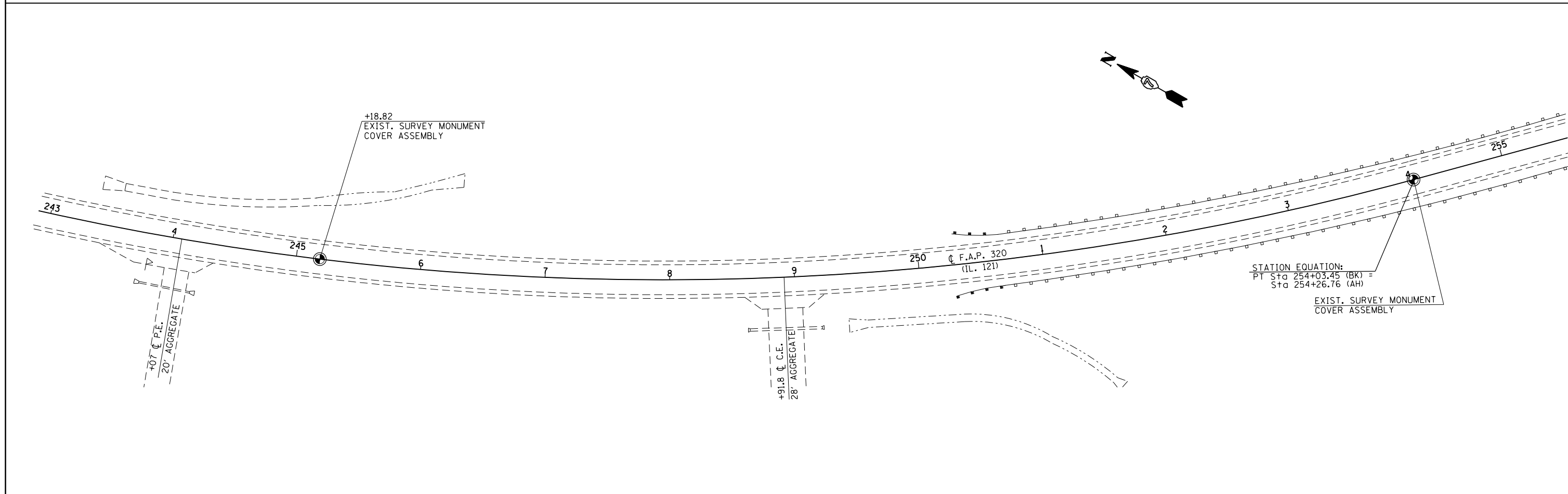
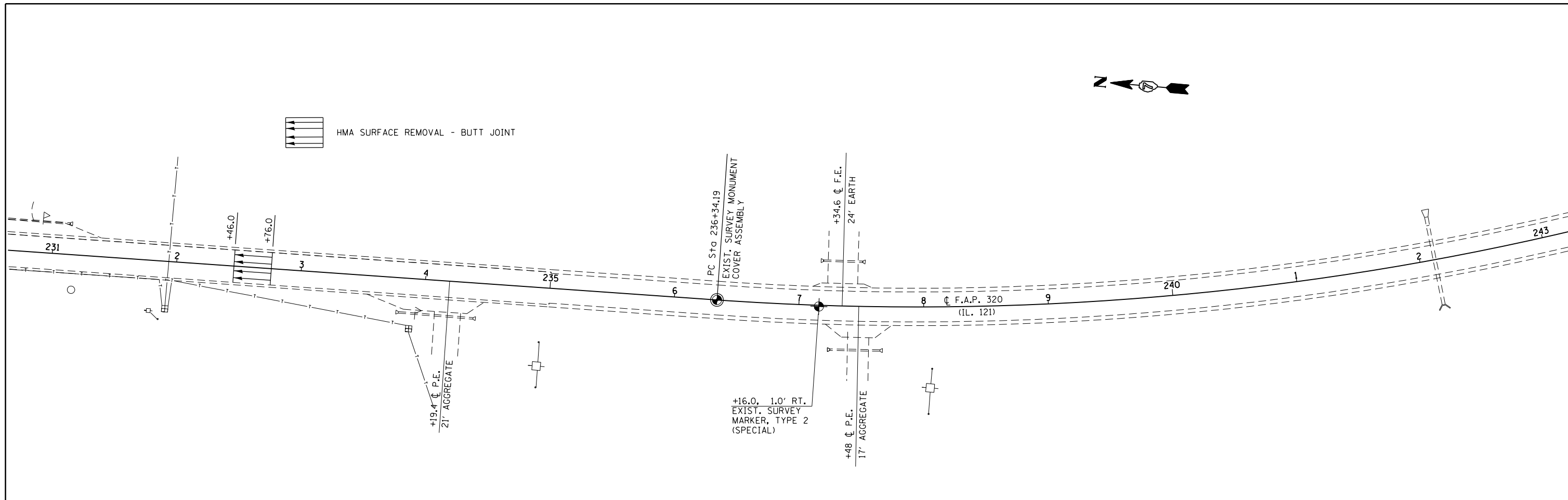
**ENTRANCE SCHEDULE**

SIDE	STATION	TYPE	W1	W2	W3	L1	L2	INCIDENTAL HOT-MIX ASPHALT SURFACING	AGGREGATE SURFACE COURSE, TYPE B
								FEET	FEET
RT	234+19.4	PE	60	28	20	6	4	2.5	1
LT	237+34.6	FE	55	33	20	4	6	1.6	2
RT	237+48	PE	40	28	20	4	6	1.3	1
RT	244+07	PE	77	33	28	6	4	3.1	1
RT	248+91.8	CE	54	47	40	6	4	2.8	2
LT	274+72	PRA	72	20	0	35	0	15.0	
RT	285+92	PE	55	24	0	10	0	3.7	
RT	286+10	MBT	46	46	46	6	4	2.6	2
LT	286+89	PRE	55	45	0	10	0	4.7	
<b>TOTALS</b>								<b>37</b>	<b>8</b>

NOTE: SEE DETAILS FOR W1, W2, W3, L1 AND L2 LOCATIONS







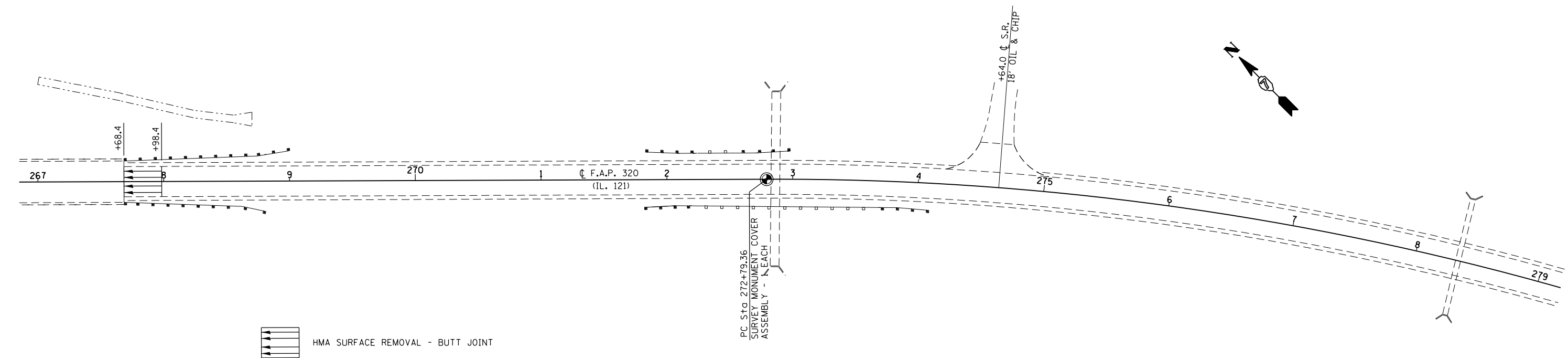
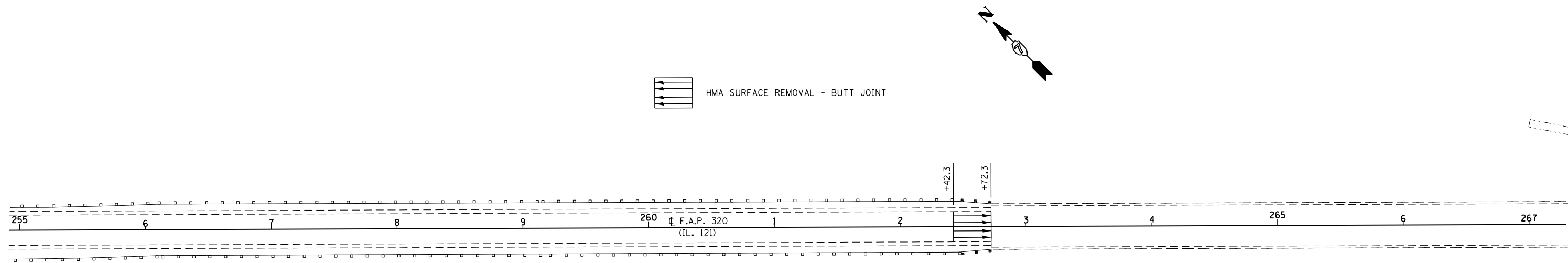
FILE NAME =	USER NAME = steffenmk	DESIGNED -	REVISED -
c:\pw\work\p\idot\steffenmk\d0384918\074670-sht-plan.dgn		DRAWN -	REVISED -
Default	PLOT SCALE = 80.0000' / in.	CHECKED -	REVISED -
	PLOT DATE = 4/1/2014	DATE -	REVISED -

**STATE OF ILLINOIS  
DEPARTMENT OF TRANSPORTATION**

**PLAN**

SCALE: 40      SHEET 1 OF 3 SHEETS      STA. 232+46 TO STA. 255+00

F.A.P. RTE.	SECTION	COUNTY	TOTAL SHEETS	SHEET NO.
320	D7 HMA RESURF 2015-4	MOULTRIE	17	9
CONTRACT NO. 74670			ILLINOIS FED. AID PROJECT	

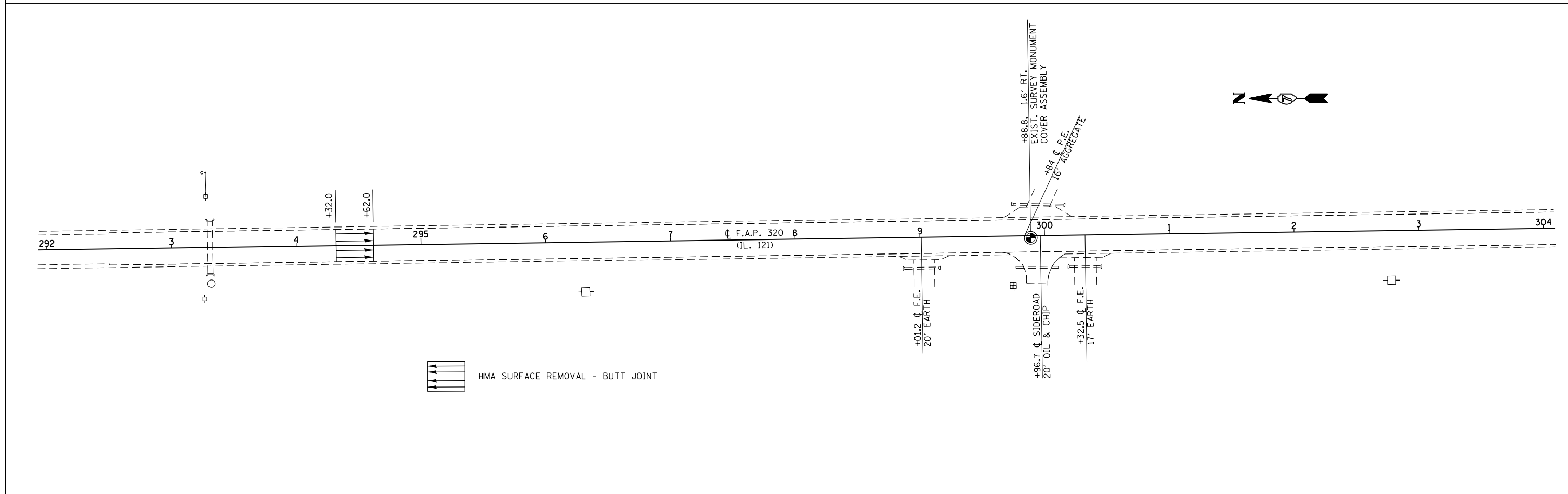
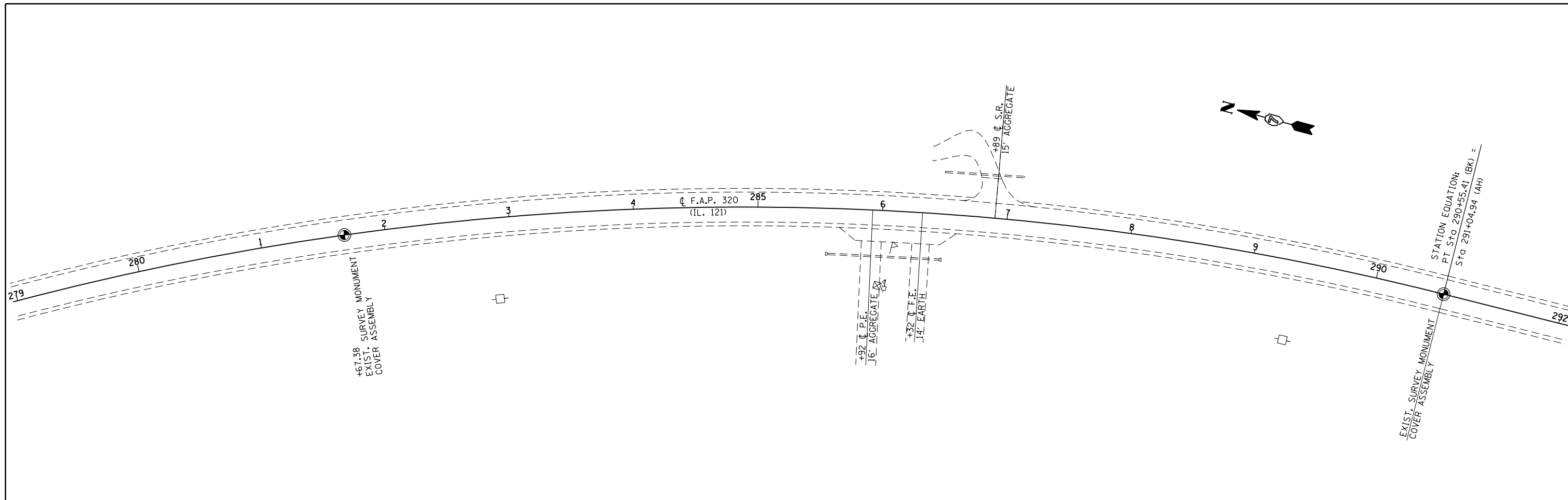


FILE NAME =	USER NAME = steffenmk	DESIGNED -	REVISED -
c:\pw\work\p\dot\steffenmk\d0384918\074670-sht-plan.dgn		DRAWN -	REVISED -
Default	PLOT SCALE = 80.0000' / in.	CHECKED -	REVISED -
	PLOT DATE = 4/1/2014	DATE -	REVISED -

**STATE OF ILLINOIS  
DEPARTMENT OF TRANSPORTATION**

<b>PLAN</b>			
SCALE: 40	SHEET 2	OF 3	SHEETS
STA. 255+00	TO STA. 279+00		

F.A.P. RTE.	SECTION	COUNTY	TOTAL SHEETS	SHEET NO.
320	D7 HMA RESURF 2015-4	MOULTRIE	17	10
CONTRACT NO. 74670			ILLINOIS FED. AID PROJECT	



FILE NAME =	USER NAME = steffenmk	DESIGNED -	REVISED -
c:\pw_work\p\dot\steffenmk\d0384918\074670-sht-plan.dgn		DRAWN -	REVISED -
Default	PLOT SCALE = 80.0000' / in.	CHECKED -	REVISED -
	PLOT DATE = 4/1/2014	DATE -	REVISED -

**STATE OF ILLINOIS  
DEPARTMENT OF TRANSPORTATION**

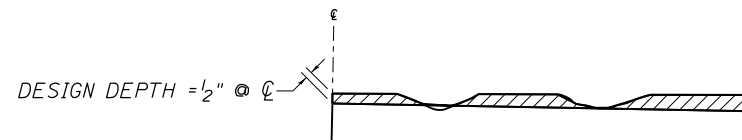
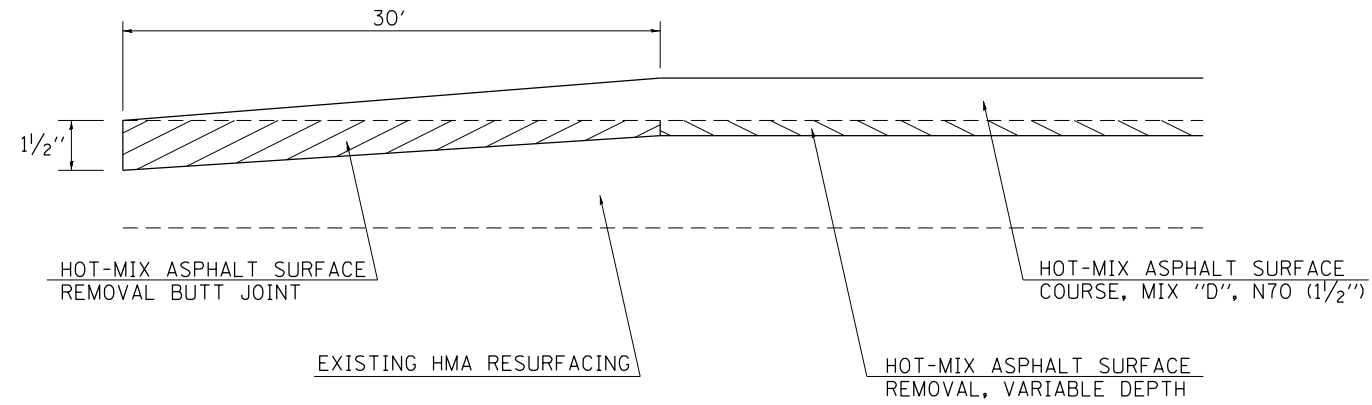
**PLAN**

SCALE: 40 SHEET 3 OF 3 SHEETS STA. 279+00 TO STA. 294+62

F.A.P. RTE.	SECTION	COUNTY	TOTAL SHEETS	SHEET NO.
320	D7 HMA RESURF 2015-4	MOULTRIE	17	11
ILLINOIS FED. AID PROJECT			CONTRACT NO. 74670	

**BUTT JOINT DETAIL**

STA. 232+46.00 TO STA. 232+76.00  
 STA. 262+42.30 TO STA. 262+72.30  
 STA. 267+68.40 TO STA. 267+98.40  
 STA. 294+32.00 TO STA. 294+62.00

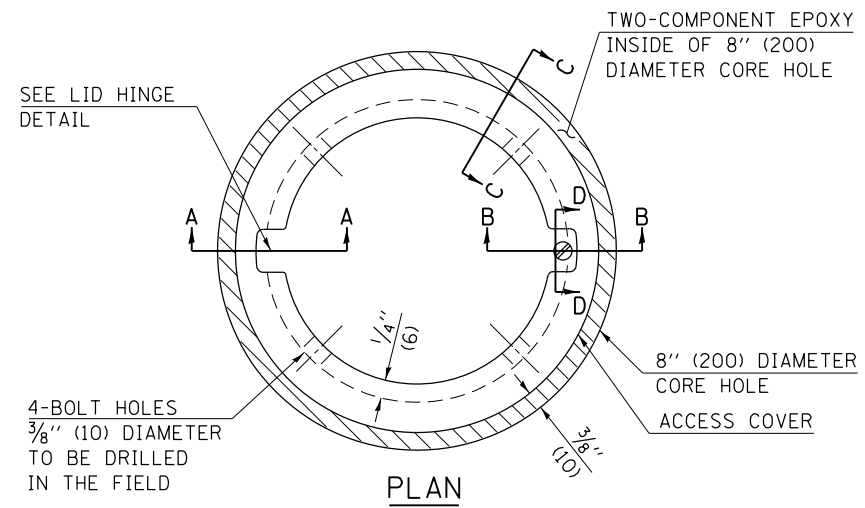


**NOTES:**



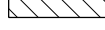
1. MILLING SHALL BE DONE TO ATTAIN A 3/16 "/FT. SLOPE IN CROWN SECTIONS
2. EXISTING S.E. AND S.E. TRANSITIONS SHALL BE MAINTAINED UNLESS OTHERWISE SHOWN ON THE PLANS.
3. MILLING TO THE BOTTOM OF WHEEL RUTS SHALL NOT BE NECESSARY UNLESS REQUIRED TO OBTAIN SLOPE OR THE DESIGN DEPTH AT CENTERLINE.
4. THE AVERAGE DEPTH OF MILLING IS ESTIMATED TO BE 1/2" BUT MAY VARY IN ISOLATED LOCATIONS.

**HOT-MIX ASPHALT SURFACE REMOVAL (VARIABLE DEPTH) DETAIL**

FILE NAME = c:\pwork\pwork\steffenmk\d0384918\074670-shd-details.dgn	USER NAME = steffenmk	DESIGNED -	REVISED -	<b>STATE OF ILLINOIS DEPARTMENT OF TRANSPORTATION</b>	<b>BUTT JOINT AND MILLING DETAILS</b>			F.A.P. RTE.	SECTION	COUNTY	TOTAL SHEETS	SHEET NO.
	PLOT SCALE = 100.0000' / in.	CHECKED -	REVISED -					320	D7 HMA RESURF 2015-4	MOULTRIE	17	12
Default	PLOT DATE = 4/1/2014	DATE -	REVISED -	SCALE: N/A SHEET 1 OF 1 SHEETS STA. TO STA.			ILLINOIS FED. AID PROJECT <b>CONTRACT NO. 74670</b>					



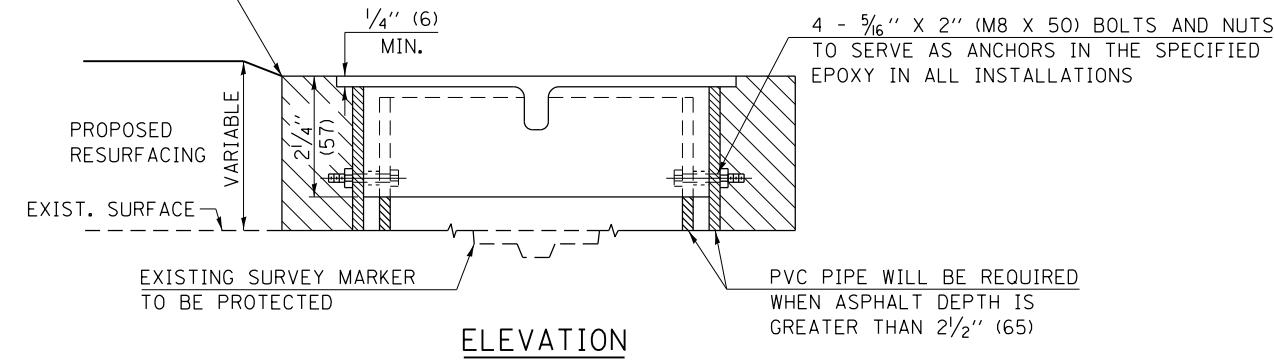
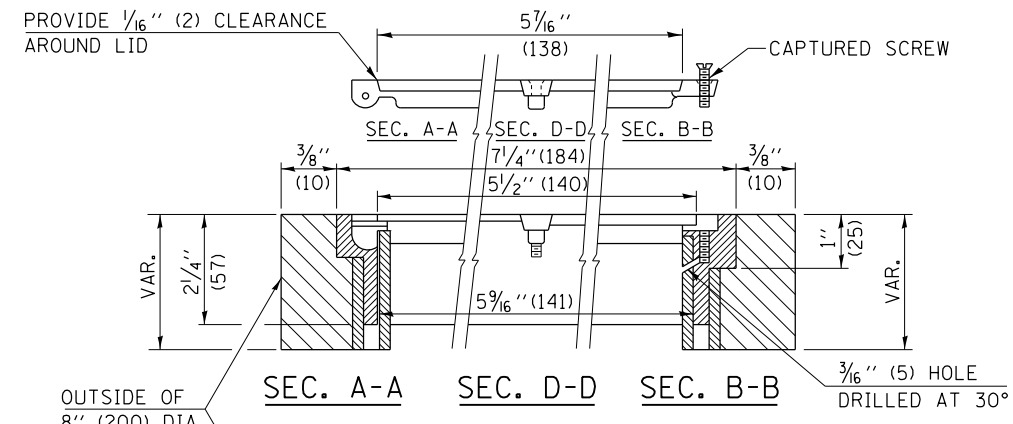
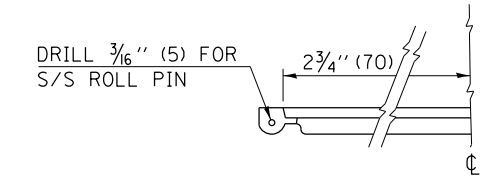
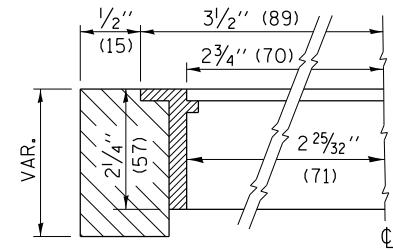
**LEGEND**

 - ALUMINUM CASTING  
 - 5" (125) OR 6" (150) P.V.C. PIPE  
 - TWO-COMPONENT EPOXY

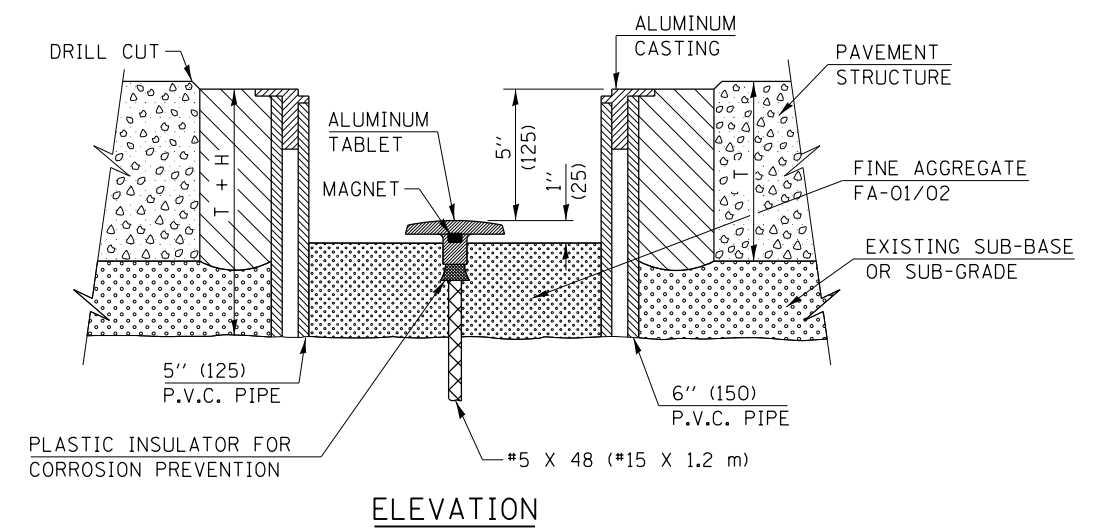
T = THICKNESS OF PAVEMENT STRUCTURE

H = THE THICKNESS OF THE SUB-BASE GRANULAR + 1" (25)

BILL OF MATERIAL	
ALUMINUM CASTING OF THE DIMENSIONS AND SPECIFICATIONS SHOWN OR OTHER SUBJECT TO ENGINEER'S APPROVAL OF SHOP DRAWINGS,	
4 EACH - $\frac{5}{16}$ " X 2" (M8 X 50) BOLTS WITH NUTS, EPOXY,	
5" OR 6" (125 mm OR 150 mm) DIAMETER P.V.C. PIPE, SCHEDULE 40 (WHEN REQUIRED).	



EXISTING SURVEY MARKER



PROPOSED SURVEY MARKER

NOT TO SCALE

Note: All dimensions are in INCHES (millimeters) unless otherwise shown.

DISTRICT 7 DETAIL NO. Z0070202

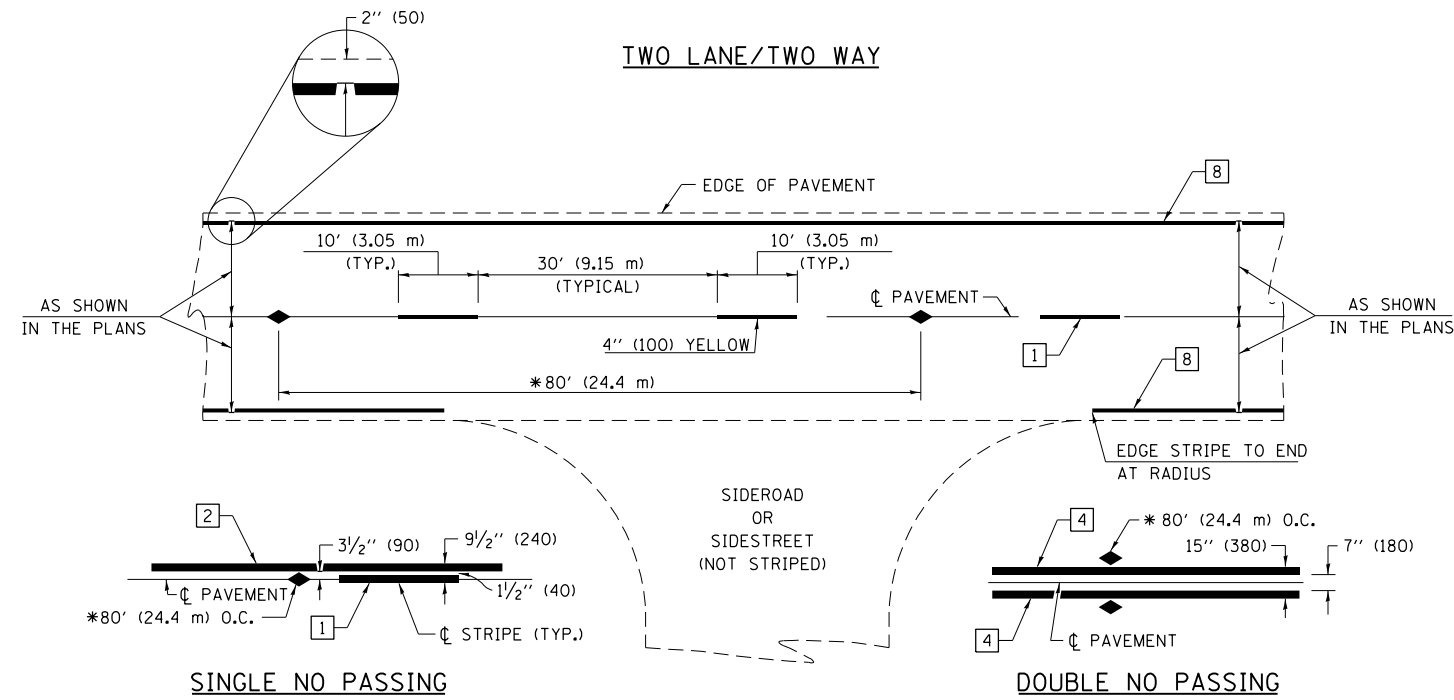
FILE NAME =	USER NAME = steffenmk	DESIGNED -	REVISED - MAD 6-11
ci:\pw\work\p\id\stef\mk\d0384918\074670-sh1-detail.dgn		DRAWN -	REVISED -
		CHECKED -	REVISED -
		DATE -	REVISED -

STATE OF ILLINOIS  
DEPARTMENT OF TRANSPORTATION

SURVEY MARKER VAULT

SCALE: N/A SHEET NO. 1 OF 1 SHEETS STA. TO STA.

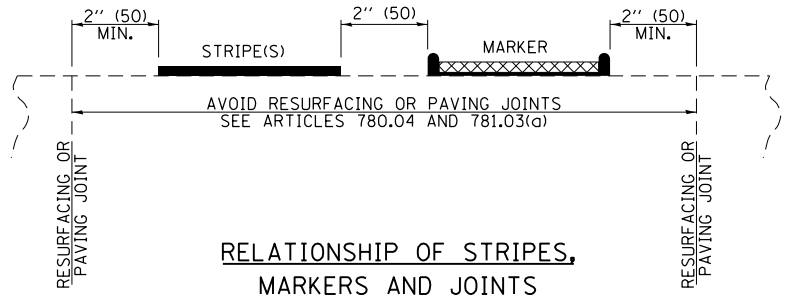
F.A.P. RTE.	SECTION	COUNTY	TOTAL SHEETS	SHEET NO.
320	D7 HMA RESURF 2015-4	MOULTRIE	17	13
CONTRACT NO. 74670				
FED. ROAD DIST. NO. ILLINOIS FED. AID PROJECT				



\* REDUCE TO 40' (12.2 m) O.C. ON CURVES WITH POSTED OR ADVISORY SPEEDS OF 45 mph (70 km/h) OR LESS.

**PAVEMENT MARKING LEGEND**

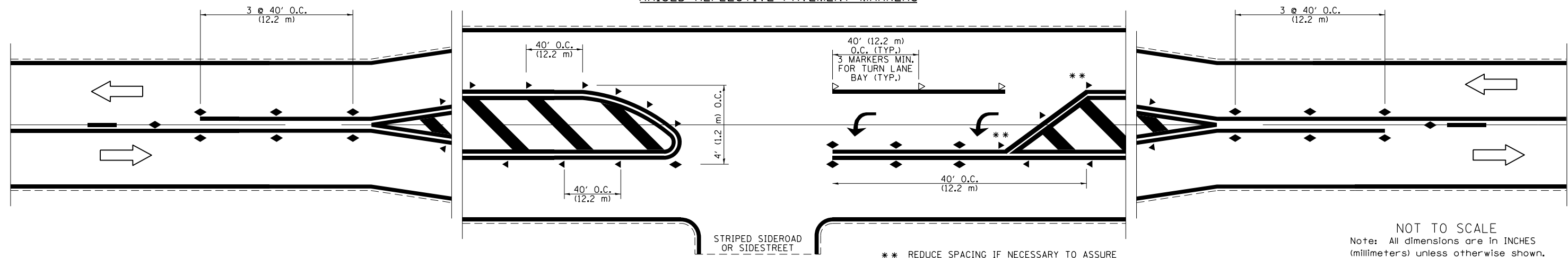
- 1 4" (100) SKIP-DASH (YELLOW)
- 2 4" (100) SOLID (YELLOW)
- 3 12" (300) DIAGONAL (YELLOW)
- 4 4" (100) DOUBLE YELLOW (NARROW)
- 5 12" (300) SOLID WHITE
- 6 RESERVED
- 7 6" (150) SKIP-DASH (WHITE)
- 8 4" (100) SOLID (WHITE)
- 9 12" (300) DIAGONAL (WHITE)
- 10 6" (150) SOLID (WHITE)
- 11 24" (600) STOP BAR (WHITE)
- 12 8" (200) SOLID (WHITE)
- 13 4" (100) PARKING WHITE



**TYPICAL PAVEMENT MARKERS LEGEND**

- ◆ TWO-WAY AMBER MARKER
- ▶ ONE-WAY AMBER MARKER
- ▷ ONE-WAY CRYSTAL MARKER

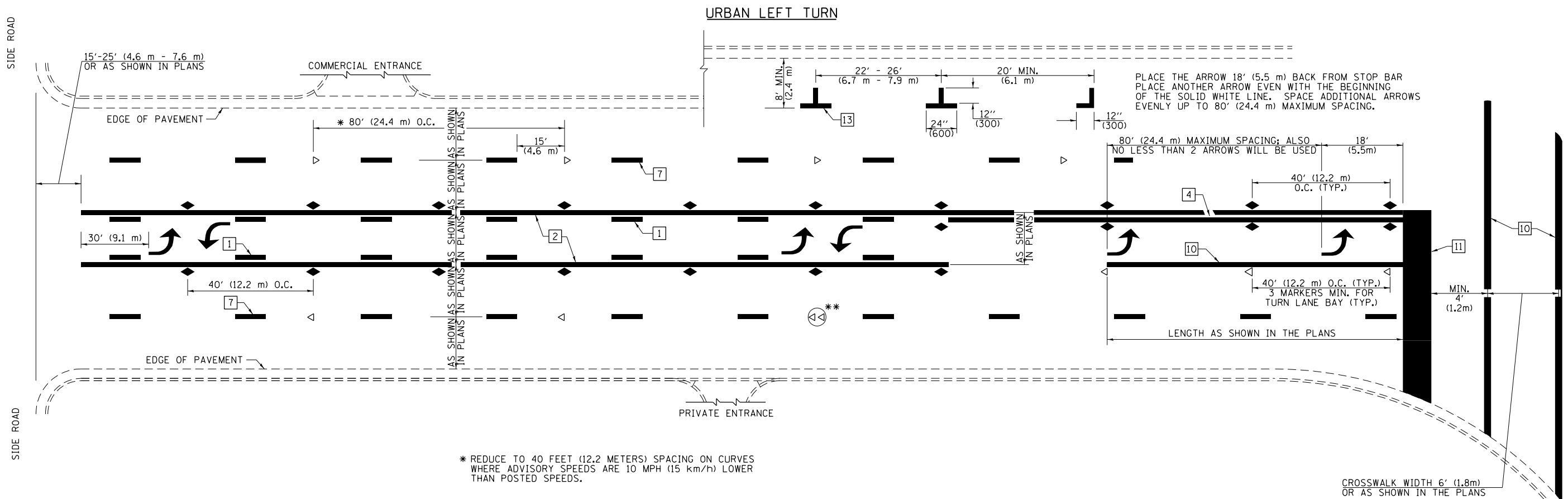
**RAISED REFLECTIVE PAVEMENT MARKERS**



\*\* REDUCE SPACING IF NECESSARY TO ASSURE MARKERS AT CORNER POINTS.

NOT TO SCALE  
Note: All dimensions are in INCHES (millimeters) unless otherwise shown.

FILE NAME =	USER NAME = steffenmk	DESIGNED -	REVISED -	<b>STATE OF ILLINOIS DEPARTMENT OF TRANSPORTATION</b>	<b>PAVEMENT MARKING AND RAISED REFLECTIVE PAVEMENT MARKERS (RURAL &amp; URBAN APPLICATIONS)</b>	F.A.P. RTE.	SECTION	COUNTY	TOTAL SHEETS	SHEET NO.	
ci:\pw\work\p\idot\stevfenmk\d0384918\074670-sh1-detail1.dgn	PLOT SCALE = 100.0000' / in.	DRAWN -	REVISED -			320	D7 HMA RESURF 2015-4	MOULTRIE	17	14	
	PLOT DATE = 4/1/2014	CHECKED -	REVISED -			CONTRACT NO. 74670					
		DATE -	REVISED -			ILLINOIS FED. AID PROJECT					



\* REDUCE TO 40 FEET (12.2 METERS) SPACING ON CURVES WHERE ADVISORY SPEEDS ARE 10 MPH (15 km/h) LOWER THAN POSTED SPEEDS.

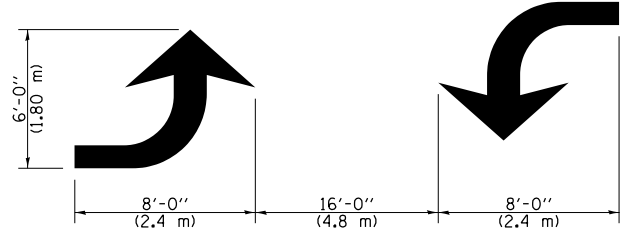
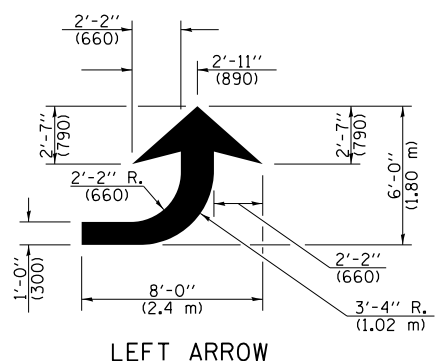
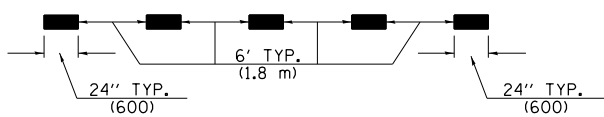
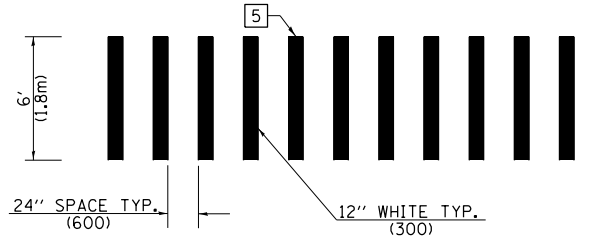
\*\* DOUBLE LANE LINE MARKERS SHALL BE SPECIFIED AND SPACED AS SHOWN IN HIGHWAY STANDARD 781001 FOR MULTI-LANE DIVIDED AND UNDIVIDED HIGHWAYS.

**PAVEMENT MARKING LEGEND**

- 1 4" (100) SKIP-DASH (YELLOW)
- 2 4" (100) SOLID (YELLOW)
- 3 12" (300) DIAGONAL (YELLOW)
- 4 4" (100) DOUBLE YELLOW (NARROW)
- 5 12" (300) SOLID WHITE
- 6 RESERVED
- 7 6" (150) SKIP-DASH (WHITE)
- 8 4" (100) SOLID (WHITE)
- 9 12" (300) DIAGONAL (WHITE)
- 10 6" (150) SOLID (WHITE)
- 11 24" (600) STOP BAR (WHITE)
- 12 8" (200) SOLID (WHITE)
- 13 4" (100) PARKING WHITE

**GENERAL NOTES**

1. TURN ARROW PAIRS SHALL BE PLACED AT 250' (75 m) INTERVALS AND SHALL BE EVENLY SPACED BETWEEN BOTH ENDS OF THE BIDIRECTIONAL LEFT TURN LANE. USE A MINIMUM OF TWO PAIRS PER BLOCK.
2. THE SOLID YELLOW PAVEMENT MARKINGS [2] SHOULD GENERALLY START OR END NEAR THE RADIUS POINT OF EACH STREET RETURN EXCEPT WHERE ONE OR BOTH ENDS WOULD INCLUDE STOP BARS.
3. THE SKIP-DASH PAVEMENT MARKINGS [1] OR [7] SHOULD BE CENTERED BETWEEN BOTH ENDS OF EACH CITY BLOCK AND SHALL BE PLACED SO THEY LINE UP ACROSS FROM EACH OTHER.
4. USE LARGE ARROW SIZE FOR BOTH RURAL AND URBAN LOCATIONS. (SEE LAST PAGE OF SECTION 780x FOR SYMBOLS TABLE)
5. LANE LINE EXTENSIONS SHALL BE THE SAME COLOR AND WIDTH AS THE LANE LINE BEING EXTENDED.

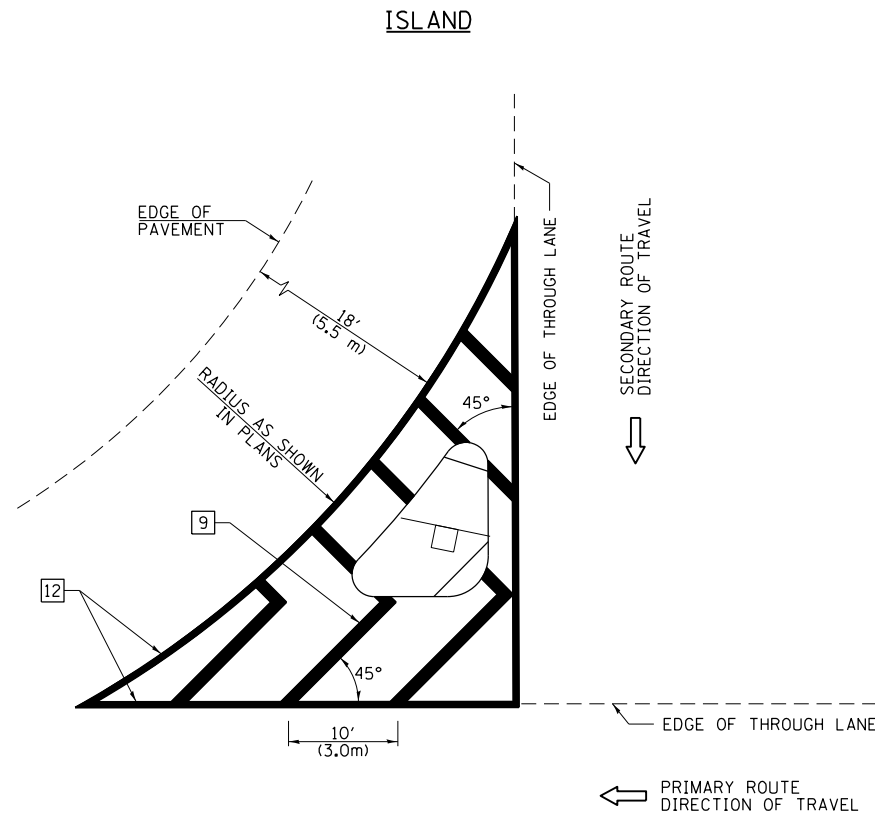


**TYPICAL DOUBLE TURN ARROWS (WHITE)**

**LEFT ARROW**  
REVERSE FOR RIGHT ARROW  
AREA = 15.6 SQ. FT. (1.47 m<sup>2</sup>)  
(WHITE)

NOT TO SCALE  
Note: All dimensions are in INCHES (millimeters) unless otherwise shown.

FILE NAME =	USER NAME = steffenmk	DESIGNED -	REVISED -	<b>STATE OF ILLINOIS DEPARTMENT OF TRANSPORTATION</b>	<b>PAVEMENT MARKING AND RAISED REFLECTIVE PAVEMENT MARKERS (RURAL &amp; URBAN APPLICATIONS)</b>	F.A.P. RTE.	SECTION	COUNTY	TOTAL SHEETS	SHEET NO.
ci:\pw\work\p\idot\steffenmk\d0384918\074670-sh1-detail.dgn		DRAWN -	REVISED -			320	D7 HMA RESURF 2015-4	MOULTRIE	17	15
PLOT SCALE = 100.0000' / in.		CHECKED -	REVISED -			CONTRACT NO. 74670				
PLOT DATE = 4/1/2014		DATE -	REVISED -			ILLINOIS FED. AID PROJECT				



**GENERAL NOTES**

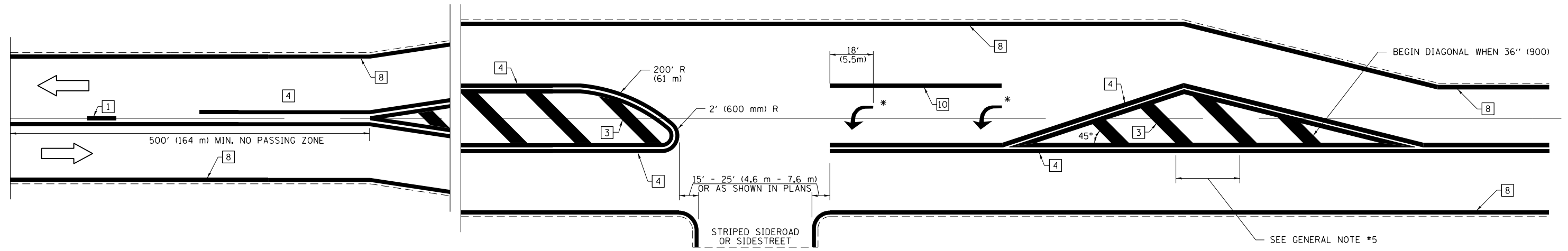
1. RAISED AND CORRUGATED MEDIANS SHALL BE OUTLINED WITH [2] IF PRESENT.
2. SOME OF THE INFORMATION INCLUDED WITH THIS DETAIL MAY NOT BE APPLICABLE TO THIS IMPROVEMENT.
3. PAVEMENT MARKINGS ARE TO BE EXTENDED THROUGH OMISSIONS WHEN APPLICABLE.
4. FINAL PAVEMENT MARKINGS SHALL BE IN PLACE PRIOR TO PLACING ANY RAISED REFLECTIVE PAVEMENT MARKERS.
5. THE FOLLOWING CRITERIA SHALL BE USED FOR SELECTING THE DIAGONAL PAVEMENT MARKING SPACING:

< 30 MPH (< 50 km/h)	15' (4.5 m)
30-45 MPH (50-75 km/h)	20' (6.0 m)
> 45 MPH (> 75 km/h)	30' (9.0 m)

**PAVEMENT MARKING LEGEND**

- [1] 4" (100) SKIP-DASH (YELLOW)
  - [2] 4" (100) SOLID (YELLOW)
  - [3] 12" (300) DIAGONAL (YELLOW)
  - [4] 4" (100) DOUBLE YELLOW (NARROW)
  - [5] 12" (300) SOLID WHITE
  - [6] RESERVED
  - [7] 6" (150) SKIP-DASH (WHITE)
  - [8] 4" (100) SOLID (WHITE)
  - [9] 12" (300) DIAGONAL (WHITE)
  - [10] 6" (150) SOLID (WHITE)
  - [11] 24" (600) STOP BAR (WHITE)
  - [12] 8" (200) SOLID (WHITE)
  - [13] 4" (100) PARKING WHITE
- 

**RURAL LEFT TURN STRIPING**



\* PLACE AN ARROW 18' (5.5 m) BACK FROM STOP BAR. PLACE ANOTHER ARROW EVEN WITH THE BEGINNING OF THE SOLID WHITE LINE. SPACE ADDITIONAL ARROWS EVENLY UP TO 80' (24.4 m) MAXIMUM SPACING. USE MINIMUM OF 2 ARROWS.

NOT TO SCALE  
 Note: All dimensions are in INCHES (millimeters) unless otherwise shown.

**DISTRICT 7 DETAIL NO. 7800001**

FILE NAME =	USER NAME = steffenmk	DESIGNED -	REVISED -
ci:\pw\work\p\idot\steffenmk\d0384918\074670-sh1-detail.dgn		DRAWN -	REVISED -
	PLOT SCALE = 100.0000' / 1in.	CHECKED -	REVISED -
	PLOT DATE = 4/1/2014	DATE -	REVISED -

**STATE OF ILLINOIS  
 DEPARTMENT OF TRANSPORTATION**

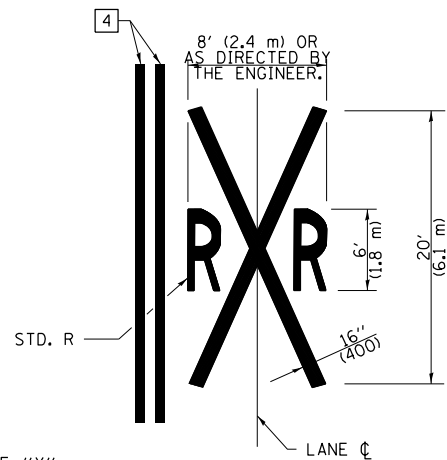
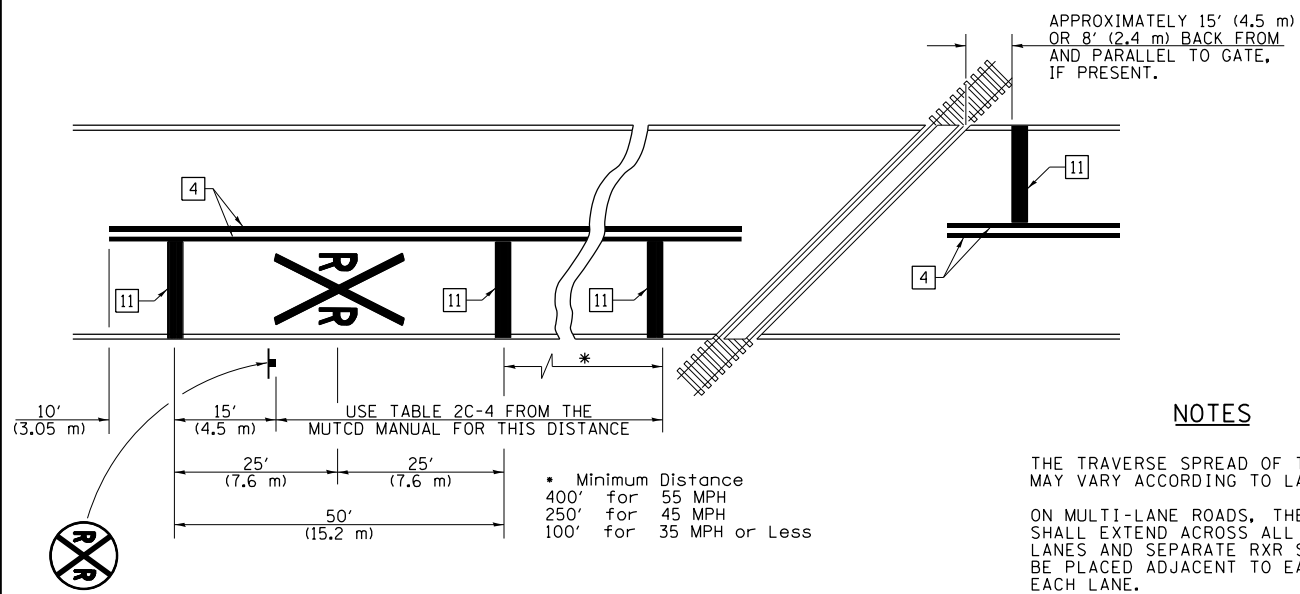
**PAVEMENT MARKING AND RAISED REFLECTIVE PAVEMENT MARKERS  
 (RURAL & URBAN APPLICATIONS)**

SCALE: SHEET NO. 3 OF 4 SHEETS STA. TO STA.

F.A.P. RTE.	SECTION	COUNTY	TOTAL SHEETS	SHEET NO.
320	D7 HMA RESURF 2015-4	MOULTRIE	17	16
CONTRACT NO. 74670				
ILLINOIS FED. AID PROJECT				



PAVEMENT MARKINGS AT RAILROAD-HIGHWAY GRADE CROSSING

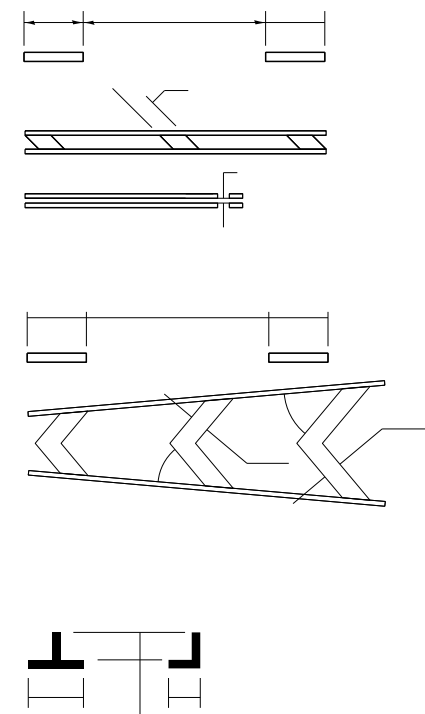


NOTES

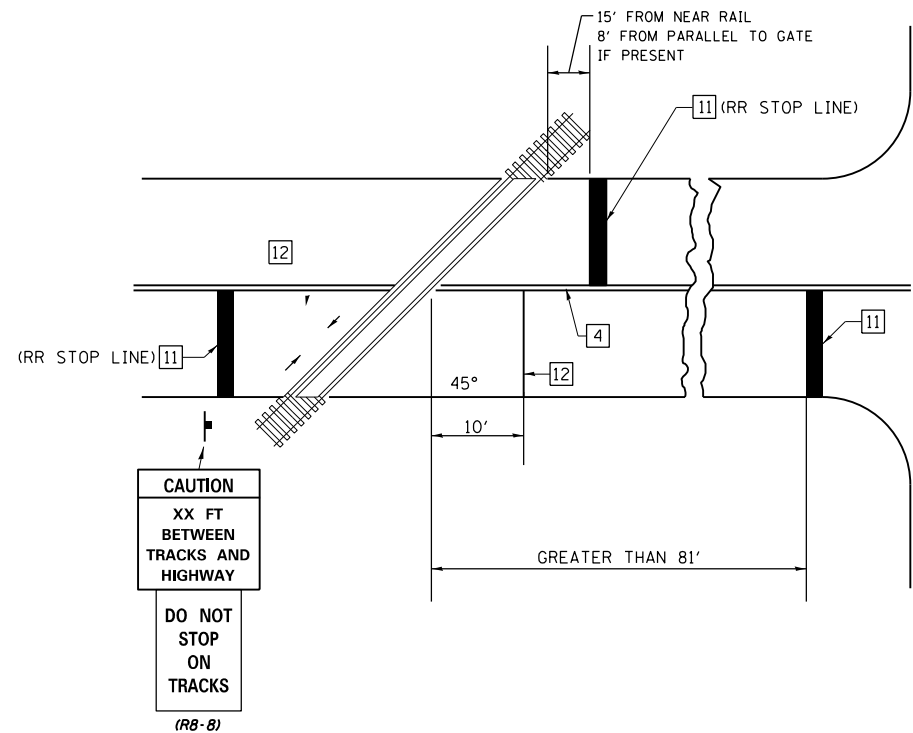
THE TRAVERSE SPREAD OF THE "X" MAY VARY ACCORDING TO LANE WIDTH.

ON MULTI-LANE ROADS, THE STOP LINES SHALL EXTEND ACROSS ALL APPROACH LANES AND SEPARATE RXR SYMBOLS SHALL BE PLACED ADJACENT TO EACH OTHER IN EACH LANE.

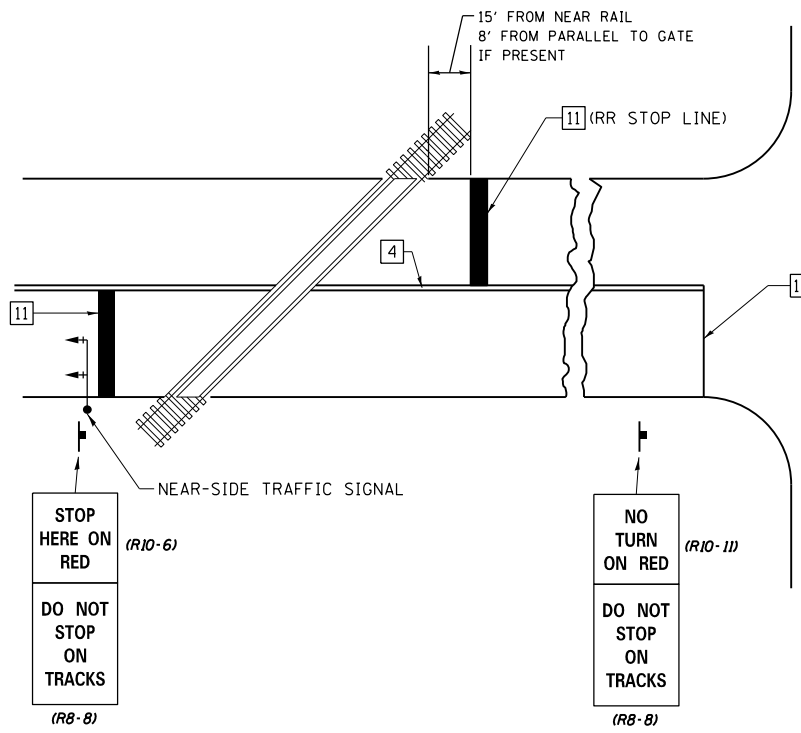
WHEN THE PAVEMENT MARKING SYMBOL IS USED, A PORTION OF THE SYMBOL SHOULD BE LOCATED DIRECTLY ADJACENT TO THE ADVANCE WARNING SIGN (W10-1) AS PLACED BY TABLE II-1, CONDITION B OF THE MUTCD.



RAILROAD CROSSING WITH INTERCONNECT ONLY



RAILROAD CROSSING WITH INTERCONNECT AND PRE-SIGNALS



GENERAL NOTES

SUPPLEMENTAL PAVEMENT MARKING TREATMENT FOR RAILROAD-HIGHWAY GRADE CROSSING

NOT TO SCALE  
Note: All dimensions are in INCHES (millimeters) unless otherwise shown.

FILE NAME =	USER NAME = steffenmk	DESIGNED -	REVISED -
ci:\pw\work\p\idot\steffenmk\d0384918\074670-sh1-detail.s.dgn		DRAWN -	REVISED -
	PLOT SCALE = 100.0000' / 1in.	CHECKED -	REVISED -
	PLOT DATE = 4/1/2014	DATE -	REVISED -

STATE OF ILLINOIS  
DEPARTMENT OF TRANSPORTATION

PAVEMENT MARKING AND RAISED REFLECTIVE PAVEMENT MARKERS  
(RURAL & URBAN APPLICATIONS)

SCALE: SHEET NO. 4 OF 4 SHEETS STA. TO STA.

DISTRICT 7 DETAIL NO. 7800001				
F.A.P. RTE.	SECTION	COUNTY	TOTAL SHEETS	SHEET NO.
320	D7 HMA RESURF 2015-4	MOULTRIE	17	17
CONTRACT NO. 74670				
ILLINOIS FED. AID PROJECT				