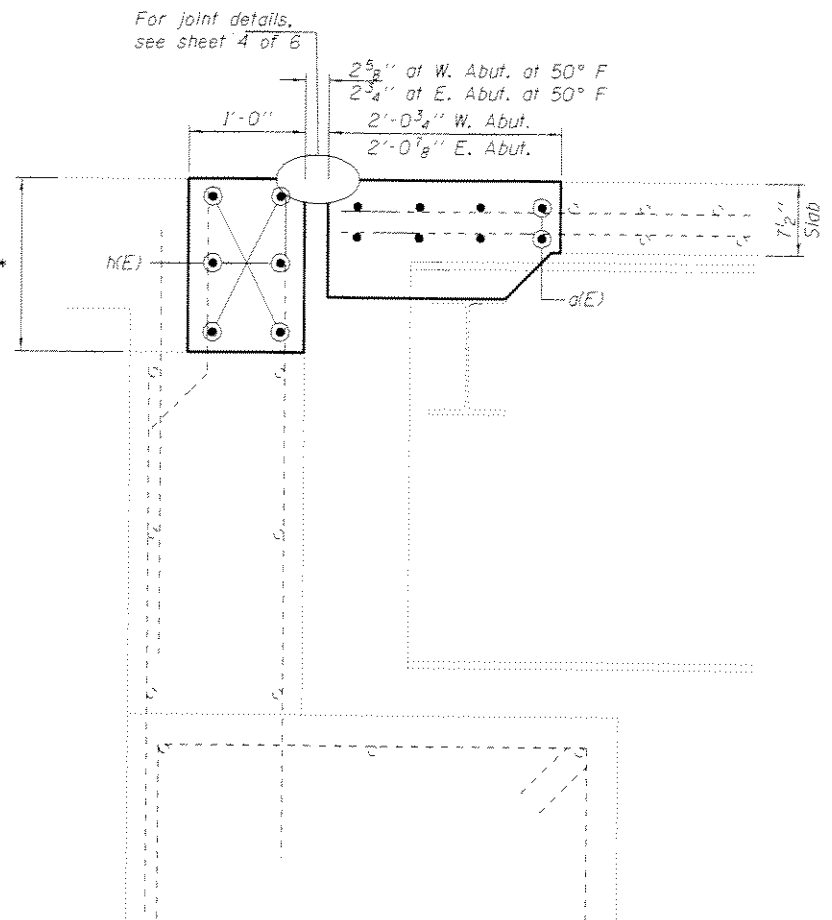


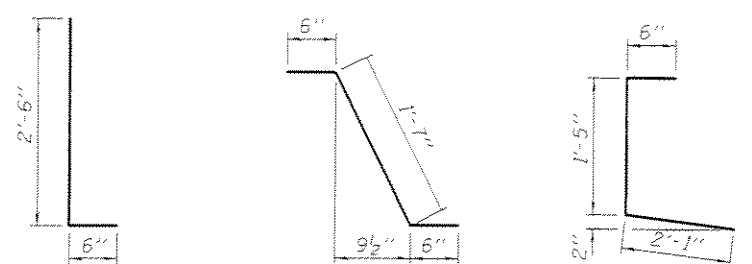
SECTION A-A
(Near \odot Roadway)
(Dimensions are at RT L's to end of deck)



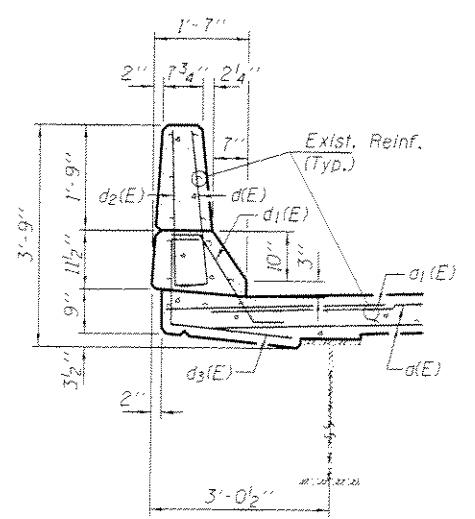
SECTION B-B
(Near \odot Roadway)
(Dimensions are at RT L's to end of deck)

* Varies from 1'-4" to 2'-5 5/8" at W. Abut.
Varies from 1'-4" to 2'-4 1/2" at E. Abut.

Note:
Hatched areas indicate removal.



BARS $d(E)$ & $d_2(E)$ BAR $d_1(E)$ BAR $d_3(E)$



TYPICAL PARAPET SECTION

BILL OF MATERIAL

Bar	No.	Size	Length	Shape
$d(E)$	32	#5	26'-9"	—
$a_1(E)$	16	#6	4'-0"	—
$d_1(E)$	20	#5	3'-0"	L
$d_2(E)$	21	#5	2'-7"	L
$d_3(E)$	20	#4	3'-0"	L
$d_3(E)$	21	#4	4'-0"	L
$h(E)$	24	#6	27'-10"	—
Concrete Removal			Cu. Yd.	17.3
Concrete Superstructure			Cu. Yd.	17.5
Reinforcement Bars, Epoxy Coated			Lbs.	2210

PRE-FINAL

DATE: 9/30/2013

DESIGNED <i>DAB</i>	EXAMINED <i>Timothy A. Anichini</i>	DATE SEPTEMBER 30, 2013
CHECKED <i>SMR</i>	PASSED <i>ACTING ENGINEER OF STRUCTURAL SERVICES</i>	REVISED
DRAWN <i>dalvo</i>	PASSED <i>ACTING ENGINEER OF BRIDGES AND STRUCTURES</i>	REVISED
CHECKED <i>DAB SMR</i>		

**STATE OF ILLINOIS
DEPARTMENT OF TRANSPORTATION**

**REPAIR DETAILS
SN 061-0082**

F.A.P. RTE. 327	SECTION	COUNTY MARION	TOTAL SHEETS	SHEET NO.
CONTRACT NO.				

SHEET NO. 3 OF 6 SHEETS

ILLINOIS FED. AID PROJECT