

UPSTREAM END GRADING PLAN

Grading to be adjusted to fit site conditions. Slopes shall be 1:2 min.

GENERAL NOTES

Reinforcement bars shall conform to the requirements of ASTM A 706 Grade 60.

Box Culvert End Sections shall be constructed according to the requirements of Section 540 of the Standard Specifications except as modified herein. End sections will be paid for at the contract unit price per each for Box Culvert End Sections.

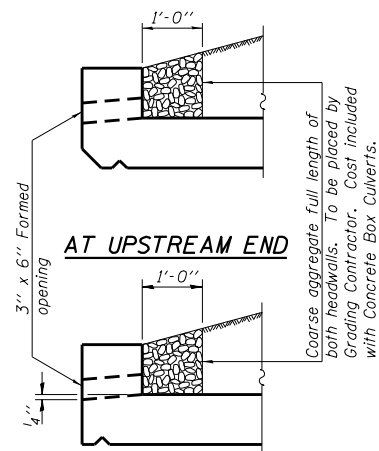
The Contractor may furnish the end section as a single precast concrete piece or construct the end section in the field using cast-in-place (CIP) construction.

Shop drawings that detail slab thickness and reinforcement layout for the Box Culvert End Sections shall be provided to the Engineer for review and approval. Reinforcement bars not detailed herein shall be detailed with a clear distance at the end of the reinforcement not less than 1/2" nor more than 2". For the precast option, it shall be the Contractor's responsibility for determining a method of handling and a construction procedure and shall be included on the shop drawings.

The Contractor shall determine and detail in the shop drawings any necessary strengthening or stiffening provisions necessary to handle the precast segment. Any required modifications shall be at no extra charge.

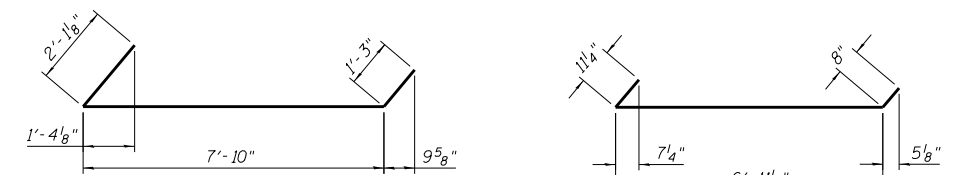
Reinforcement bars designated (E) shall be epoxy coated.

Bonded construction joints shall be prepared accordingly to Article 503.09 of the Standard Specifications.



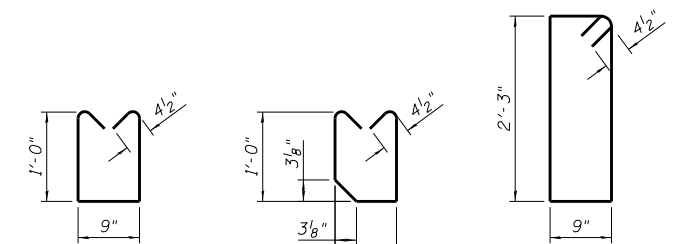
AT DOWNSTREAM END

DRAIN DETAIL



BAR h

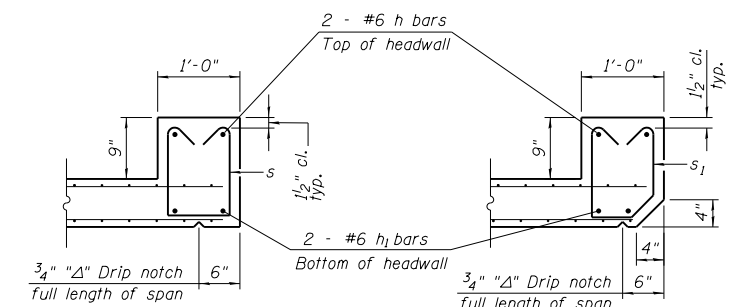
BAR h1



BAR s

BAR s1

BAR s2



SECTION B-B

(At downstream end)

SECTION B-B

(At upstream end)

BILL OF MATERIAL

For Information Only
(Downstream End)

Bar	No.	Size	Length	Shape
h	2	#6	11'-2"	U
h1	2	#6	8'-7"	U
h2	6	#5	8'-0"	—
s	7	#4	3'-6"	U
			Class SI Concrete	Cu. Yd. 6.2
			Reinforcement Bars	Pound 130
			Welded Wire Fabric	Sq. Ft. 390

BILL OF MATERIAL

For Information Only
(Upstream End)

Bar	No.	Size	Length	Shape
h	4	#6	11'-2"	U
h1	4	#6	8'-7"	U
h2	6	#5	8'-0"	—
s1	7	#4	3'-4"	U
			Class SI Concrete	Cu. Yd. 8.8
			Reinforcement Bars	Pound 130
			Welded Wire Fabric	Sq. Ft. 490

STATE OF ILLINOIS
DEPARTMENT OF TRANSPORTATION

BOX CULVERT END SECTION DETAILS
STA. 734 + 80.00 CULVERT REPLACEMENT - S.N. 060-2490

F.A.P. RTE.	SECTION	COUNTY	TOTAL SHEETS	SHEET NO.
785	(133,134,135)RS-4	MADISON	28	24
CONTRACT NO. 76C58				

SHEET NO. 4 OF 8 SHEETS

ILLINOIS FED. AID PROJECT

X:\CH\1\2011\11064-17\CAD\Plans\060-2490_Culvert.dgn



USER NAME =	DESIGNED -	REVISED -
PLOT SCALE =	CHECKED -	REVISED -
PLOT DATE =	DRAWN -	REVISED -
	CHECKED -	REVISED -