

STATE OF ILLINOIS  
DEPARTMENT OF TRANSPORTATION

DIVISION OF HIGHWAYS

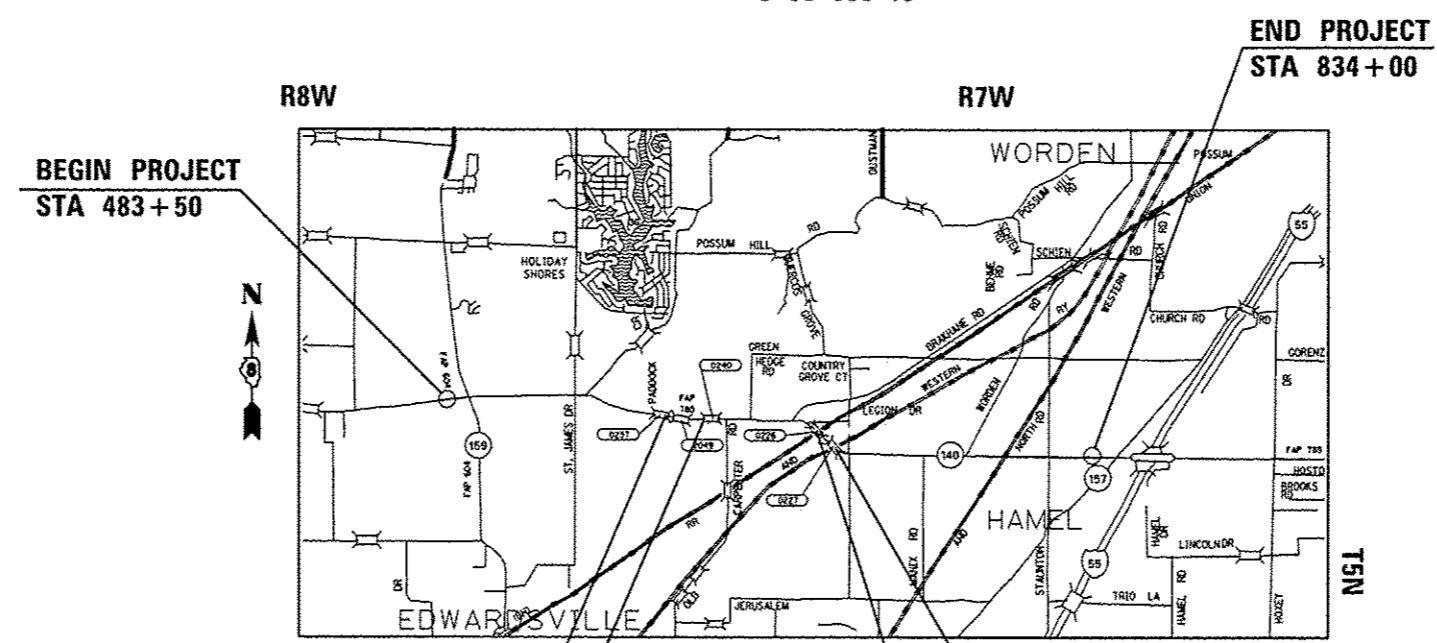
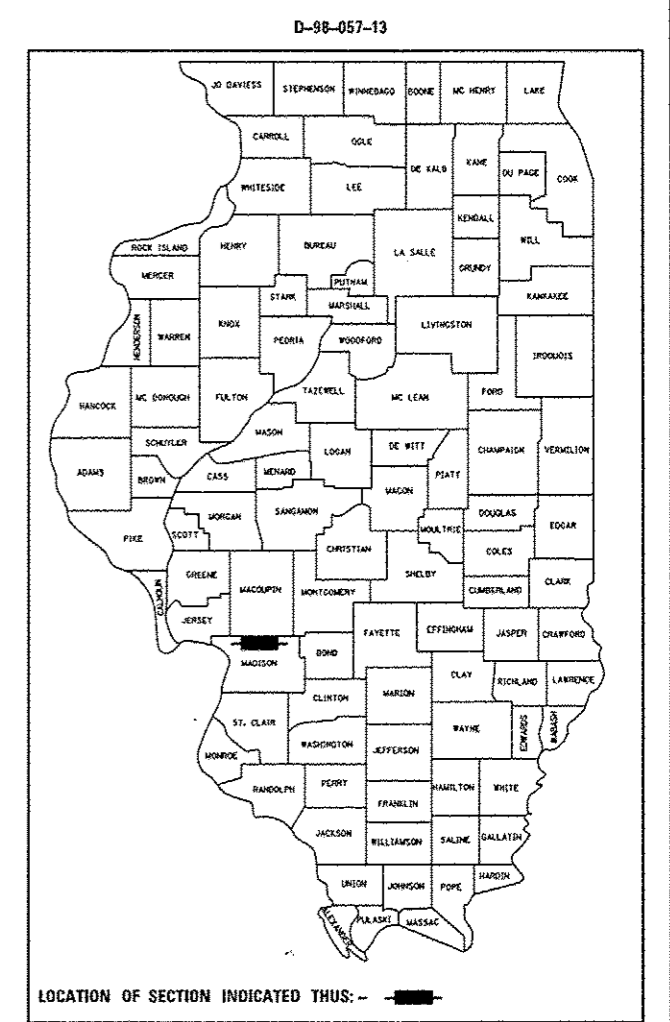
**PROPOSED  
HIGHWAY PLANS**

FAP ROUTE 785 (IL 140)  
SECTION (133,134,135)RS-4  
PROJECT ACF - 0785 (034)  
RESURFACING IL 140 FROM IL 159 TO HAMEL  
MADISON COUNTY

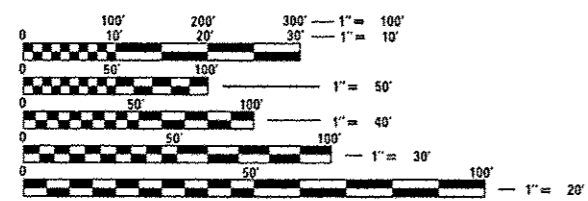
C-98-058-13

F.A.P. RTE.	SECTION	COUNTY	TOTAL SHEETS	SHEET NO.
785	(133,134,135)RS-4	MADISON	28	1
		ILLINOIS	CONTRACT NO. 76G58	

FOR INDEX OF SHEETS, SEE SHEET NO. 2



ADT  
2013 ADT = 8050 (ACTUAL)  
2014 ADT = 8100 (ESTIMATED)  
SU = 3.4%  
MU = 4.6%



FULL SIZE PLANS HAVE BEEN PREPARED USING STANDARD ENGINEERING SCALES. REDUCED SIZED PLANS WILL NOT CONFORM TO STANDARD SCALES. IN MAKING MEASUREMENTS ON REDUCED PLANS, THE ABOVE SCALES MAY BE USED.

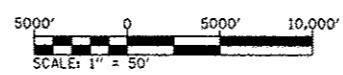
J.U.L.I.E.  
JOINT UTILITY LOCATION INFORMATION FOR EXCAVATION  
1-800-892-0123  
OR 811

PROJECT ENGINEER - TIM PADGETT (618)346-3325  
PROJECT MANAGER - LIZ BURNSIDE (618)346-3196

CONTRACT NO. 76G58

BRIDGE OMISSION:  
STA 599+76 TO STA 600+95  
BRIDGE OMISSION:  
STA 622+65 TO STA 626+55  
BRIDGE OMISSION:  
STA 696+58 TO STA 697+32  
BRIDGE OMISSION:  
STA 686+11 TO STA 686+69

BEGINNING LONG/LAT = 38° 53' 51.03" N, 89° 58' 12.27" W  
ENDING LONG/LAT = 38° 53' 20.60" N, 89° 51' 01.41" W



GROSS LENGTH = 34,409 FT. = 6.52 MILE  
NET LENGTH = 35,050 FT. = 6.64 MILE

STATE OF ILLINOIS  
DEPARTMENT OF TRANSPORTATION  
DIVISION OF HIGHWAYS  
SUBMITTED 3/20/14  
Alfred J. Giam  
DEPUTY DIRECTOR OF HIGHWAYS, REGION 5 ENGINEER  
May 9 2014  
John D. Baronzelli, PE  
ENGINEER OF DESIGN AND ENVIRONMENT  
May 9 2014  
Omur Osman, PE  
DIRECTOR OF HIGHWAYS/CHIEF ENGINEER

**PRINTED BY THE AUTHORITY  
OF THE STATE OF ILLINOIS**